

41M NEDSHIP — NEDSHIP



Builder: [Nedship](#)

LOA: 134' 7" (41.00m)

Year Built: 2015

Model: Mega Yacht

Price: **PRICE ON APPLICATION**

Location: Turkey

Our experienced yacht broker, Andrey Shestakov, will help you choose and buy a yacht that best suits your needs **41M NEDSHIP — Nedship** from our catalogue. Presently, at Shestakov Yacht Sales Inc., we have a wide variety of yachts available on our sale's list. We also work in close contact with all the big yacht manufacturers from all over the world.

If you would like to buy a yacht **41M NEDSHIP — Nedship** or would like help answering any questions concerning purchasing, selling or chartering a yacht, please call **+1(954)274-4435**

TABLE OF CONTENTS

TABLE OF CONTENTS	2
SPECIFICATIONS	3
Overview	3
Basic Information	6
Dimensions	7
Accommodations	7
Hull and Deck Information	7
Engine Information	7
PHOTOS	8
CONTACTS	13
Contact details	13
Telephones	13
Office hours	13
Address	13

SPECIFICATIONS

Overview

Unique opportunity, cancelled order now available at a huge saving and delivery time of 14 months.

This Nedship is #3 in the series and represents huge interior volume for her length yet retains a very sleek profile. Interior can still be chosen and you can work with our interior architect to fashion your own dream yacht.

Nedship build a very high quality yacht and all machinery and equipment is premium quality (MTU engines etc)

Large master suite on deck and four further large guest cabins below for up to 10/12 guests. 8 crew with four crew cabins.

This is a "four" deck yacht so you have expansive outdoor living areas and voluminous interior entertaining areas.

A rare opportunity to purchase at well below retail price. Hull is E glass and carbon for exceptional rigidity and strength.

Call now for full details and specifications, serious parties only please.

CONSTRUCTION

- SUPER STRUCTURE: Handlaid epoxy resin / E-glass/Carbon
- HULL: Handlaid epoxy resin /E-glass/Carbon
- DECK: Handlaid Burmese Teak

GENERAL

- BUILDER: TSMM / NED SHIP GROUP
- CLASSIFICATION: RINA Charter Class – MCA compliant
- YEAR: 2015
- LOA: 41 m (134'5ft)
- DISPLACEMENT – Light: 145 t
- DISPLACEMENT – Heavy: 185 t
- TONNAGE: 360 GRT

SPEED & CONSUMPTION

- CRUISE SPEED: 17 knots
- MAXIMUM SPEED: 21 knots
- RANGE: 1300 Nm @ 15 Knots

TANK CAPACITY

- FUEL: 33,000 Ltrs
- FRESH WATER: 6,000 Ltrs
- BLACK: 5,800 Ltrs
- LUBE OIL: 400 Ltrs

MAIN ENGINES

- ENGINES: 2 x MTU 2600 HP
- ENGINE MODEL: MTU 16V 2000 M94 CR

ACCOMMODATIONS

- A new four-deck layout
- The NEDSHIP 41M fly offers on four-decks with an additional intermediate wheelhouse deck four major outdoor areas on fly, main, upper and forward deck.
- The fly deck opens a great and private area for undisturbed sun bathing and relaxing time
- The upper deck comprises a sky lounge that opens up to the upper sun deck, creating one large open lounge area.
- The intermediate wheelhouse deck accommodates the wheelhouse and the captain's cabin as well as the Portuguese bridges with their wing control stations.
- The main deck offers a spacious and functional social area with a sunbed on the aft part of the cockpit adjacent to the dining table. The light salon with two lounge sections, including a bar and office, displays many fresh ideas such as a skylight and full height side openings to give it the optimal alfresco feeling. A well appointed galley with dumb waiter and cold room stores is adjacent to the salon and the staircase for optimal access to all dining areas on the yacht. The large full beam master stateroom forward is well lit and equipped with large cabinets and dressing rooms and the large bathroom feels very light and open with ample natural light from the large side window.
- The guest area on the lower deck consists of two spacious double cabins and two twin cabins with single and double beds plus a small pantry for guests. The crew quarters are all forward and the engine room and control facilities is all aft next to the tender garage and laundry.
- Indoor lobbies and staircases and outdoor stairways on each deck connect all levels and areas of the yacht. The yacht's layout provides separate staircases and passageways for crew and guests alike to guarantee greatest privacy.

GALLEY & LAUNDRY EQUIPMENT

- Miele Dishwasher
- Miele Oven

- Miele Washing Machine
- Miele Microwave
- Miele Dryer
- Miele Hob
- Galley Extractor custom
- 2 x Miele Fridge+custom coldroom
- Miele Ice Maker
- 2 x Miele Freezer

COMMUNICATIONS, NAVIGATION & ENTERTAINMENT EQUIPMENT

Communications Equipment:

- GMDSS Fleet 77 Satellite telephone
- Fleet Broadband
- GMDSS EPIRB
- Sailor GMDSS SSB
- Mcmurdo GMDSS VHF portable
- Sailor VHF GMDSS DSC
- Sailor SAT C (GMDSS)
- SATCOM
- Seatel Coastal tv
- Telephone PABX Panasonic
- GSM phone voice and fax

Navigation Equipment:

- 2 x Simrad Roberts Radar
- Saab GPS / H550 sensor
- JRC Depth sounder
- Plotter - Mega Guard with Transas
- JRC Wind transducer
- Alpatrone Gyro compass
- JRC Speed Log
- NAVTEX JRC
- Raytheon Autopilot
- AIS Saab r4
- Simrad Roberts Rudder indicator
- Mag and Plath compass Cassens

Centralized Entertainment Equipment:

- 1 x high level System by Videoworks, Italy

Salon:

- 52" Samsung LCD fore
- 3 x DVD player
- 46" NAD LCD aft
- WiFi access point
- 55" Samsung
- WiFi Access point
- 1 x DVD player

Master Cabin/Office:

- 55" Samsung LCD
- WiFi access point
- 24" Samsung LCD
- 2 x DVD player

Guest Cabins:

- 32" Samsung LCD forward cabins
- DVD player
- 32" Samsung LCD aft cabins

Aft Deck:

- 46" NAD LCD

Crew:

- 24" Samsung LCD captains cabin
- WiFi access point
- 24" Samsung LCD engineers cabin
- 32" Samsung LCD crew mess

DISCLAIMER

The Company offers the details of this vessel in good faith but cannot guarantee or warrant the accuracy of this information nor warrant the condition of the vessel. A buyer should instruct his agents, or his surveyors, to investigate such details as the buyer desires validated. This vessel is offered subject to prior sale, price change, or withdrawal without notice.

Basic Information

Category: Mega Yacht

Model Year: 2015

Year Built: 2015

Country: Turkey

Dimensions

LOA: 134' 7" (41.00m)

Accommodations

Total Cabins: 9

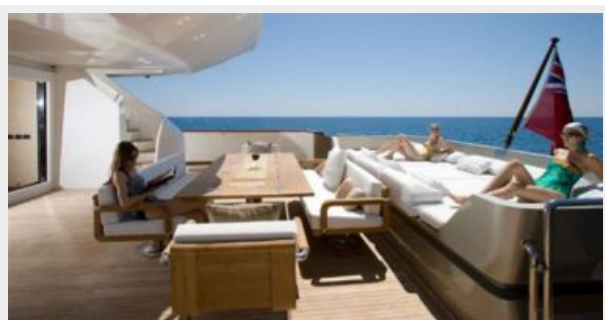
Hull and Deck Information

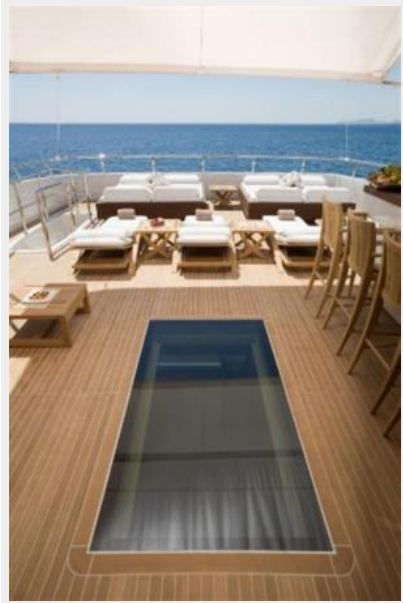
Hull Material: Epoxy Composite

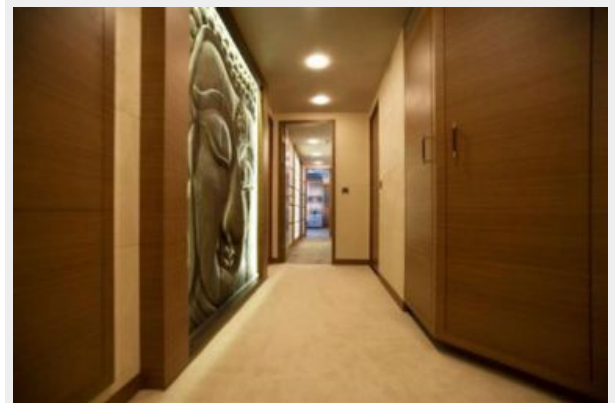
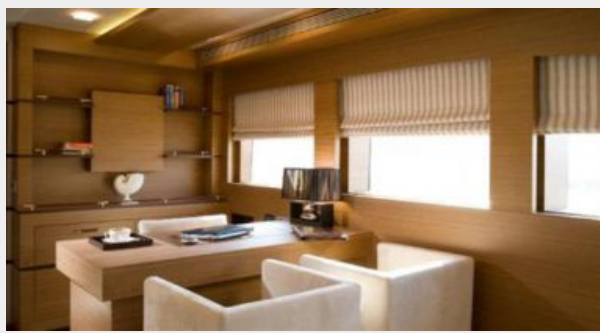
Engine Information

Manufacturer: MTU

PHOTOS











CONTACTS

Andrey Shestakov, leading yacht broker of the sales department of Shestakov Yacht Sales Inc. Shestakov Yacht Sales Inc., the official representative of the Miami/Fort Lauderdale FL headquarters.

Contact details

Email: andrey@shestakovyachtsales.com

Web: shestakovyachtsales.com/en/

Telephones

USA: +1(954)274-4435

Office hours

Monday – Saturday: **9:00 - 21:00** EDT

Sunday: **closed**

Address



Harbour Towne Marina, 850 NE 3rd St,
STE 213, Dania, FL 33004