

## BLACK SHADOW — SEA FORCE IX



**Builder:** SEA FORCE IX

**Year Built:** 2006

**Model:** Sport Fisherman

**Price:** PRICE ON APPLICATION

**Location:** United States

**LOA:** 81' 5" (24.82m)

**Beam:** 22' 11" (6.98m)

**Min Draft:** 6' 0" (1.83m)

**Max Draft:** 6' 6" (1.98m)

Our experienced yacht broker, Andrey Shestakov, will help you choose and buy a yacht that best suits your needs **Black Shadow — SEA FORCE IX** from our catalogue. Presently, at **Shestakov Yacht Sales Inc.**, we have a wide variety of yachts available on our sale's list. We also work in close contact with all the big yacht manufacturers from all over the world.

If you would like to buy a yacht **Black Shadow — SEA FORCE IX** or would like help answering any questions concerning purchasing, selling or chartering a yacht, please call **+1(954)274-4435**

# TABLE OF CONTENTS

|                                       |    |
|---------------------------------------|----|
| TABLE OF CONTENTS                     | 2  |
| SPECIFICATIONS                        | 6  |
| Overview                              | 6  |
| Basic Information                     | 6  |
| Dimensions                            | 6  |
| Speed, Capacities and Weight          | 6  |
| Accommodations                        | 6  |
| Hull and Deck Information             | 6  |
| Engine Information                    | 7  |
| DETAILED INFORMATION                  | 8  |
| Salon                                 | 8  |
| Salon Entertainment Center            | 8  |
| Walk-In Bar Area                      | 8  |
| Galley                                | 9  |
| Dinette                               | 9  |
| Companionway                          | 9  |
| Master Stateroom                      | 10 |
| Master Stateroom Entertainment Center | 10 |
| Master Stateroom Head                 | 10 |
| Guest Stateroom, Starboard            | 11 |
| Guest Head                            | 11 |
| VIP Stateroom                         | 11 |
| VIP Stateroom Head                    | 12 |
| Captain/Crew Stateroom                | 12 |
| Crew Stateroom Head                   | 13 |
| Cockpit                               | 13 |
| Flybridge                             | 14 |
| Flybridge Aft Station                 | 15 |

|                                 |    |
|---------------------------------|----|
| Tower                           | 15 |
| Electronics                     | 16 |
| Deck / Hull                     | 17 |
| Engine Room                     | 17 |
| Exclusions                      | 18 |
| Important Comments              | 18 |
| Remarks                         | 18 |
| Exclusions                      | 19 |
| Disclaimer                      | 19 |
| PHOTOS                          | 20 |
| Salon                           | 20 |
| Salon                           | 20 |
| Salon                           | 20 |
| Salon                           | 20 |
| Wet Bar                         | 20 |
| Salon                           | 20 |
| Stairsway to Enclosed Flybridge | 21 |
| Galley                          | 21 |
| Galley                          | 21 |
| Galley                          | 21 |
| Galley                          | 22 |
| Dinette                         | 22 |
| Companionway                    | 22 |
| Dinette                         | 22 |
| Master Stateroom                | 23 |
| Master Stateroom                | 23 |
| Master Stateroom                | 23 |
| Master Stateroom                | 23 |
| Master Stateroom Head           | 24 |

|                            |    |
|----------------------------|----|
| Master Stateroom Head      | 24 |
| VIP Stateroom              | 24 |
| VIP Stateroom              | 24 |
| VIP Stateroom Head         | 25 |
| VIP Stateroom Head         | 25 |
| Guest Stateroom, Starboard | 25 |
| Guest Stateroom, Starboard | 25 |
| Guest Stateroom Head       | 26 |
| Guest Stateroom, Starboard | 26 |
| Captain/Crew Stateroom     | 26 |
| Captain/Crew Stateroom     | 26 |
| Captain/Crew Stateroom     | 27 |
| Cockpit                    | 27 |
| Cockpit                    | 27 |
| Cockpit                    | 27 |
| Cockpit                    | 27 |
| Enclosed Flybridge         | 27 |
| Enclosed Flybridge         | 28 |
| Enclosed Flybridge         | 28 |
| Enclosed Flybridge         | 28 |
| Flybridge Aft Station      | 28 |
| Tower                      | 28 |
| Engine Room                | 28 |
| Engine Room                | 29 |
| Engine Room                | 29 |
| Engine Room                | 29 |
| Engine Room                | 29 |
| Black Shadow               | 29 |
| Black Shadow               | 29 |

|                 |    |
|-----------------|----|
| Black Shadow    | 30 |
| Black Shadow    | 30 |
| Black Shadow    | 30 |
| Black Shadow    | 30 |
| CONTACTS        | 31 |
| Contact details | 31 |
| Telephones      | 31 |
| Office hours    | 31 |
| Address         | 31 |

# SPECIFICATIONS

## Overview

On Display-Ft. Laud International Boat Show, D DOCK SOUTH-Lime Zone AB201-220, 239-248

## Basic Information

|                           |                        |
|---------------------------|------------------------|
| Category: Sport Fisherman | Model Year: 2007       |
| Year Built: 2006          | Country: United States |

## Dimensions

|                          |                          |
|--------------------------|--------------------------|
| LOA: 81' 5" (24.82m)     | Beam: 22' 11" (6.98m)    |
| Min Draft: 6' 0" (1.83m) | Max Draft: 6' 6" (1.98m) |

## Speed, Capacities and Weight

|                             |                          |
|-----------------------------|--------------------------|
| Water Capacity: 500 Gallons | Holding Tank: 80 Gallons |
| Fuel Capacity: 3700 Gallons |                          |

## Accommodations

|                 |                |
|-----------------|----------------|
| Total Cabins: 4 | Crew Berths: 3 |
|-----------------|----------------|

## Hull and Deck Information

Hull Material: Fiberglass

## Engine Information

---

**Engines:** 2

**Manufacturer:** MTU

**Model:** 16V2000 M93

**Engine Type:** Inboard

**Fuel Type:** Diesel

---

## DETAILED INFORMATION

---

### Salon

---

As you enter the salon, the sheer openness and elegance is evident throughout. Her rich European Cherry joinery work is abundant but yet not overpowering. The salon blends seamlessly into the galley and dinette area and there is an open spiral staircase to the flybridge.

- L-shaped leather sofa to port, hinged for easy access to storage area beneath
- End table with storage and Granite countertops
- Custom electric sliding and adjustable coffee table
- Duette window blinds
- Center access doors with full windows
- Pioneer Elite 60" TV, raised electrically
- Sony 40" TV, raised electrically for cockpit viewing
- Glass storage area
- TV input menu switch
- Carpet runner
- 3 bar stools covered in ostrich skin with polished stainless pedestals
- Polished stainless foot rail
- Flybridge access ladder, polished stainless and cherry steps
- European Cherry wood lambrequin and soffits
- Trayed ceilings with diffused A/C vents
- Overhead lighting on dimmer switches
- Indirect lighting beneath sofa
- Hard wired lamp

### Salon Entertainment Center

---

- Sony DA-5200ES stereo receiver
- Pioneer Elite TV
- Sony flat screen TV
- Surround sound system
- Sea 157 VHF radio
- MX-980 simple remote for TV and entertainment system

### Walk-In Bar Area

---

- Located to starboard in main salon
- Granite countertops with cherry sea rail
- Bar sink with faucet, under mounted



- Cherry & Holly wood sole
- Scotsman clear cube ice maker
- Liquor storage area
- Fitted glassware storage area
- Duette window blinds

---

## Galley

The galley is very spacious and user friendly. There is an abundance of storage throughout as well as all the modern conveniences expected in today's world.

- Granite countertops
- Under mount sink with garbage disposal
- GE flush mounted 5 burner cooktop with exhaust vent
- 2 Fisher Paykel stainless dishwashers, upper and lower drawer
- GE Monogram built in oven
- SubZero drawer style under counter refrigerator
- SubZero 642 full size refrigerator and freezer
- Brewmatic automatic built in coffee maker
- Microwave oven
- Cherry & Holly sole
- SubZero wine cooler
- Built in glass and plate storage areas
- Sub electrical panel

---

## Dinette

- Dinette comfortably seats 5
- Granite dinette table top with polished stainless hardware
- Large storage area beneath dinette and access to storage area outboard

---

## Companionway

- Offset to starboard to maximize use of space
- Granite countertops with cherry searail
- Door covered shelf storage lockers
- Twin bookcases
- Highlighted artwork showcase area
- Cedar lined linen closet
- Lighting on dimmer switches
- Indirect lighting

- Central vacuum storage locker and outlet

---

## Master Stateroom

---

The master stateroom is located amidship and is nearly full beam. The décor is richly appointed in European Cherry wood and the finest fabrics.

- Centerline king berth that lifts electrically to access more cedar lined storage throughout
- Additional drawer storage around berth
- Port and starboard night stands with Granite countertops and cherry searail
- Nightstands with drawer and shelf storage
- Hard wired his and her reading lamps
- His and her cedar lined hanging lockers with additional shelving inside
- Leather upholstered headboard
- Make up vanity area with storage inside
- Leather upholstered vanity chair
- 8 drawer credenza below TV
- His and her shelf storage lockers, port and starboard of TV
- Tray ceiling with A/C discharge
- Sentry safe located beneath master berth
- Lighting on dimmer switches
- Indirect lighting
- Universal remote controller

---

## Master Stateroom Entertainment Center

---

- Pioneer 48' flat screen TV
- Denon stereo receiver
- Surround sound
- Sat TV and radio input
- iPod dock

---

## Master Stateroom Head

---

- Pioneer 48' flat screen TV
- Denon stereo receiver
- Surround sound
- Sat TV and radio input
- iPod dock

---

## Guest Stateroom, Starboard

---

The port guest stateroom is just forward of the master. This stateroom features side by side twin berths separated by a movable end table. When table is removed berths can be converted to create a king berth.

- Side by side twin berths
- Upholstered leather headboards trimmed in European cherry
- Both headboards are hinged to access large storage areas
- Drawer storage below each berth
- End table, removable to convert berths to king bed
- End table with granite top and searail
- Cedar lined hanging locker with shelf storage
- Fluted wood soffits for A/C distribution
- Samsung flat screen TV
- Sony DVD player
- Separate access from companionway as well as guest head
- Overhead lighting on dimmer switches
- Indirect lighting

---

## Guest Head

---

- Mirrored vanity above with shelf storage
- Granite countertop with under mount sink
- European Cherry vanity below with drawer and shelf storage
- Cherry & Holly sole
- Headhunter head with large bowl
- Stall shower trimmed, complete with Corian and glass swinging door
- Mirrored ceiling
- Access from companionway as well as guest stateroom

---

## VIP Stateroom

---

The VIP stateroom is located centerline and is forward in the vessel. This stateroom is richly appointed, trimmed in European Cherry and the berth is a king size. There is an abundance of storage throughout and features a private ensuite head.

- Centerline king berth that lifts electrically to access cedar lined storage area
- Port and starboard concealed shelf storage
- Granite countertops with cherry searails
- Large storage lockers built into Granite tops
- Port and starboard outboard storage areas concealed behind cherry door panels

- Cedar lined hanging locker
- Fluted valances for A/C discharge
- Overhead hatch with shade
- His and hers reading lights
- Overhead lighting on dimmers
- Indirect lighting
- Samsung flat screen TV
- Sony DVD player
- Private access to VIP head

---

## VIP Stateroom Head

---

- Mirrored vanity above with shelf storage
- Granite countertop with under mount sink
- European Cherry credenza with drawer and shelf storage
- Headhunter head with large bowl
- Fluted valances with A/C discharge
- Cherry & Holly sole
- Stall shower trimmed complete with Corian
- Exhaust vent

---

## Captain/Crew Stateroom

---

The captain/crew stateroom is located just forward of the engine room and can be accessed by either the engine room or main companionway. The stateroom is a split design with private captain's stateroom to port and crew berths to starboard. The common area between berths contains laundry area as well as head and shower. Access from companionway is via a sliding pocket door and from engine room a water tight sealed door.

### Captain's Area

- Single berth with storage below
- Abundance of shelf storage throughout
- Hanging locker
- Reading light
- Simrad remote speaker
- Pocket door for privacy
- Samsung 19" flat panel TV
- Captain's safe

### Crew Area

- Upper and lower berths with storage below lower berth
- Shelf storage outboard of each berth
- Reading lights
- Panasonic telephone
- Miele washer and dryer, stacked
- Ship's alarm monitoring panel
- Fresh water, black water and tank level gauges
- Ship's sub electrical panel
- Access to attic (behind galley) storage area

---

## Crew Stateroom Head

---

- Mirrored vanity above
- Molded Corian countertop with stainless under mount sink
- Storage locker below sink
- Private head area trimmed in Corian
- Storage locker to port
- Stall shower
- Dometic electric head
- Water tight access door to engine room

---

## Cockpit

---

- Center access salon entry door
- Raised mezzanine seating deck with A/C vents
- Port and starboard drink boxes with varnished lids
- Teak mezzanine
- External input plug for latham camera system
- 32" TV viewable from cockpit with multiple inputs
- Port and starboard stainless freezers
- Aluminum flybridge ladder with teak steps
- Teak cockpit sole
- Teak covering boards with rolled gunnels
- Port and starboard removable fish boxes
- Port and starboard lazette accesses with water tight hatches
- Walkthrough tuna door
- Transom fishbox
- Corner transom hawse pipes
- Port and starboard 100 amp shore cords with cabledmasters
- Port and starboard tackle lockers with drawer storage
- DC electric reel outlets, port and starboard
- Clearing rod holders mounted on tower legs

- Bluewater fighting chair with offset station
- Bluewater teak rocket launcher
- Overhead lighting
- JL audio speakers mounted in overhang
- Port and starboard on deck livewell outlets
- Fresh and salt water wash down spigots
- Cockpit awning canvas cover
- Cockpit cover
- Engine room access door, water tight

## Flybridge

---

The enclosed flybridge affords exceptional visibility and versatility, basically doubling as a skylounge. There is an abundance of seating and storage throughout including spiral staircase from lower salon and a wet bar with ice machine.

- 4 individual forward facing helm chairs covered in leather with armrests, mounted on European Cherry wood credenzas with drawer storage below
- Centerline helm with single lever controls
- Centerline adjustable helm chair covered in leather
- Spiral staircase access from lower salon
- L-shaped leather sofa to port with storage
- Port and starboard overhead rod lockers
- Wet bar with Granite countertop and under mount sink
- Bar glass storage area
- Liquor bottle storage cabinet
- Scotsman automatic ice machine
- Fluted upholstered soffits with A/C discharge
- End table with Granite top and drawer & shelf storage
- Hard wired decorative lamps
- Surround sound system
- Custom wood cocktail table with polished chrome pedestal
- Large storage area forward of helm
- Ship's alarm and monitoring panel
- Naiad bow thruster control
- Wipers with freshwater rinse nozzles
- MTU main engine ECM displays
- MTU control panel
- Centerline compass
- Trim planes operation panel
- Carlisle & Finch automatic spotlight
- Kahlenberg air horns
- Latham camera system

- HP printer
- Viera 40" flat screen TV on electric lift
- DC battery bank for back up power for electronics
- Red and white lights over helm console
- Access to aft deck control station
- Sunshade screens for inside bridge windows

---

## Flybridge Aft Station

---

- Helm station offset to starboard
- MTU main engine ECM displays
- Single lever controls
- Hydraulic wheel steering
- Trim plane switches
- External input for latham camera system
- Main engine start and stop switches
- Hydraulic outrigger controls
- Simrad rudder angle indicator
- JL audio stereo speaker
- Stainless lined freezer inside port bench seat
- Miya Epoch US#9R teaser reels with remotes
- VEI daybright monitor with multi input switcher
- Standard Horizon GX5500S VHF radio
- Aft rail rocket launcher
- Aluminum access ladder to cockpit
- NAIAD bow thruster control
- Fresh water spigot
- Canvas cover

---

## Tower

---

- American Bausch full tuna tower
- Molded hardtop and standing platform
- Bench seat built into aft rail
- 5 molded in spreader lights, 3 aft, 2 side and 1 forward
- Blacked out dash in tower console
- MTU engine control binnacle, full function, mounted to starboard
- Hydraulic wheel steering
- Molded in overhead electronics box
- Rocket launcher aft flybridge station
- Fresh water spigot

---

## Electronics

---

The flybridge, aft deck and tuna tower contain an extensive electronics package used at all stations.

### Flybridge Electronics

- 4 - 15" VEI monitors with multi input switches
- Furuno 2127X band 120 mile range radar
- Furuno 2137S band 120 mile range radar
- NVTI thermal imaging camera
- 2 - Furuno FCV1200L black box color depth sounds with separate transducers
- Garmin 5212 GPS/plotter/sounder with touch screen
- KVH FB500 satellite communications system for voice and data
- KVH M9 Sat TV system with Tri LNB
- Simrad AP500 autopilot
- Nobeltec plotting and navigating software
- Nobeltec Catch Fishing software
- 2 - VEI screen resolution control panels
- Engine room cameras, feed to bridge monitor
- Sirens Rogue wave WiFi system
- 2 - VEI Oceanview computers, 11/2015
- Sirius satellite weather system
- Sirius satellite radio receiver
- Furuno digital satellite compass
- Furuno AIS transceiver, receiver
- B & G hydro 2000
- Cell phone amplifier
- 2 Standard Horizon GX 5500S VHF radios
- Icom M802 SSB radio
- HP printer

### Aft Flybridge Station Electronics

- MTU main engine ECM displays
- VEI daybright monitor
- Input switching panel for monitor
- Simrad rudder angle indicator
- Standard Horizon GX5500S VHF radio
- NAIAD bow thruster control

### Tower Electronics (molded overhead electronics box)

- 2 Garmin 10" displays, touch screen showing GPS/plotter and color depth sounder



- Standard Horizon GX5500S VHF radio
- Standard Horizon VLH3000 loud hailer
- Simrad rudder angle indicator
- Simrad Q850 autopilot remote with joystick
- B & G hydro 2000 digital display

---

## Deck / Hull

---

- American Bausch tuna tower
- Vestial white hull and topsides
- Black bottom paint, May 2017
- NAIAD stabilizer system
- Hydraulic bow thruster
- 4" main prop shafts
- Dripless shaft seals with spares
- Teak transom
- Full transom cover
- Teak toe rail
- Toe rail cover
- Underwater lights
- Hydraulic windlass
- Anchor and anchor rode
- Anchor chute
- Black window mask
- Removable window mask cover
- Washdown spigot inside anchor locker

---

## Engine Room

---

- Twin MTU 16V2000 M93, 2400hp engines with 1850 hours
- Twin Northern Lights 40kw generators, 1500 hours port and starboard
- Alfa level fuel polishing system with transfer capability
- NAIAD marine stabilizer system
- NAIAD hydraulic bow thruster
- Seastar hydraulic steering system
- Twin Sea Recovery watermakers, 1400 GPD each
- 2 fire suppression systems, automatic and manual operation
- Marine Air chilled water A/C system with 3 chillers, replaced May 2017
- Each main engine has separate hydraulic pumps mounted on gear boxes
- 4 mastervolt battery chargers
- Upgraded exhaust risers
- Water tight and fire proof entry doors

- MTU main engine digital displays mounted in overhead
- Remote mounted generator gauge panels
- Remote main engines start and stops
- Engine room camera system with 4 cameras
- Fuel sight tubes on port and starboard day tanks
- Eskimo ice machine
- 4" main propeller shafts, removed and inspected 10/2015
- Dripless shaft seals with spares in keepers, 10/2015
- Fuel supply and transfer system with 2 pumps, 1 AC power and the back up DC power
- Battery 24 volt switching panel
- Fuel transfer for tender with counter
- Main engine fuel prime pumps
- Generator fuel prime pumps
- AC/DC lighting throughout
- Oil change system with clean lube oil tanks approx. 90 gallons
- Ship's electrical input and generator output switching panels
- AC/DC sub electrical panels
- Twin Headhunter Mach V fresh water pumps, zoned and plumbed each as back up
- 2 hot water heaters
- Air compressor
- StingRay Headhunter wash down pump

## Exclusions

---

- Mounted sailfish
- Gold Lady artwork

A detailed list of excluded artwork will be provided at time of executed contract.

## Important Comments

---

In 2010 and 2012 while moored the Black Shadow suffered indirect lighting strikes. Insurance claims were filed for both incidents and the appropriate repairs were made by authorized technicians.

## Remarks

---

Black Shadow represents an outstanding value in a custom built, lightly used sportfisherman with only 1850 original hours. Always maintained to the highest standards by her original owner, she is offered for sale at a fraction of replacement cost. She is located in North Palm Beach and easy to see. **\*\*Seller will entertain trades and is looking for offers\*\***

---

## Exclusions

---

Owner's personal belongings.

---

## Disclaimer

---

The Company offers the details of this vessel or yacht in good faith but cannot guarantee or warrant the accuracy of this information nor warrant the condition of the vessel. A buyer should instruct his representatives, agents, or his surveyors, to investigate such details as the buyer desires validated. This vessel or yacht is offered subject to prior sale, price change, or withdrawal without notice.

# PHOTOS

Salon



Salon



Salon



Salon



Wet Bar



Salon



## Stairway to Enclosed Flybridge



## Galley



## Galley



## Galley





**Galley**



**Dinette**



**Dinette**



**Companionway**



**Master Stateroom**



**Master Stateroom**



**Master Stateroom**



**Master Stateroom**



**Master Stateroom Head**



**Master Stateroom Head**



**VIP Stateroom**



**VIP Stateroom**





**VIP Stateroom Head**



**VIP Stateroom Head**



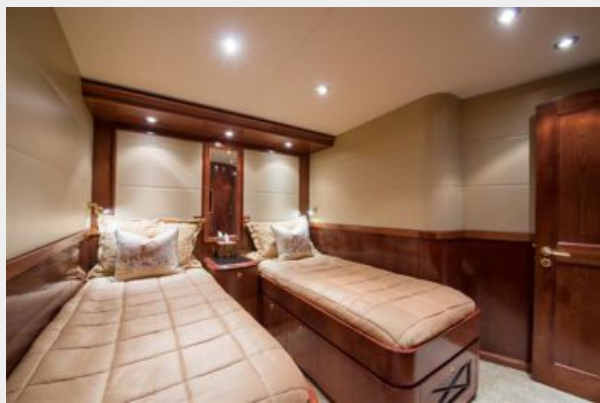
**Guest Stateroom, Starboard**



**Guest Stateroom, Starboard**



**Guest Stateroom, Starboard**



**Guest Stateroom Head**



**Captain/Crew Stateroom**



**Captain/Crew Stateroom**



**Captain/Crew Stateroom**



**Cockpit**



**Cockpit**



**Cockpit**



**Cockpit**



**Enclosed Flybridge**





**Enclosed Flybridge**



**Enclosed Flybridge**



**Enclosed Flybridge**



**Flybridge Aft Station**



**Tower**



**Engine Room**



**Engine Room**



**Engine Room**



**Engine Room**



**Engine Room**



**Black Shadow**



**Black Shadow**

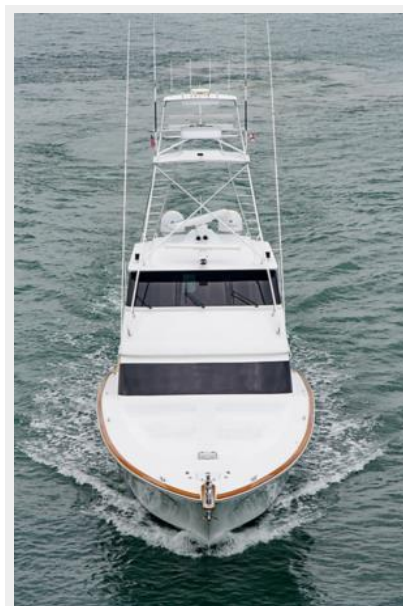




**Black Shadow**



**Black Shadow**



**Black Shadow**



**Black Shadow**



# CONTACTS

---

Andrey Shestakov, leading yacht broker of the sales department of Shestakov Yacht Sales Inc. Shestakov Yacht Sales Inc., the official representative of the Miami/Fort Lauderdale FL headquarters.

## Contact details

---

Email: **andrey@shestakovyachtsales.com**

Web: [shestakovyachtsales.com/en/](http://shestakovyachtsales.com/en/)

## Telephones

---

USA: **+1(954)274-4435**

## Office hours

---

Monday – Saturday: **9:00 - 21:00 EDT**

Sunday: **closed**

## Address

---



Harbour Towne Marina, 850 NE 3rd St,  
STE 213, Dania, FL 33004