

## NO NAME — PERSHING



**Судостроитель:** PERSHING

**Год постройки:** 2010

**Модель:** Крейсер

**Цена:** ЦЕНА ЯХТЫ ПО ЗАПРОСУ

**Местонахождение:** United States

**Длина общая:** 64' 0" (19.51m)

**Ширина:** 16' 5" (5.00m)

**Макс. осадка:** 4' 4" (1.32m)

**Крейс. скорость:** 38 Kts. (44 MPH)

**Макс. скорость:** 44 Kts. (51 MPH)

Купить No Name — PERSHING а также выбрать подходящую вам яхту из нашего каталога яхт вам поможет опытный яхтенный брокер Андрей Шестаков. На сегодняшний день компания Shestakov Yacht Sales Inc. имеет большое количество яхт в собственном списке продаж, а также тесно сотрудничает со всеми крупными яхтенными производителями по всему миру.

Для того чтобы купить яхту No Name — PERSHING а также проконсультироваться по любому вопросу связанному с покупкой, продажей, чартером яхт позвоните по телефону **+7(918)465-66-44**.

# ОГЛАВЛЕНИЕ

---

ОГЛАВЛЕНИЕ	2
ХАРАКТЕРИСТИКИ	3
Обзор	3
Основная информация	3
Размеры	3
Скорость, вместимость и масса	3
Размещение	3
Корпус и палуба	4
Информация о двигателе	4
ПОДРОБНОЕ ОПИСАНИЕ	5
Vessel Information	5
Исключения	11
Отказ от ответственности	11
ФОТОГРАФИИ	12
КОНТАКТЫ	16
Контактная информация	16
Телефоны	16
Время работы	16
Адрес	16

# ХАРАКТЕРИСТИКИ

## Обзор

There is an adage that fashions come and go, but style lasts forever... The Pershing 64 holds true to this maxim delivering unrivaled elegance while boasting the epitome of luxury, comfort and space. This Pershing 64 has just 225 hours and features brand new exterior cushions designed by CAY Marine, a recent paint job by CAY Marine and much much more. This is by far the best deal on a Pershing in The united states period. Call for Details. **On display at the Fort Lauderdale International Boat Show on D-Dock. Additional Photos Coming Soon.**

## Основная информация

Тип судна: Крейсер

Модельный год: 2010

Год постройки: 2010

Страна: United States

## Размеры

Длина общая: 64' 0" (19.51m)

Ширина: 16' 5" (5.00m)

Макс. осадка: 4' 4" (1.32m)

## Скорость, вместимость и масса

Крейс. скорость: 38 Kts. (44 MPH)

Макс. скорость: 44 Kts. (51 MPH)

Водоизмещение: 92815 Pounds

Вместимость воды: 238 Gallons

Объем топливного бака: 925 Gallons

## Размещение

Всего кают: 3

---

## Корпус и палуба

---

**Материал корпуса:** Fiberglass

---

## Информация о двигателе

---

**Двигатели:** 2

**Производитель:** MAN

**Модель:** V12-1550

---

# ПОДРОБНОЕ ОПИСАНИЕ

---

## Vessel Information

---

### Upgrades and Notables

- Hull paint job in Mercedes metallic silver by CAY Marine 2015
- Hardtop and accessories paint job in Mercedes metallic silver by CAY Marine 2015
- All new exterior Hermes orange cushions by CAY Marine 2015
- Fresh Bottom paint by CAY Marine October 2015
- Teak decks refinished by CAY Marine October 2015
- Midnight Star Black Countertops upgrade
- Engines recently serviced 2015

### Aft Deck

- L-shaped bench seat with new Hermes Orange cushions
- Hi/low table
- Teak decks
- Access hatch to engine room
- (7) Courtesy lights in overhead
- Sliding door to salon
- Aft glass window lowers into deck
- Control pad to garage hatch, passerelle and swim ladder
- Cut-off switches to ship service and engine start
- Access to Crew cabin
- Sun-pad
- Over head extendable awning

### Salon

- Wenge wood laminate floorings
- 30" Sharp LED TV
- Recessed overhead lights with stainless steel housings
- Large retractable sun roof forward
- Bose surround sound stereo speakers
- L-Shaped seating to starboard
- Chaise lounge to port with custom back rest
- Leather covered dash panel and area around helm
- Ice maker
- Powered windows to port and starboard
- Refrigerator
- DVD player
- Satellite TV KVH

- Stereo controls
- Electric blinds to port and starboard and aft
- Main A.C./D.C. electrical distribution
- Climate controls

## Helm and Electronics

- Ray marine E120 multifunction display (GPS/Chart-plotter/radar)
- Raymarine rudder indicator
- Raymarine Autohelm series autopilot
- MAN engine display panel to port and starboard
- VHF radio
- Oversized leather helm seat
- Helm console
- White Star compass
- Leather wrapped steering wheel
- ZF electronic throttle controls
- Searchlight control
- Fire system engine shutdown override panel
- Systems switch panel
- Vinyl overhead liner
- Engine start and stop bottoms to port and starboard
- Lever controls to bow and stern thruster, flaps and trim tabs with indicators

## Galley

- Bosch 4-burner cooktop
- Miele dishwasher
- Bosch refrigerator and freezer
- Extraction fan over
- Stainless steel sink with cutting board cover
- Designer faucet with retractable feature
- Midnight Star black granite countertops
- Stainless steel back splash
- Vimar switches with gloss black housings
- Vimar receptacles with gloss black housings
- Wenge wood laminate floorings
- Oak cabinetry and accents with satin finish
- Opening porthole in stainless steel and tempered glass with hook
- Recessed lights with stainless steel housings
- Breakers for galley services
- Rubbish bin
- Stainless steel grab rail

- Overhead lockers
- Panasonic Microwave oven
- Air conditioning controls

#### VIP Stateroom

- Queen island berth
- Oak cabinetry and accents with satin finish
- Premium carpet through out
- Lacquered paneled ceiling
- Vimar switches with gloss black housings
- Vimar receptacles with gloss black housings
- Overhead Bomar hatch
- Overhead Oceanair black out screen
- Recessed lights with stainless steel housing
- Porthole to port and starboard
- Electric blinds
- Mirrored headboard
- Poltrona frau leather accents and wall coverings
- (2) Snake style reading lights to port and starboard
- Sound system controls
- Air conditioning touch panel
- Hanging locker, with light, port and starboard
- LED flatscreen TV

#### Starboard Guest

- (2) Single side by side berths
- Head board and sides in Poltrona Frau leather
- Oak cabinetry and accents with satin finish
- Premium carpet through out
- Lacquered paneled ceiling
- Recessed overhead lights with stainless steel housings
- (2) Portholes
- Electric miniblinds
- Vimar switches with gloss black housings
- Vimar receptacles with gloss black housings
- (2) Snake style reading lights to port and starboards
- Hanging locker with light
- Large mirror
- Samsung LED flatscreen TV
- Air conditioning controls
- Stereo controls

#### Guest Head

- Oak cabinetry and accents with satin finish
- Wenge wood laminate floorings
- Lacquered paneled ceiling
- Recessed overhead lights with stainless steel housings
- Vanity with sink
- Stainless steel designer faucet
- Stainless steel towel rack
- GFI outlet receptical
- Mirror medicine cabinet
- Opening porthole in stainless steel and tempered glass with hook
- Tecma electric freshwater head
- Stall shower with overhead light and showerhead on hose with adjustable wall mount

### Master Stateroom

- Full beam master with king sized centerline berth
- Head board and sides in Poltrona Frau leather
- Oak cabinetry and accents with satin finish
- Premium carpet through out
- Lacquered paneled ceiling
- Recessed overhead lights with stainless steel housings
- (2) Large windows to port and starboard
- (2) Opening portholes to port and starboard
- Nightstands to port and starboard
- (2) Snake style reading lamps
- Samsung LED flatscreen TV
- Large hanging locker with overhead light
- Air conditioning controls
- Electric blinds and shades to port and starboard
- Stereo controls
- Refrigerator
- Chaise lounge to port
- Vanity to Starboard with make up station

### Master Head

- Entrance via master stateroom, port side, aft
- Tecma electric freshwater head
- Oak cabinetry and accents with satin finish
- Wenge wood laminate floorings
- Lacquered paneled ceiling
- Recessed overhead lights with stainless steel housings
- Mother of Pearl backsplash



- Vanity with sink
- (2) Faucets
- Porthole with miniblind
- Mirror above vanity with medicine cabinet
- Shower stall with overhead light, Mother of Pearl tile walls and floors and adjustable showerhead on hose
- water faucet, glass door, overhead shower head and Mosaic tile

## Equipment

- Bow thruster
- Stern thruster
- Two underwater lights, centerline aft

## Engine Room Mechanical Equipment

- Entrance via aft deck hatch with entry ladder
- Kohler 23-kw generator with gas/waster exhaust separator, and fuel filter
- Two Arneson drive hydraulic trim units
- 24-volt freshwater pump with accumulator tank
- 24-volt bilge pump to five-compartment manifold
- 24-volt gray water pump
- 24-volt anchor washdown/fire pump
- 24-volt black water pump
- Electric/hydraulic pack for passerelle
- Electric/hydraulic pack for accessory hydraulics
- Hydraulic steering system for Arneson drives with reservoir
- Fluorescent light fixtures with safety lens
- 24V emergency lights
- Two electric/automatic bilge pumps
- Two high water alarm switches
- Fire system auto and manual release
- Air compressor
- Two 12-volt batteries to each engine [forward of each engine]
- Four 12-volt batteries for 24-volt house service, starboard outboard
- MANN fuel filters to each engine
- Racor filter to generator
- ZF main E boxes for clutch and throttle controls
- Mastervolt 24/75 battery charger
- Mastervolt 24/50 battery charger
- Engine raw water diverter valves for emergency bilge pumping capabilities, port and starboard
- Condaria chilled water air conditioning system with: Two compressors, Raw water pump,
- Chilled water pump, Digital controller.
- Fiberglass fuel tank, forward with sight tube

- Cablemaster 100-amp electric reel and collector drum
- Shore power transformer
- Battery cut-off switch to ship's service
- Battery cutoff switch to generator

## Engine Room

- MAN 1550hp engines with just 225 hours
- Algy X fuel polisher
- 20 Kw Kohler generator
- (2) Coupling joint between adaptor and searex flange
- Engine room DC lighting
- Block heaters
- (2) Engine exhaust muffler
- (2) Waterproof fixed explosion-proof neon light
- (4) Stainless steel engine exhaust raiser
- AC units
- Access to engine room from cockpit
- Dynamic air intakes
- GRP sandwiched stratified plank ribbing covered in anti-slip material
- Hydraulic unit for gangway and garage hatch
- Hydraulic unit for steering compartment trims and trim tabs
- Hydraulic unit for swim ladder and aft sliding door
- Thermal acoustic insulation

## Deck Equipment

- Fiberglass deck and teak decks refinished (2015)
- Stainless steel rails and stanchions with stainless steel safety line
- Stainless steel anchor roller and chute
- Trefoil galvanized anchor with approximately 250' of chain
- Lofrans anchor windlass with capstan
- Hatch to chain locker
- Anchor washdown
- Sun lounge with pads forward deck area
- Windshield wipers
- Navigation lights to port and starboard
- Bow cleats to port and starboard
- Spring cleats to port and starboard
- Water fill to starboard
- Hardtop radar arch
- VHF antennas
- AM/FM antenna
- Remote operated searchlight
- (2) GPS antennas

- (2) Stainless steel gate for cockpit entry
- Aft garage for tender
- Fore storage with door and chain peak
- Hideaway aft sliding door in black painted aluminum and tempered glass
- Horn
- Hydraulic hideaway swim ladder in bathing platform
- Side windows made of monolithic tempered crystal
- Side windows with electric mechanism
- Signal mast in stainless steel
- Swimming platform and aft steps in teak
- Telescopic hydraulic hideaway gangway with remote control
- Windshield in transparent tempered glass
- 100-amp Cablemaster port
- Dockside water inlet to starboard
- Pop-up cleat to port and starboard
- Dockside phone/CATV inlet to port
- Passerelle to port
- Fuel fill cap to starboard

## Исключения

---

При продаже яхты исключаются личные вещи владельца.

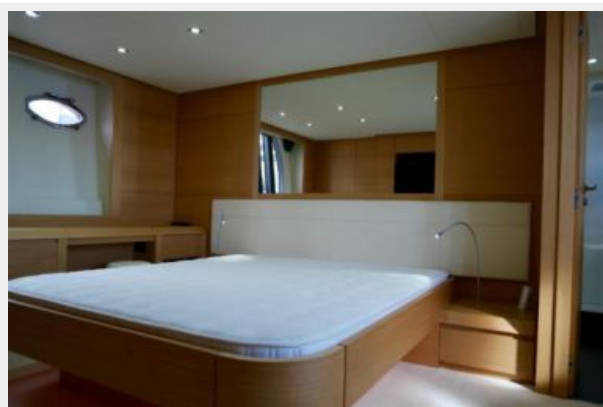
## Отказ от ответственности

---

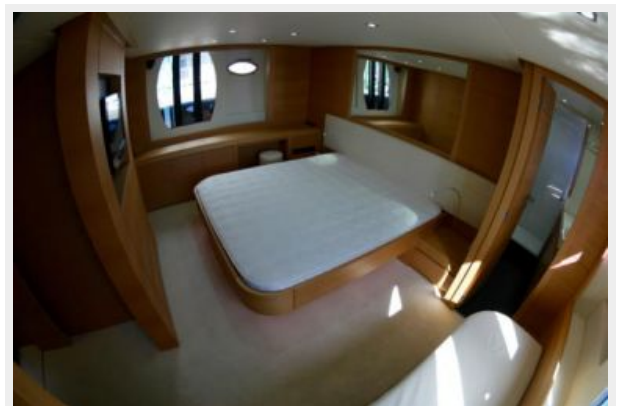
Компания предоставляет описание судна или яхты добросовестно, но не может гарантировать точность этой информации, а также не ручается за техническое состояние. Покупатель должен проинструктировать своих агентов или оценщиков исследовать представленную информацию более подробно, по собственному желанию. Продажа судна или яхты, изменение цены или снятие с продажи будет происходить без предварительного уведомления.

# ФОТОГРАФИИ











# КОНТАКТЫ

---

Андрей Шестаков (Andrey Shestakov) – ведущий яхтенный брокер отдела продаж яхт и судов компании Shestakov Yacht Sales Inc. Официальный представитель Shestakov Yacht Sales Inc. для русскоговорящих клиентов в центральном офисе компании в Майами/Форт Лодердейл/Флорида/США.

## Контактная информация

---

Email: [andrey@shestakovyachtsales.com](mailto:andrey@shestakovyachtsales.com)

Web: [shestakovyachtsales.com](http://shestakovyachtsales.com)

## Телефоны

---

Краснодарский край: **+7(918)465-66-44**

США, Майами, Флорида: **+1(954)274-4435**

## Время работы

---

Понедельник – Суббота: **9:00 - 21:00**  
EDT

Воскресенье: **Закрито**

## Адрес

---



Harbour Towne Marina, 850 NE 3rd St,  
STE 213, Dania, FL 33004