

SPOILED YACHTEN — BERTRAM



Судостроитель: BERTRAM

Год постройки: 1979

Модель: Моторная яхта

Цена: **ЦЕНА ЯХТЫ ПО ЗАПРОСУ**

Местонахождение: United States

Длина общая: 42' 0" (12.80m)

Ширина: 14' 0" (4.27m)

Мин. осадка: 4' 0" (1.22m)

Макс. осадка: 4' 0" (1.22m)

Купить **SPOILED YACHTEN — BERTRAM** а также выбрать подходящую вам яхту из нашего каталога яхт вам поможет опытный яхтенный брокер Андрей Шестаков. На сегодняшний день компания **Shestakov Yacht Sales Inc.** имеет большое количество яхт в собственном списке продаж, а также тесно сотрудничает со всеми крупными яхтенными производителями по всему миру.

Для того чтобы купить яхту **SPOILED YACHTEN — BERTRAM** а также проконсультироваться по любому вопросу связанному с покупкой, продажей, чартером яхт позвоните по телефону **+7(918)465-66-44**.

ОГЛАВЛЕНИЕ

ОГЛАВЛЕНИЕ	2
ХАРАКТЕРИСТИКИ	6
Обзор	6
Основная информация	6
Размеры	6
Скорость, вместимость и масса	6
Размещение	6
Корпус и палуба	7
Информация о двигателе	7
ПОДРОБНОЕ ОПИСАНИЕ	8
Introduction	8
Accommodations and Walk Through	9
Galley	9
Salon	10
Master Stateroom	10
Day/Guest Head	11
Guest Stateroom	11
Lower Helm	11
Flush Deck / Aft Deck	11
Deck & Hull	12
Flybridge	12
Engine Hours Disclaimer	13
Исключения	13
Отказ от ответственности	13
ФОТОГРАФИИ	14
Galley	14
Master Stateroom	14
Flybridge Forward Profile	14

Flybridge	14
Flybridge to port	14
Flybridge Aft	14
Flybridge Instruments-port	15
Flybridge Helm	15
Flybridge Instruments-starboard	15
View of Bow from Flybridge	15
Flybridge Helm	15
Flybridge Helm	15
Flushdeck aft Seating	16
Lower Helm in Flushdeck	16
Lower Helm Instruments	16
Lower Helm - forward port	16
Flushdeck to stbd	16
Flushdeck to port	16
Cabin Deck Profile	17
Forward Deck	17
Ground Tackle	17
Galley to Port	17
Guest Head - forward	17
Galley to Starboard	17
Master Ensuite Head	18
Lower Helm to port	18
Passageway to Master Stateroom	18
Lower Helm to starboard	18
MSR Closet with shelves	19
Master Berth	19
MSR Shower in Head	19
MSR to port	19

MSR full-sized Hanging Closet	20
MSR forward	20
Passageway to forward Guest Quarters	20
MSR to starboard	20
Guest V-berth	21
V-berth to starboard	21
Guest Passageway to aft Salon	21
Salon aft	21
Salon forward, starboard	21
Salon forward	21
Salon forward	22
Salon to port	22
Portside Deck	22
Salon to stbd	22
Deck aft from bow	23
Starboard Deck	23
Flushdeck Wet Bar, Refrigerator	23
New A/C compressors	23
Starboard Engine	24
VacuFlush Pump	24
Engine Room-outboard, port	24
Engine Room-outboard, starboard	24
New Hot Water Heater	24
Port Engine	24
Aft Profile	25
Port Profile	25
Stern Profile	25
Port Aft Profile	25
КОНТАКТЫ	26

Контактная информация	26
Телефоны	26
Время работы	26
Адрес	26

ХАРАКТЕРИСТИКИ

Обзор

This 42 Bertram has been in constant upgrade mode from the first day of the new owner. She is one of the finest examples of the 42 Bertram aft cabin motor yachts on the market. She needs to be inspected to believe all the work that has been performed. Including all the woodwork refinished with 10 coats of varnish in 8/15/2015. Recent bottom paint. If you're a fan of classic yachts, SPOILED YACHTEN is a must see.

Основная информация

Тип судна: Моторная яхта

Подкатегория: Flushdeck

Модельный год: 1979

Год постройки: 1979

Страна: United States

Верх: Bimini Top

Открытая палуба мостика: Да

Размеры

Длина общая: 42' 0" (12.80m)

Ширина: 14' 0" (4.27m)

Мин. осадка: 4' 0" (1.22m)

Макс. осадка: 4' 0" (1.22m)

Скорость, вместимость и масса

Водоизмещение: 39000 Pounds

Вместимость воды: 150 Gallons

Вместимость сточного бака: 60 Gallons

Объем топливного бака: 406 Gallons

Размещение

Всего кают: 2

Корпус и палуба

Материал корпуса: Fiberglass

Информация о двигателе

Двигатели: 2

Производитель: Crusader

Модель: 502 FI

Тип двигателя: Inboard

Тип топлива: Gas/Petrol

ПОДРОБНОЕ ОПИСАНИЕ

Introduction

This is one very special boat that has almost been completely rebuilt and upgraded!

Would make an excellent live-aboard or cruiser in comfort and style. This 42 Bertram has been in constant upgrade mode from the first day of the new owner. She is one of the finest examples of the 42 Bertram aft cabin motor yachts on the market. She needs to be inspected to believe all the work that has been performed. Including all the woodwork refinished with 10 coats of varnish in 8/15/2015. Recent bottom paint. If you're a fan of classic yachts, this is a must see. Below is a consolidated list of updates and upgrades:

Main Salon - New sculptured nylon carpeting, new draperies, Sunbrella cushions on sofa, flat screen TV, custom pull out storage under bar. LED accent lighting

Master Stateroom & Head - New sculptured nylon carpeting, platform queen size Sleep Number bed w/ under bed storage, bedding, custom chaise lounge w/ custom cushions, and custom closet. LED accent lighting.

Electronics and Helm - (2) Garmin 4008 chart plotters, JVC Radar, TracVision satellite receiver, New stereo in cockpit, 4 Infinity speakers, New Sony stereo in salon, VHF radio, (2) Richie lighted compasses.

Engine Details & Mechanical Equipment - Twin 502 fuel injected Repowered Crusader gas engines w/380 hp with 700 hrs., 10.5 kW Onan generator, New bow thruster and batteries (Vetus) w/ remote, 3 New windshield motors and blades, New port, and starboard batteries, 2 New fuel sending units, New horns, New service on gen, and maintenance; less than 50 hrs., New hot water tank, Battery charging system, 4 New bilge pumps, 3 Zone air conditioning.

NEW LIST:

- NEW STEREO ON BRIDGE
- NEW HORNS
- NEW BATTERIES PORT, AND STARBOARD
- NEW BOW THRUSTER & BATTERIES
- NEW S/S RUB RAILS
- NEW SONY STEREO SYS. IN SALON
- NEW TRAC VISION SAT. RECEIVER
- NEW ADDITIONAL ALUMINUM BOW ANCHOR
- NEW PORTABLE AC UNIT
- NEW SUNBRELLA BOW AND SIDE RAIL STAMOID ENCLOSURE
- NEW CUSTOM SUN TANNING PADS FOR THE BOW
- NEW CUSTOM S/S ALL AROUND LIGHTS
- NEW LED BOW LIGHTS
- NEW HOT WATER TANK

- NEW MICROWAVE OVEN
- NEW CUSTOM SCULPTURED RUGS IN MASTER
- NEW CUSTOM BRIDGE TOP, AND ISINGLASS ENCLOSURE
- NEW CAPTAIN CHAIRS IN FLYBRIDGE
- NEW LED ACCENT LIGHTING IN SALON, AND MASTER STATEROOM
- NEW COUNTER TOPS
- NEW FLAT SCREEN TV'S
- NEW MINI BLINDS
- NEW CUSTOM DASH IN LOWER STATION AND FLYBRIDGE
- NEW WHITE FACE GAUGES IN LOWER STATION AND FLY BRIDGE
- NEW SINK IN GALLEY
- NEW DRAPERIES, AND SUNBRELLA CUSHIONS ON SOFA
- NEW FULL SIZE S/S REFRIGERATOR

Accommodations and Walk Through

The traditional flush deck design gives you an amazing amount of interior space. **SPOILED YACHTEN** has two staterooms each with complete head/shower, a large Galley and Salon area, a comfortable Aft Deck with Helm and wonderful Flybridge with extra seating. Beginning forward is the Guest Stateroom. Having a large V-berth, plenty of storage and access to the forward Head, this stateroom is perfect for guests or family members. Continuing aft is the sizeable Galley area. Open to the Salon, the Galley is complete with full size refrigerator and freezer, large counter top, large sink, stove, and an abundance of cabinet space. The generous Salon makes an ideal sitting and living area. Aft down a few steps is the redesigned Master Stateroom. The Flush Deck design gives you the advantage of having a full beam Stateroom with private access to the ensuite Master Head with separate stall Shower. Having your guests forward, you have all of the privacy and space you need to relax. The master berth is queen sized and is athwartship on the starboard side allowing for plenty of floor space. At its foot on the port side is a large built-in sofa seat. The Master Head has a sink, vanity and stall shower.

The Aft Deck has the option of being fully enclosed with side doors to the foredeck and is extremely comfortable with plenty of room for seating. The lower Helm is fully functional having all of the electronics you need and great visibility for docking.

The upper Bridge is by far the most fun. With extra seating for guests and a complete compliment of electronics, this is the area you will probably be spending most of your time while cruising.

Galley

- Frigidaire full-size Refrigerator/Freezer with Ice-maker
- Cuisinart Toaster Oven
- Panasonic Microwave
- Princess 3-burner Stove with Oven

- Formica Countertops
- Large Composite single Sink with cold water pull-out spigot
- (5) Drawers
- (1) Long overhead Cabinet
- (2) Large under counter Cabinets
- (3) Large Cabinets opposite Galley
- Teak & Holly Sole with Designer Throw Rug

Salon

- (1) Large Cabinet with (2) big storage Drawers and large countertop that matches Galley countertop
- Tommy Bahama-style couch
- Rattan tall chair
- Tommy Bahama-style Coffee Table
- 29" Samsung flatscreen TV with TracVision Satellite
- Sony Audio/Video Amplifier, FM Radio
- Pioneer CD Player
- (2) Side Tables
- Designer Curtains
- Air Conditioning
- Opening Cabin Side Windows
- Sculptured Carpeting on Sole, with Designer Throw Rugs

Master Stateroom

- Queen-sized Berth with Sleep Number® foam mattress located athwartship, with easy access at side and end
- Single Berth and/or Loveseat opposite queen berth with lots of storage underneath
- Built-in Bureau with (3) drawers and opening cabinet
- Sculptured carpeted sole
- Shelf around berth
- Opening side lighted windows
- Large 2-door Closet at foot of stairs
- Large 1-door Closet with 5-6 shelves
- Air conditioning
- Ensuite Head with Separate Shower--
 - Vanity, sink, medicine cabinet, shelf
 - Opening side window
 - Teak & Holly sole

Day/Guest Head

- LectraSan toilet
- Vanity with sink, medicine cabinet
- Wet Head with shower curtain

Guest Stateroom

- V-berth
- (2) Opening hull portholes
- (1) Overhead opening hatch
- (2) 12v overhead lights
- (4) Drawers
- Large hanging closet with shelves
- Sculptured carpeted sole

Lower Helm

- All new gauges--completely updated and modernized dashboard
- Dual clutch/throttle controls
- Hydraulic steering
- Vetus bow thruster
- Garmin GPS Map 4008
- Standard VHF
- (3) Windshield Wipers
- Center opening window
- Side opening windows
- Raised double Helm seat with lots of storage
- Passenger & Captain foot rests
- Searchlight control

Flush Deck / Aft Deck

- Aft sofa comfortably seats 5-6
- Lots of storage under seat
- Aft seat, facing aft, attached to Helm seat
- Plexiglass table with chair, to starboard
- Can easily entertain 8-9 in Flush Deck area
- Free standing A/C unit
- Avanti mini-refrigerator
- Wet Bar / Bottle storage unit

- Plexiglass hard wing doors
- Opening side glass
- Aft Eisenglass with large "U" shaped zipper opening
- Ladder to Flybridge
- Ladder to Swim Platform
- Teak handrails and Hard weather boards
- Indoor/Outdoor carpet on floor
- Complete Sound System
- Fiberglass Hardtop

Deck & Hull

- Side opening doors just forward of wing doors for boarding
- SS stantions & railings with lower life lines. All enclosed in Stamoid
- Windshield Stamoid covering
- Cabin top SS handrail
- Cushions for bow seat
- Opening forward deck hatch
- (4) Side deck 10" SS cleats
- (2) Bow 10" SS cleats
- Ideal Windlass and Pulpit assembly (all aluminum)
- Delta anchor
- Chain / rope rode
- (4) Bow chocks
- Spare Danforth-type anchor
- (6) Fender baskets
- (2) 12" SS rear cleats with hause pipes
- Fiberglass Swim Platform
- SS Ladder to swim platform with teak steps
- Swing-down SS with teak steps Swim Ladder
- Recent bottom paint
- New varnish 8/15/2015

Flybridge

- 4-sided Eisenglass enclosure--SS Bimini top
- 3-sided hard weather boards on SS railing
- (2) comfortable upgraded Helm Seats
- Venturi windshield
- Updated / upgraded new Gauges and Dash Pods
- Garmin GPS 4008 chart/depth
- JRC Radar 1800

- Bow thruster control
- Searchlight control
- Compass

Engine Hours Disclaimer

Please note: Engine hours shown here are as of the original listing date and are an account of what the Listing Broker was told by the Owner and/or actual reading of the engine hour meters. The Broker cannot guarantee the accuracy of engine and/or genset hours. It is the responsibility of the Buyer and/or his Agent/Surveyor to verify engine/genset hours, as well as all other representations noted on the Listing Brochure.

Исключения

При продаже яхты исключаются личные вещи владельца.

Отказ от ответственности

Компания предоставляет описание судна или яхты добросовестно, но не может гарантировать точность этой информации, а также не ручается за техническое состояние. Покупатель должен проинструктировать своих агентов или оценщиков исследовать представленную информацию более подробно, по собственному желанию. Продажа судна или яхты, изменение цены или снятие с продажи будет происходить без предварительного уведомления.

ФОТОГРАФИИ

Galley



Master Stateroom



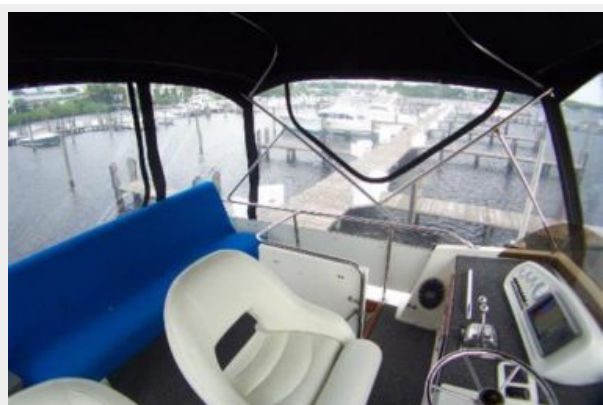
Flybridge Forward Profile



Flybridge



Flybridge to port



Flybridge Aft



Flybridge Instruments-port



Flybridge Helm



Flybridge Instruments-starboard



View of Bow from Flybridge



Flybridge Helm



Flybridge Helm



Flushdeck aft Seating



Lower Helm in Flushdeck



Lower Helm Instruments



Lower Helm - forward port



Flushdeck to stbd



Flushdeck to port



Cabin Deck Profile



Forward Deck



Ground Tackle



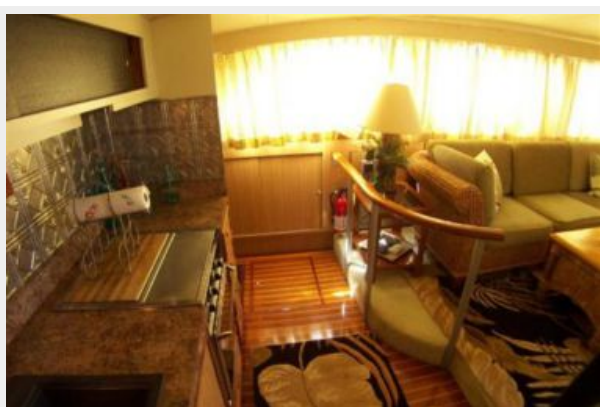
Galley to Port



Guest Head - forward



Galley to Starboard



Master Ensuite Head



Lower Helm to port



Passageway to Master Stateroom



Lower Helm to starboard



MSR Closet with shelves



Master Berth



MSR Shower in Head



MSR to port



MSR full-sized Hanging Closet



MSR forward



Passageway to forward Guest Quarters



MSR to starboard



Guest V-berth



V-berth to starboard



Guest Passageway to aft Salon



Salon aft



Salon forward, starboard



Salon forward



Salon forward



Salon to port



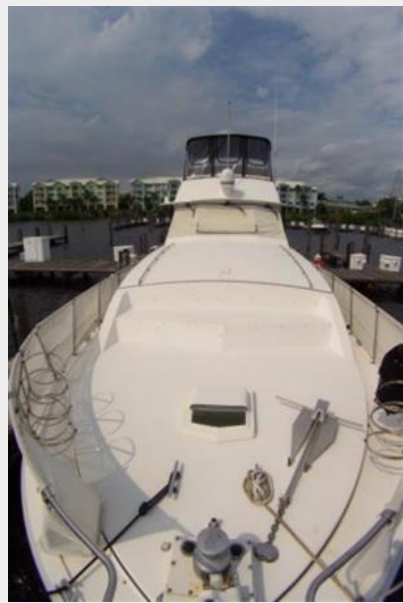
Portside Deck



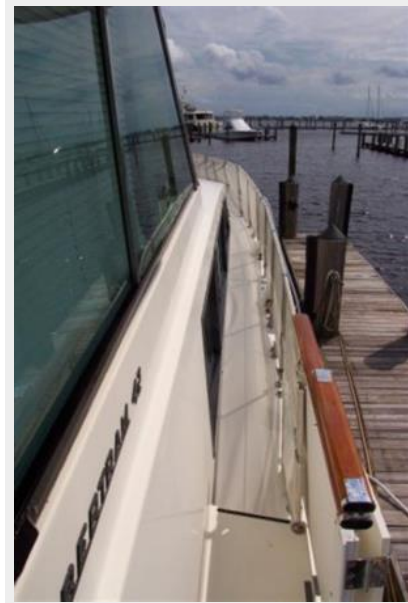
Salon to stbd



Deck aft from bow



Starboard Deck



Flushdeck Wet Bar, Refrigerator



New A/C compressors



Starboard Engine



VacuFlush Pump



Engine Room-outboard, port



Engine Room-outboard, starboard



Port Engine



New Hot Water Heater



Aft Profile



Port Profile



Stern Profile



Port Aft Profile



КОНТАКТЫ

Андрей Шестаков (Andrey Shestakov) – ведущий яхтенный брокер отдела продаж яхт и судов компании Shestakov Yacht Sales Inc. Официальный представитель Shestakov Yacht Sales Inc. для русскоговорящих клиентов в центральном офисе компании в Майами/Форт Лодердейл/Флорида/США.

Контактная информация

Email: andrey@shestakovyachtsales.com

Web: shestakovyachtsales.com

Телефоны

Краснодарский край: **+7(918)465-66-44**

США, Майами, Флорида: **+1(954)274-4435**

Время работы

Понедельник – Суббота: **9:00 - 21:00**
EDT

Воскресенье: **Закрыто**

Адрес



Harbour Towne Marina, 850 NE 3rd St,
STE 213, Dania, FL 33004