

## SHRIMP-MATES



**Year Built:** 1985

**Model:** Center Cockpit

**Price:** PRICE ON APPLICATION

**LOA:** 45' (13.72mm)

**Beam:** 13.16

**Max Draft:** 5' 5" (1.65mm)

Our experienced yacht broker, Andrey Shestakov, will help you choose and buy a yacht that best suits your needs **SHRIMP-MATES** — n/a from our catalogue. Presently, at Shestakov Yacht Sales Inc., we have a wide variety of yachts available on our sale's list. We also work in close contact with all the big yacht manufacturers from all over the world.

If you would like to buy a yacht **SHRIMP-MATES** — n/a or would like help answering any questions concerning purchasing, selling or chartering a yacht, please call **+1(954)274-4435**

# TABLE OF CONTENTS

TABLE OF CONTENTS	2
SPECIFICATIONS	4
Basic Information	4
Dimensions	4
Speed, Capacities and Weight	4
Accommodations	4
Hull and Deck Information	4
Engine Information	4
PHOTOS	5
Port Bow	5
Port Stern	5
Simpson Lawrence Manual Windlass	5
Fordeck Aft	5
Cockpit Aft	5
Aft Deck	5
Life Raft / Cockpit Forward	6
Stern / Boarding Ladder	6
Lewmar Halyard Winch	6
Lewmar 52 ST Winches	6
Repainted Mast	6
Simrad 6000 Auto-Pilot	6
Furuno GP70 GPS	7
Standard Horizon VHF (Nav Station)	7
Fr. Stateroom passageway	7
AM/FM/CD Player	7
Forward Stateroom Berth	8
Forward Stateroom Storage	8
Forward Head	8

MarineAir Reverse Cycle A/C Control	8
AC/DC Control Panel	9
Counter below Companionway	9
Galley	9
Adler Barbour Ref/Freezer 1	9
CGI Gas Stove / Oven	9
Adler Barbour Ref/Freezer 2	9
Salon	10
Port Salon Settee	10
Starboard Settee	10
Nav Station	10
Aft Master Stateroom	11
Aft Stateroom Head w/Shower Stall	11
Perkins 4-108 Diesel - 50HP (1300 hrs.)	11
Universal 6.5KW Genset (306 hrs.)	11
Battery Charger	12
HW Heater	12
Chain Locker	12
Dodger Isenglass (stowed)	12
Avon 10' Inflatable Dingy (stowed)	13
Hirsh 45 Line Drawing	13
Hirsh 45 CC Sloop - 'Shrimp-Mates'	13
<b>CONTACTS</b>	<b>14</b>
Contact details	14
Telephones	14
Office hours	14
Address	14

---

# SPECIFICATIONS

---

## Basic Information

---

**Category:** Center Cockpit

**Sub Category:** Sloop

**Model Year:** 1985

**Year Built:** 1985

## Dimensions

---

**LOA:** 45' (13.72mm)

**LWL:** 35' 6" (10.82mm)

**Beam:** 13.16

**Max Draft:** 5' 5" (1.65mm)

## Speed, Capacities and Weight

---

**Water Capacity:** 140 Gallons

**Holding Tank:** 20 Gal Gallons

**Fuel Capacity:** 40 Gal Gallons

## Accommodations

---

**Total Cabins:** 2

**Total Berths:** 4

**Sleeps:** 8

**Total Heads:** 2

## Hull and Deck Information

---

**Hull Material:** Fiberglass

**Deck Material:** Fiberglass

## Engine Information

---

**Engines:** 1

**Manufacturer:** Perkins Diesel

**Engine Type:** Inboard

**Fuel Type:** Diesel

# PHOTOS

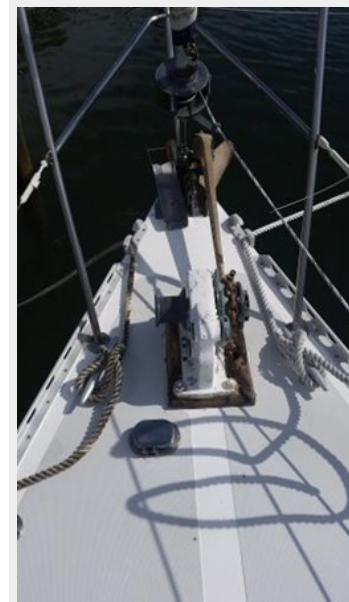
**Port Bow**



**Port Stern**



**Simpson Lawrence Manual Windlass**



**Fordeck Aft**



**Cockpit Aft**



**Aft Deck**





**Life Raft / Cockpit Forward**



**Stern / Boarding Ladder**



**Lewmar Halyard Winch**



**Lewmar 52 ST Winches**



**Repainted Mast**



**Simrad 6000 Auto-Pilot**



**Furuno GP70 GPS**



**Standard Horizon VHF (Nav Station)**



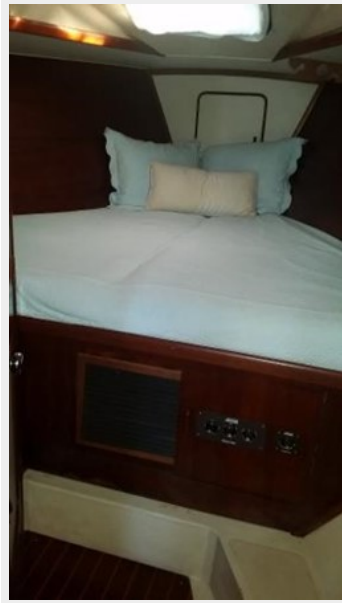
**Fr. Stateroom passageway**



**AM/FM/CD Player**



### Forward Stateroom Berth



### Forward Stateroom Storage



### Forward Head



### MarineAir Reverse Cycle A/C Control





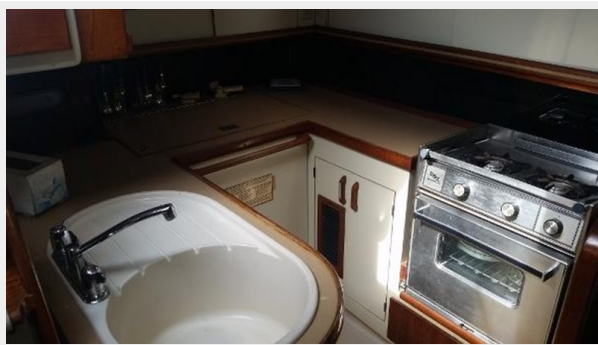
**AC/DC Control Panel**



**Counter below Companionway**



**Galley**



**Adler Barbour Ref/Freezer 1**



**CGI Gas Stove / Oven**



**Adler Barbour Ref/Freezer 2**



**Salon**



**Port Salon Settee**



**Starboard Settee**



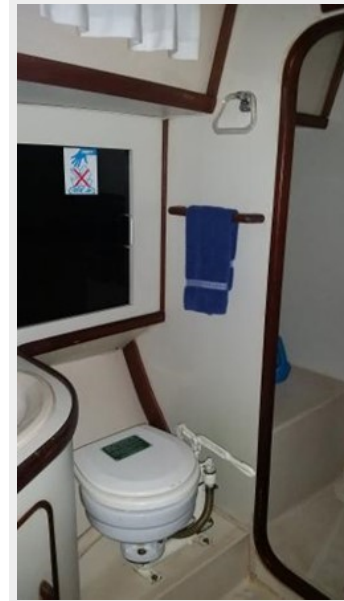
**Nav Station**



**Aft Master Stateroom**



**Aft Stateroom Head w/Shower Stall**



**Universal 6.5KW Genset (306 hrs.)**



**Perkins 4-108 Diesel - 50HP (1300 hrs.)**





**Battery Charger**



**HW Heater**



**Chain Locker**



**Dodger Isenglass (stowed)**



### Avon 10' Inflatable Dingy (stowed)



### Hirsh 45 Line Drawing



### Hirsh 45 CC Sloop - 'Shrimp-Mates'





---

# CONTACTS

---

Andrey Shestakov, leading yacht broker of the sales department of Shestakov Yacht Sales Inc. Shestakov Yacht Sales Inc., the official representative of the Miami/Fort Lauderdale FL headquarters.

---

## Contact details

---

Email: [andrey@shestakovyachtsales.com](mailto:andrey@shestakovyachtsales.com)

Web: [shestakovyachtsales.com/en/](http://shestakovyachtsales.com/en/)

---

## Telephones

---

USA: +1(954)274-4435

---

## Office hours

---

Monday – Saturday: **9:00 - 21:00** EDT

Sunday: **closed**

---

## Address

---



Harbour Towne Marina, 850 NE 3rd St,  
STE 213, Dania, FL 33004