

BLUEJACKET — ALDEN YACHTS



Builder: ALDEN YACHTS

Year Built: 1986

Model: Cruising Sailboat

Price: PRICE ON APPLICATION

Location: United States

LOA: 54' 1" (16.48m)

Beam: 14' 4" (4.37m)

Min Draft: 5' 6" (1.68m)

Cruise Speed: 7 Kts. (8 MPH)

Max Speed: 8 Kts. (9 MPH)

Our experienced yacht broker, Andrey Shestakov, will help you choose and buy a yacht that best suits your needs **BLUEJACKET — ALDEN YACHTS** from our catalogue. Presently, at Shestakov Yacht Sales Inc., we have a wide variety of yachts available on our sale's list. We also work in close contact with all the big yacht manufacturers from all over the world.

If you would like to buy a yacht **BLUEJACKET — ALDEN YACHTS** or would like help answering any questions concerning purchasing, selling or chartering a yacht, please call **+1(954)274-4435**

TABLE OF CONTENTS

TABLE OF CONTENTS	2
SPECIFICATIONS	5
Overview	5
Basic Information	5
Dimensions	5
Speed, Capacities and Weight	6
Accommodations	6
Hull and Deck Information	6
Engine Information	6
DETAILED INFORMATION	7
INTRODUCTION	7
ACCOMMODATIONS	7
ELECTRICAL SYSTEM	8
ELECTRONICS and NAVIGATION EQUIPMENT	8
MECHANICAL EQUIPMENT and ENGINE DETAILS	8
HULL AND DECK CONSTRUCTION	9
SAILS, MAST and RIGGING	10
ADDITIONAL	10
EXCLUSIONS	11
Exclusions	11
Disclaimer	11
PHOTOS	12
Under Sail	12
Sailing	12
Main Salon	12
Main Salon Port Side	12
Main Salon Settee	13
Table with Flip-up Cutting Board	13

Main Salon Stbd. Side	13
Main Salon Bar Open	13
Master Stateroom	13
Master Berth Storage	13
Master Stateroom Stbd. Side	14
Cabin Sole Detail	14
Master Head and Stall Shower	14
Aft Port Stateroom	14
Guest Head	15
Aft Stbd. Stateroom	15
Electrical Panel	15
Nav Station	15
Wet Locker	16
Galley	16
Bow	16
Deck Detail	16
Deck Aft	17
Dodger	17
Sailing Instruments	17
Electric Reversing Main Sheet/Halyard	17
Cockpit Table	17
GPS	17
Winch Buttons	18
Engine	18
Stern	18
Clean Bilges	18
On Mooring	18
On Mooring	18
Underbody	19

New Fairclough Cover (4/2016)	19
CONTACTS	20
Contact details	20
Telephones	20
Office hours	20
Address	20

SPECIFICATIONS

Overview

BLUEJACKET is a very handsome sailing vessel -- whether under sail or at anchor, she is an eye catcher. While offering shoal draft, she is truly an offshore sailing vessel. Her centerboard configuration offers minimum draft of 5'-6" with board up and maximum draft of 10'-4" with board down. Unlike her sisterships, she is equipped with a custom spar for greater performance. With her three power winches, including a main sheet winch that both trims and eases with the touch of a button, and all lines and controls within reach of the helmsman, BLUEJACKET can be sailed shorthanded. The perfect boat for a Bermuda Race, a cruise to Maine or a winter in the Caribbean, she can do it all while looking good and performing well.

BLUEJACKET's condition will not disappoint even the most discriminating of yachtsmen. She has always been updated and maintained professionally, and it shows that her owners have cared for her with love and pride.

As her current owners make their transition to power, BLUEJACKET represents an incredible opportunity for those looking for a proven and respected bluewater boat that is ready to sail.

Basic Information

Category: Cruising Sailboat

Sub Category: Aft Cockpit

Model Year: 1986

Year Built: 1986

Country: United States

Coast Guard #: 907984

Vessel Top: Dodger

Dimensions

LOA: 54' 1" (16.48m)

LWL: 40' 0" (12.19m)

Beam: 14' 4" (4.37m)

Min Draft: 5' 6" (1.68m)

Speed, Capacities and Weight

Cruise Speed: 7 Kts. (8 MPH)

Cruise Speed RPM: 2000 Kts.

Max Speed: 8 Kts. (9 MPH)

Max Speed RPM: 2800 Kts.

Displacement: 40000 Pounds

Water Capacity: 300 Gallons

Fuel Capacity: 180 Gallons

Accommodations

Total Cabins: 3

Total Berths: 3

Sleeps: 6

Total Heads: 2

Hull and Deck Information

Hull Material: Fiberglass

Deck Material: Teak

Hull Configuration: Centerboard

Hull Color: Flag Blue

Hull Designer: John G. Alden

Engine Information

Engines: 1

Manufacturer: Westerbeke

Model: W-70

Engine Type: Inboard

Fuel Type: Diesel

DETAILED INFORMATION

INTRODUCTION

BLUEJACKET is a very handsome sailing vessel -- whether under sail or at anchor, she is an eye catcher. While offering shoal draft, she is truly an offshore sailing vessel. Her centerboard configuration offers minimum draft of 5'-6" with board up and maximum draft of 10'-4" with board down. Unlike her sisterships, she is equipped with a custom spar for greater performance. With her three power winches, including a main sheet winch that both trims and eases with the touch of a button, and all lines and controls within reach of the helmsman, BLUEJACKET can be sailed shorthanded. The perfect boat for a Bermuda Race, a cruise to Maine or a winter in the Caribbean, she can do it all while looking good and performing well.

BLUEJACKET's condition will not disappoint even the most discriminating of yachtsmen. She has always been updated and maintained professionally, and it shows that her owners have cared for her with love and pride.

As her current owners make their transition to power, BLUEJACKET represents an incredible opportunity for those looking for a proven and respected bluewater boat that is ready to sail

ACCOMMODATIONS

BLUEJACKET sleeps six comfortably in three private cabins. From the bow aft there is a chain locker, followed by a large sail handling compartment with a ladder to the deck, via a large aft-opening hatch. Next is a fully-enclosed owner's head with a separate stall shower. The owner's cabin has a double berth (Tempur-Pedic mattress, new 2010) to port, with storage lockers outboard and drawers underneath. To starboard is a hanging locker, settee, and vanity with shelves, and a locker with bookshelves.

Next aft is the main saloon with U-shaped dinette to port, lockers and bookshelves above, and with a drop-leaf table on centerline with removable fiddles and storage below. To starboard is an aft-facing navigation station. Just forward of the nav station is the entertainment center with TV, stereo (Fusion 700 with CD/DVD/Radio/iPod)(new, 2013), and a large custom bar. Aft of the nav station is a head with shower and wet locker. Main cabin cushion covers (2012).

To port and just aft of the settee and dinette is the very large and functional galley. It is U-shaped and features double stainless steel sinks on centerline with hot and cold pressure water, antique brass fixtures and a fresh-water hand pump. The galley countertops are tan tile. Outboard is a gimballed, three-burner Force 10 stainless steel propane stove with oven, and a Grunert refrigerator/freezer with top- and side-access and temperature gauges. Above the sink is an overhead console for dish storage.

The aft portion of the accommodations is split on the centerline into two cabins, each with double

berths, hanging lockers and bureaus.

The interior joinery is satin-varnished teak with gloss trim. All cushions are Slate Blue Ultrasuede, and have navy blue protective canvas covers. Berth cushions are high-density foam. The galley surfaces are white Formica with teak trim.

ELECTRICAL SYSTEM

- 12-volt DC and 110-volt AC systems
- Westerbeke 8 kW diesel generator (approx. 5,600 hrs)
- (2) Alternators
- (3) 4D Gelcel house batteries (new 6/2016)
- House battery engine alternator (2012)
- Freedom 3000 watt inverter/charger (2014)
- (2) Xentac amp-hour meters (2014)
- 4-D Gelcel electronics battery (2014)
- (2) Four-way battery selector switches
- Amp meter
- 54', 50 amp shore power cord with adapters

ELECTRONICS and NAVIGATION EQUIPMENT

- Raymarine E125 hybrid touchscreen GPS, chartplotter, HD digital radar with repeater at nav station (2013)
- Autohelm 6000 autopilot (connected to Raymarine system)
- Raymarine Smartpilot at cockpit and nav station (2013)
- Icom M700 SSB
- Standard Horizon VHF with remote in cockpit (2013)
- Raymarine i50 speed (2013)
- Raymarine i50 depth (2013)
- Raymarine i60 wind (2013)

MECHANICAL EQUIPMENT and ENGINE DETAILS

- Engine is located in the galley underneath the cabinetry and accessed through opening panels
- Westerbeke W-70 diesel engine (approx. 5,300 hrs.)
- Main engine head gasket (new 2018)
- Injectors adjusted (2014)
- Engine cockpit panel (2015)
- Valve cover gasket and fresh water cooling gasket (2015)

- Hurth reverse and reduction gear
- Three-blade Maxprop
- Spurs line cutter
- Dripless stuffing box
- Maxwell Nilsson 12-volt windlass with foot button on deck
- Espar diesel forced-air heating system
- Wired and plumbed for future installation of air conditioning, with separate sea cock and strainer installed
- Plumbed and wired for water maker
- New sanitary hoses, macerator pump and (2) holding tanks (2011)
- (6) 12-volt cabin fans
- Automatic Halon extinguisher system for engine room
- (2) Electric bilge pumps (2015)
- (2) Manual bilge pumps
- Domestic water pumps (2015)
- Holding tank alarm (2011)
- Holding tank macerator discharge pump system (2011)

HULL AND DECK CONSTRUCTION

- Hull and deck made of vacuum-bagged, balsa-cored fiberglass sandwich
- Flag Blue Awlgrip topsides (2013 – Hinckley Yacht Services)
- Teak deck laid in epoxy in excellent condition (new fastenings, bungs, sanding and all new seam caulking, 2011)
- External lead keel with stainless steel keel bolts cast in place
- Airfoil shaped, positive-buoyancy centerboard hydraulically controlled from helmsman's station with manual backup
- Centerboard position indicator system over companionway
- Centerboard configuration offers minimum draft of 5'-6" with board up and maximum draft of 10'-4" with board down
- Large rudder post and machinery spaces accessed below hinged helmsman's seat
- Under-deck storage aft of helmsman's seat via a large deck hatch
- Molded fiberglass bin on the port transom for stern anchor rode stowage with a covered hawse pipe to the deck above
- Fresh water washdown system
- Salt water anchor washdown system
- Teak toerail
- 3/8" Lexan storm covers for all large portlights
- All large and medium hatches are double-opening
- (8) Deck hatches and (6) dorade vents for ample natural ventilation
- (12) Opening portlights

SAILS, MAST and RIGGING

Mast & Rigging:

- Metal mast custom-painted spar (replaced original Stoway rig)
- Doyle StackPack mainsail handling system (2013)
- Navtec hydraulic controls for centerboard, vang, and backstay adjustments
- Navtec rod standing rigging
- Hood Seafurl roller furling headstay system
- Antal track and cars for fully-battened main
- Spinnaker pole stowed on deck in chocks
- Reaching strut, spinnaker gear
- Storm trysail track on mast

Sails:

- Halsey Evolution fully-battened main (2010)
- Halsey Evolution genoa (2010)
- Halsey Evolution gennaker (2010)
- Shore Dacron 130% headsail
- Shore Mylar 150% headsail
- Shore Dacron 90% blade
- Hood Dacron 100% high cut yankee
- Hood Dacron overlap staysail with one reef
- Hood Dacron staysail
- Hood nylon 1 ½ oz tri-radial spinnaker
- Shore nylon ¾ oz tri-radial spinnaker
- Hood storm trysail
- Hood storm staysail

Winches:

- (2) Barient #36 electric three speed self-tailing primary winches
- (1) Harken Re-wind #46 electric reversing winch for main halyard and main sheet
- (2) Barient #32 self-tailing secondary winches
- (4) Barient self-tailing halyard winches on mast

ADDITIONAL

- Fairclough winter cover (2015)
- 66 lb. Bruce stainless steel anchor with 300', 5/8" chain stored in forward locker
- 35 lb. High-tensile Danforth anchor with 200' nylon rode and 300' additional rode
- Givens 8-man life raft
- (12) Life preservers

- (2) Horseshoe buoys with strobe lights
- Boat hook
- (5) Fenders with covers
- Double lifelines with (2) opening gates
- Spare parts kit for engine
- Screens for all hatches and companionway
- Folding cockpit table
- Flat screen TV
- Cockpit dodger (2014)
- Bimini (2013)
- Cockpit awning
- Chelsea clock and barometer in main salon
- Clock and inclinometer on overhead console for helmsman
- Fitted cockpit cushions
- Barbeque grill
- (2) 20 lb. Propane tanks in custom wells, port and starboard
- Boarding ladder
- Man overboard pole
- Linens, towels, sheets
- (2) Folding deck chairs
- Radar reflector

EXCLUSIONS

The owner's personal effects are excluded from the sale.

Exclusions

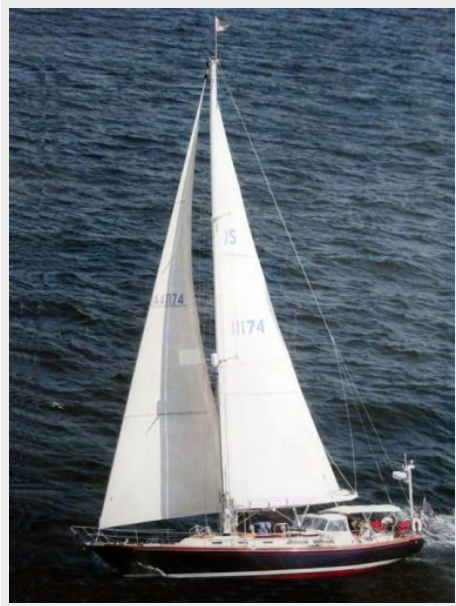
Owner's personal belongings.

Disclaimer

The Company offers the details of this vessel or yacht in good faith but cannot guarantee or warrant the accuracy of this information nor warrant the condition of the vessel. A buyer should instruct his representatives, agents, or his surveyors, to investigate such details as the buyer desires validated. This vessel or yacht is offered subject to prior sale, price change, or withdrawal without notice.

PHOTOS

Under Sail



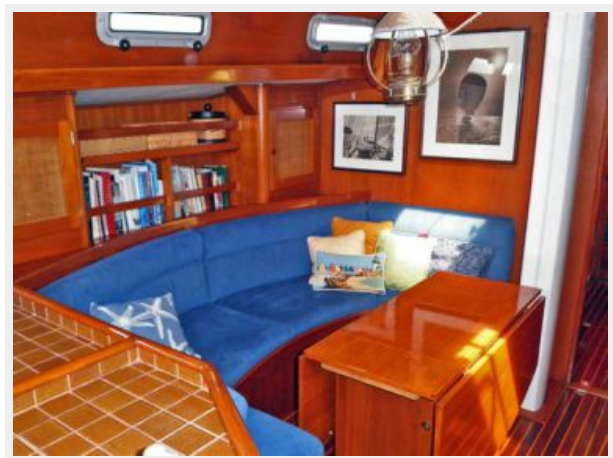
Sailing



Main Salon



Main Salon Port Side



Main Salon Settee



Table with Flip-up Cutting Board



Main Salon Stbd. Side



Main Salon Bar Open



Master Stateroom



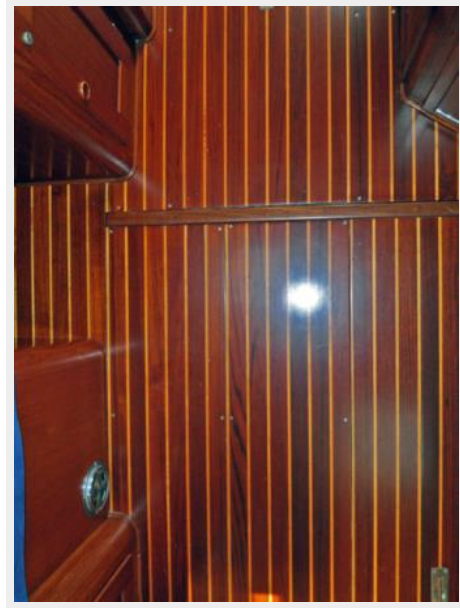
Master Berth Storage



Master Stateroom Stbd. Side



Cabin Sole Detail



Master Head and Stall Shower



Aft Port Stateroom



Aft Stbd. Stateroom



Guest Head



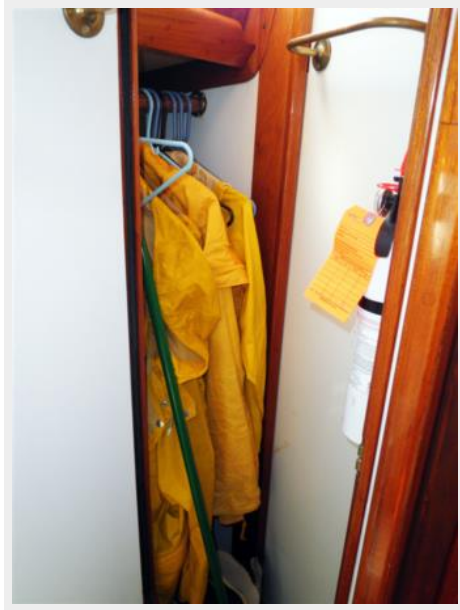
Electrical Panel



Nav Station



Wet Locker



Galley



Bow



Deck Detail



Deck Aft



Dodger



Sailing Instruments



Electric Reversing Main Sheet/Halyard



Cockpit Table



GPS



Winch Buttons



Engine



Stern



Clean Bilges



On Mooring



On Mooring



Underbody



New Fairclough Cover (4/2016)



CONTACTS

Andrey Shestakov, leading yacht broker of the sales department of Shestakov Yacht Sales Inc. Shestakov Yacht Sales Inc., the official representative of the Miami/Fort Lauderdale FL headquarters.

Contact details

Email: andrey@shestakovyachtsales.com

Web: shestakovyachtsales.com/en/

Telephones

USA: +1(954)274-4435

Office hours

Monday – Saturday: **9:00 - 21:00** EDT

Sunday: **closed**

Address



Harbour Towne Marina, 850 NE 3rd St,
STE 213, Dania, FL 33004