

BG — FEADSHIP



Builder: FEADSHIP

Year Built: 1990

Model: Motor Yacht

Price: PRICE ON APPLICATION

Location: Bahamas

LOA: 153' 11" (46.91m)

Beam: 28' 11" (8.81m)

Max Draft: 9' 6" (2.90m)

Cruise Speed: 12 Kts. (14 MPH)

Max Speed: 15 Kts. (17 MPH)

Our experienced yacht broker, Andrey Shestakov, will help you choose and buy a yacht that best suits your needs **BG — FEADSHIP** from our catalogue. Presently, at Shestakov Yacht Sales Inc., we have a wide variety of yachts available on our sale's list. We also work in close contact with all the big yacht manufacturers from all over the world.

If you would like to buy a yacht **BG — FEADSHIP** or would like help answering any questions concerning purchasing, selling or chartering a yacht, please call **+1(954)274-4435**

TABLE OF CONTENTS

TABLE OF CONTENTS	2
SPECIFICATIONS	4
Overview	4
Basic Information	4
Dimensions	4
Speed, Capacities and Weight	5
Accommodations	5
Hull and Deck Information	5
Engine Information	5
DETAILED INFORMATION	6
BG	6
Exclusions	7
Disclaimer	7
PHOTOS	8
AERIAL	8
MAIN SALON	8
MAIN SALON	8
DINING ROOM	8
SKY LOUNGE	8
SKY LOUNGE	8
BRIDGE DECK AFT DINING	9
MASTER STATEROOM	9
MASTER BATHROOM	9
MASTER STATEROOM	9
VIP STATEROOM ENSUITE	10
VIP STATEROOM	10
GUEST STATEROOM	10
GUEST STATEROOM (CONVERTABLE)	10

SUN DECK	10
AERIAL	10
CONTACTS	11
Contact details	11
Telephones	11
Office hours	11
Address	11

SPECIFICATIONS

Overview

Classic Feadship with Brand New Ultra Contemporary Modern interior. BG boasts 6 luxurious staterooms, 2 on the main deck.

Key Features:

- First Time For Sale
- Complete Major Refit
- Spectacular Layout
- Cat Engines
- New Quantum 1500 Zero Speed Stabilizers
- Stylish Jacuzzi with Large Sun Pad
- Main deck Master Suite
- Bonus: VIP Suite on Main Deck

Not for sale or charter to US residents in US waters

Basic Information

Category: Motor Yacht

Model Year: 1990

Year Built: 1990

Refit Year: 2015

Country: Bahamas

Dimensions

LOA: 153' 11" (46.91m)

Beam: 28' 11" (8.81m)

Max Draft: 9' 6" (2.90m)

Speed, Capacities and Weight

Cruise Speed: 12 Kts. (14 MPH)

Cruise Speed Range: 5000

Max Speed: 15 Kts. (17 MPH)

Max Speed Range: 3000 Kts.

Gross Tonnage: 515 Pounds

Water Capacity: 5070 Gallons

Fuel Capacity: 18500 Gallons

Accommodations

Total Cabins: 6

Sleeps: 12

Total Heads: 6

Captain Cabin: True

Crew Cabin: 5

Crew Sleeps: 10

Hull and Deck Information

Hull Material: Steel

Deck Material: Teak

Hull Designer: De Voogt Naval Architects

Exterior Designer: De Voogt Naval Architects

Interior Designer: Dee Dee Eustace

Engine Information

Manufacturer: Caterpillar

Model: 3508 DI-TA

Fuel Type: Diesel

DETAILED INFORMATION

BG

BG is a pedigree motor yacht built by the renowned De Vries yard at Feadship. Thanks to an impressive refit completed in 2015, BG boasts a stunning new “Hampton Beach House” interior designed by Dee Dee Eustace of Taylor Hannah Architects. This turn-key yacht is ready for immediate cruising and offers accommodation for up to 12 guests in six finely appointed staterooms. The main salon has a long, ultra-comfortable seating area. The dining room features a stunning patina and rosewood table and spectacular custom wine wardrobe (120 bottles). The full beam, on deck Master Suite offers guests a sleek, modern oasis to relax and unwind with a king bed, comfortable seating area settee with chaise and generous ensuite with central bathtub and separate 2 person shower. In addition, the VIP Suite is located on the main deck with a king bed and ensuite bathroom. Below aft are four additional guest staterooms with oversize windows. There are 2 elegant staterooms with queen beds and ensuite bathrooms. There are 2 twin staterooms (which are convertible to king beds) with ensuite bathrooms. The attention to detail in each guest stateroom in the refit offers guests comfort and luxury. The Skylounge offers guests the perfect space to enjoy a cocktail, watch a movie, or just enjoy cruising the worlds oceans. There is a phenomenal exterior dining and entertaining area with projector screen on bridge deck aft. A stylish jacuzzi area on the sundeck has a step up to a large sun pad area forward for unobstructed ocean views. Zero speed stabilizers provide comfort when at anchor or underway. **Key Features:** • Exquisite Brand New Ultra Modern contemporary interior portrays sophistication and timelessness with elegant furnishings complemented by designer fabrics, finishes and fixtures • Guest accommodation for 12 guests in 6 luxurious cabins • Spacious full beam master with seating area, ample walk in closets and en suite with central tub, two person shower and private toilet & bidet room • Spectacular main deck VIP with shower room en suite • Main salon has long ultra-comfortable seating area and 190.5cm/75in swivel TV • Dining salon with patina and rosewood table features a spectacular custom wine wardrobe (120 bottles) • Stylish jacuzzi area aft with step up to large sun pad area forward for unobstructed ocean views • Phenomenal exterior dining and entertaining area with projector screen on bridge deck aft • First Time for Sale • Spectacular Layout • Cat Engines • Zero speed stabilizers at anchor

- **Guest Accommodation:** Accommodations for 12 in 6 cabins

BG is capable of sleeping up to 10 crew onboard to ensure a relaxed luxury yacht experience.

- **Audio Visual Equipment and Deck Facilities:** Comprehensive audio-visual systems DirectTV, Apple TV, Airplay KVH IP Mobile Cast (movies) iPad & iPod docking stations Xbox One Sky Lounge and Main Salon TV's: Samsung 75in/190.5cm flat screen Master Cabin TV's: Samsung 47in/119.4cm flat screen VIP Cabin TV's: Samsung 40in/101.6cm flat screen Guest Cabins TV's: Samsung 50in/127cm flat screen
-

-
- **Communications:** Satcom & cellular communications facilities VSAT with VOIP Wi-Fi internet access
- **Mechanical:** Engines: 2x Caterpillar 3508 (Hours Port: 25,738 / Stbd: 25,764 as of 2/20/16)
- Generators: 2x 99k Caterpillar 3304 (Hours Port: 62,448 / Stbd: 64062 as of 2/20/16)
- Bowthruster: 1x 75hp
- Stabilizers: Quantum 1500 zero speed
- Fuel Capacity: 18,500 Us Gallons (70,000 liters)
- Water Capacity: 5,070 Us Gallons
-
- **Tenders:** 12.1m Intrepid
- 6.4m Novurania
-

Exclusions

Owner's personal belongings.

Disclaimer

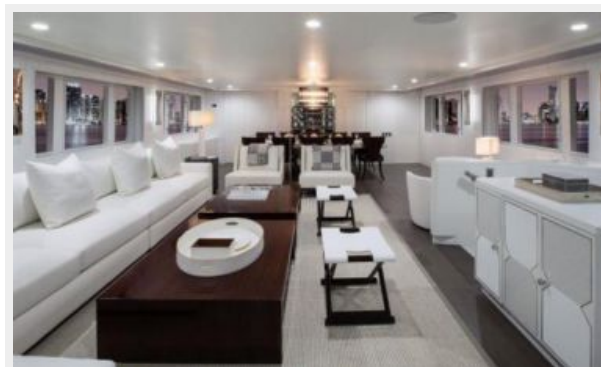
The Company offers the details of this vessel or yacht in good faith but cannot guarantee or warrant the accuracy of this information nor warrant the condition of the vessel. A buyer should instruct his representatives, agents, or his surveyors, to investigate such details as the buyer desires validated. This vessel or yacht is offered subject to prior sale, price change, or withdrawal without notice.

PHOTOS

AERIAL



MAIN SALON



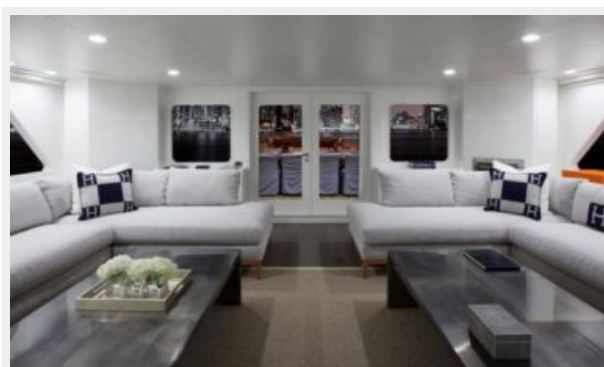
MAIN SALON



DINING ROOM



SKY LOUNGE



SKY LOUNGE



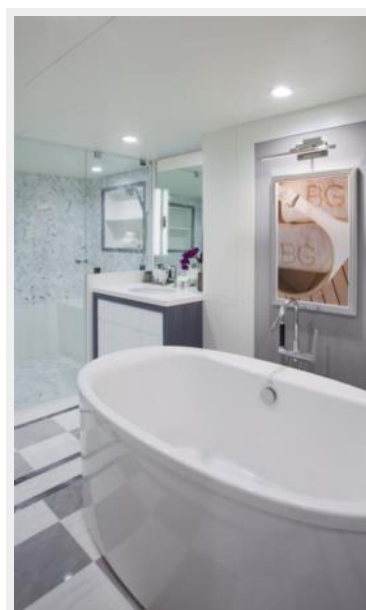
BRIDGE DECK AFT DINING



MASTER STATEROOM



MASTER BATHROOM



MASTER STATEROOM



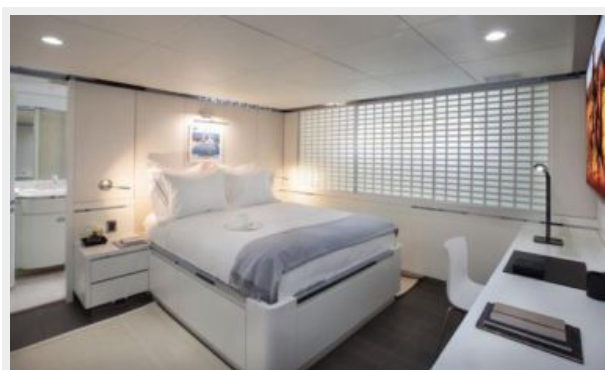
VIP STATEROOM



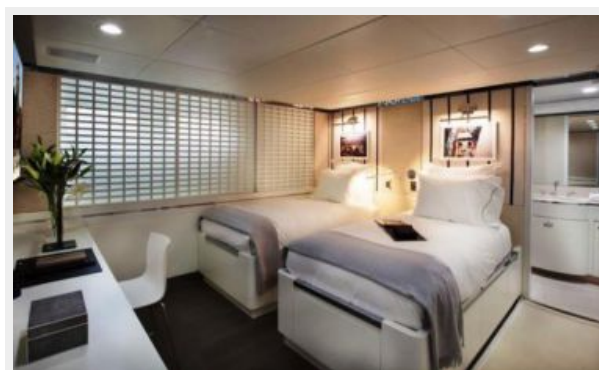
VIP STATEROOM ENSUITE



GUEST STATEROOM



GUEST STATEROOM (CONVERTABLE)



SUN DECK



AERIAL



CONTACTS

Andrey Shestakov, leading yacht broker of the sales department of Shestakov Yacht Sales Inc. Shestakov Yacht Sales Inc., the official representative of the Miami/Fort Lauderdale FL headquarters.

Contact details

Email:
andrey@shestakovyachtsales.com

Web: shestakovyachtsales.com/en/

Telephones

USA: **+1(954)274-4435**

Office hours

Monday – Saturday: **9:00 - 21:00 EDT**

Sunday: **closed**

Address



Harbour Towne Marina, 850 NE 3rd St,
STE 213, Dania, FL 33004