

## PENNY LANE — FLEMING YACHTS



**Builder:** FLEMING YACHTS

**Year Built:** 2009

**Model:** Motor Yacht

**Price:** PRICE ON APPLICATION

**Location:** United States

**LOA:** 65' 0" (19.81m)

**Beam:** 18' 8" (5.69m)

**Max Draft:** 5' 0" (1.52m)

**Cruise Speed:** 18 Kts. (21 MPH)

**Max Speed:** 22 Kts. (25 MPH)

Our experienced yacht broker, Andrey Shestakov, will help you choose and buy a yacht that best suits your needs **PENNY LANE — FLEMING YACHTS** from our catalogue. Presently, at Shestakov Yacht Sales Inc., we have a wide variety of yachts available on our sale's list. We also work in close contact with all the big yacht manufacturers from all over the world.

If you would like to buy a yacht **PENNY LANE — FLEMING YACHTS** or would like help answering any questions concerning purchasing, selling or chartering a yacht, please call **+1(954)274-4435**

# TABLE OF CONTENTS

TABLE OF CONTENTS	2
SPECIFICATIONS	6
Overview	6
Basic Information	6
Dimensions	6
Speed, Capacities and Weight	7
Accommodations	7
Hull and Deck Information	7
Engine Information	7
DETAILED INFORMATION	8
Accommodations	8
Salon	8
Galley	9
Master Stateroom	9
Port Stateroom	9
Starboard Stateroom	10
Electrical	10
Electronics & Navigation	10
Internet	11
Audio & Video Equipment	11
Engine & Mechanical	12
Deck & Hull	12
Tender	13
Pilothouse	13
Flybridge	13
Cockpit	14
Remarks	14
Exclusions	14

Exclusions	14
Disclaimer	15
PHOTOS	16
Pilothouse	16
Pilothouse Seating & Table	16
Stairs to Pilothouse	16
Salon Looking Aft	16
Salon Aft Starboard	16
Pop-Up TV	16
Salon Hi-Low Table	17
Salon Port Aft - Wine Chiller	17
Galley	17
Galley	17
Galley Appliances	17
Refrigerator/Freezer	17
Companionway to Accommodations	18
Master Stateroom Forward	18
Pop-Up Vanity w/Mirror & Light	18
Master Stateroom	18
Master Head	19
Master Head Granite Counter Tops	19
Master Head Shower	19
VIP Stateroom	19
VIP Head Compartment	20
VIP Head	20
VIP Shower	20
Third Stateroom	20
Third Stateroom	21
Engine Room	21

---

Engine Room	21
Engine Room	21
Engine Room	21
Engine Room	21
Engine Room	22
Bow Pulpit	22
Double Gypsy Windlass	22
Flybridge	22
Flybridge	22
Flybridge Helm	22
Flybridge Enclosures	23
Flybridge Looking Aft	23
RIB Center Console	23
Tender	23
Bridge Deck Docking Station	24
Miele Double Electric Grill	24
Miele Double Electric Grill	24
Aft Deck & Hard Top	24
Cockpit Controls	25
Hard Top	25
Covered Side Decks	25
Cockpit	25
Illuminated Name Boards	26
Penny Lane	26
Penny Lane	26
Penny Lane	26
Salon Layout	26
Penny Lane	26
Accommodations Layout	27

---

---

CONTACTS	28
-----	-----
Contact details	28
-----	-----
Telephones	28
-----	-----
Office hours	28
-----	-----
Address	28
-----	-----

---

# SPECIFICATIONS

---

## Overview

---

A spectacular example of the Fleming 65 Pilothouse Motoryacht has arrived on Lake union, direct from her Alaska cruising adventure. Fully serviced, varnished and pretty as a picture, PENNY LANE is a 2009 delivery and is hull number 20 of the award winning Fleming yachts. In addition to Fleming Yachts fully redundant and precisely engineered systems, PENNY LANE is fitted with the upgraded 1100 hp MAN's, Fleming hardtop with full slide-opening enclosure, twin 21.5 Onan generators, thrusters, stabilizers, and full Furuno electronics suites at flybridge and pilothouse helm. Additional toys include custom aft deck table for cycle stowage, plus the ships tender aptly named RUBBER SOUL.

Chef's galley, audiophile sound system, and three staterooms where each guest cabin is designed to accommodate three persons. PENNY LANE shows tremendous pride of ownership. Fully serviced and ready for new owners extended cruising enjoyment, this yacht is priced to sell and easy to see at South Lake union.

## Basic Information

---

**Category:** Motor Yacht

**Sub Category:** Pilothouse

**Model Year:** 2009

**Year Built:** 2009

**Country:** United States

**Vessel Top:** Hardtop

**Fly Bridge:** Yes

**Cockpit:** Yes

## Dimensions

---

**LOA:** 65' 0" (19.81m)

**LWL:** 59' 2" (18.03m)

**Beam:** 18' 8" (5.69m)

**Max Draft:** 5' 0" (1.52m)

---

## Speed, Capacities and Weight

---

**Cruise Speed:** 18 Kts. (21 MPH)

**Max Speed:** 22 Kts. (25 MPH)

**Displacement:** 108177 Pounds

**Water Capacity:** 400 Gallons

**Holding Tank:** 300 Gallons

**Fuel Capacity:** 1800 Gallons

---

## Accommodations

---

**Total Cabins:** 3

**Total Heads:** 2

---

## Hull and Deck Information

---

**Hull Material:** Fiberglass

**Hull Configuration:** Semi-Displacement

**Hull Designer:** Fleming Yachts

---

## Engine Information

---

**Engines:** 2

**Manufacturer:** MAN

**Model:** V-10 Common Rail

**Fuel Type:** Diesel

---

# DETAILED INFORMATION

---

## Accommodations

---

Safe and simple dock access is provided by the level-entry swim step and the two dock-height side gates. The lovely teak aft deck table, which includes clever bike stowage, allows for a full 10 person al fresco dining table with easy mobility throughout this space.

Stepping through the sliding doors into the main salon you find a vast salon with open plan galley with granite countertops and all the luxury appliances the chef will require! The main salon includes bar, custom frosted glass cabinetry, and a wine chiller aft to port. To starboard is the large pop-up TV system which silently disappears when not in use. The two large settees are designed for simple and comfortable living.

The three staterooms are below - master suite with gracious ensuite, separate vanity, two full sized closets and drawers space. The VIP is a second queen berth offset with a pullout large bunk above. This stateroom has a work station with book shelves and additional cabinetry on the inboard and forward bulkheads, plus the massive hanging locker. The third stateroom can accommodate three persons for a total sleeping capacity below of 8. The pilothouse can accommodate another two as desired.

The pilothouse has a spectacular set up for the on-board office. This is completely separate from the pilothouse table and navigation/helm station of the yacht allowing for the remote work station that is both functional and easy-living for all aboard. There are port and starboard doors for easy deck access.

The flybridge boasts the full Fleming Yachts hardtop with opening ports and recessed lighting. There are eisenglass surrounds which enclose this space for all year round enjoyment. The fridge, deluxe barbeque and full granite servicing counter makes for a beautiful setting for any meal underway or at anchor.

With her recent varnish (Nov 2015) and full servicing, PENNY LANE is ready to go cruising this winter—priced for a quick sale, you will not be disappointed!

---

## Salon

---

- Salon settee port side extends forward to an end-table cabinet and L-settee
- Salon settee starboard side
- Teak fold-out table for hi-lo dining & coffee
- Interior lighting all in stainless steel finish
- Custom sconce lights in black matte metal
- Ultra leather headliner throughout
- Salon TV cabinet with Sony 32" LCD on silent lift



- Custom valances on all ports & windows
- Fleming teak blinds in "no-noise" tracks
- U-Line wine cooler with teak trim aft of port settee
- Teak ottomans with matching ultraleather, storage inside (2)

## Galley

---

- Verde Bahia granite counter top
- Double sinks in black with large basins with Grohe single lever full head control
- Instant hot water dispenser
- Waste disposal
- Sharp Carousel convection microwave in black
- Bosch induction flush cooktop with custom potholders
- VHF mic & speaker at galley sink
- Miele oven
- Miele dishwasher with teak front
- 23 cu. ft. refrigerator
- Slide-out storage compartment
- Dish locker opens top and front and small pantry
- Locker at end of galley counter
- Hallway: Teak & holly throughout with inviting ultraleather and teak wainscoting. Bosch Axxis programmable washer/Bosch Axxis dryer; laundry locker above large pull-out laundry hamper

## Master Stateroom

---

- Luxurious suite dressed in teak with touches of bright, easy-care ultraleather for contrast
- Extensive cabinetry drawers & large hanging lockers plus the spacious ensuite head
- OceanAire screen & black-out blinds at overhead recessed hatch
- Pop-up vanity with mirror and light
- Ottoman stool for vanity
- Port hanging locker
- Bed has hydraulic lift feature for liner stowage below
- Master Head features granite counter & shower floor with Kohler sink and two full sized over-counter medicine/storage with mirrored finish. Head Hunter head; heated towel rack; adjustable shower fittings.

## Port Stateroom

---

- Queen berth
- Upper outboard berth slides out

- Reading lights (3)
- Opening ports (2)
- Recessed reading lights at workstation desk & forward counter
- (12) Drawers, (4) below-counter cabinets, large lighted hanging locker
- Book cases & cabinetry above

---

## Starboard Stateroom

---

The third stateroom is to starboard with one athwartship berth and one upper berth aligned fore and aft. A third canvas pull-out berth is cleverly hidden away for accommodating a third in this stateroom. Bookcase, lighted mirror with 4 drawers; hanging locker. Below bunk are 2 drawers.

VIP Head: Head hunter head; heated towel racks; two large mirrored lockers for toiletries. Below counter storage; Kohler basin (white) set in Verde Bahia granite for beautiful contrast. Grohe adjustable shower fitting; seat in shower with outboard stowage for shower goodies.

---

## Electrical

---

- 2 x 21.5Kw Onan generator for fully redundant ships operation
- Computank digital tank tender

---

## Electronics & Navigation

---

- KVH Tracvision TV-7 Dome with Direct TV box (subscription service)
- Furuno Navnet radar 3-D MFDBB with 6' antenna, NEC display C-Map
- Furuno Navnet radar repeater (bridge) 3-D MFD12, BBW GPS
- Furuno Navnet radar slave (bridge) 3-D DCU12 display
- Furuno Navnet (pilothouse) 3-D MFD12, DFFI sounder and transducer (3rd) GPS 4' antenna
- C-Map charts - East & West Coast
- Simrad AP28 autopilot with WR20 remote commander
- Roberson AP-28 autopilot (pilothouse) & (2) AP24 controls, 1 remote
- Icom M604 VHF (pilothouse) with flush mount 18' antenna & hailer
- Icom M604 VHF (pilothouse 2nd) with flush mount
- Icom M504 (bridge) with flush mount & hailer (command-mic in galley)
- Furuno GPS
- Furuno AIS FA150 (pilothouse)
- Furuno RD30 depth, speed and temp (pilothouse)(3)
- Furuno RD30 depth, speed and temp (bridge)
- Sirius weather for NavNet 3D Airmar wind and weather
- Furuno NX-300

- There is an on board tower computer with high-end graphics running Max Sea Time Zero software. This is same software that powers the NavNet devices, and they are all networked together to work seamlessly. The advantage bigger screens than the NavNets, and super smooth and fast pan and zoom. The flybridge monitor echos the stb large screen monitor in the pilot house. Charts for everything from Seattle to SE Alaska and more. NavNet MFDBB with large screen in pilot house (port side).
- NavNet TZ-Touch 14" stb side pilothouse
- NavNet TZ-Touch 14" at flybridge
- Sirius/XM Sat radio available through Russound
- TRAC digital stabilizers with Arcturus Marine Digital Displays
- Bennett trim tabs with lighted indicators(2)
- Auto anchor system with port & starboard windlass (remote control)
- VDO helm indicator (2)
- American bow/stern thruster
- Oceanview Point Pad VRP
- ACR searchlight with remote control
- Compass (2)
- Manuals

## Internet

---

- Rogue Wave wifi antenna and receiver to pick up marina wifi signals
- KVH V7 Satellite Internet - works great even in Alaska
- Wave Router for selecting internet source (wifi, or V7, cable could be added)
- On board wifi hot spot for devices to connect to whichever internet connection is available
- Belkin charger & docking station
- Vtech DECT 6.0 phone with voice mail and head set tracking

## Audio & Video Equipment

---

- 37" Flat H-D Sony TV (salon)
- 15" Insignia TV (pilothouse)
- H-D DSS Receiver thru Russound
- Blue-Ray (salon) accessible by all TV thru Russound
- Russound audio/video 5-zone interface (pilothouse, salon, master, cockpit and bridge)and 6 inputs (#1 DSS, #2 DSS, # 3 DVD, #4 Thermal camera, #5 Computer/Ipod, #6 Stereo/CD/CCTV)
- 12v Stereo with 1 disc CD payer, custom speakers, Sirius radio (pilothouse, salon, master stateroom, cockpit, & bridge speaker with V/C at all speakers, Sub-wolfer and amp). Note: 4 speakers in the salon
- (4) Panamax surge protectors and teak rack to hold all equipment behind salon TV
- (2) Russound remotes

- Sirius/XM Sat radio also available through Russound

## Engine & Mechanical

---

- Engine hours: 1400 (12/2015)
- Genset hours: port 1279 / stbd 1217 (12/2015)
- ABT stabilizers with two hydraulic pumps
- Sidepower SP220 TC bow thruster, 3-station control with main switch & radio remote control
- Sidepower SP155 TC stern thruster, 3-station control with main switch & radio remote control
- Two water heaters
- Steelhead 1500 lb. Davit w/power rotation, 12' reach when horizontal
- Air conditioning in engine room 16000 BTU
- Oil change pumps for engines, transmissions and gensets
- (2) Charles isolation transformers 12kva
- ITIM fuel and water gauges with Computank
- Cable masters (2 pc), including 85 ft. cable and connectors
- Mechanical gauges for engines
- Twin Racor filters
- Filtration Concepts MQ1026S water maker

## Deck & Hull

---

- Double Gypsy vertical windlass - Maxwell 3500 (2)
- Primary anchor, S/S 120lb CQR with Fleming engraved logo
- 400' chain, 7/16" galvanized ACCO HT
- Secondary 80lb engraved with Fleming logo
- Portuguese bridge with teak deck throughout
- Non-skid locker lids on foredeck
- Non-skid on anchor platform
- Custom mast for KVH antenna 2nd dome & 6' radar
- ACR light with 2 controls port, on hardtop & pilothouse overhead
- 406 EPIRB with GPS and auto release
- (2) Halguard fire extinguishers
- Privacy shade at salon door
- Stainless steel gate on bridge for small dogs
- Custom stainless steel illuminated name boards
- Cockpit controls for engines and thrusters
- Cablemasters in cockpit (2) 50 amp, 220 volt with remotes
- Custom teak topped cockpit table - table can stow (2) electric Gocycles (not included) or folding bikes

- Teak on swimstep
- Switlik liferaft in cradle (6-man CLR 6H MDH)
- Side gate stainless steel hand rail
- Life jackets with bag (2)
- Ring buoy
- Lifesling w/rigid case mounted on bridge rail
- Hobie kayaks (2) in canvas covers
- Halguard fire extinguishers (3, one in each stateroom)
- Flares Kit
- (2) Fender balls w/black lines No. A4
- (2) Long fenders w/black lines No. F7
- Dock lines (6) black 7/8"
- Dock lines (6) black 5/8"
- Custom ultraleather bridge cushions
- Canvas Package: Windlass covers, windshield cover black tex, aft controls, tender, (4) bridge cushions, helm, custom cushion bridge, 4 side enclosure (3 side hardglass, aft side Strataglass)

---

## Tender

Nautica RIB13.5 wide-body with 40hp 4-stroke Yamaha - Black stripe on seat, fiberglass bow step, bow rail, hand rail to go over windshield, 12v outlet, side console seat, battery switch, VHF & depth, tow eye & bridle, black rub strike, white keel guard, rubber sole, (2) hand holds (forward & aft) folding ladder under, small GPS plotter.

---

## Pilothouse

- Slimline Stidd custom helm chair (low back)
- Drop-down berth with reading light in matching ultraleather
- Pilothouse seating on L-setee with dining table
- Full size chart table with drawers below, full height closet aft and a beautiful bookcase built-in
- Separate desk with large computer monitor, dedicated shelves, drawer, and swivel seat
- Privacy door between pilothouse and salon

---

## Flybridge

- Recessed lighting
- Granite sink counter top
- Granite table
- Non-skid decks

- Custom ultraleather bridge cushions
- Gas struts on helmseat
- Countertop with sink and granite serving bar
- Isotherm refer and icemaker
- Miele electric double BBQ - stainless steel deluxe gourmet
- Hinged yacht mast with double KVH domes
- Hard top with full enclosure
- Aft boat deck control docking station

---

## Cockpit

---

- Fresh water washdown in cockpit
- Cockpit speakers
- Opening cockpit seat box starboard side
- Overhead lights on cockpit overhang

---

## Remarks

---

A spectacular example of the Fleming 65 Pilothouse Motoryacht has arrived on Lake union, direct from her Alaska cruising adventure. Fully serviced, varnished and pretty as a picture, PENNY LANE is a 2009 delivery and is hull number 20 of the award winning Fleming yachts. In addition to Fleming Yachts fully redundant and precisely engineered systems, PENNY LANE is fitted with the upgraded 1100 hp MAN's, Fleming hardtop with full slide-opening enclosure, twin 21.5 Onan generators, thrusters, stabilizers, and full Furuno electronics suites at flybridge and pilothouse helm. Additional toys include custom aft deck table for cycle stowage, plus the ships tender aptly named RUBBER SOUL.

Chef's galley, audiophile sound system, and three staterooms where each guest cabin is designed to accommodate three persons. PENNY LANE shows tremendous pride of ownership. Fully serviced and ready for new owners extended cruising enjoyment, this yacht is priced to sell and easy to see at South Lake union.

---

## Exclusions

---

All personal gear; loose items; galley gear; CD's; charts; fishing equipment; tools; spare parts; supplies & items not specifically listed on equipment list specifications sheet.

---

## Exclusions

---

Owner's personal belongings.

---

## Disclaimer

---

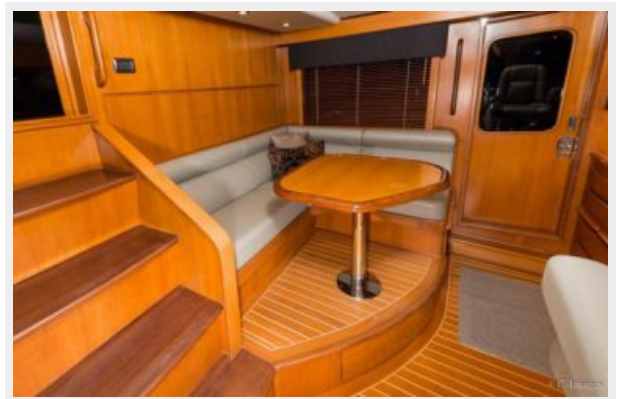
The Company offers the details of this vessel or yacht in good faith but cannot guarantee or warrant the accuracy of this information nor warrant the condition of the vessel. A buyer should instruct his representatives, agents, or his surveyors, to investigate such details as the buyer desires validated. This vessel or yacht is offered subject to prior sale, price change, or withdrawal without notice.

# PHOTOS

**Pilothouse**



**Pilothouse Seating & Table**



**Stairs to Pilothouse**



**Salon Looking Aft**



**Salon Aft Starboard**



**Pop-Up TV**





**Salon Hi-Low Table**



**Salon Port Aft - Wine Chiller**



**Galley**



**Galley**



**Galley Appliances**



**Refrigerator/Freezer**



## Companionway to Accommodations



## Master Stateroom Forward



## Master Stateroom



## Pop-Up Vanity w/Mirror & Light





## Master Head

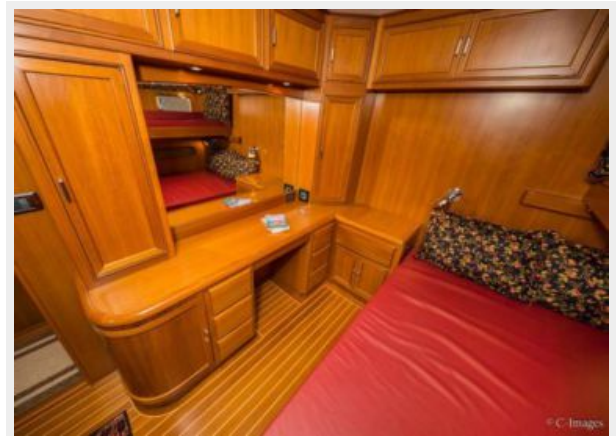
### Master Head Granite Counter Tops



### Master Head Shower



## VIP Stateroom



### VIP Head Compartment



### VIP Head



### VIP Shower



### Third Stateroom





**Third Stateroom**



**Engine Room**



**Engine Room**



**Engine Room**



**Engine Room**



**Engine Room**



**Engine Room**



**Bow Pulpit**



**Double Gypsy Windlass**



**Flybridge**



**Flybridge**



**Flybridge Helm**





## Flybridge Enclosures

### Flybridge Looking Aft



### RIB Center Console



### Tender



**Bridge Deck Docking Station**



**Miele Double Electric Grill**



**Miele Double Electric Grill**



**Aft Deck & Hard Top**





**Hard Top**



**Cockpit Controls**



**Covered Side Decks**



**Cockpit**



### Illuminated Name Boards



### Penny Lane



### Penny Lane



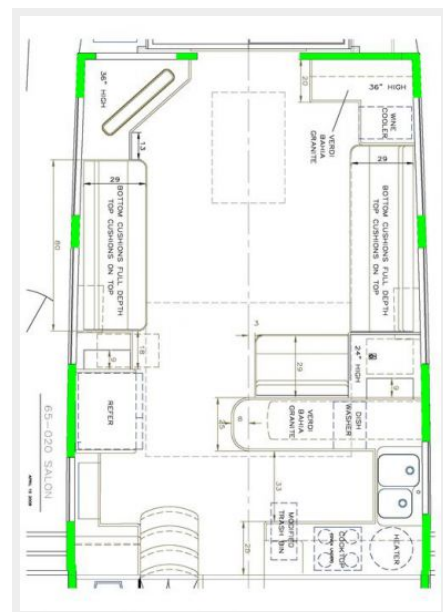
### Penny Lane



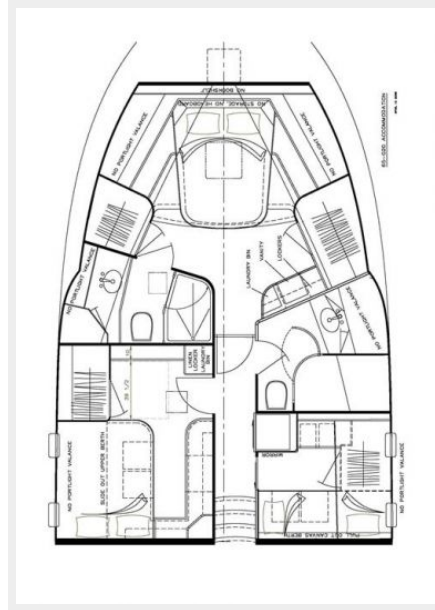
### Penny Lane



### Salon Layout



## Accommodations Layout



# CONTACTS

---

Andrey Shestakov, leading yacht broker of the sales department of Shestakov Yacht Sales Inc. Shestakov Yacht Sales Inc., the official representative of the Miami/Fort Lauderdale FL headquarters.

## Contact details

---

Email: [andrey@shestakovyachtsales.com](mailto:andrey@shestakovyachtsales.com)

Web: [shestakovyachtsales.com/en/](http://shestakovyachtsales.com/en/)

## Telephones

---

USA: +1(954)274-4435

## Office hours

---

Monday – Saturday: **9:00 - 21:00** EDT

Sunday: **closed**

## Address

---



Harbour Towne Marina, 850 NE 3rd St,  
STE 213, Dania, FL 33004