

CHEZ ELAINE — VIKING



Builder: VIKING

Year Built: 1996

Model: Motor Yacht

Price: PRICE ON APPLICATION

Location: United States

LOA: 60' 0" (18.29m)

Beam: 17' 5" (5.31m)

Max Draft: 4' 10" (1.47m)

Cruise Speed: 20 Kts. (23 MPH)

Max Speed: 26 Kts. (30 MPH)

Our experienced yacht broker, Andrey Shestakov, will help you choose and buy a yacht that best suits your needs **Chez Elaine — VIKING** from our catalogue. Presently, at Shestakov Yacht Sales Inc., we have a wide variety of yachts available on our sale's list. We also work in close contact with all the big yacht manufacturers from all over the world.

If you would like to buy a yacht **Chez Elaine — VIKING** or would like help answering any questions concerning purchasing, selling or chartering a yacht, please call **+1(954)274-4435**

TABLE OF CONTENTS

TABLE OF CONTENTS	2
SPECIFICATIONS	3
Overview	3
Basic Information	3
Dimensions	3
Speed, Capacities and Weight	3
Accommodations	4
Hull and Deck Information	4
Engine Information	4
DETAILED INFORMATION	5
Highlights	5
Deck & Exterior	5
Electronics	6
Electrical Equipment	6
Galley	6
Guest Room	6
VIP Stateroom	6
Master Stateroom	7
Tender	7
Exclusions	7
Disclaimer	7
PHOTOS	8
CONTACTS	20
Contact details	20
Telephones	20
Office hours	20
Address	20

SPECIFICATIONS

Overview

Chez Elaine is the best example of this model with a completely renovated interior and well maintained 12 cylinder Man engines and Onan generator. This 3 stateroom 3 head boat is Bahamas ready with a watermaker which is large enough to supply all of your needs. The bridge has its own independent a/c unit to keep you cool while you navigate with the 2 Northstar 6001 units and the separate Nobeltec computer. Sat TV, wet bar in the fully glass enclosed aft, granite counters, new appliances in the galley and electric grill in the cockpit make living aboard or entertaining easy and relaxing. The 13'5 AB, 50 hp Honda 4 stroke and 1500lb fully hydraulic davit make it easy to explore any anchorage. The cockpit makes docking and boarding a pleasure. No expense has been spared. Easy to see in Fort Lauderdale!

Basic Information

Category: Motor Yacht

Model Year: 1996

Year Built: 1996

Country: United States

Fly Bridge: Yes

Cockpit: Yes

Dimensions

LOA: 60' 0" (18.29m)

Beam: 17' 5" (5.31m)

Max Draft: 4' 10" (1.47m)

Speed, Capacities and Weight

Cruise Speed: 20 Kts. (23 MPH)

Cruise Speed RPM: 1750 Kts.

Max Speed: 26 Kts. (30 MPH)

Max Speed RPM: 2100 Kts.

Displacement: 78000 Pounds

Water Capacity: 200 Gallons

Fuel Capacity: 1300 Gallons

Fuel Consumption: 60 Gallons

Accommodations

Total Cabins: 3

Total Heads: 3

Hull and Deck Information

Hull Material: Fiberglass

Engine Information

Manufacturer: MAN

Engine Type: Inboard

Fuel Type: Diesel

DETAILED INFORMATION

Highlights

- Total renovation 2011
- Washer and dryer
- Dinette table
- Salon TV with Denon Stereo and surround sound
- New Aft Furniture
- Hydraulic up/down teak table
- New flip up tv and reconfigured bar
- New carpet throughout
- New sound system
- KVH Tracvision TV Satellite
- Water Maker

Deck & Exterior

- Flybridge hardtop with EZ2CY enclosure curtains
- Separate Flybridge air conditioning/heat
- Power windshield vents
- (3) windshield wipers/washers
- Flybridge and aft deck carpeting
- New Large flat screen HD TV- aft deck
- Aft deck hardtop with hard, opening enclosures and wing doors
- Aft deck wet bar with refrigerator/ice maker
- Aft deck furniture
- Windlass
- Swim platform with ladder
- New 1200 lb -3 direction -fully automatic hydraulic davit
- New EZ2CY enclosure
- New built in grill in cockpit
- Cushions
- Added 2nd cablemaster
- Awning extension
- Port side storage cover
- Fenders and docking balls
- 3 new helm seats
- Sun screen enclosure
- EBIRB

- Life Raft

Electronics

- New computer Nobeltec software
- 12" 6000i Northstar GPS also connected to satellite tv
- 9" 6000i Northstar GPS also connected to CCTV aft/engine room
- New Icom vhf
- Horizon VHF with remote intercom/ram mic in salon
- Furuno radar
- 2 digital depth finders
- Forward looking Interphase depth finder
- Simrad auto pilot with remote control

Electrical Equipment

- 6 x HVAC units

Galley

- New cook top
- New dishwasher 2012
- New microwave/convection oven 2013
- New single pedestal dinette table
- Side by side refrigerator/freezer
- New garbage disposal
- New black granite counter tops

Guest Room

- Upper and lower berths
- Hanging locker
- Storage drawers
- New Flat screen TV

VIP Stateroom

- Queen sized walk around bed
- New Flat screen TV

- Hanging locker
- Storage drawers
- En-suite head with stall shower
- VacuFlush head

Master Stateroom

- King size walk around island bed
- New HD Flat ScreenTV
- Hanging lockers
- Storage cabinets and drawers
- En-suite head with stall shower
- VacuFlush head
- Linen storage

Tender

13.5' center console AB tender with 50 HP Honda four stroke engine and 15 gal fuel tank, GPS and VHF radio

Exclusions

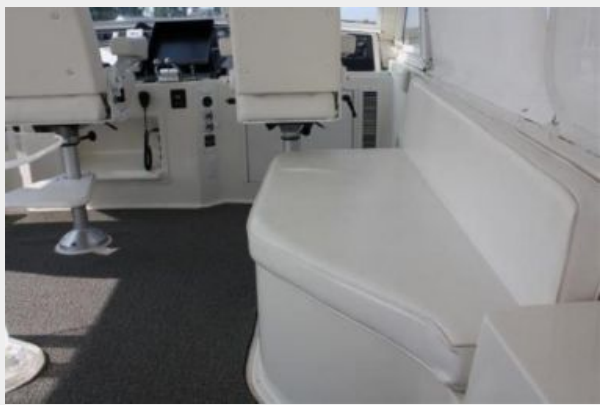
Owner's personal belongings.

Disclaimer

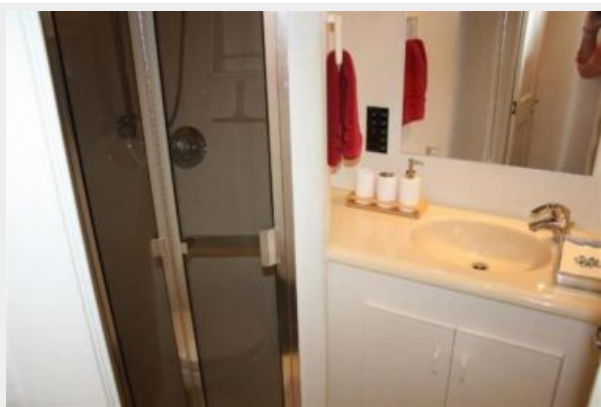
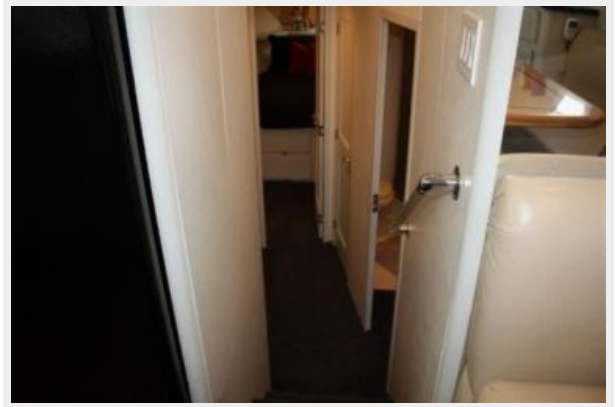
The Company offers the details of this vessel or yacht in good faith but cannot guarantee or warrant the accuracy of this information nor warrant the condition of the vessel. A buyer should instruct his representatives, agents, or his surveyors, to investigate such details as the buyer desires validated. This vessel or yacht is offered subject to prior sale, price change, or withdrawal without notice.

PHOTOS



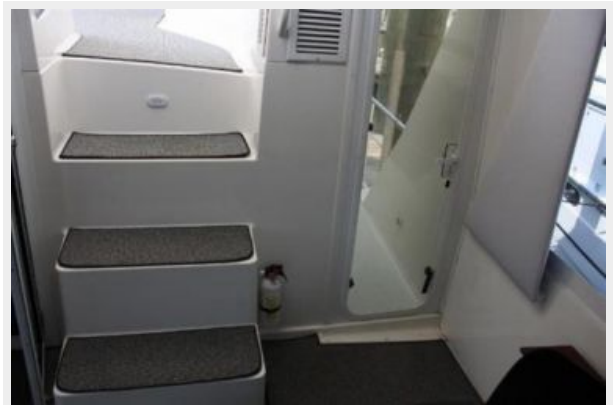






















CONTACTS

Andrey Shestakov, leading yacht broker of the sales department of Shestakov Yacht Sales Inc. Shestakov Yacht Sales Inc., the official representative of the Miami/Fort Lauderdale FL headquarters.

Contact details

Email: andrey@shestakovyachtsales.com

Web: shestakovyachtsales.com/en/

Telephones

USA: +1(954)274-4435

Office hours

Monday – Saturday: **9:00 - 21:00** EDT

Sunday: **closed**

Address



Harbour Towne Marina, 850 NE 3rd St,
STE 213, Dania, FL 33004