

BUCKET LIST — JEFFERSON



Судостроитель: JEFFERSON

Длина общая: 42' 0" (12.80m)

Год постройки: 1986

Ширина: 14' 3" (4.34m)

Модель: Крейсер

Цена: **ЦЕНА ЯХТЫ ПО ЗАПРОСУ**

Местонахождение: United States

Купить **Bucket List — JEFFERSON** а также выбрать подходящую вам яхту из нашего каталога яхт вам поможет опытный яхтенный брокер Андрей Шестаков. На сегодняшний день компания **Shestakov Yacht Sales Inc.** имеет большое количество яхт в собственном списке продаж, а также тесно сотрудничает со всеми крупными яхтенными производителями по всему миру.

Для того чтобы купить яхту **Bucket List — JEFFERSON** а также проконсультироваться по любому вопросу связанному с покупкой, продажей, чартером яхт позвоните по телефону **+7(918)465-66-44**.

ОГЛАВЛЕНИЕ

ОГЛАВЛЕНИЕ	2
ХАРАКТЕРИСТИКИ	3
Обзор	3
Основная информация	6
Размеры	6
Скорость, вместимость и масса	6
Размещение	6
Корпус и палуба	6
Информация о двигателе	6
ФОТОГРАФИИ	7
КОНТАКТЫ	16
Контактная информация	16
Телефоны	16
Время работы	16
Адрес	16

ХАРАКТЕРИСТИКИ

Обзор

BRAND NEW LISTING Nov 1st 2015.

If you're in the market for a well maintained and upgraded Sundeck Trawler perfectly suited for cruising and/or live-a-board you must see this beautiful Jefferson 42 "Bucket List". Upgraded interior includes Custom Black Granite counters in Galley and Heads, stainless back splash in Galley 'n Dinette with built in wine and spice racks, newer vinyl upholstery in salon and dinette and lots more impressive touches.

Incredible amount of added storage throughout including custom cabinetry in Master Stateroom.

The Jefferson 42 has all fiberglass decks with no problems commonly associated with teak decks.

Engines Engine 1: Engine Brand: Perkins Year Built: 1986 Engine Model: T6.3544 Engine Type: Inboard Engine/Fuel Type: Diesel Location: Starboard Drive Type: Direct Drive Engine Power: 200 HP Engine 2: Engine Brand: Perkins Year Built: 1986 Engine Model: T6.3544 Engine Type: Inboard Engine/Fuel Type: Diesel Location: Port Drive Type: Direct Drive Engine Power: 200 HP

Dimensions

LOA: 42 feet Beam: 14.25 feet Displacement: 30000 pound Bridge Clearance: 16.75 feet

Tankage

Fuel: 350 gallon Water: 55 gallon Holding: 40 gallon

Accommodations

Most forward is chain locker followed by Forward Stateroom with Vee Berth, overhead shelves to either side and storage drawers underneath. Aft to starboard is a hanging locker and a private entry to Head is to port. Aft to starboard is an L shaped Galley and across to port is Dinette. 3 steps up to Salon to Starboard is Lower Helm followed by side access door and "L" shaped Settee just aft to starboard. Entertainment /Office area to port. 3 steps down to Master Stateroom with centerline Queen Size berth and hanging lockers and vanity to port and custom cabinetry for additional storage to starboard. Forward to starboard is Head followed by hanging locker and storage drawers. Teak parquet flooring throughout. Exit Salon aft through custom sliding Lexan door to Sun Deck with chairs and table. 4 steps up to Flybridge with Helm, Captains chair and

port and starboard bench seats. Dinghy and outboard motor with davit on top of Sun deck hardtop.

Galley

Galley Down with Custom Granite counter top

Slide out pantry for very convenient storage

GE front loading 18cuft 120vAC refrigerator

Galley Maid 3 burner 120vAC stove with oven

Custom stainless steel back splash with spice holders

GE microwave

Double stainless steel sinks Pressure fresh water system

8 gallon 120vAC hot water heater(new 2012)

Portside Dinette with custom stainless steel wine rack

Electronics and Navigation Equipment

Robertson JP21 autopilot

Aqua Meter 4" compass on Bridge Helm and Ritchie 5" compass on lower Helm

Garmin 140 depth finder on Bridge Helm and Datamarine digital depth finder on lower Helm

Raytheon RL80C 24 mile radar, GPS and Depth interfaced with autopilot on Bridge Helm

Raytheon RL70C 24 mile radar, GPS and Depth on lower Helm

Standard Horizon VHF radio with DSC on Bridge Helm

ICOM IC 407 VHF radio

1 hand held VHF radios

Datamarine speed & distance log on Bridge Helm

TFT engine room monitor on Bridge

Sony AM/FM/CD stereo with surround sound with remote for Bridge

1- 32" LED flat screen TV's, Emerson & Vizio

1 Nikon 8X40 binoculars

Electrical System

6-6vDC Trojan lead acid batteries for House 2 Series 27 lead acid batteries for each engine starting (new Sept 2015) 4 battery selector switches Xantrex Freedom Marine 20-2000 watt inverter/100amp battery charger Westerbeke 7.5kw generator 1-4D lead acid battery for Generator (new June 2014) 12vDC & 120vAC electrical panel with circuit breakers 2-50' shore power 30amp 120vAC cables 200 watt solar panel with voltage regulator

Mechanical Equipment & Engine Details

Marine Air 16,000btu reverse cycle air conditioner (new May 2015) Marine Air 12,000 reverse cycle air conditioner

2-12vDC bilge blowers 2-12vDC automatic bilge pumps

Cabin & Bridge controls Engine alarms 2 First Alert CO2/smoke alarms Halon automatic fire extinguisher Engine fresh water cooling system

Engine synchronizers 2 Racor 900 fuel filter/water separators for engines Manual oil change system 2 electric toilets with Electra San and 40 gallon holding tank with macerator pump Hydraulic wheel steering at both Helms Bennett trim tabs

Borg Warner 2.5:1 reduction transmission with 2" stainless steel shafts Portside Rebuilt (April 2015) w/new damper plate (April 2015) Starboard Rebuilt (July 2014) w/new damper plate (Sept 2015) 25"x26" bronze 4 blade props Cutlass bearings Bottom painted October 2013 New Fresh Water Circulating Pumps (April 2015) Rebuilt Starters (July 2014) Rebuilt Raw Water Pumps (July 2014) Rebuilt Manifold Port Engine (June 2015) Lots of Spare Parts

Deck Equipment

45lb stainless steel plow anchor with 75' of 5/16" galvanized chain & 200' of 5/8" nylon rode

35b Danforth anchor with chain & rode Bow pulpit & rails Side stanchions with double life lines Fixed aluminum hard top with canvas and full Isinglass enclosure USCG approved safety package

Fiberglass non skid decks West Marine 10' RIB 4 person dinghy & 15hp Mercury 2 stroke motor Fenders & dock lines 2 deck boxes on fore deck 8 life jackets Navigation lights Single 12vDC remote controlled search light Fiberglass swim platform with stainless steel swim ladder 12vDC windlass

Основная информация

Тип судна: Крейсер

Модельный год: 1986

Год постройки: 1986

Страна: United States

Размеры

Длина общая: 42' 0" (12.80m)

Ширина: 14' 3" (4.34m)

Трапы: 16' 9" (5.11m)

Скорость, вместимость и масса

Водоизмещение: 30000 Pounds

Вместимость воды: 55 Gallons

Вместимость сточного бака: 40 Gallons

Объем топливного бака: 350 Gallons

Размещение

Всего кают: 4

Всего коек: 4

Спальные места: 6

Корпус и палуба

Материал корпуса: Fiberglass

Информация о двигателе

Двигатели: 2

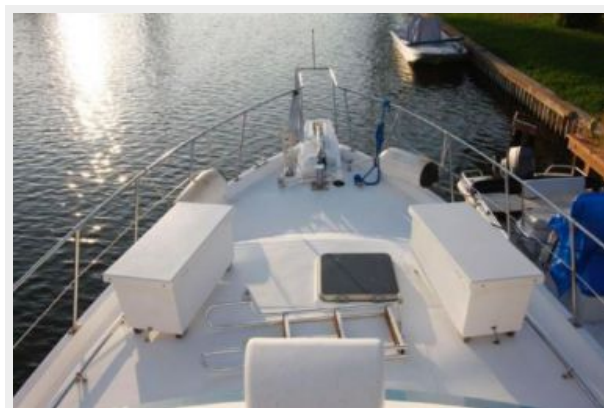
Производитель: Perkins

Модель: T6.3544

Тип двигателя: Inboard

Тип топлива: Diesel

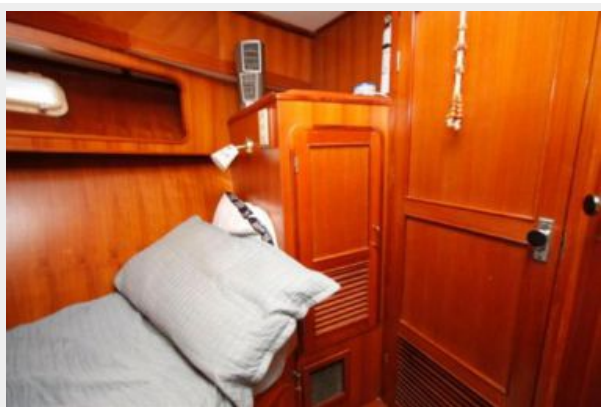
ФОТОГРАФИИ

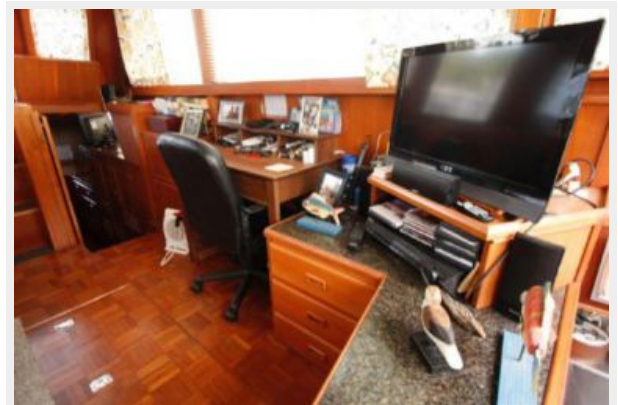
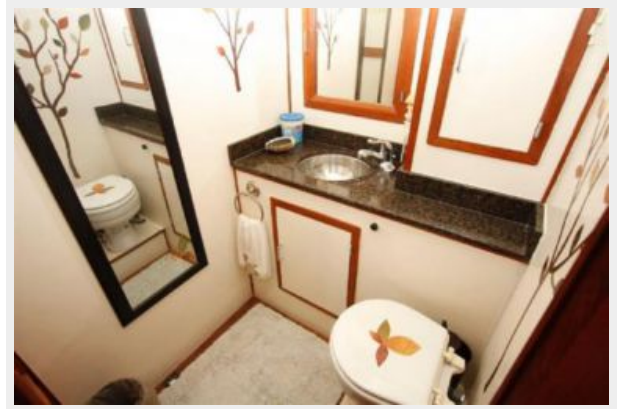


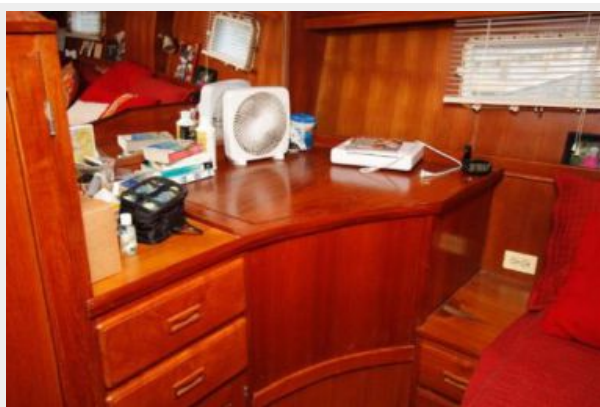


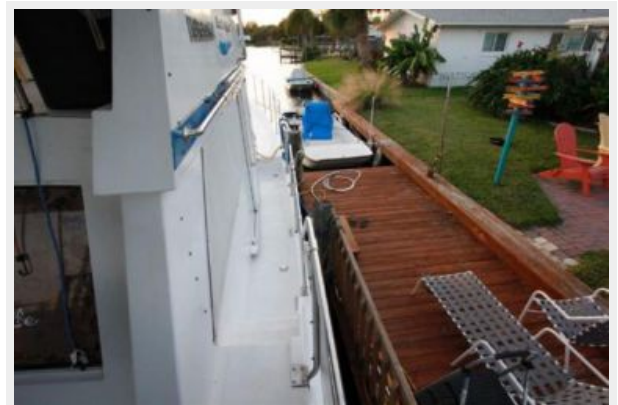
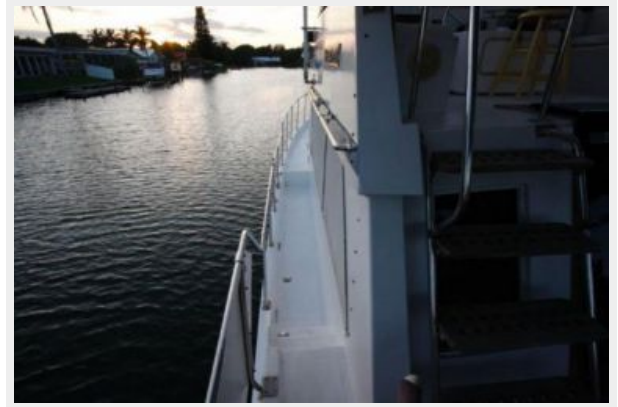














КОНТАКТЫ

Андрей Шестаков (Andrey Shestakov) – ведущий яхтенный брокер отдела продаж яхт и судов компании Shestakov Yacht Sales Inc. Официальный представитель Shestakov Yacht Sales Inc. для русскоговорящих клиентов в центральном офисе компании в Майами/Форт Лодердейл/Флорида/США.

Контактная информация

Email: andrey@shestakovyachtsales.com

Web: shestakovyachtsales.com

Телефоны

Краснодарский край: **+7(918)465-66-44**

США, Майами, Флорида: **+1(954)274-4435**

Время работы

Понедельник – Суббота: **9:00 - 21:00**
EDT

Воскресенье: **Закрето**

Адрес



Harbour Towne Marina, 850 NE 3rd St,
STE 213, Dania, FL 33004