

## HEMABEJO — BENETTI



**Судостроитель:** BENETTI

**Год постройки:** 2014

**Модель:** Моторная яхта

**Цена:** **ЦЕНА ЯХТЫ ПО ЗАПРОСУ**

**Местонахождение:** Malta

**Длина общая:** 132' 0" (40.24m)

**Ширина:** 26' 11" (8.18m)

**Макс. осадка:** 7' 4" (2.23m)

**Крейс. скорость:** 14 Kts. (16 MPH)

**Макс. скорость:** 16 Kts. (18 MPH)

Купить **HEMABEJO — BENETTI** а также выбрать подходящую вам яхту из нашего каталога яхт вам поможет опытный яхтенный брокер Андрей Шестаков. На сегодняшний день компания **Shestakov Yacht Sales Inc.** имеет большое количество яхт в собственном списке продаж, а также тесно сотрудничает со всеми крупными яхтенными производителями по всему миру.

Для того чтобы купить яхту **HEMABEJO — BENETTI** а также проконсультироваться по любому вопросу связанному с покупкой, продажей, чартером яхт позвоните по телефону **+7(918)465-66-44**.

# ОГЛАВЛЕНИЕ

ОГЛАВЛЕНИЕ	2
ХАРАКТЕРИСТИКИ	4
Обзор	4
Основная информация	4
Размеры	4
Скорость, вместимость и масса	4
Размещение	4
Корпус и палуба	5
Информация о двигателе	5
ПОДРОБНОЕ ОПИСАНИЕ	6
WALKTHROUGH	6
STRUCTURE	7
MAIN MACHINERY	7
ELECTRICITY	7
OUTFITTING	8
VENTILATION & AIR CONDITIONING	8
NAVIGATION & COMMUNICATIONS EQUIPMENT	8
ENTERTAINMENT EQUIPMENT	10
INTERIORS	13
GALLEY & LAUNDRY EQUIPMENT	13
Исключения	14
Отказ от ответственности	14
ФОТОГРАФИИ	15
КОНТАКТЫ	24
Контактная информация	24
Телефоны	24
Время работы	24
Адрес	24



# ХАРАКТЕРИСТИКИ

## Обзор

The new Classic Supreme 132' unites the design characteristics and comfort of a large displacement superyacht by Benetti with innovative design solutions.

## Основная информация

Тип судна: Моторная яхта

Подкатегория: Flybridge

Модельный год: 2014

Год постройки: 2014

Страна: Malta

Открытая палуба мостика: Да

## Размеры

Длина общая: 132' 0" (40.24m)

Длина по ватерлинии: 109' 2" (33.25m)

Ширина: 26' 11" (8.18m)

Макс. осадка: 7' 4" (2.23m)

## Скорость, вместимость и масса

Крейс. скорость: 14 Kts. (16 MPH)

Макс. скорость: 16 Kts. (18 MPH)

Водоизмещение: 606271.2205 Pounds

Чистый вес: 346 Pounds

Вместимость воды: 1902.0387744  
Gallons

Объем топливного бака: 11887.74234  
Gallons

## Размещение

Всего кают: 6

Всего коек: 12

Спальные места: 12

Койки экипажа: 7

Спальных мест экипажа: 7

## Корпус и палуба

---

**Материал корпуса:** FRP

**Комплектация корпуса:** Full  
Displacement

**Дизайнер экстерьера:** Stefano Righini

**Дизайнер интерьера:** Francois Zuretti

## Информация о двигателе

---

**Двигатели:** 2

**Производитель:** MTU

**Модель:** 12V2000 M72 (1080 kW)@2.250  
rpm

# ПОДРОБНОЕ ОПИСАНИЕ

## WALKTHROUGH

The new Classic Supreme 132' unites the design characteristics and comfort of a large displacement superyacht by Benetti with innovative design solutions.

The extensive full-height windows guarantee light-filled interiors and a seamlessly evocative view of the sea, while imprinting the exteriors designed by Stefano Righini with unprecedented dynamism. The two separate sunbathing and Jacuzzi areas - on the sun deck and in the bow - provide twice the livability. The bridge wings that retract into the gunwale, the open exterior stairways and integrated running lights give the yacht even more dynamic and streamlined styling. The retracting terrace in the Owner's suite, unique in a yacht of this length, provides yet another area for privacy and relaxation at the water's edge. Like all the other models in the Class Range, the interiors of Classic Supreme 132' can be fully customized. The Owner's desires are interpreted through the design sensibility and expertise of François Zuretti to transform the yacht into a unique craft. Classic Supreme 132' also delivers technological excellence. The BEST platform - Benetti's Exclusive Sea Technology - integrates all electronic equipment and on board systems into the same user-friendly interface. The helm station integrated in the dashboard translates into a more minimalist design, with three monitors and three touch panels with joysticks offering total control for straightforward yacht management.

A sea-going penthouse with a 100 sq mt sun deck, a day-head and four clearly separated areas to offer guests comfort and privacy even when outdoors. At the stern, the sunbathing area with Jacuzzi and the living area with full-custom interior decoration; in the bow, a spacious dining area, covered by a fiberglass hard top with electronically adjustable awning and built-in lighting, and a second living area for maximum enjoyment of the spectacular sea view.

The bow section of the upper deck is home to one of the major innovations in the exterior layout of Classic Supreme 132': the relaxation and sunbathing area. Complete with a Jacuzzi sunken into the deck and provided with adjustable sun umbrellas, it ensures that both Owner and guests enjoy a relaxing cruise caressed by the sea breeze. Like all the exterior decks, the upper deck is built from FSC-certified teak.

Classic Supreme 132' presents cutting edge design solutions and technological innovations. The exterior section of the upper deck features an open stairway built from steel with teak steps, designed to make the deck even more spacious, full of light and functional. The extending balcony in the Owner's suite represents a remarkably novel and appealing feature. This private veranda can be extended and retracted as required to offer uniquely exclusive moments of relaxation and privacy.

The main saloon, the place of choice for Owner and guests to meet and share the pleasure of life on board, is bathed in natural light that literally floods in through the big windows on both sides.

The sky lounge has two full-height windows that offer not only a fine panoramic view, but also

bathe the card table, bar corner and sofa with peninsula in light. The BEST system makes it possible to use this multi-functional area as a full-blown media room to entertain the Owner and his or her guests.

The Master Cabin in Classic Supreme 132' is designed as a suite in the true sense of the word. 56 square meters for the Owner's exclusive use, including a study area, in an impeccable combination of function and comfort that expresses Benetti's signature style to perfection. The bathroom area also combines mosaic, leather and marble to create a perfect stylistic balance.

Like the other Benetti Class Range vessels, Classic Supreme 132' is fitted with innovative technology. The BEST platform - Benetti's Exclusive Sea Technology - integrates all electronic equipment and on board systems (from entertainment to automation and from communications to security) into the same userfriendly interface. The innovative, integrated helm station provides an interface with all navigation and communication instruments to ensure safe and reliable yacht operation. The dashboard has a modern, minimalist design, with three monitors, three touch panels and three mouse pads to manage and control the entire yacht using only a few advanced technology tools.

## STRUCTURE

---

Hull and deck are entirely built in FRP (Fiberglass Reinforced Plastic) with combination of foam core sandwich and single skin fiberglass construction.

Superstructure is built in Fiberglass Reinforced Plastic with a cored sandwich structure. The connection between the superstructure and the main deck will be obtained by means of stainless steel bolts and flanges and an adequate number of FRP layers according to the Classification Society requirements.

## MAIN MACHINERY

---

Main engines 2 x MTU 12V2000 M72 1080 kW @ 2250 rpm Engine hours: stbd: 174, portside: 174 Gear box 2 x ZF 3351 Generators 2 x 80 kW 400 Vac / 3 phases / 50Hz Propellers 2 x five fixed blades made in nickel - aluminium - bronze Water maker 1 x reverse osmosis water makers (capacity 7,100 lt / day sea water temperature) Bow thruster Hydraulic motor of 60 kW Naiad marine Stabilisers Navigation Stab and Zero Speed at anchor Naiad Marine

## ELECTRICITY

---

The electrical equipment, wiring, fixtures, boards, switches etc. is designed, located, installed and tested according to the Classification Society rules, regulations and requirements.

The main power system consist of a 400 Vac, 3 phases + neutral at earth, 50 Hz. The Lighting

system: 230 Vac, 1 phase + transformers 24 Vac, 50 Hz. Emergency lighting system, Radio system and services: 24 V DC battery system.

## OUTFITTING

---

Windlasses 2 x 380 Vac / 3 phases vertical type Capstans 2 x electric foot operated (380 Vac / 3 phases and power 2,000 W) Anchors 2 x galvanised steel High Holding Power HHP of the weight of 225 kg each Chains 2 x made of galvanised steel of 16 mm diameter with stud link Gangway 1 x hydraulic retractable telescopic 3-stage Tender and water toys storage Located on the aft garage n.1 Tender of 5,65 mt and n.1 jet-ski

## VENTILATION & AIR CONDITIONING

---

Air conditioning system The air conditioning system is designed on the following data: Summer conditions Outside air 35 °C - 95 F - R.H. 90% Inside air 22 °C - 72 F - R.H. 55% Sea water temperature 32 °C - 90 F Winter conditions Outside air 0 °C - 32 F Inside air 22 °C - 72 F Sea water temperature 10 °C - 50 F Ventilation system Engine Room A supply and extraction fans system will be installed for engine room ventilation. The fans will be of the axial flow type, flexibly mounted in the ventilation trunks or in the engine room. Out Engine Room In general technical compartments and storages will be naturally ventilated to ensure adequate ventilation of each space to avoid overheating and condensation. The following compartments will have forced extraction:

- - forward technical room and storage underneath (bosun locker)
- - bilge below crew area
- - garage
- - main switchboard room
- - chiller room
- - battery boxes in engine room and in main deck technical lockers at mid sides
- - engine room fire extinguishing system bottles box on aft stbd main deck.

## NAVIGATION & COMMUNICATIONS EQUIPMENT

---

The following equipment are installed: INTEGRATED NAVIGATION SYSTEM “iBridge”

Visualizing system including:

- - n° 3 LCD monitor (standard) 19” IP 65 marinized
- - n° 2 LCD monitor (standard) 10” IP 65 marinized – for wings
- - n° 1 control system
- - n° 1 conversion system
- - n° 1 switching system



- - n° 1 cartography system
- - n° 1 cartography software
- Control system including:
  - - n° 1 tiller + jogger + trackball control set
  - - n° 3 touch panel control LCD 15", to monitor / control the following equipment:
    - - Radars
    - - Echosounder
    - - Wipers
    - - Horn
    - - Steering pumps
    - - Video switching of the monitoring system
    - - Monitors dimming
    - - Search lights
    - - Steering mode
    - - Monitoring system
    - - Engine data

#### Navigation sensors including:

- - n° 1 radar, 12 kW, 96 miles, 4 ft antenna IMO approved
- - n° 1 graphic depth / log transducer
- - n° 1 NMEA depth / log transducer
- - n° 1 GPS IMO approved
- - n° 1 gyro-compass system
- - n° 1 overhead mounting magnetic compass
- Charting Plotter system including:
  - - n° 1 processor black box
  - - n° 1 charting software (charts excluded)

#### Conning display system including:

- - n° 1 PC marinized
- - n° 1 software TI AD NMEA01 BASIC for simultaneous viewing of:
  - - heading, rate of turn, Yacht speed, speed over ground, depth, water temperature, wind speed, wind direction, GPS, air temperature, air pressure
  - - engine modules on the naviconning system in wheelhouse
  - - conning system data on wings - rudder angle indicator on the naviconning for wings and wheelhouse

#### Weather station including:

- - Transducers interface
- - Ultrasonic wind and pressure / temperature sensor on mast (integrated)
- - Integrated GPS
- - n° 1 display multi NMEA (for captain's cabin)

Autopilot and manouvering system including:

- - n° 1 autopilot system, micro-processor controlled, with feedback system
- - n° 1 LED rudder angle indicator
- - n° 1 take-over system with PLC

Wing stations

Two control stations with 10" displays will be positioned externally at both sides of the wheelhouse and will include all the necessary commands and instruments for manoeuvring the Yacht in mooring operations, that is:

- - steering tiller
- - slave bow thruster control lever
- - horn
- - main engine throttles
- - MMEE start / stop buttons and alarm signal, emergency stops

## ENTERTAINMENT EQUIPMENT

---

Main saloon

- - 1 x TV 52" LED full HD 1080P - 16:9
- - 1 x Audio / video receiver, AM / FM Tuner – HDMI Input / Output
- - 1 x "BEST" Audio video Client
- - 1 x High quality speaker system surround 7.1 with powered subwoofer
- - 1 x Integrated Wi-Fi remote control
- - 1 x I-pod Docking station

Dining area

- - 1 x Keyboard for volume control
- - 1 x Pair of loudspeakers

External Main Deck

- - 1 x Keyboard for volume control
- - 2 x Pair of marinized speakers

Guest's cabins

- - 1 x TV 26" LCD HD ready - 16:9
- - 1 x Audio video receiver – AM / FM Tuner – HDMI Input / Output
- - 1 x "BEST" Audio video Client
- - 1 x Pair of loudspeakers
- - 1 x Integrated Wi-Fi remote control

- - 1 x I-pod Docking station

#### Owners cabin

- 1 x TV 40" LED full HD 1080P - 16:9
- 1 x Audio / video receiver, AM / FM Tuner, HDMI Input / Output
- 1 x "BEST" Audio Video Client
- 1 x High quality speaker system surround 5.1 with powered subwoofer
- 1 x Integrated Wi-Fi remote control
- 1 x I-pod Docking station

#### VIP's cabin

- - 1 x TV 32" LCD HD ready - 16:9
- - 1 x Audio Video receiver – AM / FM Tuner – HDMI Input / Output
- - 1 x "BEST" Audio video Client
- - 1 x Pair of loudspeakers
- - 1 x Integrated Wi-Fi remote control
- - 1 x I-pod Docking station

#### Captain's cabin

- - 1 x TV 22" LCD HD ready – 16:9
- - 1 x Micro Hi-Fi – AM / FM Tuner - CD player
- - 1 x Pair of loudspeakers
- - 1 x Infrared receiver
- - 1 x I-pod Docking station

#### Engineer's cabin

- - 1 x Micro Hi-Fi– AM / FM Tuner – CD player
- - 1 x Pair of loudspeakers
- - 1 x I-pod Docking station

#### Crew cabins

- - 1 x Micro Hi-Fi – AM / FM Tuner - CD player
- - 1 x Pair of loudspeakers
- - 1 x I-pod Docking station

#### Crew mess

- - 1 x TV 26" LCD HD ready - 16:9
- - 1 x Micro Hi-Fi – AM / FM Tuner - DVD player
- - 1 x Pair of loudspeakers
- - 1 x I-pod Docking station

## Galley

- - 1 x Micro Hi-Fi – AM / FM Tuner – DVD player
- - 1 x Pair of loudspeakers
- - 1 x I-pod Docking station

## Sky lounge

- - 1 x TV 52” LED full HD 1080P - 16:9
- - 1 x Audio Video receiver – AM / FM Tuner – HDMI Input / Output
- - 1 x “BEST” Audio video Client
- - 1 x High quality speaker system surround 5.1
- - 1 x Integrated Wi-Fi remote control
- - 1 x I-pod Docking Station

## Gym room

- - 1 x Pair of loudspeakers
- - 1 x BEST audio touch panel
- - 1 x I-pod Docking Station

## External upper deck aft

- - 1 x Key board for volume control
- - 3 x Pairs of marinized speakers

## External upper deck fwd

- - 1 x Marine CD / mp3 player – radio tuner
- - 2 x Pair of marinized speakers

## Sun deck

- - 1 x Marine CD / mp3 player – radio tuner
- - 4 x Pairs of marinezed speakers

## Wheelhouse

- - 1 x Micro Hi-Fi – sintoamplifier – CD player
- - 1 x Pairs of marinized speakers

## TV SAT

- - 1 x TV antenna system for terrestrial broadcasting reception
- - 1 x Radio antenna system for terrestrial broadcasting reception - “BEST” Integrated Entertainment System

## INTERIORS

---

All decorative material, loose furniture, fittings, accessories, hardware etc. are chosen according to the proper interior style and Benetti Excellence Range.

**Walls** Wall finish with panels of marine plywood, veneered or /and fabric upholster are fitted in the owner's cabin, Owner's study, Owner's dressing, Main foyer, main saloon, dining area, guest's cabin, guest's lobby, main stairs, sky lounge, upper lobby, crew cabins, wheelhouse, powder rooms and bathrooms. Woods, veneered and solid, are chosen in the Benetti Excellence Range  
**Floors** Wool carpet is fitted in guest's cabin, guest's lobby, Owner's cabin, Owner's study, Owner's dressing, Main saloon, dining area, sky lounge, upper lobby, main stairs. Marble floor is fitted as per marble plan. Soft vinyl. Shower floor have drippan of fibreglass and anti slippery varnished wood grating.

Carpet is chosen in the Benetti Excellence Range  
**Ceilings** Fabric and leather for ceiling covered is chosen in the Benetti Excellence range selection. Laminated panels or vinyl upholstered is fitted in stores, laundry and crew area. Lacquered panels is fitted in powder rooms, Owner's bathrooms, guest's bathrooms, crew's bathrooms and galley  
**Door** Internal doors in the accommodation is made of double plywood sandwich panels  
**Sanitary ware and taps** Wash basins, sink and bath as per General Arrangement and the Interior's Book

**Hardware** All Hardware in general is chosen in the Benetti Excellence Range  
**Loose furniture** According to the General Arrangement drawing. Loose furniture is chosen in the Benetti Excellence Range

## GALLEY & LAUNDRY EQUIPMENT

---

Domestic equipment is supplied in accordance with the domestic equipment plan and the Benetti Excellence range.

### Main deck Galley / Pantry

- - n° 1 cooking top 90 cm
- - n° 1 exhaust hood
- - n° 1 oven 90 cm
- - n° 1 microwave
- - n° 1 dishwasher
- - n° 1 garbage macerator for the sink
- - n° 2 freezer / fridge built
- - n° 1 trash compactor
- - n° 1 wine cellar undertop type

### Main deck bar

- - n° 1 ice maker

- - n° 1 minifridge

#### Owner's study

- - n° 1 minifridge

#### Sky Lounge bar

- - n° 1 ice maker
- - n° 1 minifridge

#### Sun deck area

- - n° 1 barbecue
- - n° 1 ice maker
- - n° 1 minifridge

#### Laundry

- - n° 2 washer machine
- - n° 2 dryer machine

#### Guest lobby

- - n° 1 minifridge

---

## Исключения

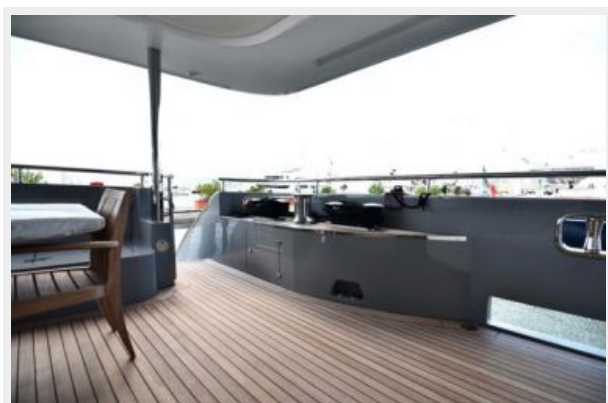
При продаже яхты исключаются личные вещи владельца.

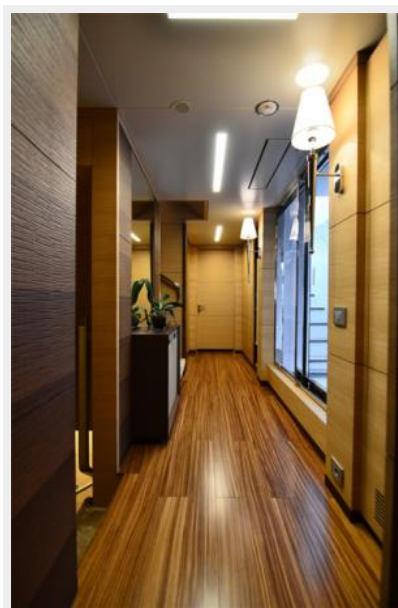
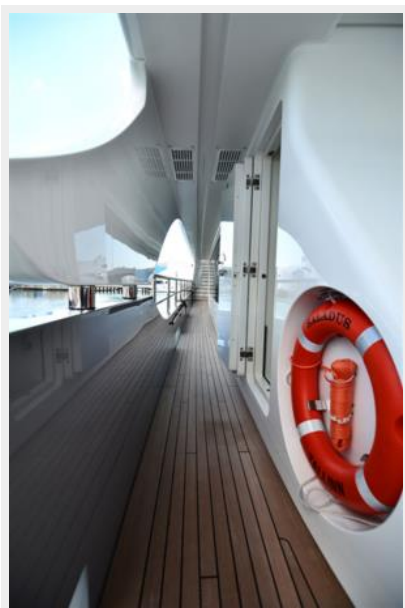
---

## Отказ от ответственности

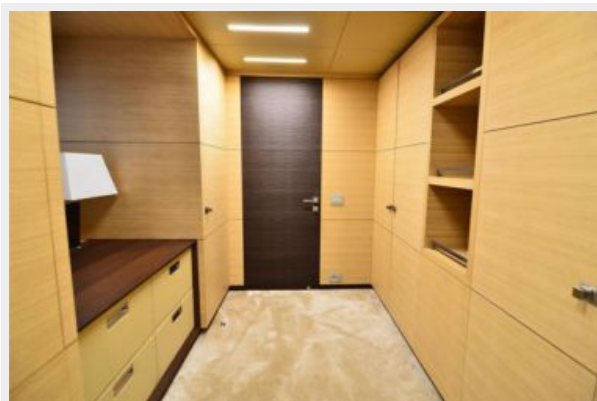
Компания предоставляет описание судна или яхты добросовестно, но не может гарантировать точность этой информации, а также не ручается за техническое состояние. Покупатель должен проинструктировать своих агентов или оценщиков исследовать представленную информацию более подробно, по собственному желанию. Продажа судна или яхты, изменение цены или снятие с продажи будет происходить без предварительного уведомления.

# ФОТОГРАФИИ







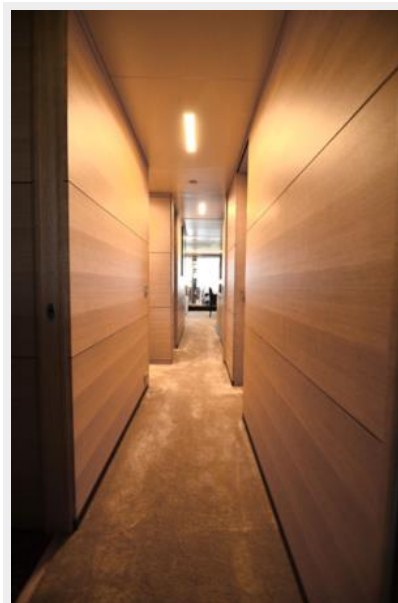






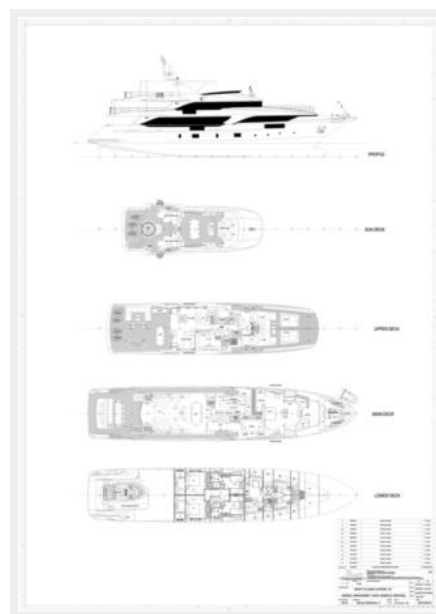
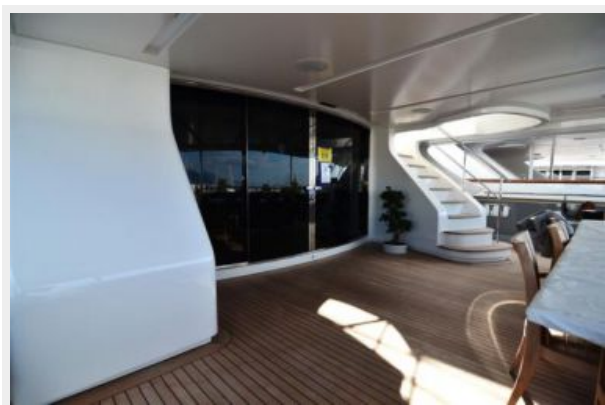












# КОНТАКТЫ

Андрей Шестаков (Andrey Shestakov) – ведущий яхтенный брокер отдела продаж яхт и судов компании Shestakov Yacht Sales Inc. Официальный представитель Shestakov Yacht Sales Inc. для русскоговорящих клиентов в центральном офисе компании в Майами/Форт Лодердейл/Флорида/США.

## Контактная информация

Email: [andrey@shestakovyachtsales.com](mailto:andrey@shestakovyachtsales.com)

Web: [shestakovyachtsales.com](http://shestakovyachtsales.com)

## Телефоны

Краснодарский край: **+7(918)465-66-44**

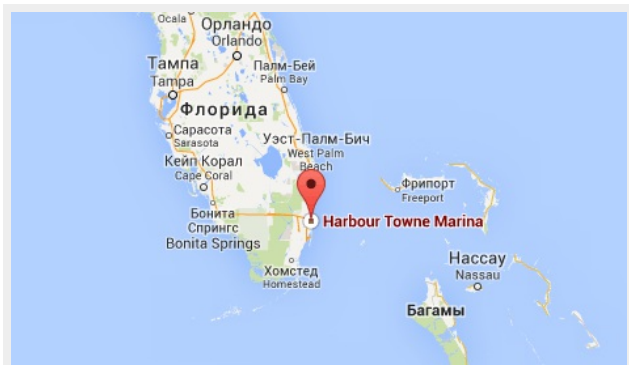
США, Майами, Флорида: **+1(954)274-4435**

## Время работы

Понедельник – Суббота: **9:00 - 21:00**  
EDT

Воскресенье: **Закрето**

## Адрес



Harbour Towne Marina, 850 NE 3rd St,  
STE 213, Dania, FL 33004