

## SALT MINE — SPENCER YACHTS



**Судостроитель:** SPENCER YACHTS

**Год постройки:** 2007

**Модель:** Катер для спортивной рыбалки

**Цена:** ЦЕНА ЯХТЫ ПО ЗАПРОСУ

**Местонахождение:** United States

**Длина общая:** 43' 0" (13.11m)

**Ширина:** 14' 6" (4.42m)

**Мин. осадка:** 3' 6" (1.07m)

**Крейс. скорость:** 28 Kts. (32 MPH)

**Макс. скорость:** 33 Kts. (38 MPH)

Купить Salt Mine — SPENCER YACHTS а также выбрать подходящую вам яхту из нашего каталога яхт вам поможет опытный яхтенный брокер Андрей Шестаков. На сегодняшний день компания Shestakov Yacht Sales Inc. имеет большое количество яхт в собственном списке продаж, а также тесно сотрудничает со всеми крупными яхтенными производителями по всему миру.

Для того чтобы купить яхту Salt Mine — SPENCER YACHTS а также проконсультироваться по любому вопросу связанному с покупкой, продажей, чартером яхт позвоните по телефону **+7(918)465-66-44**.

# ОГЛАВЛЕНИЕ

ОГЛАВЛЕНИЕ	2
ХАРАКТЕРИСТИКИ	3
Обзор	3
Основная информация	3
Размеры	3
Скорость, вместимость и масса	3
Размещение	4
Корпус и палуба	4
Информация о двигателе	4
ПОДРОБНОЕ ОПИСАНИЕ	5
ABOUT	5
SPECIFICATIONS	5
SALESMAN'S REMARKS	7
ABOUT THE BUILDER	7
EXCLUSIONS & DISCLAIMER	7
Исключения	8
Отказ от ответственности	8
ФОТОГРАФИИ	9
КОНТАКТЫ	27
Контактная информация	27
Телефоны	27
Время работы	27
Адрес	27

# ХАРАКТЕРИСТИКИ

## Обзор

The 43 Spencer was a leader in the successful evolution of the dependable and efficient Volvo IPS power into the recreational sport fishing. Known for a fantastic ride, economy and ease of operation Spencer Yachts hit all the marks with the 43. It is still unmatched in quality, design and fishability. *Salt Mine* is the nicest, best equipped 40 to 50-foot Express currently on the market today.

## Основная информация

**Тип судна:** Катер для спортивной рыбалки

**Модельный год:** 2007

**Год постройки:** 2007

**Страна:** United States

**Открытая палуба мостика:** Да

**Кубрик:** Да

## Размеры

**Длина общая:** 43' 0" (13.11m)

**Длина по ватерлинии:** 41' 0" (12.50m)

**Ширина:** 14' 6" (4.42m)

**Мин. осадка:** 3' 6" (1.07m)

## Скорость, вместимость и масса

**Крейс. скорость:** 28 Kts. (32 MPH)

**Крейсерская скорость поворота:** 3100 Kts.

**Макс. скорость:** 33 Kts. (38 MPH)

**Макс. скорость поворота:** 3450 Kts.

**Водоизмещение:** 40000 Pounds

**Чистый вес:** 30 Pounds

**Вместимость воды:** 125 Gallons

**Вместимость сточного бака:** 20 Gallons

**Объем топливного бака:** 635 Gallons

## Размещение

---

Всего кают: 2

Всего ком. состава: 1

## Корпус и палуба

---

Материал корпуса: Fiberglass

Отделка корпуса: Aluminum

## Информация о двигателе

---

Двигатели: 2

Производитель: Volvo

Модель: D6-435KA IPS600

Тип двигателя: Inboard

Тип топлива: Diesel

---

# ПОДРОБНОЕ ОПИСАНИЕ

---

## ABOUT

---

Entering the spacious cabin you find a comfortable settee and table to starboard with cabinets above and drawer storage on the raised sole. The attention to detail and joinery are excellent, the veneer is a semi-gloss finished exotic Anigre a light tan African heartwood.

- Master is forward with center lined queen • Single head with large shower • Second stateroom aft with twin bunks • L Shaped Settee with table • Bound carpet • Teak and holly sole

## SPECIFICATIONS

---

### GALLEY

- Corian counter top with molded sink • Ample cabinets and storage • Princess cooktop 2 burner • Microwave Magic Chef • Nor Cold Frig Freezer

### MASTER STATEROOM

- Queen berth center lined with storage • Hanging lockers cedar lined (2) • Drawer storage • Cabinets • TV Flat screen

### SECOND STATEROOM

- Twin bunks • Night stand • Drawer storage • Hanging lockers cedar lined (2) • Escape panel • Whisper wall system • TV flat screen

### HEAD

- Vanity lighted with mirror • Countertops Corian • Molded sink • Shower

### HELM DECK

The Helm is air conditioned and elevated for excellent visibility and just two steps from the cockpit. To starboard is a comfortable bench with custom stainless freezers. Forward of the console is an L-shaped bench with storage. • Console Electronics panel on gas rams • Console features storage with side access • Electronics panels • Helm pod teak • Stainless steering wheel • Stainless single lever controls • Helm chairs Release teak on 4" Stainless stanchions (2) • Enclosure Sea-Crylic Enclosure (bonded poly-carbonite) • Watermaker remote start and flush • Volvo Joy Stick • Volvo ECM panels

### HULL & DECK

The hull is constructed of 1" high-density Core-Cell foam molded into fiberglass sandwich with

epoxy resin and layered woven mat laid over an inverted male mold. The stringers are Corecell laminated and vacuum bagging techniques are used. Decks are WEST-system laminated. • Varnished teak toe railing • Anchor locker with ACR anchor - 600' line • Cockpit deck teak • Covering boards teak • LED cockpit lighting (blue) • LED underwater lights • Trim Tabs Lenco

## **ELECTRONICS & NAVIGATION**

The complete electronics and Audio Video system has been upgraded 2014. • GARMIN 8215 (2) with US charts • Garmin GMR 124 HD radar 12 KW 4 foot open array • Garmin GSD 26 sounder with chirp 3 KW • Garmin GHP 10 V autopilot • Airmar Transducer 3 KW chirp • Garmin Grid • Garmin VHF 300 AIS • Garmin VHF 300 • Garmin GMI 20 instrument display • Garmin GXM weather • Garmin quatix GPS watch • Flir vision M-324XP

**TOWER ELECTRONICS & NAVIGATION** • Garmin 8208 with US charts • Garmin VHF 100 • Audio Video • Fusion MS BT200 Bluetooth • Fusion MS-IP700i ipod • M10W5 Marine Sub Woofer 10" • M770-CCX • Fusion 4" speaker • Fusion MS-NRX200i Remote • Wet Sounds SYN 4 AMP • KVH Trac Vision M5 • Direct TV receiver

## **TOWER**

• Pipe-welders Tower • Helm Pod with electronics box • Graphite-fiber hardtop • Molded LED NAV lights • Molded overhead lights tricolor • Molded Quartz spreader lights • Tower deck • Graphite fiber buggy top • Steering • Controls • Volvo gauge package • Volvo IPS Joy Stick control

## **ELECTRICAL SYSTEM**

• Generator Master Volt 12 KW - upgraded 2014 • 240v/110v AC electric & 24v/12v DC • Panel Tronic • 50 amp shore power single • LED cabin lighting with phase dimmers • 24v automatic battery charger • Cable TV & phone inlet plugs • Charles Industries Iso-Boost 50 • Custom Battery boxes • Guest rotary switches • Batteries (replaced Nov.2015) • Galvanic isolators & voltage stepdown transformer

## **ENGINE & EQUIPMENT**

The future in recreational marine power, the IPS drive-system features underwater exhaust for a quiet smoke free operation at any speed. The control system has "sportfish mode" functionality for more control and quick response. Fully serviced with excellent service records available. Engine 1 Brand: VOLVO Year Built: 2007 Engine Model: IPS600B Engine Type: Inboard IPS Engine/Fuel Type: Diesel Location: Starboard Engine Hours: 2050 Engine(s) Total Power: 600 Engine 2 Brand:VOLVO Year Built: 2007 Engine Model: IPS600B Engine Type: Inboard IPS Engine/Fuel Type: Diesel Location: PORT Engine Hours: 2050 Engine(s) Total Power: 600

PERFORMANCE: RPM SPEED LOAD GPH 3100 28 KTS 70% 34 3450 33 KTS  
100% 45

- Racor 900/500 fuel system
- Fire Boy suppression system
- Lenco actuators
- Eskimo Ice Machine
- Watermaker Plus 600 GPD remote start and flush
- Raw Water pump
- DC salt water wash down pump
- DC fresh water wash down pump

## FISHING EQUIPMENT

• Release 130 lbs teak fighting chair • Rupp 3 X riggers with center rigger • Live well • Live well pump box • Live well quick connect port and starboard • Miya Epoch US-9 • 12 V Outlets • Transom Fishbox • Transom Tuna door • Cockpit Freezer • Insulated drink box (ice dump) • Bait prep

## SALESMAN'S REMARKS

Looking for a great performing express that is fun to fish, fully equipped, in turn key condition? Then *Salt Mine* is a must see. This captain maintained Spencer will exceed all of your expectations in performance and equipment with the Spencer ride and quality. She is priced well below the market. Don't miss this great opportunity. Call the listing broker direct for a convenient appointment to see this fantastic buying opportunity.

## ABOUT THE BUILDER

A family-owned boat building business since 1996, Spencer Yachts was founded by Paul Spencer. He grew up working as a mate and later captain for many years before deciding to try a new endeavor. His goal was to combine function and style with the classic "Carolina Build". The Spencer Yachts process involves two North Carolina facilities, one in Manns Harbour and one in Wanchese.

## EXCLUSIONS & DISCLAIMER

Exclusions:

- Owner's personal belongings
- Artwork
- Fishing equipment
- Vessel name

The Company offers the details of this vessel in good faith but cannot guarantee or warrant the accuracy of this information nor warrant the condition of the vessel. A buyer should instruct his agents, or his surveyors, to investigate such details as the buyer desires validated. Engine and Generator Hours are at the date of the listing and provided by the vessel owner for information purposes only. Any and all information should be verified by the potential buyer and his surveyor prior to acceptance.

This vessel is offered subject to prior sale, price change, or withdrawal without notice.

## **Исключения**

---

При продаже яхты исключаются личные вещи владельца.

## **Отказ от ответственности**

---

Компания предоставляет описание судна или яхты добросовестно, но не может гарантировать точность этой информации, а также не ручается за техническое состояние. Покупатель должен проинструктировать своих агентов или оценщиков исследовать представленную информацию более подробно, по собственному желанию. Продажа судна или яхты, изменение цены или снятие с продажи будет происходить без предварительного уведомления.



# ФОТОГРАФИИ

















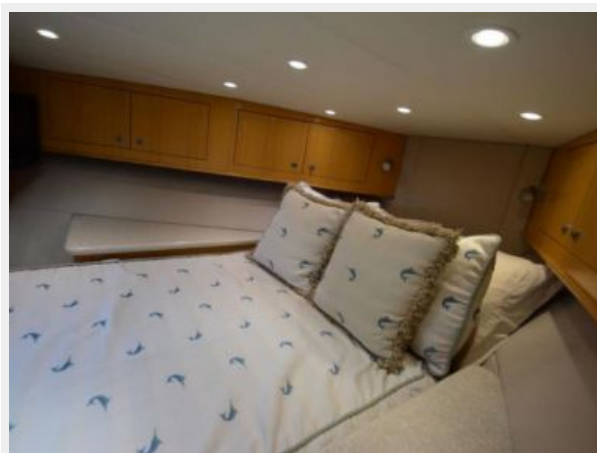




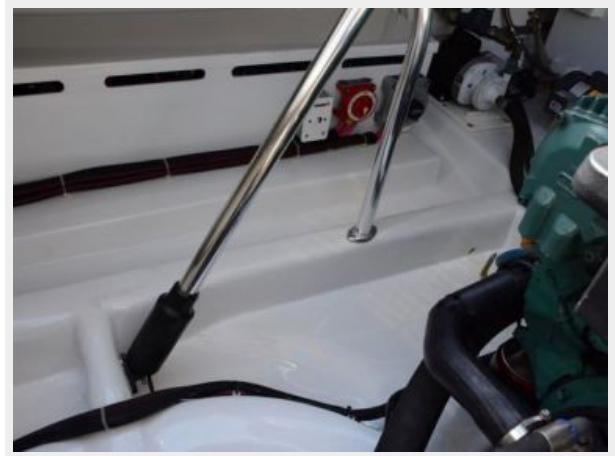








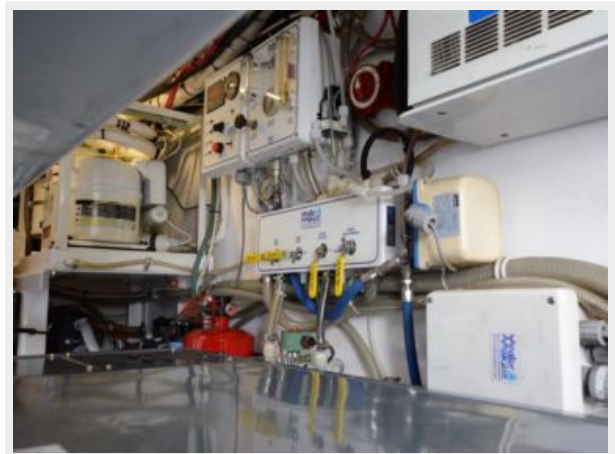
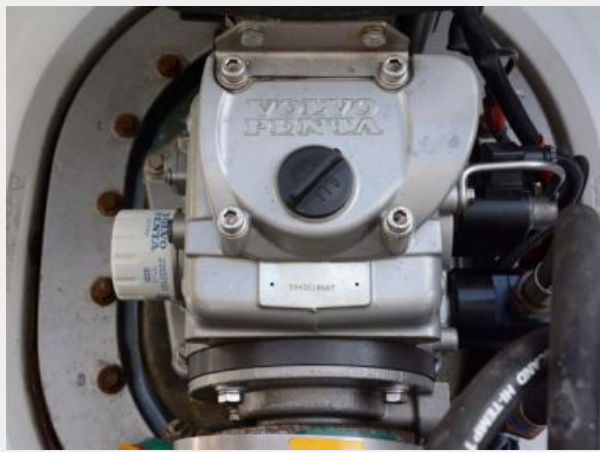












# КОНТАКТЫ

---

Андрей Шестаков (Andrey Shestakov) – ведущий яхтенный брокер отдела продаж яхт и судов компании Shestakov Yacht Sales Inc. Официальный представитель Shestakov Yacht Sales Inc. для русскоговорящих клиентов в центральном офисе компании в Майами/Форт Лодердейл/Флорида/США.

## Контактная информация

---

Email: [andrey@shestakovyachtsales.com](mailto:andrey@shestakovyachtsales.com)

Web: [shestakovyachtsales.com](http://shestakovyachtsales.com)

## Телефоны

---

Краснодарский край: **+7(918)465-66-44**

США, Майами, Флорида: **+1(954)274-4435**

## Время работы

---

Понедельник – Суббота: **9:00 - 21:00**  
EDT

Воскресенье: **Закрето**

## Адрес

---



Harbour Towne Marina, 850 NE 3rd St,  
STE 213, Dania, FL 33004