

GINA MARIE — PRINCESS VIKING



Builder: PRINCESS VIKING

Year Built: 2006

Model: Motor Yacht

Price: PRICE ON APPLICATION

Location: United States

LOA: 67' 0" (20.42m)

Beam: 17' 2" (5.23m)

Min Draft: 4' 6" (1.37m)

Cruise Speed: 25 Kts. (29 MPH)

Max Speed: 33 Kts. (38 MPH)

Our experienced yacht broker, Andrey Shestakov, will help you choose and buy a yacht that best suits your needs **Gina Marie — PRINCESS VIKING** from our catalogue. Presently, at Shestakov Yacht Sales Inc., we have a wide variety of yachts available on our sale's list. We also work in close contact with all the big yacht manufacturers from all over the world.

If you would like to buy a yacht **Gina Marie — PRINCESS VIKING** or would like help answering any questions concerning purchasing, selling or chartering a yacht, please call **+1(954)274-4435**

TABLE OF CONTENTS

TABLE OF CONTENTS	2
SPECIFICATIONS	5
Overview	5
Basic Information	5
Dimensions	5
Speed, Capacities and Weight	5
Accommodations	6
Hull and Deck Information	6
Engine Information	6
DETAILED INFORMATION	7
Accommodations	7
Salon/Dinette	7
Galley	7
Master Stateroom	8
Master Head	8
VIP Stateroom	9
VIP Head	9
Port Stateroom	10
Guest Head Port	10
Aft Cabin/Crew Quarters & Head	10
Laundry	10
Main Helm	11
Cockpit	11
Fly Bridge	12
Engines	13
Mechanical	13
Electrical	13
Construction	14

Exclusions	14
Disclaimer	14
PHOTOS	15
Salon	15
Salon	15
Salon	15
Helm	15
Companionway	16
Master Stateroom	16
Master Stateroom	16
Master Stateroom	16
Master Stateroom	17
Master Stateroom	17
Master Head	17
Master Head	17
VIP Forward Stateroom	18
VIP Forward Head	18
Guest Stateroom	18
Guest Head	18
Washer and Dryer	19
Aft Deck	19
Aft Deck	19
Aft Deck	19
Aft Deck	19
Flybridge	19
Flybridge	20
Flybridge	20
Flybridge	20
Flybridge	20

Flybridge	20
Flybridge	20
Flybridge	21
Flybridge	21
Flybridge	21
Flybridge	21
Flybridge	21
Flybridge	21
Flybridge	21
Flybridge	22
Hardtop	22
Engine Room	22
Engine Room	22
Engine Room	22
Forward Deck	22
Forward Deck	23
Starboard Profile	23
Port Profile	23
CONTACTS	24
Contact details	24
Telephones	24
Office hours	24
Address	24

SPECIFICATIONS

Overview

- Teak Replaced in 2014
- New Soft Goods on Fly Bridge in 2014
- Low Hours
- LED Lighting Throughout

This 67' Princess Viking Sport Cruiser offers a unique opportunity to buy a Viking Motor Yacht with low hours and all of the right options. She was built to offer uncompromised luxury and easy entertaining all with Viking prowess. Her twin CAT C-18 1015HP engines and a custom Fly Bridge hardtop complete a package that will allow for easy entertaining and easy cruising.

Basic Information

Category: Motor Yacht

Sub Category: Flybridge

Model Year: 2006

Year Built: 2006

Country: United States

Dimensions

LOA: 67' 0" (20.42m)

LWL: 55' 0" (16.76m)

Beam: 17' 2" (5.23m)

Min Draft: 4' 6" (1.37m)

Speed, Capacities and Weight

Cruise Speed: 25 Kts. (29 MPH)

Max Speed: 33 Kts. (38 MPH)

Displacement: 78400 Pounds

Water Capacity: 240 Gallons

Holding Tank: 75 Gallons

Fuel Capacity: 2160 Gallons

Accommodations

Total Cabins: 4

Total Heads: 4

Hull and Deck Information

Hull Material: Fiberglass

Engine Information

Engines: 2

Manufacturer: Caterpillar

Model: CAT C-18

Engine Type: Inboard

Fuel Type: Diesel

DETAILED INFORMATION

Accommodations

This 67 sleeps six people plus two crew with three staterooms and crew quarters.

Salon/Dinette

Sliding glass doors open into the vast main salon, which features a large u-shaped seating area that also doubles as storage. Directly across resides a love seat and entertainment center, with a wine chiller and floor to ceiling built-in bar. This allows for easy entertaining via the 32" sharp LCD and Bose surround sound system. There is also a spiral staircase that leads to the fly bridge for additional entertainment and control.

- 110V receptacles
- 316 stainless steel-framed curved triple sliding door to cockpit
- AM/FM stereo/CD
- Cocktail cabinet w/refrigerator, bottle and glass storage
- Clock and barometer
- Dinette, U-shaped w/table and two stools, stowed in VIP cabin
- Overhead lighting
- Stairs to master and guest staterooms
- Spiral staircase to fly bridge w/handrail
- Storage under salon seating
- Telephone outlet
- Tinted side and aft windows
- TV, 32" LCD and DVD
- U-shaped settee w/coffee table and double settee opposite

Galley

Continuing forward the salon leads into the galley and dining table. The galley features Corian countertops and plenty of storage. Overlooking the main salon, the four-burner Ceran NEFF stove sits above a built-in Panasonic microwave convection oven. The galley also features a stainless steel Franke sink with garbage disposal. Adjacent to the sink is the half sized Miele dishwasher. The loft style refrigerator and freezer are clad in matching stainless steel and built by LG. This yacht features unique storage throughout with a pull out drawer that holds at least 12 place settings. This galley can handle all of your entertaining needs with ample food storage, and cooking with ease.

The dining table is across from the galley and features a large U-shaped seating area with a large table. This enables a seamless transition between cooking a gourmet meal and providing

the space for formal and informal dining. With the adjacent spiral staircase to the fly bridge, the outdoor grill can also provide another avenue for entertaining.

- Duplex GFI receptacles
- Avonite countertop
- Dishwasher
- Drawers and storage cabinets
- Electric range
- Electric side window to port adjacent to dinette
- Exhaust fan
- Glass partition forward and aft with opaque/clear electronic control
- Icemaker
- Microwave/convection oven
- Overhead lighting
- Timber sole
- Waste disposal

Master Stateroom

Aft through the landing is the master stateroom that opens into a vast area with private head and king-sized bed. Flanking the bed are nightstands and reading lights. Either side of the room is a loveseat and large vanity or desk with large windows. The storage includes a large floor to ceiling hanging closet with built in dresser drawers, and cabinets on either side of the room. There is a large built-in Sharp LCD television and speaker system. The private master head includes a walk in shower with teak seating and a large medicine cabinet over the sink. More storage is located under the sink and bathroom countertop.

- 110V receptacles
- AM/FM stereo/CD/DVD
- Dressing table and stool
- En suite head
- Hanging locker
- Large double bed w/drawers below
- Large vertical penlights (8)
- Mirror
- Night stands (2)
- Overhead and reading lights
- Settee
- Storage drawers and cabinets
- TV, 20" LCD

Master Head

- Large stall shower
- Mirrors
- Opening portlight
- Overhead lighting
- Sink
- Storage lockers
- Teak sole
- Vacuflush head

VIP Stateroom

The VIP stateroom is forward and offers a queen sized bed and private head. The private head features a large enclosed shower with teak inlays and Sealand head. There is storage both over the vanity and below, with full-sized dressing mirror. This stateroom also features a hanging closet as well as a desk that doubles as a vanity. There is ample storage throughout and entertainment comes via a Sharp LCD TV and built-in stereo speakers.

- 110V receptacles
- Deck hatch w/screen and blind
- En suite head
- Hanging locker w/shelves
- Large double bed w/drawers below
- Opening port lights
- Overhead and reading lights
- Overhead lockers outboard
- Vanity w/mirror and storage

VIP Head

- Avonite countertop
- Duplex GFI receptacle
- Exhaust fan
- Mirror
- Opening portlight
- Overhead lighting
- Sink
- Stall shower
- Storage lockers
- Teak sole
- Vacuflush head

Port Stateroom

Forward, a staircase leads to the day head that features an enclosed shower with teak seating and a Sealand head. The day head also opens through a private entrance into the first stateroom, which features two twin beds. Storage can be found with a hanging closet, under the beds, and on the bulkhead. This stateroom also features a Sharp 12' LCD television and stereo sound.

- 110V receptacles
- En suite head
- Hanging locker w/shelves
- Night stand w/storage
- Opening portlights
- Overhead and reading lights
- Two full-size single berths w/storage

Guest Head Port

- Access from companionway and port stateroom
- Avonite countertop
- Duplex GFI receptacle
- Exhaust fan
- Mirror
- Opening portlight
- Overhead lighting
- Port head also serves as day head
- Sink
- Stall shower
- Storage lockers
- Teak sole
- Vacuflush head

Aft Cabin/Crew Quarters & Head

Access via hatch in base of molded cockpit seating

- Crew head w/vacuflush head, exhaust fan, stall shower and sink
- Hanging and storage lockers
- Opening portlights
- Overhead and reading lights

Laundry

The landing, which connects all three staterooms, provides a large closet with shelves to store linens and conceals the full-size Bosch Axxis washer and dryer.

- Located off lower accommodation companionway
- Linen storage
- Washer/dryer

Main Helm

- 316 stainless steel-framed windshield w/clear glass
- AC/DC control panel
- Alarms, audible/visual
- Anchor windlass remote control
- Autopilot
- Bow thruster control
- Burr elm instrument panel
- Chart table w/storage
- Compass
- Depth sounder
- Engine controls, electronic w/synchronizers
- Full engine instrumentation
- GPS/chartplotter/radar 48NM
- GPS interfaced w/radar and autopilot
- Helm seat and companion seat, adjustable
- Loudhailer
- Rudder angle indicator
- Searchlight control
- Sliding door to starboard side deck
- Speed log
- Tilt steering wheel
- Trim tab controls
- VHF radio
- Windshield cover
- Windshield wipers (3), variable speed w/washers

Cockpit

The cockpit features two chairs and a pilot door.

- Access to side decks
- Bathing platform, extended w/swim ladder
- Cockpit cover

- Cockpit lighting
- Cockpit speakers w/amplifier
- Docking windlasses, electric
- Dockside water inlet w/pressure reducing valve
- Side boarding gates
- Engine room and lazarette access
- Shower, hot/cold
- Stereo speakers
- Storage lockers
- Transom doors (2)
- Upholstered seating

Fly Bridge

The Fly Bridge, which is accessed via the staircase in the main salon or the aft deck, has full control with an array of instruments. The rest of the bridge is focused on entertaining with a built in grill and seating all along the starboard side. The bridge also features a built in refrigerator or cooler and sink. The dining table can also be used as a sun pad. Aft resides a davit and storage for a jet ski or tender. The bridge is enclosed in removable EZ2CY enclosure. All of this is easily covered in custom covers to protect the seating and instruments.

- Searchlight control
- Speed log
- Stereo speakers
- Tilt steering wheel
- Trim tab controls
- U-shaped settee w/table-sunpad
- VHF radio
- Wet bar w/refrigerated cool box, sink and grill
- Windshield
- Access from salon and cockpit
- Alarms, audible/visual
- Anchor windlass remote control
- Autopilot
- Bow thruster control
- Compass
- Console and seat covers
- Davit (1880 lb. capacity). Can be extended to service bathing platform
- Deck level lighting
- Depth sounder
- Engine controls, electronic w/synchronizers
- Engine instrumentation
- Helm and companion seat, adjustable

- Rudder angle indicator

Engines

- Twin CAT C-18 1015HP

Mechanical

- Acoustical insulation
- Air-conditioning, zoned w/reverse cycle heat
- Bilge pumps, automatic and manual
- Bow thruster (11 hp) w/dual station controls
- Contaminated fuel warning system
- Drip less shaft logs
- Engine room blowers
- Fire protection system, automatic and manual
- Fuel filters, high-capacity duplex w/water trap and change over valve
- Fuel tanks, port and starboard in N4 marine grade alloy
- High volume air intakes
- Holding tank, 75 gals w/dockside and overboard pump out
- Oil change system for engines, transmissions and generator
- Power assisted hydraulic steering system
- Propellers, 5-bladed
- Propeller shafts, Temet
- Remote fuel shut-offs
- Rudders, high-speed
- Water-cooled exhaust mufflers
- Water-flow failure light and alarm at fly bridge and main helm
- Water heater
- Water pump, automatic
- Water tank w/gauge

Electrical

- 50 amp/240V dockside services (2)
- 110V receptacles
- Anchor windlass
- Batteries, heavy duty
- Battery charger, 105 amps total
- Bonding system
- Central vacuum system

- Circuit breakers on all circuits
- Engine room lighting
- Generator 21.5kW/60Hz
- Generator gauge package
- Horns, twin electric
- Isolation transformers (2)
- Navigation/running lights
- Neutral safety switch for engine controls
- Polarity check system
- Remote battery master switches
- Searchlight, twin beam
- Shore cable inlets, 1-1 and phone
- TV antenna

Construction

- Bulwarks
- Deep "V" hull with molded spray rails
- Engine beds integrally molded with hull
- Hand-laid fiberglass construction
- Heavy-duty rub rails
- Integrally bonded stringer system
- EPG gelcoat and DCPD resin
- Molded non-skid surface's on side decks, fly bridge, and foredeck
- Teak laid cockpit, bathing platform, and stairs

Exclusions

Owner's personal belongings.

Disclaimer

The Company offers the details of this vessel or yacht in good faith but cannot guarantee or warrant the accuracy of this information nor warrant the condition of the vessel. A buyer should instruct his representatives, agents, or his surveyors, to investigate such details as the buyer desires validated. This vessel or yacht is offered subject to prior sale, price change, or withdrawal without notice.

PHOTOS

Salon



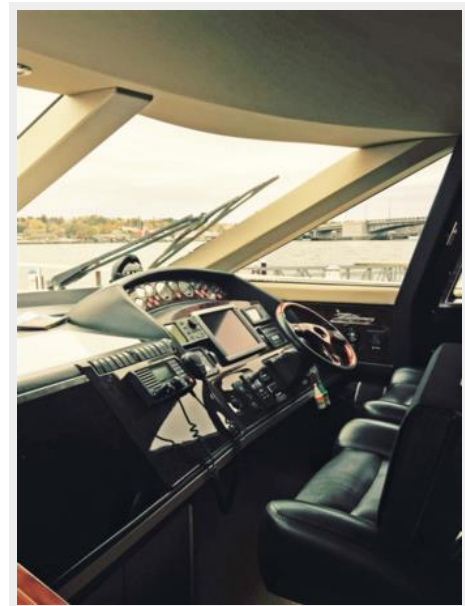
Salon



Salon



Helm



Companionway



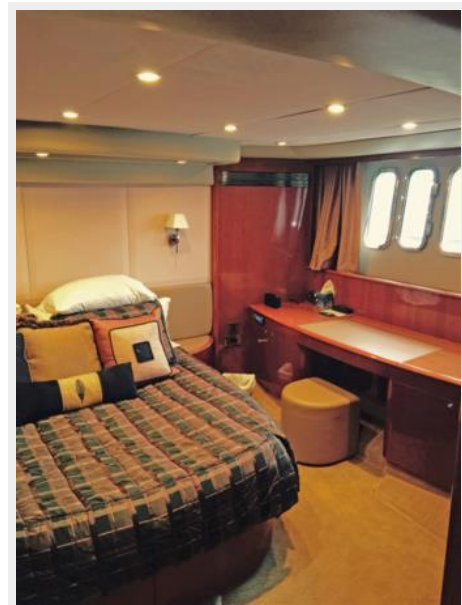
Master Stateroom



Master Stateroom



Master Stateroom



Master Stateroom



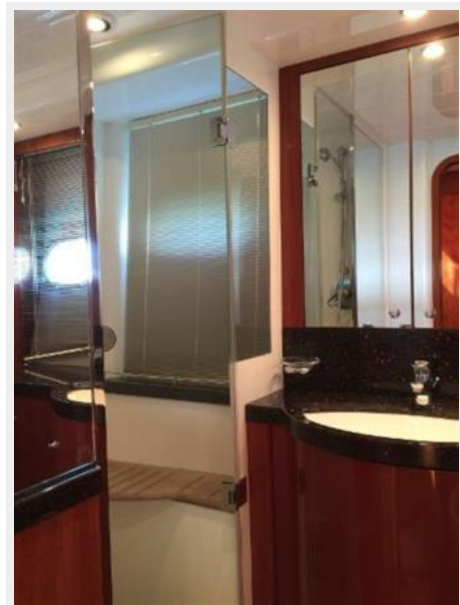
Master Stateroom



Master Head



Master Head



VIP Forward Stateroom



VIP Forward Head



Guest Stateroom



Guest Head



Washer and Dryer



Aft Deck



Aft Deck



Aft Deck



Aft Deck



Flybridge



Flybridge



Flybridge



Flybridge



Flybridge



Flybridge



Flybridge



Flybridge



Flybridge



Flybridge



Flybridge



Flybridge



Flybridge



Flybridge



Hardtop



Engine Room



Engine Room



Engine Room



Forward Deck



Forward Deck



Starboard Profile



Port Profile



CONTACTS

Andrey Shestakov, leading yacht broker of the sales department of Shestakov Yacht Sales Inc. Shestakov Yacht Sales Inc., the official representative of the Miami/Fort Lauderdale FL headquarters.

Contact details

Email: andrey@shestakovyachtsales.com

Web: shestakovyachtsales.com/en/

Telephones

USA: +1(954)274-4435

Office hours

Monday – Saturday: **9:00 - 21:00** EDT

Sunday: **closed**

Address



Harbour Towne Marina, 850 NE 3rd St,
STE 213, Dania, FL 33004