

BARTENDER — TANSU YACHTS



Builder: [Tansu Yachts](#)

Year Built: 2011

Model: Motor Yacht

Price: PRICE ON APPLICATION

Location: Italy

LOA: 119' 6" (36.40m)

Beam: 24' 4" (7.40m)

Min Draft: 7' 11" (2.40m)

Cruise Speed: 12 Kts. (14 MPH)

Max Speed: 16 Kts. (18 MPH)

Our experienced yacht broker, Andrey Shestakov, will help you choose and buy a yacht that best suits your needs **BARTENDER — Tansu Yachts** from our catalogue. Presently, at Shestakov Yacht Sales Inc., we have a wide variety of yachts available on our sale's list. We also work in close contact with all the big yacht manufacturers from all over the world.

If you would like to buy a yacht **BARTENDER — Tansu Yachts** or would like help answering any questions concerning purchasing, selling or chartering a yacht, please call **+1(954)274-4435**

TABLE OF CONTENTS

TABLE OF CONTENTS	2
SPECIFICATIONS	3
Basic Information	3
Dimensions	3
Speed, Capacities and Weight	3
Accommodations	3
Hull and Deck Information	3
Engine Information	4
DETAILED INFORMATION	5
Detailed Description	5
Exclusions	9
Disclaimer	9
PHOTOS	10
CONTACTS	13
Contact details	13
Telephones	13
Office hours	13
Address	13

SPECIFICATIONS

Basic Information

Category: Motor Yacht

Model Year: 2011

Year Built: 2011

Country: Italy

Dimensions

LOA: 119' 6" (36.40m)

LWL: 114' 10" (35.00m)

Beam: 24' 4" (7.40m)

Min Draft: 7' 11" (2.40m)

Speed, Capacities and Weight

Cruise Speed: 12 Kts. (14 MPH)

Cruise Speed RPM: 1720 Kts.

Cruise Speed Range: 2100

Max Speed: 16 Kts. (18 MPH)

Max Speed RPM: 2136 Kts.

Max Speed Range: 1354 Kts.

Displacement: 454000 Pounds

Gross Tonnage: 225 Pounds

Water Capacity: 3170.064624 Gallons

Fuel Capacity: 11095.226184 Gallons

Accommodations

Total Cabins: 5

Sleeps: 10

Crew Cabin: 4

Crew Sleeps: 7

Hull and Deck Information

Hull Material: Steel

Deck Material: Teak

Exterior Designer: HRH Risa Tansu

Interior Designer: B&B Italia

Engine Information

Engines: 2

Manufacturer: Caterpillar

DETAILED INFORMATION

Detailed Description

1. MAIN CHARACTERISTICS

TYPE	Full Displacement Expedition Motor Yacht
BUILDER	Tansu Yachts
NAVAL ARCHITECT	HRH RisaTansu
INTERIOR DESIGN	B&B Italia
YEAR	2011
CLASSIFICATION	RINA Class + MCA LY2
CONSTRUCTION	Steel Hull, Aluminium Superstructure, Teak Decks
CREW	7
FLAG	Malta
ENGINES	2 x 1,300 Hp CAT C 32 970 kW
GT	225
NT	67
DISPLACEMENT	227 tons

2. DIMENSIONS

LOA	36.40m / 119'5"
LWL	35.00m / 114'9"
BEAM	7.40m / 24'3"
DRAFT	2.40m / 7'10"

3. SPEED & RANGE UNDER POWER

MAXIMUM SPEED	15.8 knots; 490 litres per hour @ 2,136 rpm
CRUISING SPEED	12.5 knots; 250 litres per hour @ 1,720 rpm
ECONOMICAL SPEED	10 knots; 150 litres per hour @ 1,400 rpm
RANGE	3,000 nm @ 10 knots 2,100 nm @ 12.5 knots 1,354 nm @ 15.8 knots

4. CAPACITIES

ACCOMMODATION	10 x Guests in 5 cabins 1 x Master, 2 x Double, 2 x Twin
CREW	7 x Crew in 4 cabins
FUEL	42,000 litres / 11,095 US gallons
FRESH WATER	12,000 litres / 3,170 US gallons

WATER MAKER	195 litres per hour / 51.5 US gallons per hour
DIRTY OIL	300 litres / 79.25 US gallons
GREY/BLACK WATER	9,200 litres / 2,430 US gallons

5. MECHANICAL EQUIPMENT

ENGINES	2 x 1,300 Hp CAT C 32; 970 kW
ENGINE HOURS	Sep-15 Starboard: 1,997 hours Port: 2,001 hours
GEARBOX	ZF
PROPELLERS	Radice
STEERING	Data hydraulic system DSS 2 x 50
EMERGENCY STEERING	Data hydraulic system
STABILISERS	Trac Zero Speed 440
BOWTHRUSTER	1 x Trac 30 Hp
PUMPS/VALVES/FANS	G&R
GENERATORS/ELECTRICITY	2 x 50 kW Northern Lights; 1,500 rpm; 25 litres per day
GENERATOR HOURS	No. 1: 4,260 hours No. 2: 3,370 hours
SHORE POWER	ASEA AC36-3 Tri Phase 50Hz
BATTERIES	Gel batteries
MAIN ENGINE START	8 x HAZE
GENERATOR START	8 x HAZE
CHARGERS	Dolphin
EMERGENCY	6 x Master Volt
AIR CONDITIONING	Marine Air, 10 x Fresh air ventilation system
AIR COMPRESSOR	Jun Air 400V 50 Hz
WATER MAKER	2 x Aquamiser 195 litres/hour
SEWAGE SYSTEM	Hamann
SOUND/VIBRATION	Soundown sound/vibration control
WATERMAKER	Aquamiser (4,680 litres/day)
TOILET SYSTEM	Hamann
SEWAGE SYSTEM	Hamann
FUEL SEPARATOR	Alfa Laval MIB 303

6. NAVIGATION EQUIPMENT

NAVIGATION/ELECTRONICS	Raymarine
-------------------------------	-----------

COMPASS	Plastimo Offshore 135
AUTOMATIC PILOT	Raymarine ST70+
ECHO SOUNDER	Raymarine ST70+
RADAR	Raymarine
GPS	Raymarine ST
CHART PLOTTER	Raymarine
NAVTEX	Macmurdo Smartfind gmdss
WIND INSTRUMENTS	Raymarine
SEARCHLIGHTS	Sanshin HRX-150
NIGHT VISION SYSTEM	FLIR
HELM CHAIRS	Crown Ltd

7. COMMUNICATION EQUIPMENT

VHF	1 x Raymarine Ray218e Sailor RT5022 4 x Icon handheld
ICOM	2 x GMDSS handheld
LOUDHAILER	Kahlenberg
PRINTER	Canon MP 282

8. DECK EQUIPMENT

AFT WARPING CAPSTANS	2 x Data DZC2200
ANCHORS	2 x Data DZC2200
ANCHOR CHAINS	2 x 120m
BOAT CRANE & DAVITS	2 x Marquipt 2,000 lb
PASSERELLE	Opacmare
DOORS AND HATCHES	Freeman
ACCOMODATION LADDER	Manual
SIDE BOARDING GANGWAY	Opacmare type 1202

1. ENTERTAINMENT EQUIPMENT

- 4 x Samsung TVs in Saloon, Master & Guest cabins
- 1 x DVD Receiver C717
- iPod station
- SONOS Central Ships Audio

2. GALLEY & LAUNDRY EQUIPMENT

GALLEY

- 2 x Zanussi Oven ACF3E
- 1 x Miele K9122

- 1 x Miele Freezer F9122UI-2
- 1 x Hoshizaki Icemaker
- 1 x Zanussi Dishwasher ZUCAID 502054
- 1 x Sub-Zero Winecooler ICB427GRH

CREW

- 1 x LG Microwave
- 1 x Miele Washing Machine PT5135C
- 1 x Miele Dryer PW5065
- 1 x Tefal generator steamer

1. INTERIOR EQUIPMENT

INTERIOR/EXTERIOR LIGHTS Cantalupi

MOBILE FURNITURE B&B Italia/Vitra

DECORATIVE LIGHTING Tobias Grau

1. SECURITY & SAFETY EQUIPMENT

SAFETY

- 1 x Liferrafts 20 person, Viking
- 4 x Liferings
- 1 x EPIRBS Mcurdo
- 20 x Flares

SECURITY

- 3 x CCTV cameras on lower deck, port, starboard & stern
- 1 x Monitor on Bridge
- 2 x Ships' safes

FIRE FIGHTING

- 17 x Detectors
- 23 x Fire extinguishers
- 2 x Portable CO2 Extinguishers in Engine room & Lazarette
- 4 x Seawater firefighting in Bow, Stern, Crew mess & Guest quarters
- 2 x Asbestos Firefighting Suits on Bridge

2. TENDER

- 1 x 6.36 m RIB 115 Hp 4-stroke outboard

3. COMMENTS

WINNER of the Showboats Design Awards 2012 - Interior Design Award: Displacement Motor Yachts 100' - 199'

FINALIST in the Showboats Design Awards 2012 - Exterior Design Award: Displacement Motor Yachts 100' - 199'

Exclusions

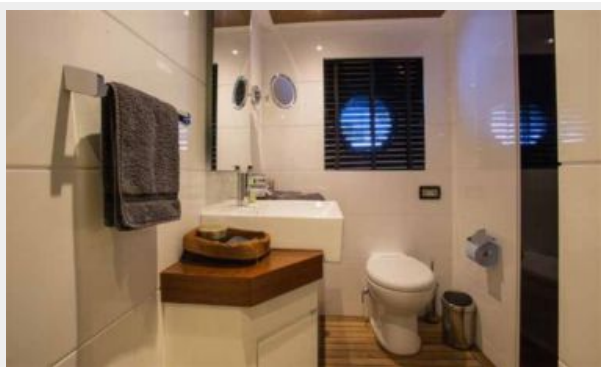
Owner's personal belongings.

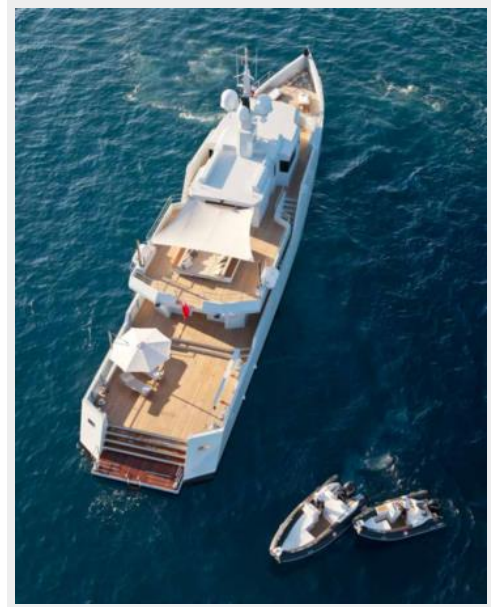
Disclaimer

The Company offers the details of this vessel or yacht in good faith but cannot guarantee or warrant the accuracy of this information nor warrant the condition of the vessel. A buyer should instruct his representatives, agents, or his surveyors, to investigate such details as the buyer desires validated. This vessel or yacht is offered subject to prior sale, price change, or withdrawal without notice.

PHOTOS







CONTACTS

Andrey Shestakov, leading yacht broker of the sales department of Shestakov Yacht Sales Inc. Shestakov Yacht Sales Inc., the official representative of the Miami/Fort Lauderdale FL headquarters.

Contact details

Email: andrey@shestakovyachtsales.com

Web: shestakovyachtsales.com/en/

Telephones

USA: +1(954)274-4435

Office hours

Monday – Saturday: **9:00 - 21:00** EDT

Sunday: **closed**

Address



Harbour Towne Marina, 850 NE 3rd St,
STE 213, Dania, FL 33004