

2013 PERSHING — PERSHING



Builder: PERSHING

Year Built: 2013

Model: Mega Yacht

Price: PRICE ON APPLICATION

Location: United States

LOA: 82' 0" (24.99m)

Beam: 18' 1" (5.51m)

Max Draft: 4' 7" (1.40m)

Cruise Speed: 38 Kts. (44 MPH)

Max Speed: 45 Kts. (52 MPH)

Our experienced yacht broker, Andrey Shestakov, will help you choose and buy a yacht that best suits your needs 2013 Pershing — PERSHING from our catalogue. Presently, at Shestakov Yacht Sales Inc., we have a wide variety of yachts available on our sale's list. We also work in close contact with all the big yacht manufacturers from all over the world.

If you would like to buy a yacht 2013 Pershing — PERSHING or would like help answering any questions concerning purchasing, selling or chartering a yacht, please call +1(954)274-4435

TABLE OF CONTENTS

TABLE OF CONTENTS	2
SPECIFICATIONS	3
Basic Information	3
Dimensions	3
Speed, Capacities and Weight	3
Accommodations	3
Hull and Deck Information	3
Engine Information	4
DETAILED INFORMATION	5
Features	5
Accessories	5
Exclusions	5
Disclaimer	5
PHOTOS	6
CONTACTS	22
Contact details	22
Telephones	22
Office hours	22
Address	22

SPECIFICATIONS

Basic Information

Category: Mega Yacht

Model Year: 2013

Year Built: 2013

Country: United States

Cockpit: Yes

Dimensions

LOA: 82' 0" (24.99m)

Beam: 18' 1" (5.51m)

Max Draft: 4' 7" (1.40m)

Speed, Capacities and Weight

Cruise Speed: 38 Kts. (44 MPH)

Max Speed: 45 Kts. (52 MPH)

Displacement: 64 Pounds

Water Capacity: 343 Gallons

Fuel Capacity: 1572 Gallons

Accommodations

Total Cabins: 3

Total Heads: 4

Crew Cabin: 2

Crew Heads: 1

Hull and Deck Information

Hull Material: Fiberglass

Engine Information

Engines: 2

Manufacturer: MTU

Engine Type: Inboard

Fuel Type: Diesel

DETAILED INFORMATION

Features

Three Stateroom Layout Separate crew area with 2 cabins & 1 head Garage A/C 72,000 btu 2 20w generators (1682 hrs, 1463 hrs) Hideway glass aft door Telescopic gangway Convertible cockpit table to sun pad Front external dinette Front hard top Upper sun deck with sun pad & 2 lounges 2 Electric side doors for external access Furniture Timber Dark Wood

Accessories

Hydraulic stern thruster (28 hp, 20.9 kw) Mooring cleats on bathing platform Safety equipment for 16 people (2 8p liferafts, 16 life jackets) Electric fabric roll curtains in guest staterooms port & starboard Electric fabric roll curtains in VIP stateroom Electric motion black out curtains in all staterooms except crew I-Pod docking station in all staterooms Ice maker Underwater lights under bathing platform Super Tropic A/C 150000 BTU Folding bed in guest stateroom Windshield cover Microwave oven External LED lights at bow and sun deck area Side opening pulpit Second helm station with seating on sun deck Double light beam with electronic control Additional boiler 15' for master stateroom with by pass Additional cleats in middle of the boat Aft camera Electric backrest in sun deck Decoders in all cabins Bed linen sets Upper salon fridge 3 cabin layout with dinette Painted fiberglass dinette table in bow Soap dish & shampoo holders in all showers Fume' cover for electric panel Fresh water tap in anchors locker Pilot back rest in upper sun deck Cupboard in master bath instead of bidet Nautic maps holder Main helm glass holder Salon furniture Salon coffee table Salon bar unit Salon rug 3 Bar stools Furuno navigation Silvertex cushions Marble bar counter top Longer table & bench in cockpit Sliding bathroom door in master stateroom Mosaic Bisazza in master stateroom Mosaic Bisazza in Vip and guest bathrooms Non skid paint on garage floor Large mirror in master stateroom wardrobe 55" TV in lower dinette (US version) A/V in lower dinette for US version Additional spot lights over main helm Besenzoni helm seats Courtesy lights in master stateroom

Exclusions

Owner's personal belongings.

Disclaimer

The Company offers the details of this vessel or yacht in good faith but cannot guarantee or warrant the accuracy of this information nor warrant the condition of the vessel. A buyer should instruct his representatives, agents, or his surveyors, to investigate such details as the buyer desires validated. This vessel or yacht is offered subject to prior sale, price change, or withdrawal without notice.

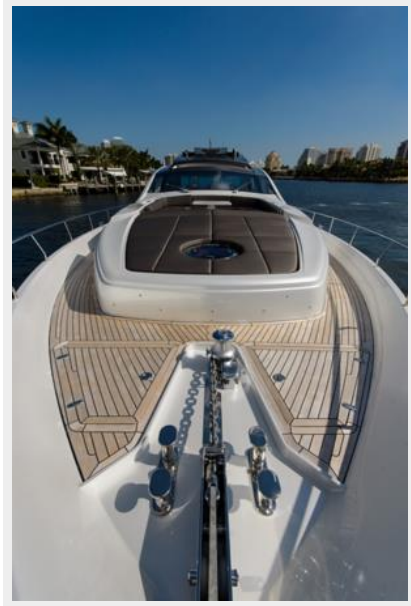
PHOTOS





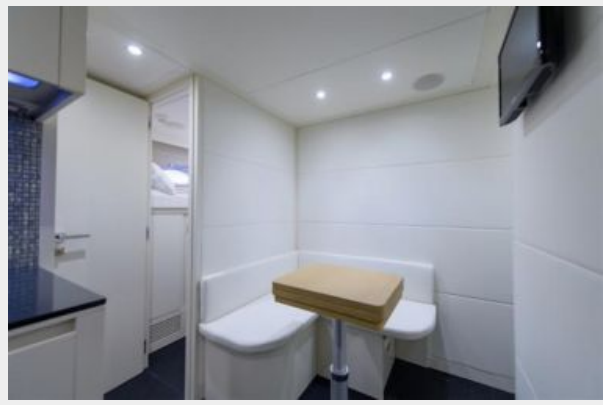






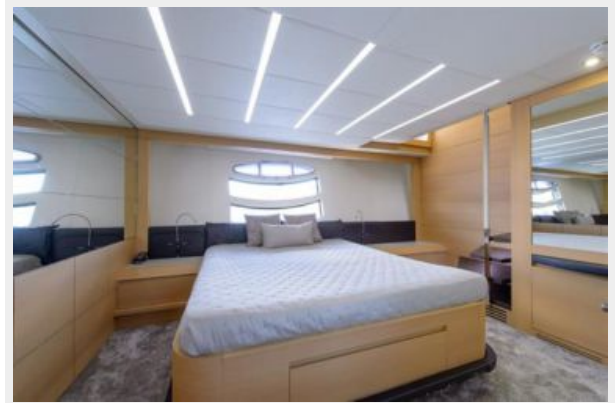


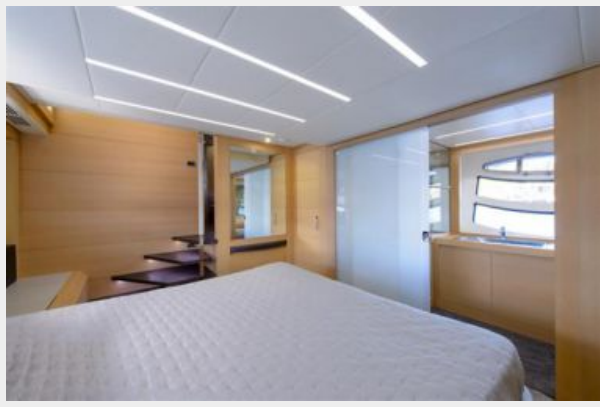








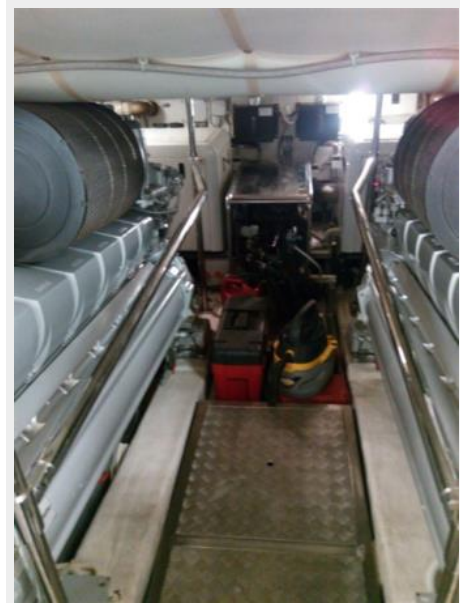












CONTACTS

Andrey Shestakov, leading yacht broker of the sales department of Shestakov Yacht Sales Inc. Shestakov Yacht Sales Inc., the official representative of the Miami/Fort Lauderdale FL headquarters.

Contact details

Email: andrey@shestakovyachtsales.com

Web: shestakovyachtsales.com/en/

Telephones

USA: +1(954)274-4435

Office hours

Monday – Saturday: **9:00 - 21:00** EDT

Sunday: **closed**

Address



Harbour Towne Marina, 850 NE 3rd St,
STE 213, Dania, FL 33004