

AKTOBE — ALFAMARINE



Builder: ALFAMARINE

Year Built: 2003

Model: Motor Yacht

Price: PRICE ON APPLICATION

Location: Spain

LOA: 139' 6" (42.50m)

Beam: 28' 7" (8.70m)

Max Draft: 8' 3" (2.50m)

Our experienced yacht broker, Andrey Shestakov, will help you choose and buy a yacht that best suits your needs **Aktobe — ALFAMARINE** from our catalogue. Presently, at Shestakov Yacht Sales Inc., we have a wide variety of yachts available on our sale's list. We also work in close contact with all the big yacht manufacturers from all over the world.

If you would like to buy a yacht **Aktobe — ALFAMARINE** or would like help answering any questions concerning purchasing, selling or chartering a yacht, please call **+1(954)274-4435**

TABLE OF CONTENTS

TABLE OF CONTENTS	2
SPECIFICATIONS	3
Overview	3
Basic Information	3
Dimensions	3
Speed, Capacities and Weight	3
Accommodations	4
Hull and Deck Information	4
Engine Information	4
PHOTOS	5
CONTACTS	8
Contact details	8
Telephones	8
Office hours	8
Address	8

SPECIFICATIONS

Overview

A high performance superyacht designed by Andrea Bacigalupois, built to MCA compliance. Her interior is warm and welcoming with rich colours in fabrics and soft wood finishes. Cruising at 14 knots accommodating 16 berths in 8 cabins. Offered in turn key condition and ready for her new owner. She would be well suited to a refit job and ultimately to charter work. Very seriously for sale and offers are encouraged.

Basic Information

Category: Motor Yacht

Sub Category: Tri-Deck

Model Year: 2003

Year Built: 2003

Refit Year: 2009

Country: Spain

Fly Bridge: Yes

Dimensions

LOA: 139' 6" (42.50m)

Beam: 28' 7" (8.70m)

Max Draft: 8' 3" (2.50m)

Speed, Capacities and Weight

Displacement: 518086.3157 Pounds

Water Capacity: 1849.204364 Gallons

Holding Tank: 1320.86026 Gallons

Fuel Capacity: 7925.16156 Gallons

Accommodations

Total Cabins: 8

Total Berths: 16

Sleeps: 16

Total Heads: 9

Captain Cabin: True

Crew Cabin: 5

Crew Berths: 10

Crew Sleeps: 12

Hull and Deck Information

Hull Material: Aluminum

Deck Material: Teak

Hull Color: White

Hull Designer: Andrea Bacigalupo

Exterior Designer: Jim Collins

Interior Designer: Jim Collins

Engine Information

Engines: 2

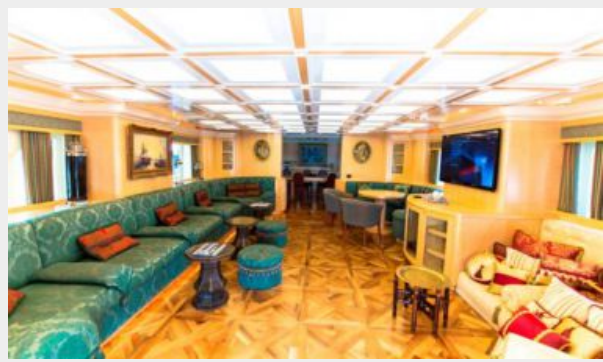
Manufacturer: MTU

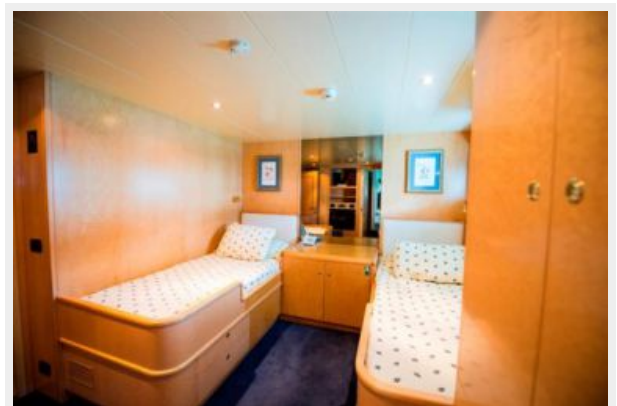
Model: 12V 4000 M90 ME

Engine Type: Inboard

Fuel Type: Diesel

PHOTOS







CONTACTS

Andrey Shestakov, leading yacht broker of the sales department of Shestakov Yacht Sales Inc. Shestakov Yacht Sales Inc., the official representative of the Miami/Fort Lauderdale FL headquarters.

Contact details

Email: andrey@shestakovyachtsales.com

Web: shestakovyachtsales.com/en/

Telephones

USA: +1(954)274-4435

Office hours

Monday – Saturday: **9:00 - 21:00** EDT

Sunday: **closed**

Address



Harbour Towne Marina, 850 NE 3rd St,
STE 213, Dania, FL 33004