

ELENA NUEVE — BENETTI



Builder: BENETTI

Year Built: 2007

Model: Motor Yacht

Price: PRICE ON APPLICATION

Location: Spain

LOA: 120' 1" (36.6mm)

Beam: 25.91

Max Draft: 6' 5" (1.95mm)

Cruise Speed: 15 Knots Kts. (17 MPH)

Max Speed: 16 Knots Kts. (18 MPH)

Our experienced yacht broker, Andrey Shestakov, will help you choose and buy a yacht that best suits your needs **Elena Nueve — BENETTI** from our catalogue. Presently, at Shestakov Yacht Sales Inc., we have a wide variety of yachts available on our sale's list. We also work in close contact with all the big yacht manufacturers from all over the world.

If you would like to buy a yacht **Elena Nueve — BENETTI** or would like help answering any questions concerning purchasing, selling or chartering a yacht, please call **+1(954)274-4435**

TABLE OF CONTENTS

| | |
|------------------------------|---|
| TABLE OF CONTENTS | 2 |
| SPECIFICATIONS | 3 |
| Overview | 3 |
| Basic Information | 3 |
| Dimensions | 3 |
| Speed, Capacities and Weight | 3 |
| Accommodations | 4 |
| Hull and Deck Information | 4 |
| Engine Information | 4 |
| PHOTOS | 5 |
| CONTACTS | 9 |
| Contact details | 9 |
| Telephones | 9 |
| Office hours | 9 |
| Address | 9 |

SPECIFICATIONS

Overview

2018 interior refit see the new photographs!

For her impressionable size, Elena Nueve offers her guests a concise range of advanced luxurious amenities to ensure the most pleasurable experience on board. Her three large decks are equipped with the best and latest to include an on deck Jacuzzi, state of the art audio-visual equipment, full outdoor bar, two barbecues and countless sunbathing areas, not to mention 8m Avon Seasport zodiac tender and exceptional toys will ensure friends and family are kept diverted.

She sleeps up to 12 guests in five sumptuous en suite staterooms to include a full-beam master suite, two double staterooms, two twin staterooms and two Pullman beds

Basic Information

Category: Motor Yacht

Sub Category: Motor Yacht

Model Year: 2007

Year Built: 2007

Country: Spain

Dimensions

LOA: 120' 1" (36.6mm)

Beam: 25.91

Max Draft: 6' 5" (1.95mm)

Speed, Capacities and Weight

Cruise Speed: 15 Knots Kts. (17 MPH)

Cruise Speed Range: 3000

Max Speed: 16 Knots Kts. (18 MPH)

Gross Tonnage: 299 Pounds

Water Capacity: 8200 Gallons

Fuel Capacity: 11623.57 Gal Gallons

Accommodations

Total Cabins: 5

Hull and Deck Information

Hull Material: Fiberglass

Hull Color: White

Exterior Designer: Stefano Righini Design **Interior Designer:** Francios Zuretti

Engine Information

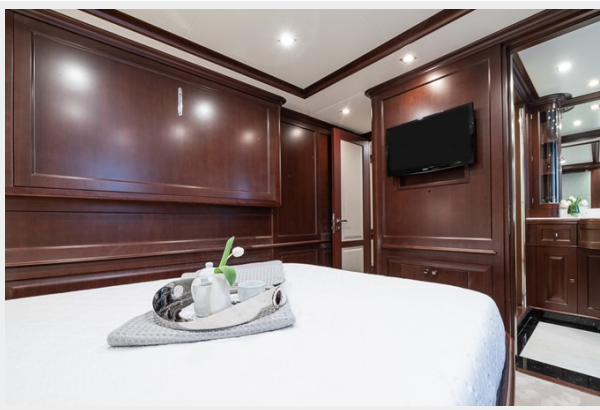
Engines: 1

Manufacturer: MTU

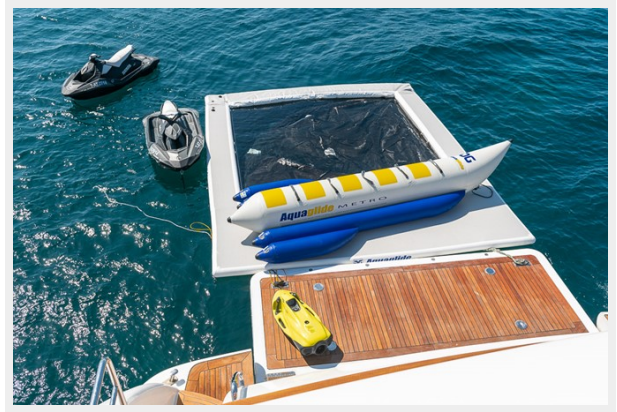
Fuel Type: Diesel

PHOTOS









CONTACTS

Andrey Shestakov, leading yacht broker of the sales department of Shestakov Yacht Sales Inc. Shestakov Yacht Sales Inc., the official representative of the Miami/Fort Lauderdale FL headquarters.

Contact details

Email: andrey@shestakovyachtsales.com

Web: shestakovyachtsales.com/en/

Telephones

USA: +1(954)274-4435

Office hours

Monday – Saturday: **9:00 - 21:00** EDT

Sunday: **closed**

Address



Harbour Towne Marina, 850 NE 3rd St,
STE 213, Dania, FL 33004