

## BUDDY GRACE — TIARA



**Судостроитель:** TIARA

**Год постройки:** 2012

**Модель:** Катер для спортивной рыбалки

**Цена:** ЦЕНА ЯХТЫ ПО ЗАПРОСУ

**Местонахождение:** Puerto Rico

**Длина общая:** 48' 0" (14.63m)

**Ширина:** 15' 11" (4.85m)

**Макс. осадка:** 4' 0" (1.22m)

Купить **Buddy Grace — TIARA** а также выбрать подходящую вам яхту из нашего каталога яхт вам поможет опытный яхтенный брокер Андрей Шестаков. На сегодняшний день компания **Shestakov Yacht Sales Inc.** имеет большое количество яхт в собственном списке продаж, а также тесно сотрудничает со всеми крупными яхтенными производителями по всему миру.

Для того чтобы купить яхту **Buddy Grace — TIARA** а также проконсультироваться по любому вопросу связанному с покупкой, продажей, чартером яхт позвоните по телефону **+7(918)465-66-44**.

# ОГЛАВЛЕНИЕ

ОГЛАВЛЕНИЕ	2
ХАРАКТЕРИСТИКИ	7
Обзор	7
Основная информация	7
Размеры	7
Скорость, вместимость и масса	8
Размещение	8
Корпус и палуба	8
Информация о двигателе	8
ПОДРОБНОЕ ОПИСАНИЕ	9
Manufacturer Provided Description	9
Исключения	10
Отказ от ответственности	11
ФОТОГРАФИИ	12
Stbd Front Vlew 2	12
Stbd Vlew	12
Front Stbd View	12
Port Front View 3	12
Stbd Front View	12
Stbd View	12
Stbd Aft View	13
Aft Stbd View	13
Aft View	13
Port Aft View	13
Port View 2	13
Port View	13
Front View	14
Stbd Side	14

Port Side	14
Black Mask	14
Front	14
Black Mask and EZ2CY Enclosures	14
Rupp Double Spreaker Outriggers 32Ft Deck Mount	15
Lewmar Windlass	15
Cockpit w/Mezzanine and Cocktail Teak Table	15
Cockpit View 2	15
Mezzanine w/Cocktail TeakTable	15
Cockpit	15
Cockpit View 3	16
Mezzanine Cooler	16
Cockpit Grill at Stbd Side	16
Cockpit to Bridge Steps	16
Access hatch for ladder or stairwayto flybridge	16
Bridge to Cockpit Steps	16
Helm w/Glendinging® side mount enginecontrols	17
Trim Tabs and Glenndening Controls Actuators	17
Bridge Rocker Switches	17
Engine Start/Stop and Clarion CMD6 Stereo	17
Bridge Air Conditioning Control and Icom M-504 VHF Radio	17
Bridge Freezer Control and Backup Electronic Controls Switch	17
2 Garmin 7215 Touch Screen	18
CAT Engine Display	18
Two (2) Release Marine® teak helm chairs w/ footrests	18
Simrad AP24 Autopilot	18
Bridge Fridge	18
Fwd Seating Bridge	18
Bridge Freezer	19

Fwd Seating Bridge 2	19
Fwd Console Seat	19
Stbd fwd Seating	19
Helm Chairs Covers	19
Console Cover	19
JL Audio Speakers	20
Fwd Seating Covers	20
Salon	20
Galley / Sofa	20
Port Salon 2	20
Salon Sofa	20
Cabin Entry and TV Cabinet	21
Salon Sofa converted to Bed	21
Port Salon	21
40" LCD TV mounted on a hi-lo actuator	21
Stbd side Dinette	21
Stbd Side Dinette 2	21
Sub Zero Drawer Style Fridge/Freezer	22
Galley Teak & Holly Floor	22
Galley 2	22
Galley 3	22
Galley	22
Sharp Convention/Microwave	22
Kenyon 3 Burner Stove	23
Galley Sink	23
Salon to Staterooms Steps	23
Staterooms Hallway	23
Stbd Side 3rd Stateroom	23
Manufacturer Provided Image	23

---

3rd Stateroom	24
3rd Stateroom TV w/DVD	24
Salon to Staterooms Steps 2	24
Master Stateroom 2	24
Master Stateroom 3	24
Master Stateroom	24
Master Port Cabinets and TV w/Sat TV	25
Master Head	25
Master Head Toilet	25
Master Head Cabinets	25
Master Head Tiles	25
Master Head Sink	25
VIP Stateroom	26
VIP Head	26
VIP Head 2	26
VIP TV w/DVD	26
VIP Stateroom 2	26
Staterooms Hallway	26
Washer/Dryer Combo	27
Rupp Outriggers	27
Aft Lazzarette	27
Simrad Autopilot Rudder Feedback	27
Bridge Air Conditioning	27
Engine Room	27
Stbd Engine	28
Port Engine	28
Port Shaft Seals	28
Onan 13.5kw Generator	28
Engine Water Strainers	28

---

---

Watermaker Filters	28
Battery Switches	29
Engine and Generator RACOR Filters	29
Watermaker Membrane	29
Fuel Tank Pick ups	29
Fireboy Automatic Fire Extinguisher System	29
NEW Batteries	29
Stbd Engine 2	30
Port Engine 2	30
Port Engine 3	30
Stbd Engine 3	30
Engine Room 2	30
Battery Charger 24V 80 Amp	30
Battery Equalizer 100 Amp	31
Cockpit Freezer Control	31
U-Lube Oil Changing System for Engines, Transmissions and Generator	31
Engine Room Rocker Switches	31
<b>КОНТАКТЫ</b>	<b>32</b>
Контактная информация	32
Телефоны	32
Время работы	32
Адрес	32

# ХАРАКТЕРИСТИКИ

## Обзор

- CATERPILLAR C-18 ACERT 1,015 HP (359 hrs)
- ONAN 13.5KW Generator
- Bow Thruster 24V
- Glendinning® side mount engine controls on flybridge console
- Water Maker Reverse osmosis, 19 GPH.
- Bridge Air Conditioning, 16,000 BTUs
- 30" Swim platform w/ built-in ladder
- Fish style ladder
- Teak package, helm
- Hardtop, Tournament style
- Rupp® outriggers Double Spreader 32 Ft. Deck Mount
- Electrically operated blinds for side windows, salon
- Cabin sole, upper salon/dinette/galley Solid Teak & Holly
- Cabin sole, hallway/staterooms Solid Teak & Holly
- Washer/dryer, hallway closet
- 19" LCD TV Forward guest stateroom & Side guest stateroom
- Refrigerator/freezer, flybridge
- Underwater Lights (2), Xenon 12V/50W

## Основная информация

**Тип судна:** Катер для спортивной рыбалки

**Подкатегория:** Convertible

**Модельный год:** 2012

**Год постройки:** 2012

**Страна:** Puerto Rico

## Размеры

**Длина общая:** 48' 0" (14.63m)

**Длина по ватерлинии:** 53' 11" (16.43m)

**Ширина:** 15' 11" (4.85m)

**Макс. осадка:** 4' 0" (1.22m)

**Трапы:** 17' 5" (5.31m)

## Скорость, вместимость и масса

---

**Водоизмещение:** 45012 Pounds

**Вместимость воды:** 150 Gallons

**Вместимость сточного бака:** 50 Gallons

**Объем топливного бака:** 1000 Gallons

## Размещение

---

**Всего кают:** 3

**Всего коек:** 7

**Всего ком. состава:** 2

## Корпус и палуба

---

**Материал корпуса:** Fiberglass

## Информация о двигателе

---

**Двигатели:** 2

**Производитель:** Caterpillar

**Модель:** C-18 Acert

**Тип двигателя:** Inboard

**Тип топлива:** Diesel



# ПОДРОБНОЕ ОПИСАНИЕ

## Manufacturer Provided Description

The 4800 Convertible - Equipped with twin CAT C18 ACERT/885 H.P. or 1,015 H.P. diesels -is fully capable of handling bluewater fishing and/or sea cruising (diesels available with an engine chrome package, at extra cost). An optional ZF Joystick Maneuvering System (JMS) is also available.

FLYBRIDGE -The large command bridge includes an island helm station (full flush mount electronics capability), dual Release Marine captains chairs, forward center bench seat, port/starboard L-lounges, lots of storage space, and AM/FM/CD stereo with iPod/MP3 interface. Available with optional forward teak table, and optional tournament-style hardtop, with six-rod holder rocket launcher, molded-in aft spreader lights, wire raceways for electronics, and Imtra red/white/blue lighting. Fish-style flybridge access ladder is standard - An optional cruise-style fiberglass stairway is also available.

LOWER COCKPIT - The 140 square-foot lower cockpit is designed to accommodate a fighting chair if desired, and features low freeboard, rigging station/tackle storage, insulated flush floor storage boxes with split lids, port/starboard rod holders, aft-facing mezzanine seating, walk-in engine room access, molded-in transom door and gate, and sliding entry door to the salon. Optional transom baitwell, with removable split lid, optional lower cockpit teak decking or carpet, and optional 30" swim platform with built-in ladder.

FOREDECK-Includes molded-in fiberglass bow pulpit and automatic rope/chain anchor windlass system. Optional foredeck sun pad. (An optional forward fixed center cabin window is available).

The Tiara Yachts 4800 Convertible interior is large, spacious and luxurious, for comfortable and open living, relaxing, entertaining and socializing. Three private staterooms provide generous sleeping accommodations for 7. And three air conditioners with reverse cycle heat (salon, master stateroom, side guest stateroom) and individual controls cool/heat as needed.

SALON GREATROOM - The salon/dinette/galley greatroom has elegant curved surfaces that repeat and flow throughout the entire living quarters. The solid teak (or optional solid teak and holly) hardwood sole extends throughout the salon, and all three staterooms and the hallway are carpeted the master and day heads are tiled. The salon has a large port L-lounge (with a pull-out sleeper), and a starboard U-shaped settee and teak fixed pedestal dinette table for dining and socializing.

The salon entertainment center features a Sharp#174; Aquos 37" flat screen LCD TV (with iPod/MP3/game port interface), mounted on a hi-lo actuator for easy concealment, and Bose audio system with integrated DVD/CD player. Manual (or optional electric) window blinds port, starboard, aft provide privacy as desired.

GALLEY - Opposite the dinette/settee, the midship galley has quartz countertops, tile

backsplash, upper/lower cabinets, microwave/convection oven, 3-burner electric cooktop (with sea rails), 2 sets of Sub-Zero refrigerators and freezers (one with icemaker), and stainless undermount sink. Among the options are dishwasher, garbage disposal, and a galley skylight (extends from galley into the master stateroom).

The lower level of the 4800 Convertible features three large staterooms with carpeted floors (teak or teak and holly floors available as an option).

**MASTER STATEROOM** - The large and comfortable portside master stateroom has a queen berth with innerspring mattress (storage below), night stands, hullside cabinets, hanging locker, Sharp Aquos 19" flat screen LCD TV, DVD player, AM/FM/CD stereo and iPod/MP3 interface, and a private ensuite master head. Full frame stateroom entry door and sliding pocket door to ensuite head.

**MASTER HEAD** - The master head has Corian countertop, porcelain sink, vanity with mirror, linen closet, enclosed shower with seat and tempered glass door/window, and tile flooring.

**GUEST STATEROOM** - The forward guest stateroom also has a full frame entry door, double lower berth (optional rod storage under), single upper berth, innerspring mattresses, hanging locker, storage, and optional Sharp Aquos 19" flat screen TV/DVD.

**GUEST STATEROOM** - The starboard guest stateroom includes over/under bunks (optional rod storage below) with innerspring mattresses, hanging locker, sliding entry door, and optional Sharp Aquos 19" flat screen TV/DVD.

**GUEST/DAY HEAD** - The guest/day head has Corian countertop with porcelain sink, vanity with mirror, enclosed shower with seat, storage, and tile floors. Dual entry from the hallway and the forward guest stateroom. Adjacent, aft of the day head, is a hallway closet (optional stacked washer and dryer).

**COCKPIT** - The cockpit offers a standard fish-style ladder (or optional cruise-style) to the flybridge, portside bait prep center and adjoining engine room entry, and molded-in transom door and gate. Lower cockpit carpet, aft fold-down lounge and an optional 30" swim platform with built-in ladder are also available. Aft-opening starboard entry door to the salon. Travel fore and aft is safe and secure, with molded-in steps port/starboard to walkways, safety handrails and one-piece welded 1-1/4" brushed aluminum bow rail (and Tiara custom diamond pattern non-skid).

**FOREDECK** - The large foredeck features a standard molded-in fiberglass bow pulpit, flush forward anchor rode locker with overboard drain, and automatic rope/chain anchor windlass system with foot pedal (and helm remote).

## Исключения

---

При продаже яхты исключаются личные вещи владельца.

## Отказ от ответственности

---

Компания предоставляет описание судна или яхты добросовестно, но не может гарантировать точность этой информации, а также не ручается за техническое состояние. Покупатель должен проинструктировать своих агентов или оценщиков исследовать представленную информацию более подробно, по собственному желанию. Продажа судна или яхты, изменение цены или снятие с продажи будет происходить без предварительного уведомления.

# ФОТОГРАФИИ

**Stbd Front View 2**



**Stbd View**



**Front Stbd View**



**Port Front View 3**



**Stbd Front View**



**Stbd View**



**Stbd Aft View**



**Aft Stbd View**



**Aft View**



**Port Aft View**



**Port View 2**



**Port View**



**Front View**



**Stbd Side**



**Port Side**



**Black Mask**



**Front**



**Black Mask and EZ2CY Enclosures**



**Lewmar Windlass**



**Rupp Double Spreader Outriggers 32Ft Deck Mount**



**Cockpit w/Mezzanine and Cocktail Teak Table**



**Cockpit View 2**



**Mezzanine w/Cocktail TeakTable**



**Cockpit**



**Cockpit View 3**



**Mezzanine Cooler**



**Cockpit Grill at Stbd Side**



**Cockpit to Bridge Steps**



**Bridge to Cockpit Steps**



**Access hatch for ladder or stairway to flybridge**





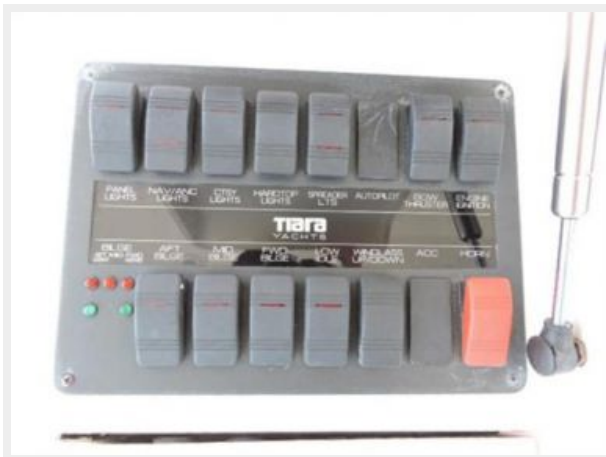
**Helm w/Glendinning® side mount enginecontrols**



**Trim Tabs and Glendening Controls Actuators**



**Bridge Rocker Switches**



**Engine Start/Stop and Clarion CMD6 Stereo**



**Bridge Air Conditioning Control and Icom M-504 VHF Radio**



**Bridge Freezer Control and Backup Electronic Controls Switch**



**2 Garmin 7215 Touch Screen**



**CAT Engine Display**



**Simrad AP24 Autopilot**



**Two (2) Release Marine® teak helm chairs w/ footrests**



**Bridge Fridge**



**Fwd Seating Bridge**



**Bridge Freezer**



**Fwd Seating Bridge 2**



**Fwd Console Seat**



**Stbd fwd Seating**



**Helm Chairs Covers**



**Console Cover**



**JL Audio Speakers**



**Fwd Seating Covers**



**Salon**



**Galley / Sofa**



**Port Salon 2**



**Salon Sofa**



**Cabin Entry and TV Cabinet**



**Salon Sofa converted to Bed**



**Port Salon**



**40" LCD TV mounted on a hi-lo actuator**



**Stbd side Dinette**



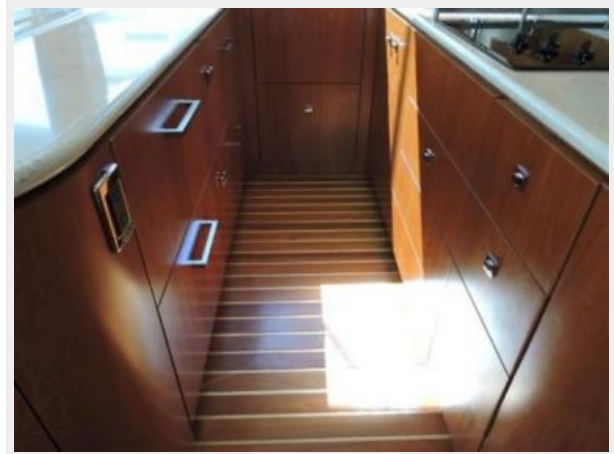
**Stbd Side Dinette 2**



**Sub Zero Drawer Style Fridge/Freezer**



**Galley Teak & Holly Floor**



**Galley 2**



**Galley 3**



**Galley**



**Sharp Convention/Microwave**



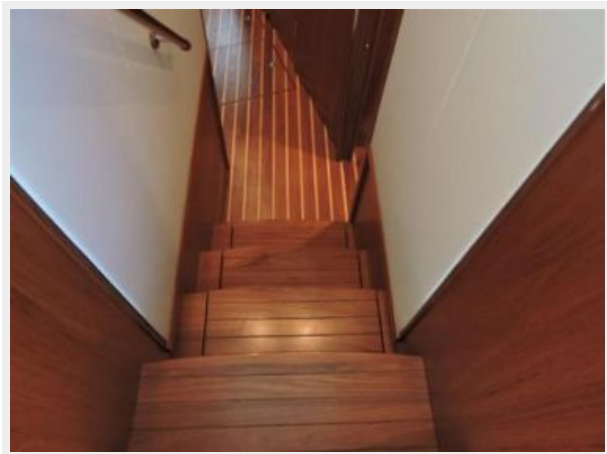
**Kenyon 3 Burner Stove**



**Galley Sink**



**Salon to Staterooms Steps**



**Staterooms Hallway**



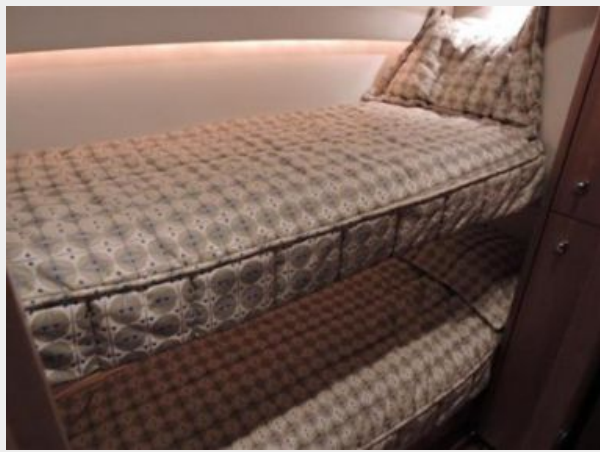
**Manufacturer Provided Image**



**Stbd Side 3rd Stateroom**



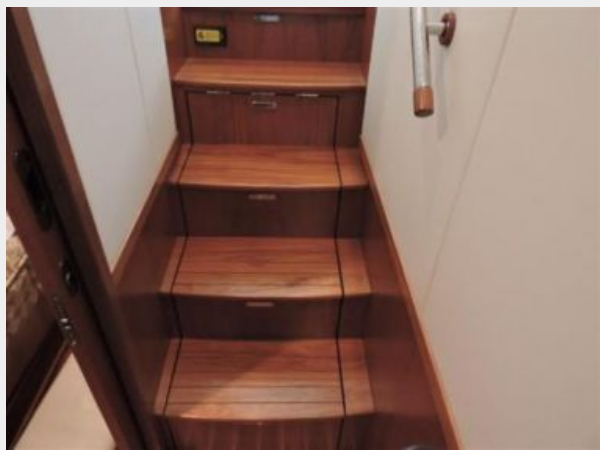
**3rd Stateroom**



**3rd Stateroom TV w/DVD**



**Salon to Staterooms Steps 2**



**Master Stateroom 2**



**Master Stateroom 3**



**Master Stateroom**





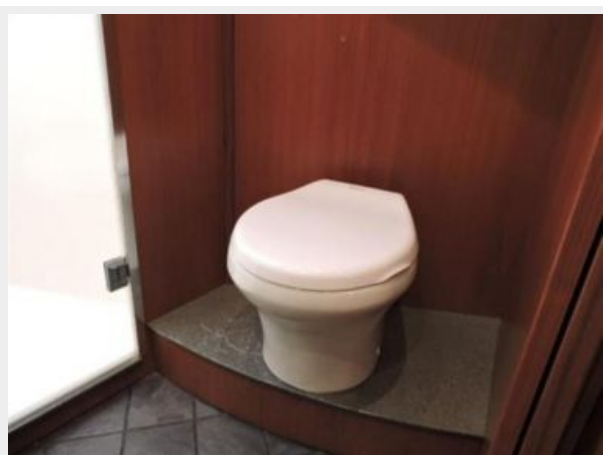
**Master Port Cabinets and TV w/Sat TV**



**Master Head**



**Master Head Toilet**



**Master Head Cabinets**



**Master Head Tiles**



**Master Head Sink**



**VIP Stateroom**



**VIP Head**



**VIP Head 2**



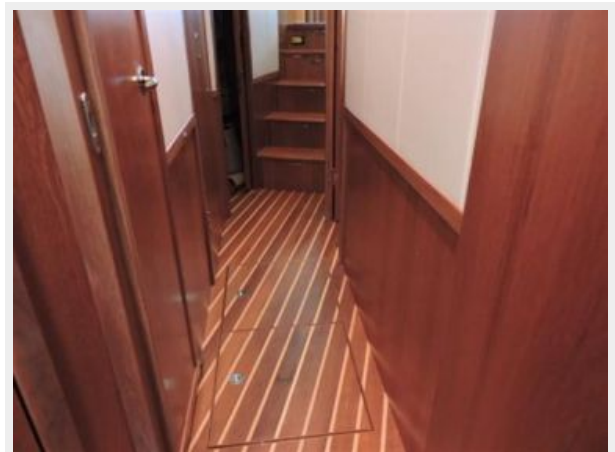
**VIP TV w/DVD**



**VIP Stateroom 2**



**Staterooms Hallway**



**Washer/Dryer Combo**



**Rupp Outriggers**



**Aft Lazzarette**



**Simrad Autopilot Rudder Feedback**



**Bridge Air Conditioning**



**Engine Room**



**Stbd Engine**



**Port Engine**



**Port Shaft Seals**



**Onan 13.5kw Generator**



**Engine Water Strainers**



**Watermaker Filters**



**Battery Switches**



**Engine and Generator RACOR Filters**



**Watermaker Membrane**



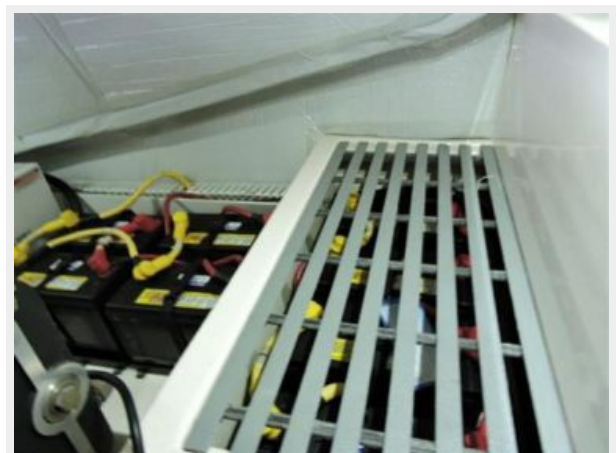
**Fuel Tank Pick ups**



**Fireboy Automatic Fire Extinguisher System**



**NEW Batteries**



**Stbd Engine 2**



**Port Engine 2**



**Port Engine 3**



**Stbd Engine 3**



**Engine Room 2**



**Battery Charger 24V 80 Amp**



### Battery Equalizer 100 Amp



### Cockpit Freezer Control



### Engine Room Rocker Switches



### U-Lube Oil Changing System for Engines, Transmissions and Generator



# КОНТАКТЫ

---

Андрей Шестаков (Andrey Shestakov) – ведущий яхтенный брокер отдела продаж яхт и судов компании Shestakov Yacht Sales Inc. Официальный представитель Shestakov Yacht Sales Inc. для русскоговорящих клиентов в центральном офисе компании в Майами/Форт Лодердейл/Флорида/США.

## Контактная информация

---

Email: [andrey@shestakovyachtsales.com](mailto:andrey@shestakovyachtsales.com)

Web: [shestakovyachtsales.com](http://shestakovyachtsales.com)

## Телефоны

---

Краснодарский край: **+7(918)465-66-44**

США, Майами, Флорида: **+1(954)274-4435**

## Время работы

---

Понедельник – Суббота: **9:00 - 21:00**  
EDT

Воскресенье: **Закрето**

## Адрес

---



Harbour Towne Marina, 850 NE 3rd St,  
STE 213, Dania, FL 33004