

DO IT AGAIN — CATALINA



Builder: CATALINA

Year Built: 1988

Model: Cruiser

Price: PRICE ON APPLICATION

Location: United States

LOA: 41' 0" (12.50m)

Beam: 13' 10" (4.22m)

Max Draft: 4' 10" (1.47m)

Our experienced yacht broker, Andrey Shestakov, will help you choose and buy a yacht that best suits your needs **Do It Again — CATALINA** from our catalogue. Presently, at Shestakov Yacht Sales Inc., we have a wide variety of yachts available on our sale's list. We also work in close contact with all the big yacht manufacturers from all over the world.

If you would like to buy a yacht **Do It Again — CATALINA** or would like help answering any questions concerning purchasing, selling or chartering a yacht, please call **+1(954)274-4435**

TABLE OF CONTENTS

TABLE OF CONTENTS	2
SPECIFICATIONS	3
Basic Information	3
Dimensions	3
Speed, Capacities and Weight	3
Accommodations	3
Hull and Deck Information	3
Engine Information	3
DETAILED INFORMATION	4
Features	4
Exclusions	6
Disclaimer	6
PHOTOS	7
CONTACTS	18
Contact details	18
Telephones	18
Office hours	18
Address	18

SPECIFICATIONS

Basic Information

Category: Cruiser

Model Year: 1988

Year Built: 1988

Country: United States

Dimensions

LOA: 41' 0" (12.50m)

Beam: 13' 10" (4.22m)

Max Draft: 4' 10" (1.47m)

Clearance: 52' 5" (15.98m)

Speed, Capacities and Weight

Displacement: 23000 Pounds

Water Capacity: 215 Gallons

Holding Tank: 46 Gallons

Fuel Capacity: 85 Gallons

Accommodations

Total Cabins: 2

Total Heads: 2

Hull and Deck Information

Hull Material: Fiberglass

Engine Information

Engines: 1

Manufacturer: Yanmar

Model: 4JHE

Engine Type: Inboard

Fuel Type: Diesel

DETAILED INFORMATION

Features

INTERIOR

Mermaid 16,000 BTU Air Conditioning

All Salon and VBerth cushions in very good condition

Carpet and sole floor in very good condition

Orion 19" Flat Screen TV, Dolby Digital, HDMI

Carbon Monoxide Sensor/Alarm Aft Cabin

All interior lighting converted to LED May 2015

Screens for all port lights and hatches

ELECTRONICS / NAV

Chartplotter - Garmin GPSMap 740S

Depth and Speed - Horizon

Autopilot - SiTex SP70

Wind - SiTex Clipper

Ritchie Powerdamp Compass

GALLEY

Refrigerator/Freezer - Adler Barbour SuperCold Machine - October 2014

Microwave Oven - MagicChef M216

ENO 2 burner PROPANE stove top - July 2015

Hot Water Heater - Seward - 110v and engine heated

PROPULSION

Yanmar 4JHE, 44 hp, 1481 hours

Propeller Shaft Stuffing Box repacked - July 2015

Cutlass Bearing replaced - July 2015

Fire port in engine hatch

DECK

Paint and non-skid in excellent condition - Less than 2 years old

Running Rigging - Excellent condition - Less than 2 years old

Windlass - SL Hyspeed. Simpson-Lawrence - Double action lever, manual

CQR 35lb with 200' all chain rode - Main anchor

Danforth - Backup anchor

Fortress 38H - High tensile - Backup anchor

Magma Grill

SAILS

Fully Battened Main

Furling Genoa - 130%

Mack Sails Stack Pack and Lazy Jacks - NEW

ELECTRICAL

One 30amp Shore Power Connector

Honda 6000i portable generator - (runs air conditioning)

Wind Generator - SunForce 400 watt

Solar Panels - Renogy - Two Panels - 100 watts each panel - August 2015

Newmar Heavy Duty 70amp battery charger

Starter Battery - Baracuda BS24-1000 Cranking amps - 1000, Reserve Capacity = 135

House Batteries - One Olympic 4D-1000 CA=1200. One Electro GR 4D CA=1140

Galvanic Isolator - ProMariner ProSafe

Exclusions

Owner's personal belongings.

Disclaimer

The Company offers the details of this vessel or yacht in good faith but cannot guarantee or warrant the accuracy of this information nor warrant the condition of the vessel. A buyer should instruct his representatives, agents, or his surveyors, to investigate such details as the buyer desires validated. This vessel or yacht is offered subject to prior sale, price change, or withdrawal without notice.

PHOTOS







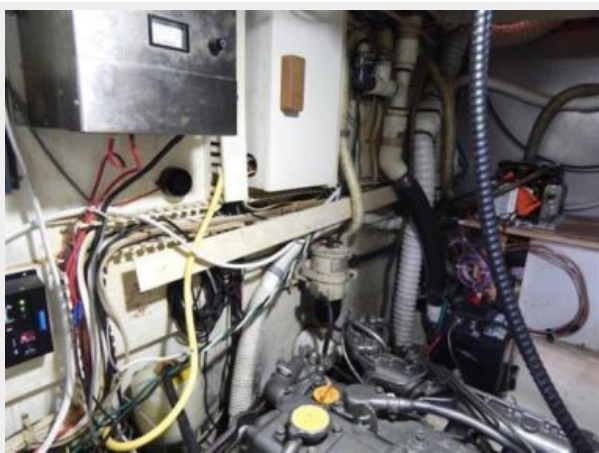




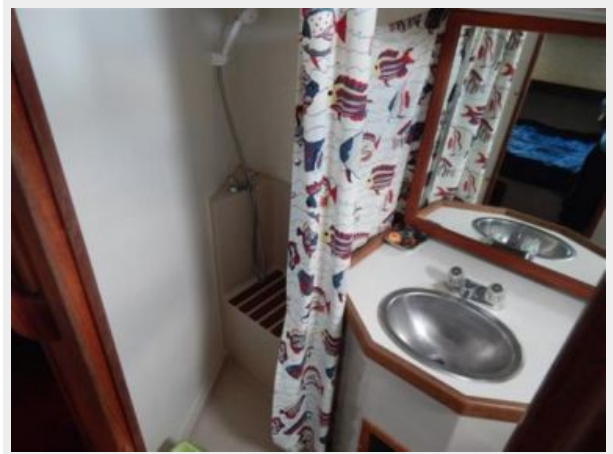












CONTACTS

Andrey Shestakov, leading yacht broker of the sales department of Shestakov Yacht Sales Inc. Shestakov Yacht Sales Inc., the official representative of the Miami/Fort Lauderdale FL headquarters.

Contact details

Email: andrey@shestakovyachtsales.com

Web: shestakovyachtsales.com/en/

Telephones

USA: +1(954)274-4435

Office hours

Monday – Saturday: **9:00 - 21:00** EDT

Sunday: **closed**

Address



Harbour Towne Marina, 850 NE 3rd St,
STE 213, Dania, FL 33004