

GOLD FISH — RELEASE BOAT WORKS



Builder: Release Boat Works

Year Built: 2012

Model: Sport Fisherman

Price: PRICE ON APPLICATION

Location: United States

LOA: 46' 0" (14.02m)

Beam: 15' 6" (4.72m)

Min Draft: 3' 6" (1.07m)

Max Draft: 3' 8" (1.12m)

Cruise Speed: 28 Kts. (32 MPH)

Max Speed: 35 Kts. (40 MPH)

Our experienced yacht broker, Andrey Shestakov, will help you choose and buy a yacht that best suits your needs **GOLD FISH — Release Boat Works** from our catalogue. Presently, at Shestakov Yacht Sales Inc., we have a wide variety of yachts available on our sale's list. We also work in close contact with all the big yacht manufacturers from all over the world.

If you would like to buy a yacht **GOLD FISH — Release Boat Works** or would like help answering any questions concerning purchasing, selling or chartering a yacht, please call **+1(954)274-4435**

TABLE OF CONTENTS

TABLE OF CONTENTS	2
SPECIFICATIONS	6
Basic Information	6
Dimensions	6
Speed, Capacities and Weight	6
Accommodations	6
Hull and Deck Information	7
Engine Information	7
DETAILED INFORMATION	8
Note:	8
Walkthrough and Accommodation	8
Deck Features and Fishing Equipment	9
Cabin and Galley	9
Deck Equipment	10
Electronics and Helm	10
Interior	11
Head	11
Cockpit	12
Hardtops and Tower	12
Construction	13
Electrical and Engine Room	13
Exclusions	14
Exclusions	14
Disclaimer	14
PHOTOS	15
dockside	15
GOLD FISH	15
teak coverboards	15

large cockpit	15
cockpit seating	15
air-conditioned helm deck	15
transom door	16
large fish box with Eskimo ice drop	16
2nd large fish box	16
cockpit freezers	16
cockpit rigging sink	16
transom livewell	16
panels for exterior/underwater lights, mascerators, washdown pumps	17
full walk-around side decks	17
pitch well and rod holders arranged for kite fishing	17
forward live bait pitch well	17
Pipewelders fully optioned tower	17
forward trunk cabin with deck hatch	17
pop-up forward cleats	18
foot pedals for windlass control	18
washdown hoses, speakers around side decks	18
windlass, stainless chute and Ultra anchor	18
Simrad black box, CHIRP sounders, GPS/chartplotter	18
teak cap railing, Release helm chair	18
Vhf radios in side compartment, Joystick, dynamic positioning	19
teak helm pod	19
Helm chair with contour cushions & footrest	19
VEI monitors & smart craft panel	19
teak trimmed helm bench with storage beneath	19
helm deck lounge	19
seating behind helm chair	20
Seacrylic polycarbonate enclosure	20

tower rod storage	20
electric teaser reels with remote controls	20
molded spreader lights & fiberglass tops	20
tower helm console with electronics & joystick	20
foredeck view from tower - chase em down!	21
cockpit view from tower	21
main electrical panel	21
cabin entry door	21
cabin	21
hideaway stovetop	21
galley counter, command mic	22
galley refrigerator drawers	22
Samsung LED panel	22
V-berth	22
day berth	22
overhead hatches, LED lighting	22
head	23
engine room entrance	23
battery switches, racor filters, white painted thru hull fittings	23
Cummins QSM 11s	23
Cummins/Onan generator, oil change system	23
Eskimo machine	23
watermaker	24
Zeus pods, livewell seachest box	24
pods, underwater lights	24
profile	24
cockpit undergunnel blue LED lighting	24
transom with removable fish table	24
underwater lights, green aft, blue downward	25

cockpit night lit	25
tower lighting, tri-color helm deck	25
LED speaders plus	25
dockside	25
Sea Trial	25
Cruising Speed	26
Full Throttle	26
Fresh Bottom Paint	26
Sharp Entry	26
Underwater Light	26
Prop Speed	26
New Zincs	27
Clean Sea Chests	27
Ready To Go	27
CONTACTS	28
Contact details	28
Telephones	28
Office hours	28
Address	28

SPECIFICATIONS

Basic Information

Category: Sport Fisherman

Sub Category: Express

Model Year: 2012

Year Built: 2012

Country: United States

Vessel Top: Full / Tuna Tower

Dimensions

LOA: 46' 0" (14.02m)

LOD: 50' 0" (15.24m)

Beam: 15' 6" (4.72m)

Min Draft: 3' 6" (1.07m)

Max Draft: 3' 8" (1.12m)

Speed, Capacities and Weight

Cruise Speed: 28 Kts. (32 MPH)

Cruise Speed RPM: 2000 Kts.

Max Speed: 35 Kts. (40 MPH)

Max Speed RPM: 2500 Kts.

Water Capacity: 120 Gallons

Holding Tank: 12 Gallons

Fuel Capacity: 550 Gallons

Accommodations

Total Cabins: 1

Total Berths: 3

Sleeps: 3

Total Heads: 1

Hull and Deck Information

Hull Material: Fiberglass

Deck Material: Fiberglass

Hull Configuration: Modified V-Hull

Engine Information

Engines: 2

Manufacturer: Cummins

Model: QSM11

Engine Type: Inboard

Fuel Type: Diesel

DETAILED INFORMATION

Note:

Release Boatworks created some beautiful vessels by combining classic sportfish styling with innovation of modern design and the latest marine technology. This vessel's walk-around design is cherished by the sportsman and appreciated by anyone who enjoys their fishing with a lighter crew.

The maneuverability that is realized with the joystick control, plus ease of operation around the dock are huge benefits, not to mention the Skyhook feature providing dynamic positioning capability. Cummins QSM11s are combined with Zeus drives and have been fully serviced this past summer. Light tackle, live bait fisherman will appreciate the transom live well in addition to the two forward pitch well tanks. Two generous under-deck fish boxes in the cockpit. Comfortable mezzanine style cockpit seating benches with two large refrigerator/freezer boxes behind plus a cockpit sink. An Eskimo crushed ice machine, auto-flush HRO water-maker, 3 aft and 2 below underwater lights, LED spreaders and under gunwale cockpit lights, Simrad Chirp sounder technology, plus a Furuno side scanning sonar.

Operate the boat with climate controlled comfort from the plush Release Helm Chair on the bridge deck or head up to the fully optioned tower helm. On the walk-around deck there are no steps and a safe level of freeboard all around plus a full array of rod holders and a Release Battle Saddle rocket launcher in the cockpit as well as a generous transom door.

In addition, this girl is dressed up with proper teak coverboards, varnished toe rail, cap rail and custom helm pod. Sharp light blue hull with recent blue bottom. Polished Stainless Anchor with chute and windlass. Pop up spring cleats.

GOLD FISH is in Florida to be sold, don't miss checking her out. Recently completed fresh bottom job & all new zincs - see recent photos.

Walkthrough and Accommodation

GOLD FISH is a large walk-around style inboard express boat which has tremendous benefits to the light/standup tackle angler with 360 degree fish-ability. This boat was designed by knowledgeable fisherman who thought about details and in combination with the Cummins/Zeus pod this vessel's maneuverability is a perfect compliment.

The bridge deck has a 4-sided enclosure with two aft facing mezzanine style lounges at the front of the cockpit. Just ahead of this seating are two freezer compartments to the portside and a cockpit sink to the starboard side beneath gas shock lift assisted tackle center-styled lids. Entering the bridge-deck centerline this area has A/C or reverse-cycle heat, with an L-shape bench to the portside and a smaller bench lounge to the starboard side. A single teak ladderback

Release Marine helm chair with footrest is just ahead to starboard at the helm. All bridge & mezzanine seating cushions are tan vinyl with navy blue piping. To the left of the helm is the cabin door with lift up top and bi-fold lower section accessing a three-step ladder down to the teak and holly sole below. Just aft to starboard of the entry is a full height rod locker closet, carpeted & with LED accent lighting. To the outboard side just forward is the head entry door with teak grate flooring, Avonite vanity top with stainless sink & mirror above, shower wand fixture, & Techma freshwater flush head. Back to the cabin and along the starboard side is the galley area with teak door cabinet storage above including a microwave oven and countertop below with hideaway two burner electric stovetop and undermount sink. Below are two drawer style refrigerators with small freezer compartments. Across is a single day berth with huge rod storage area beneath. Forward is a V-berth area with storage compartments around. Interior cushions are a bold blue and white striped Sunbrella fabric. On the forward bulkhead is a Samsung flat panel TV which has a Simrad controller pad allowing charting/navigation/bottom display. A pair of flush mounted stereo speakers are to either side of the TV. This is a very nice cabin considering that this boat is a walk-around style.

Deck Features and Fishing Equipment

- Release Teak ladderback helm chair with tan contour cushions & teak footrest on 4" chrome boltless stanchion
- Rolled Teak Covering Boards with transom well
- Varnish Teak bridge-deck cap rail
- Varnished teak helm pod with chrome single lever controls & custom helm wheel
- Bomar Deck Hatch forward
- Cockpit Freezers in boxes behind mezzanine seating
- Transom Door
- Refrigerated cockpit fish box
- Saltwater washdown, 3 connections
- Fresh water washdown, 3 connections
- Release teak battle saddle / rocket launcher with drawer and bait tray

Cabin and Galley

- Air Conditioning with reverse cycle heat
- Teak & Holly wood cabin sole
- Fresh water gauge
- Lighting overhead recessed in headliner
- Main electrical service panel AC DC Backlit for easier viewing
- Majilite headliner natural color
- Custom 2-part door to bridge deck
- V- berth area forward with storage below
- Electric 2 burner surface mount cooktop

- Exhaust fan, high velocity
- Galley countertop bone color avonite
- Microwave oven located in upper galley cabinet
- Refrigerator / freezer. large capacity, drawer style, 110v or 24v DC
- Sink stainless steel recessed in countertop with chrome galley faucet
- Storage cabinets and drawers in lower galley, varnished doors and faces with stowage for utensils & other items

Deck Equipment

- Helm Deck A/C & Heat, Marine Air 16,000 BTU
- 550 Gal. Per Day Water Maker, HRO systems, remote control at electrical panel
- Eskimo Chipped Ice Plumbed to Fish Box, 600#/day, remote control at electrical panel
- 6 Under Water lights (Aqua Luma)
- Three 12v Electric Reels outlets in Cockpit
- 22 Rod Holders around entire walk-around area in gunwales
- Live well sea chest with 4 pumps
- Pipewelders Tuna tower with molded hard tops and molded LED spreader lights
- 5 total spreader lights on 3 switches, 2 cockpit, 1 each forward, port, starboard
- Full enclosure, 3 sides are SeaCrylic and aft side is StrataGlass
- 2 Electric teaser Reels, Recessed in Hardtop, Miya Epoch US9R with remote
- Rupp double spreader outriggers, silver, hardtop mounted
- Pipewelders Roller clips on outrigger halyards
- Rupp center rigger
- Varnished Teak Toe Rail
- Teak decking on raised helm deck and mezzanine areas
- 2 above deck Live wells on gunwale by forward walk-around
- Muir Storm SSC2200 windlass includes SS chain Stopper, Devils Claw and stainless bow roller/chute, foot pedal controls as well as helm remote
- Auto Anchor 560 windlass controller at lower helm
- Light blue colored hull, painted, gold and navy blue boot stripe
- Bottom with "Carolina Smile" VC offshore burnished forward & Micron 66 aft and sides (blue) / prop speed

Electronics and Helm

- VEI display panel at lower helm (3 screens)
- JRC 10kw Black Box Radar with 6' open array scanner
- Simrad GP40 controller for chartplotting/radar/depth recorder
- Furuno 150 Khz Searchlight Sonar (side scanning) displays on VEI panels, CH250BB
- Simrad GS15 Active GPS Antenna

- Simrad BSM-2 Broadband Chirp Sounder Module
- Smartcraft Vessel View engine data displays at both helms
- Zeus Joystick controllers at both helms
- Simrad WM2 Sirius Weather Module
- Simrad Structure Scan bronze thru hull transducer with fairing block
- Auto pilot, Precision pilot part of Zeus system, remote panel also in tower
- Standard Horizon GX2150 VHF with AIS & external speaker
- Standard Horizon GX5500S VHF & external speaker
- Standard Horizon RAM3 remote full control Vhf Mic units (2) in tower with external speakers
- Simrad NSE - 12" Multifunction Display in tower helm pod
- Hailer through Vhf radios
- Richie magnetic powerdamp compass centerline on cap rail top on bridge deck
- Ritchie magnetic powerdamp compass in tower
- Airmar Cm 599c - Broadband Chirp transducer 112Khz, flush mount
- Fast response sea water temp sensor
- Furuno FRP Hull tube
- Furuno sonar Hull unit Csh-255, 250 mm of travel, 24v DC
- Custom Radio Box at lower helm outboard side
- Remote antenna connection for Iridium sat phone (no phone included)
- 12v outlet plugs in helmside radio box & portside glovebox
- Fusion stereo remote connection point for I-pod, phone, etc.
- Am/Fm Stereo Antenna, audio controlled through Simrad system
- Satellite Radio
- JL Audio Speakers
- Stereo Power Amp
- Simrad GP40 controller in cabin below TV
- Standard Horizon RAM remote full control Mic unit in cabin
- ACR EPIRB in hydro-release mount on hardtop

Interior

The Cabin entrance is offset to port and three steps down, in a nice cabin featuring a V- berth forward with storage under. On the port side you have a nice raised bunk, with rod-locker storage under a three huge pull out storage drawers under that.

To Starboard is a galley countertop with two- burner cook top, overhead microwave and Storage. There's even more storage under the counter next to the refrigerator and freezer. Aft of the galley is a full head with shower sink and vanity. There is also a full size stand up rod locker on the aft bulkhead.

Head

- Air conditioning / heat with vent in soffit
- Exhaust fan with vent in soffit
- Lights recessed in soffit and ceiling.
- Linen storage
- Molded fiberglass vanity and sink Avonite top and Chrome faucet
- Receptacle , 12 V
- Tecma with overboard and holding tank discharge
- Chrome shower fixture's and drain to automatic sump pump in bilge
- Towel bar - Chrome

Cockpit

- Dockside electric connection 50 amp / 220 V electric, located under gunwale
- Pump room access hatch
- Dockside water connection with pressure reducing valve under gunwale
- Fresh water wash downs with hose bibs located forward & aft on main deck
- Gaskets for all lids, doors, and access doors.
- Large fish cleaning / bait cutting table on gimbal stands fits over aft livewell
- Lazzarette hatch for inspection of aft bilge
- Molded-in insulated fish boxes, Port and Starboard with gutters and drains plumbed to macerator pump out
- Non skid deck
- Pop up stainless steel cleats amidships
- Rod Holders, 8 flush mounted into teak coverboards in cockpit
- Sea Water wash downs with pump in lazarette and spigots under forward and aft gunwale to keep deck clean while fishing.
- Self bailing cockpit with large cockpit scuppers
- Stainless steel gas springs on all hatches and lids
- Transom door

Hardtops and Tower

- Custom hardtops on bridge and tower, single pipe bar with molded tops
- Tower station has padded belly band and fiberglass helm console with single binnacle engine control levers, plus start/stop switches, autopilot & tab controls
- freshwater wash spigot in tower floor box
- 3 degree forward angle radar pod

- Anchor, red/green running and stern lights molded (LED) USCG certified
- Tri color red white and blue hardtop lights
- Cockpit Spreader lights 2 in 1 molded LED, Lumitec, 12/24 volts, also side and forward single molded spreader lights
- 3 - sided hard enclosure (7 panel center to attach to hardtop)
- Aft enclosure strataglass with roll up door
- Nine rod holders on aft tower rails and Four on aft legs

Construction

- Ablative / Copolymer blue anti-fouling bottom paint, 2 coats primed
- Alexseal painted engine room and lazarette for enhanced visibility and easier maintenance
- Blister resistant modified epoxy resin in entire hull skin
- Custom blended vinylester resin used in structural laminates, top sides bridges and hardtops.
- High performance isophthalic gel coat gives superior gloss, flexibility and outstanding weathering characteristics
- Molded fiberglass construction using premium vinylester resins, biaxial & triaxial stitched fabric reinforcement; cored construction
- Corners and hatch edges have carbon fiber reinforcement to minimize spider cracking
- Hull has a layer of Kevlar cloth in the laminate
- Aluminum fuel tanks with baffles inside ; sealed with coal tar
- Molded fiberglass bridge deck / engine room ceiling with foam core for acoustical and thermal insulation
- Non Skid applied for traction and durability
- Stringers fiberglass / carbon encapsulated foam
- Vacuum Infused Resin (VIR) foam cored bulkheads - Main engine room bulkheads lazarette and anchor locker bulkheads

Electrical and Engine Room

- 13.5 kw Onan/Cummins Generator in sound shield (1638 hours)
- Newmar Phase Three Battery chargers (12v & 24v) with thermal cutoff and switching system for complete integration
- Battery panel with battery cutoff and charging system breakers
- Battery parallel system for main engines and generator start
- Bonded electrical system with ground plate

- Engine room lights , DC with switch at helm
- Blue Sea Systems Master electrical panel located in salon with 12/24vDC 120/240vAC circuit breakers individual switching for shore, or generator supply. Digital VCM display for electrical supply, voltmeter, amp meter and frequency.
- Receptacles 120V duplex with GFCO throughout
- 50 AMP Shore Power
- 12V/24V DC ships service throughout
- 12V power supply with breakers on bridgedeck for future electronics
- 110V outlets in pump room on forward bulkhead and in aft lazarette pod area
- Anchor light / navigation lights
- Batteries independent 12V banks mounted in storage pans, Odyssey group31s, 2 batteries for each motor, 2 batteries for electronics, 1 battery for generator
- Ultra Safety Systems high water alarm
- Pod area hatches lift by electric rams
- Engines are under Cummins factory warrantee until June 1, 2018 or 3000 hours whichever comes first, 1000 hour service reportedly completed in July, 2015.
- Engines have mechanical gauges (Oil press/Temp) mounted on inboard side
- Racor primary fuel filters
- Reverso oil change system
- Fresh water outlet with HoseCoil holder in ER
- Livos Technologies engine room ventilation system / demister
- Fireboy engine room suppression system with remote panel at lower helm

Exclusions

GOLD FISH may still have some items aboard that are not intended to convey. Specifically excluded are any tackle, fishing gear, tools, handheld electronics or personal effects. There is also a Winslow valise liferaft aboard that is not included.

Exclusions

Owner's personal belongings.

Disclaimer

The Company offers the details of this vessel or yacht in good faith but cannot guarantee or warrant the accuracy of this information nor warrant the condition of the vessel. A buyer should instruct his representatives, agents, or his surveyors, to investigate such details as the buyer desires validated. This vessel or yacht is offered subject to prior sale, price change, or withdrawal without notice.

PHOTOS

GOLD FISH



dockside



teak coverboards



large cockpit



cockpit seating



air-conditioned helm deck



transom door



large fish box with Eskimo ice drop



2nd large fish box



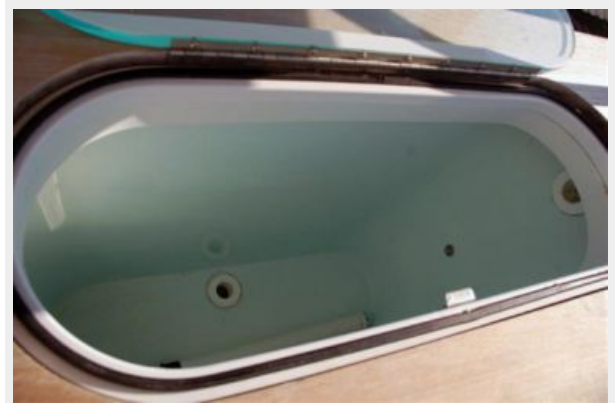
cockpit freezers



cockpit rigging sink



transom livewell



**panels for exterior/underwater lights,
mascerators, washdown pumps**



full walk-around side decks



forward live bait pitch well



**pitch well and rod holders arranged for kite
fishing**



Pipewelders fully optioned tower



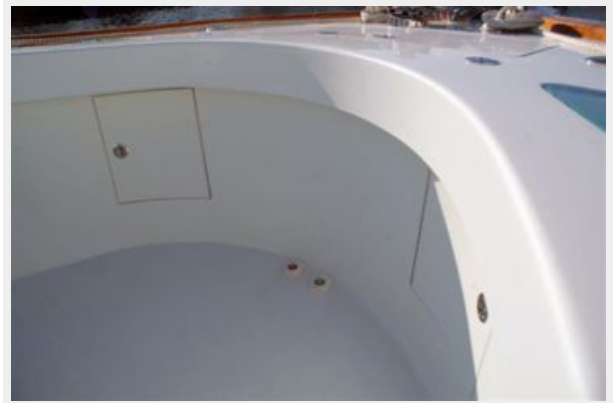
forward trunk cabin with deck hatch



pop-up forward cleats



foot pedals for windlass control



washdown hoses, speakers around side decks



windlass, stainless chute and Ultra anchor



teak cap railing, Release helm chair



Simrad black box, CHIRP sounders, GPS/chartplotter



teak helm pod**Vhf radios in side compartment, Joystick, dynamic positioning****Helm chair with contour cushions & footrest****VEI monitors & smart craft panel****helm deck lounge****teak trimmed helm bench with storage beneath**

seating behind helm chair



Seacrylic polycarbonate enclosure



tower rod storage



electric teaser reels with remote controls



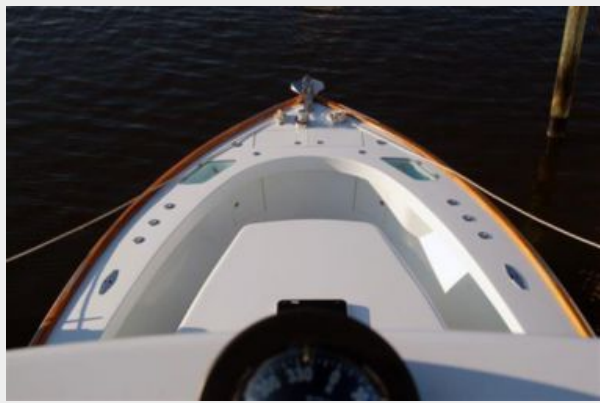
molded spreader lights & fiberglass tops



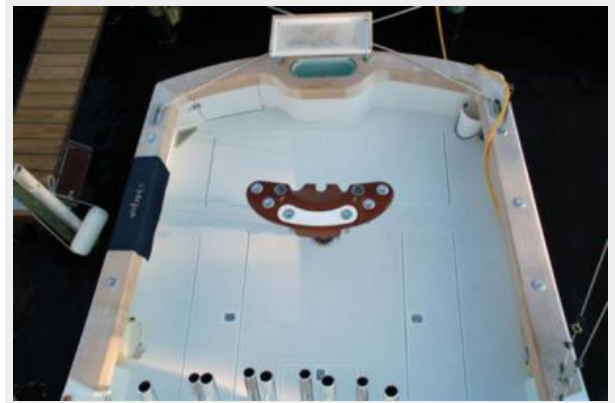
tower helm console with electronics & joystick



foredeck view from tower - chase em down!



cockpit view from tower



cabin entry door



main electrical panel



cabin



hideaway stovetop



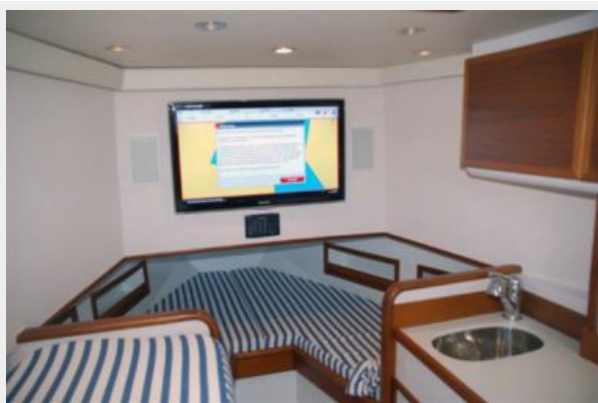
galley counter, command mic



galley refrigerator drawers



Samsung LED panel



V-berth



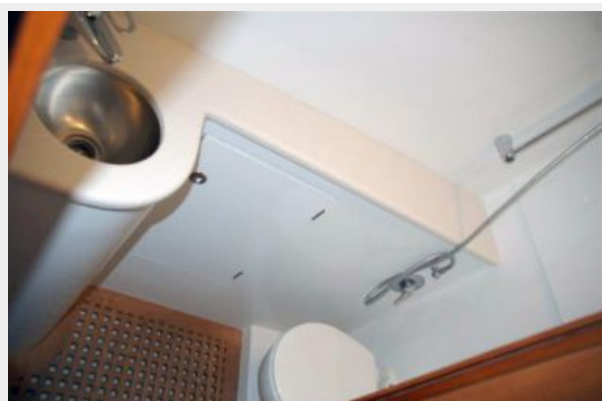
day berth



overhead hatches, LED lighting



head



engine room entrance



Cummins QSM 11s



battery switches, racor filters, white painted thru hull fittings



Cummins/Onan generator, oil change system



Eskimo machine



watermaker



Zeus pods, livewell seachest box



pods, underwater lights



profile



cockpit undergunnel blue LED lighting



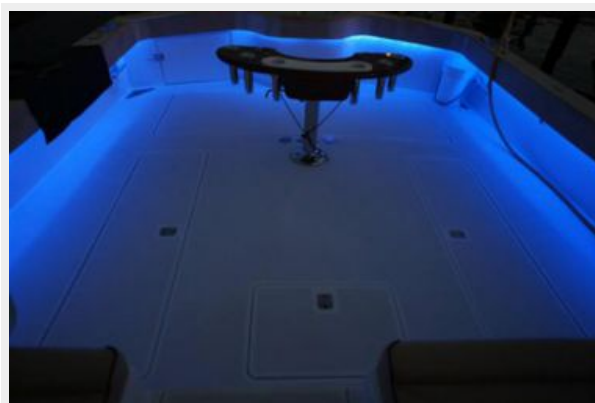
transom with removable fish table



underwater lights, green aft, blue downward



cockpit night lit



tower lighting, tri-color helm deck



LED speaders plus



dockside



Sea Trial



Cruising Speed**Full Throttle****Fresh Bottom Paint****Sharp Entry****Underwater Light****Prop Speed**

New Zincs



Clean Sea Chests



Ready To Go



CONTACTS

Andrey Shestakov, leading yacht broker of the sales department of Shestakov Yacht Sales Inc. Shestakov Yacht Sales Inc., the official representative of the Miami/Fort Lauderdale FL headquarters.

Contact details

Email: **andrey@shestakovyachtsales.com**

Web: shestakovyachtsales.com/en/

Telephones

USA: **+1(954)274-4435**

Office hours

Monday – Saturday: **9:00 - 21:00 EDT**

Sunday: **closed**

Address



Harbour Towne Marina, 850 NE 3rd St,
STE 213, Dania, FL 33004