

SILVER TONGUE II — HATTERAS



Builder: HATTERAS

Year Built: 1983

Model: Motor Yacht

Price: PRICE ON APPLICATION

Location: United States

LOA: 56' 3" (17.15m)

Beam: 18' 2" (5.54m)

Min Draft: 4' 11" (1.50m)

Cruise Speed: 15 Kts. (17 MPH)

Max Speed: 18 Kts. (21 MPH)

Our experienced yacht broker, Andrey Shestakov, will help you choose and buy a yacht that best suits your needs **SILVER TONGUE II — HATTERAS** from our catalogue. Presently, at Shestakov Yacht Sales Inc., we have a wide variety of yachts available on our sale's list. We also work in close contact with all the big yacht manufacturers from all over the world.

If you would like to buy a yacht **SILVER TONGUE II — HATTERAS** or would like help answering any questions concerning purchasing, selling or chartering a yacht, please call **+1(954)274-4435**

TABLE OF CONTENTS

TABLE OF CONTENTS	2
SPECIFICATIONS	4
Overview	4
Basic Information	4
Dimensions	4
Speed, Capacities and Weight	4
Accommodations	4
Hull and Deck Information	5
Engine Information	5
DETAILED INFORMATION	6
Accommodations	6
Electronics	6
Deck Equipment	6
Galley	6
Mechanical	7
Exclusions	7
Disclaimer	7
PHOTOS	8
Front View of Flybridge	8
Forward Deck	8
Flybridge Helm	8
Flybridge Aft	8
Aft Deck Staircase to Bridgedeck	9
Lower Helm Bench Seat	9
Galley	9
Dinette	9
Galley	10
Lower Helm	10

Master Stateroom	10
Master Stateroom	10
Master Head	11
Master Stateroom	11
Guest Stateroom #1	11
Guest Head	11
Bow Guest Stateroom #2	12
Starboard Engine Room	12
Port Engine Room	12
CONTACTS	13
Contact details	13
Telephones	13
Office hours	13
Address	13

SPECIFICATIONS

Overview

Standard Hatteras 56 layout that accommodates 6 people in 3 staterooms. Exceptions are: Master Stateroom has a built-in vanity with drawers aft to starboard. Aft deck has a custom staircase to upper bridge deck, in addition to ladder at lower helm. The bridge deck features a U-shaped seating area with hi/lo table. Wet bar aft of helm includes sink and U-Line Refrigerator/Ice maker. Aft is a 1983 13' Boston Whaler with outboard tender and a Marquipt davit.

Basic Information

Category: Motor Yacht	Model Year: 1983
Year Built: 1983	Country: United States
Vessel Top: Bimini Top	

Dimensions

LOA: 56' 3" (17.15m)	Beam: 18' 2" (5.54m)
Min Draft: 4' 11" (1.50m)	MFG Length: 56' 0" (17.07m)

Speed, Capacities and Weight

Cruise Speed: 15 Kts. (17 MPH)	Max Speed: 18 Kts. (21 MPH)
Water Capacity: 350 Gallons	Fuel Capacity: 1020 Gallons

Accommodations

Total Cabins: 3	Sleeps: 6
-----------------	-----------

Hull and Deck Information

Hull Material: Fiberglass

Engine Information

Engines: 2

Manufacturer: Detroit Diesel

Model: 8V92TI

Engine Type: Inboard

Fuel Type: Diesel

DETAILED INFORMATION

Accommodations

Layout and Accommodations: Standard Hatteras 56 layout that accommodates 6 people in 3 staterooms. Exceptions are: Master Stateroom has a built-in vanity with lights and mirror and drawers aft to starboard. Aft deck has a custom staircase to upper bridge deck, in addition to ladder at lower helm. The bridge deck features a U-shaped seating area with hi/lo table. Wet bar aft of helm includes sink and U-Line Refrigerator/Ice maker. Aft is a 1983 13' Boston Whaler with outboard tender and a Marquipt davit. SILVER TONGUE II is a very original 56 Hatteras with few cosmetic changes found in refit models. She features original woodwork throughout, teak floors in some areas and a unique stairway to the bridge deck.

Electronics

LOWER STATION: Northstar 94iX Furuno LC-90 Furuno GP-70 Data Marine speed & depth indicators Robertson Auto-Pilot Furuno Radar Standard Horizon VHF Ray 400 Hailer **UPPER STATION:** Datamarine speed & depth indicator Robertson Auto-pilot **ELECTRICAL:** 20 KW Onan genset w/1682 hours 21 KW Tropical Diesel electric genset 32V Sentry automatic battery charger 12V Professional Mariner auto battery charger 2500 watt Heart inverter 240/120 AC shore power

Deck Equipment

DECK EQUIPMENT: Ideal electric windlass w/chain & line rode with Suncor 45 lb. stainless steel anchor. Spare Danforth anchor with chain & rope rode Two F/G deck boxes on bow Marquipt 4-step boarding ladder Two Marquipt double fender racks on bow Spare Danforth Anchor Two Marquipt sea stairs Teak handrails with covers Isinglass enclosure across aft deck (2015) Swim platform w/boarding ladder Rayline remote spotlight Bimini top to radar arch & then aft over seating area 2 flybridge cushioned helm seats 13' 1983 Boston Whaler with 1992 40 hp Johnson outboard Cover for bow bench seats, flybridge helm console, U-shaped seats are all new (2015)

Galley

Modern Maid 4 burner electric stove w/oven GE Microwave Oven Stainless steel full size side by side refrigerator w/ice maker and water dispenser. Single stainless steel sink Kitchen Aid trash compactor Black & Decker toaster oven Bosch dishwasher Aft deck chest freezer Aft deck Scotsman Refrigerator & Ice maker Bosch Washer & Dryer

Mechanical

Cruiseair reverse cycle A/C Hot water heater Fire suppression system Airseps Spare props
Village Marine water maker Wilcox Seabrace stabilizers Air compressor Glendinning engine
synchronize ACR 406 EPIRB

Exclusions

Owner's personal belongings.

Disclaimer

The Company offers the details of this vessel or yacht in good faith but cannot guarantee or warrant the accuracy of this information nor warrant the condition of the vessel. A buyer should instruct his representatives, agents, or his surveyors, to investigate such details as the buyer desires validated. This vessel or yacht is offered subject to prior sale, price change, or withdrawal without notice.

PHOTOS

Front View of Flybridge



Forward Deck



Flybridge Helm



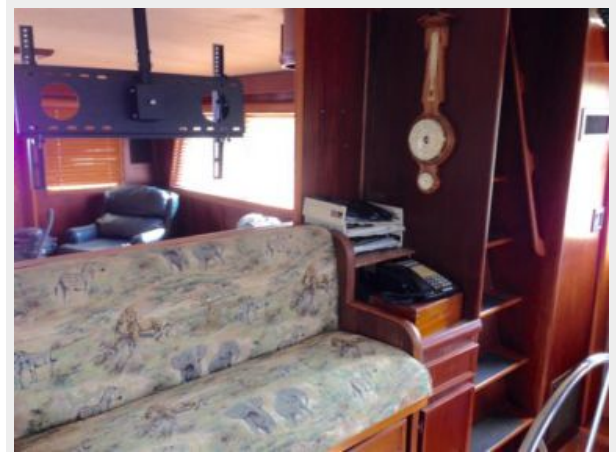
Flybridge Aft



Aft Deck Staircase to Bridgedeck



Lower Helm Bench Seat



Galley



Dinette



Galley



Lower Helm



Master Stateroom



Master Stateroom



Master Stateroom



Master Head



Guest Stateroom #1



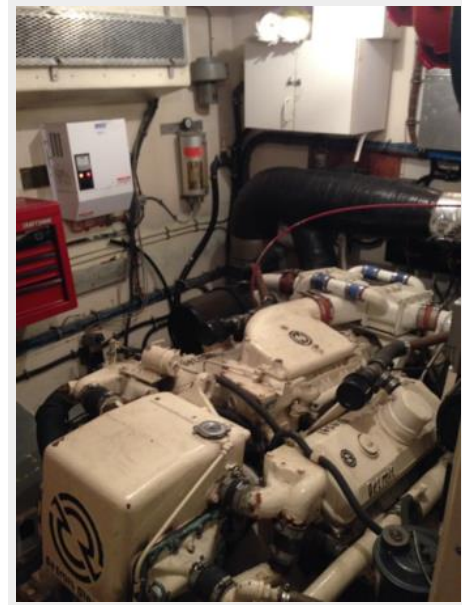
Guest Head



Bow Guest Stateroom #2



Starboard Engine Room



Port Engine Room



CONTACTS

Andrey Shestakov, leading yacht broker of the sales department of Shestakov Yacht Sales Inc. Shestakov Yacht Sales Inc., the official representative of the Miami/Fort Lauderdale FL headquarters.

Contact details

Email: **andrey@shestakovyachtsales.com**

Web: shestakovyachtsales.com/en/

Telephones

USA: **+1(954)274-4435**

Office hours

Monday – Saturday: **9:00 - 21:00 EDT**

Sunday: **closed**

Address



Harbour Towne Marina, 850 NE 3rd St,
STE 213, Dania, FL 33004