

## COOL BREEZE — VIKING



**Builder:** VIKING

**Year Built:** 2008

**Model:** Sport Fisherman

**Price:** PRICE ON APPLICATION

**Location:** United States

**LOA:** 74' 0" (22.56m)

**Beam:** 19' 4" (5.89m)

**Max Draft:** 5' 6" (1.68m)

**Cruise Speed:** 33 Kts. (38 MPH)

**Max Speed:** 40 Kts. (46 MPH)

Our experienced yacht broker, Andrey Shestakov, will help you choose and buy a yacht that best suits your needs **Cool Breeze — VIKING** from our catalogue. Presently, at Shestakov Yacht Sales Inc., we have a wide variety of yachts available on our sale's list. We also work in close contact with all the big yacht manufacturers from all over the world.

If you would like to buy a yacht **Cool Breeze — VIKING** or would like help answering any questions concerning purchasing, selling or chartering a yacht, please call **+1(954)274-4435**

# TABLE OF CONTENTS

TABLE OF CONTENTS	2
SPECIFICATIONS	5
Basic Information	5
Dimensions	5
Speed, Capacities and Weight	5
Accommodations	5
Hull and Deck Information	5
Engine Information	6
DETAILED INFORMATION	7
Salon	7
Salon Day Head	7
Galley & Dinette	7
Companionway	8
Master Stateroom (Midship)	8
Master Head	9
VIP Stateroom, Forward	9
Forward Guest Head	9
Port Stateroom	10
Port Guest Head	10
Starboard Stateroom, Aft	10
Crew Stateroom	10
Crew Head	11
Enclosed Flybridge	11
Electronics & Navigational Equipment	11
Skybridge	12
Cockpit	13
Engine Room & Mechanical Equipment	13
Broker Remarks	14

Exclusions	15
Disclaimer	15
PHOTOS	16
Salon	16
Salon	16
Salon	16
Salon	16
Salon	16
Galley	16
Galley	17
Galley	17
Dinette	17
Dinette	17
Day Head	18
Companionway	18
Laundry Center	18
Master Stateroom	18
Master Stateroom	19
Master Stateroom	19
Master Stateroom	19
Master Stateroom	19
Master Stateroom	19
Master Head	19
Master Head	20
Forward Stateroom	20
Forward Stateroom	20
Forward Stateroom	20
Forward Head	21
Forward Port Guest Stateroom	21

Forward Port Guest Stateroom	21
Mid Starboard Guest Stateroom	21
Crew Head	22
Mid Starboard Guest Stateroom	22
Crew Quarters	22
Enclosed Flybridge	22
Enclosed Flybridge	23
Enclosed Flybridge	23
Aft Deck	23
Aft Deck	23
Aft Deck	23
Skybridge	23
Skybridge	24
Skybridge	24
Skybridge	24
Engine Room	24
Engine Room	24
Engine Room	24
Stern	25
Bow Profile	25
Cool Breeze	25
CONTACTS	26
Contact details	26
Telephones	26
Office hours	26
Address	26

---

# SPECIFICATIONS

---

## Basic Information

---

**Category:** Sport Fisherman

**Model Year:** 2009

**Year Built:** 2008

**Country:** United States

**Fly Bridge:** Yes

**Cockpit:** Yes

## Dimensions

---

**LOA:** 74' 0" (22.56m)

**Beam:** 19' 4" (5.89m)

**Max Draft:** 5' 6" (1.68m)

## Speed, Capacities and Weight

---

**Cruise Speed:** 33 Kts. (38 MPH)

**Max Speed:** 40 Kts. (46 MPH)

**Displacement:** 135000 Pounds

**Water Capacity:** 385 Gallons

**Fuel Capacity:** 3000 Gallons

## Accommodations

---

**Total Cabins:** 5

## Hull and Deck Information

---

**Hull Material:** Fiberglass

---

## Engine Information

---

**Engines:** 2

**Manufacturer:** MTU

**Model:** 16V2000M93

**Engine Type:** Inboard

**Fuel Type:** Diesel

---

# DETAILED INFORMATION

---

## Salon

---

- Gloss Teak interior wood
- Air conditioning controls
- Hunter Douglas silhouette blinds
- Spiral staircase to bridge
- Carpeting with lead lined padding for sound absorption
- Teak salon cocktail table
- Oversized L-shaped salon sofa finished in Ultra-leather with storage underneath
- Amtico flooring at entryway
- Fixed frameless side windows with tinted, tempered glass for style, natural lighting, and privacy
- Home theater with 50" Plasma TV on an actuated raise and lower mechanism
- Xenon overhead lighting recessed in the headliner with dimmer switches, and indirect rope lighting behind the valances
- Main electrical service panel in cabinet at entryway
- Electric sliding entryway door
- Teak cabinetry with drawer, open storage, and bottle storage
- Teak salon valance boards
- Carpet runner
- Octoplex
- Spiral stairwell to bridge

## Salon Day Head

---

- Mirrored ceiling
- Custom Amtico flooring
- Towel bars and rings
- Satin nickel faucet
- Granite vanity top
- Head hunter head
- (2) Oversized storage lockers
- Electrical storage room behind head

## Galley & Dinette

---

- Custom Amtico flooring
- Custom galley island with Sub Zero under the counter refrigeration and freezer drawers

- Dinette couch with removable cushions and storage underneath
- Teak dinette table with thru-bolted teak pedestal
- Surface mounted electric cooktop
- Galley exhaust fan
- Built in oven
- Custom granite galley countertops
- Overhead Xenon lights with dimmer switches
- Garbage disposal
- Sharp carousel microwave/convection oven located in upper galley cabinet
- Stainless steel galley sink
- Storage cabinets in upper galley with deep pull-out drawer with ball bearing slides for smooth movement and latches to keep drawers in place while underway
- Storage cabinets and drawers in lower galley for utensils and other items
- Kenmore trash compactor
- Kitchen Aide Dishwasher
- Custom teak backsplash

---

## Companionway

---

- Snow White awlgrip bilge areas with access hatches and lighted for ease of maintenance and cleaning
- Carpeting from the galley throughout the companionway hall
- Vertical teak decorative strips between wall panels
- Central vacuum unit connection with accessories
- Curved staircase with banister along starboard hull side
- Laundry center with stackable Whirlpool washer and dryer behind teak door
- Lighting is overhead Xenon lights recessed in the headliner
- Wall panels and headliner are individually installed with Velcro backing for ease of accessibility
- Water tank level gauge and pump indicator located in sub-panel in companionway
- Carpet runner

---

## Master Stateroom (Midship)

---

- King-size, walk-around bed facing fore and aft with lift up top with gas pistons and maple lined storage compartment underneath and (2) storage drawers
- Memory foam mattress
- Mirrored wall behind custom upholstered headboard
- Entry credenza with drawer storage
- Bose lifestyle entertainment system
- Air conditioning controls
- Carpeting



- Twin maple lined hanging closets
- Custom teak vanity
- Custom designer bedspread
- Xenon lights and decorative indirect rope lighting underneath bed platform
- Port side credenza with drawer storage
- Telephone outlet
- Sharp 32" :LCD flat panel TV
- Wall mounted reading lamps
- Overhead hatch

---

## Master Head

---

- Custom wallpaper
- Custom antico flooring
- Satin nickel shower fixtures
- Granite vanity top
- Mirrored ceiling
- Linen closet
- Large shower
- One-piece shower door

---

## VIP Stateroom, Forward

---

- Centerline queen sized walk around bed with lift up top and maple lined storage underneath and (2) storage drawers
- Xenon lights and decorative indirect rope lighting underneath bed platform
- Stereo speakers recessed in headliner are tied into the salon stereo and feature volume control
- Mirrored area above head of bed
- Air conditioning controls
- Carpeting

---

## Forward Guest Head

---

- Custom wallpaper
- Custom antico flooring
- Satin nickel shower fixtures
- Granite vanity top
- Brushed aluminum shower door
- Overhead lighting

- Custom designer bedspread
- Spacious maple-lined hanging locker with bar for hanging clothes
- Port and starboard storage cabinets
- (2) Overhead reading lights with switches
- LCD Flat panel TV
- Teak storage shelf

---

## Port Stateroom

---

- Upper/lower bunks
- Hanging locker
- Storage drawers
- Stereo speakers
- Flat panel TV
- A/C controls

---

## Port Guest Head

---

- Teak face on lower vanity
- Custom Amtico flooring
- Chrome shower door
- Satin nickel shower fixtures
- Brushed nickel towel bars and rings
- Satin nickel faucet
- Granite vanity top

---

## Starboard Stateroom, Aft

---

- Upper/lower berths with storage below
- Hanging locker
- A/C controls

---

## Crew Stateroom

---

- Upper/lower berths with storage below
- Additional telephone outlet
- Teak drawer storage
- Cabinets in crew head
- Flatscreen TV
- Private head

- Storage
- Engine room access

---

## Crew Head

---

- Custom Amtico flooring
- Teak face on lower vanity
- Chrome frame shower door
- Satin nickel faucet
- Granite vanity top

---

## Enclosed Flybridge

---

- Raised wrap-around helm console with black ultra-leather surfaces to reduce glare and hold an excessive amount of electronics
- Air conditioned with reverse cycle heat, temperature control and dehumidification mode
- Elevated L-shape sofa lounge with custom ultra-leather and storage beneath
- Teak cocktail table
- Companion seats both port and starboard side
- Black ultra-leather Stidd adjustable helm chair
- Overhead recessed Xenon lighting
- Large under helm storage area
- Forward main steering station. See electronics section for full breakdown of electronics
- Fly bridge U-Line wine chiller
- Fly bridge 20" Sharp LCD flat panel TV
- Upholstered overhead wiper box with switches mounted centerline.
- Upholstered window valances
- Carpeting
- Fixed side and aft windows
- Tempered curved windshield made of laminated safety glass
- Weatherproof lockable fly bridge door to upper aft deck
- Central vacuum connection
- Molded fiberglass seat on the aft observation deck with cushion and storage underneath
- Pod style aft docking station with surface mounted controls on upper observation deck
- Quartz light sin overhang
- Upper aft deck stereo speakers
- Aft deck camera

---

## Electronics & Navigational Equipment

---

- Furuno Navnet 3D black box processor

- VEI 17DMSUN 17" LCD marine monitor
- Sirius Satellite weather receiver
- VEI 17" LCD marine monitor
- FURUNO 4.6" Mono screen LCD auto pilot system
- ICOM 604 VHF
- 24" Tracvision GLA system w/dual LNB & Gyro
- (3) DirectTV latin America receivers
- KVH 24" Dummy Satellite Dome
- Inmarsat tracphone with compact dome
- Marantz I-POD docking station
- Color 2.0 MM polarized lens
- Cockpit camera
- 4MM color camera
- Salon camera facing door
- Bronze thru hull under water camera
- Quad camera switcher

#### Primary Radar System

- Furuno 96 N.M. 25KW UHD radar, Ultra High definition radar with ARPA
- Furuno 6' Open radar Array
- Furuno Navnet 3D Black box processor
- VEI 17" LCD marine monitor

#### Secondary Radar System

- Furuno 48 N.M. 4KW UHD radar w/3.5' Array
- VEI 17" LCD marine monitor

#### Skybridge Electronics

- Furuno Navnet 3D MFD/chart plotter 12.1"
- 4.6" Auto pilot second station display
- ICOM VHF second station

## Skybridge

---

- Viking installed hardtop with overhead lighting
- Electric lift console with engine display
- (2) Teak helm chairs
- Wrap-around cushioned seating

---

## Cockpit

---

- Observation mezzanine with starboard aft facing lounge seat with covered cushions, hinged seats with storage under lounge area, tackle cabinet with pull-out drawers and 2 large bait freezers
- Teak cockpit and mezzanine flooring
- Cable TV and telephone connections in cabinet under starboard gunwale and wired to a home run
- RG6 TV cable to accommodate SAT system
- Cabinet with storage for gaffs and other items under gunwale
- Dockside electric connections (2) 50amp/220v electric Glenndinning cablemasters
- Dockside water connection
- Electric sliding salon door
- Engine room access hatch
- extended flybridge overhand for shade
- Freshwater wash down with hose bib located under gunwale
- Grab rails at cockpit haunches
- Rope lighting underneath coaming
- One-piece aluminum ladder to flybridge
- Cockpit lazarette hatch with access to steering, trim tabs, and drain pumps
- In-deck storage boxes
- Recessed in-deck fish box, insulated and removable with pump out and drain plate with large holes for easy pump out and cleaning
- Refrigerated mezzanine step box cooler
- (4) Rod holders on covering boards
- Rounded cockpit coaming
- Sea water wash down with pump in engine room and supply at cockpit dockside box
- Self bailing cockpit with oversized scuppers
- Side lockers
- Stainless steel reinforced clears and recessed hawse pipes
- Stainless steel gas hinges on hatches and lids
- Cockpit speakers
- Storage locker with shelf and push release door molded port side of salon steps
- Walkthrough transom door with lift gate
- W-valve for fresh and salt water wash downs

---

## Engine Room & Mechanical Equipment

---

- MTU16V2000 M93 2400HP with 1200 hours
- Trolling valves
- Bow thruster
- Chilled water air conditioning (2) 4-ton units zoned with reverse cycle heat for complete

climate control throughout the interior with individual control units throughout the staterooms and salon

- Bilge pumps with additional clean out pumps in keel area linked into monitoring system and connected to float switches for automatic and manual operation
- Delta T engine room ventilation system
- Dual stage 110V A/C fresh water pump and cockpit dockside supply inlet with pressure reducing valve
- Engine room gauge package
- External sea strainers for main engine pick ups
- Fiberglass side thru hulls
- Fire suppression system tied into main engines and gensets ignition systems with override
- Fresh water filter
- Fresh water supply in engine room
- Fuel and oil lines are flexible steel reinforced USCG approved
- Electric fuel priming pumps
- Fuel transfer system
- Hour meters on mains and generators
- Hydraulic emergency bilge pump manifold to forward, engine room, and cockpit bilges
- Internal sea strainers for generator, air conditioning and all other sea water pickups
- Linear exhaust with oval outflows
- Oil changing system with pump out line in cockpit
- PEX plumbing fresh water system with manifold system to isolate individual areas
- Power assisted hydraulic steering
- Five-blade Nibral propellers
- Dual Racor fuel/water separators
- Rudders are stainless steel with dripless thru-water and Rides Marine bearing for ease of maintenance
- Seacocks are bronze, ball type sea valves for all thru hulls below the water line Awlgrippd white
- Shafts are Aquamet high-strength stainless steel, double taper with machines keyway and custom thrust plate at main engine coupling
- Structural steel engine beds mounted to transverse intermediate bulkheads to isolate torque and vibration/engine room noise and ensure drive train alignment
- Tides Marine water lubricated dripless shaft seals with crossover water supply from both engines
- Trim tabs are dual piston with center tab recessed in transom
- 30-Gallon water heater

---

## Broker Remarks

---

Cool Breeze is a must see 2009 74' Viking Enclosed bridge with low original hours. Built with MTU 2400HP engines with only 1200 hours, and the popular 5 stateroom layout. She boasts (2) 32kW generators, Eskimo Ice machine, watermaker, custom skybridge, teak deck, extensive

electronics, A/V package and much more!

## **Exclusions**

---

Owner's personal belongings.

## **Disclaimer**

---

The Company offers the details of this vessel or yacht in good faith but cannot guarantee or warrant the accuracy of this information nor warrant the condition of the vessel. A buyer should instruct his representatives, agents, or his surveyors, to investigate such details as the buyer desires validated. This vessel or yacht is offered subject to prior sale, price change, or withdrawal without notice.

# PHOTOS

Salon



Salon



Salon



Salon



Salon



Galley





**Galley**



**Galley**



**Dinette**



**Dinette**



**Day Head**



**Companionway**



**Laundry Center**



**Master Stateroom**



**Master Stateroom**



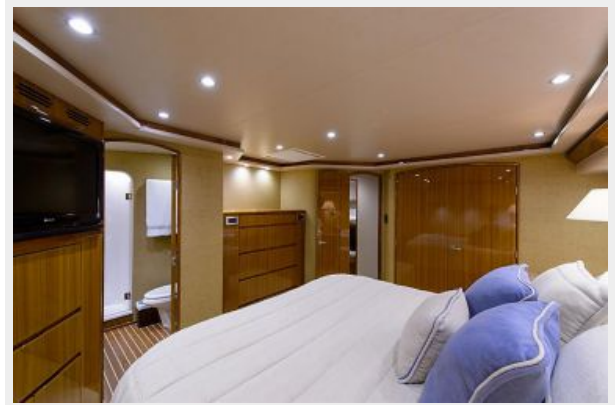
**Master Stateroom**



**Master Stateroom**



**Master Stateroom**



**Master Stateroom**



**Master Head**



**Master Head**



**Forward Stateroom**



**Forward Stateroom**



**Forward Stateroom**



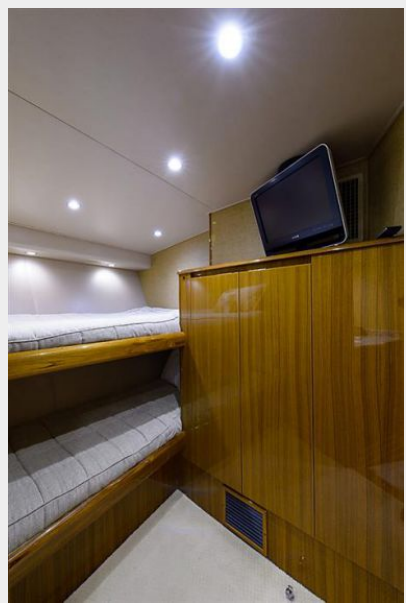
**Forward Head**



**Forward Port Guest Stateroom**



**Forward Port Guest Stateroom**



**Mid Starboard Guest Stateroom**



**Mid Starboard Guest Stateroom**



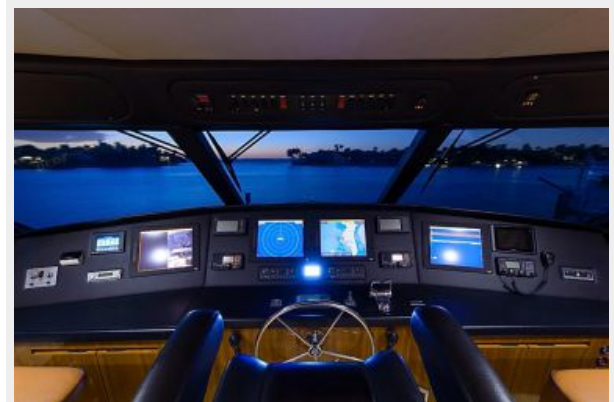
**Crew Head**



**Crew Quarters**



**Enclosed Flybridge**



**Enclosed Flybridge**



**Enclosed Flybridge**



**Aft Deck**



**Aft Deck**



**Aft Deck**



**Skybridge**



**Skybridge**



**Skybridge**



**Skybridge**



**Engine Room**



**Engine Room**



**Engine Room**





**Stern**



**Bow Profile**



**Cool Breeze**



# CONTACTS

---

Andrey Shestakov, leading yacht broker of the sales department of Shestakov Yacht Sales Inc. Shestakov Yacht Sales Inc., the official representative of the Miami/Fort Lauderdale FL headquarters.

## Contact details

---

Email: [andrey@shestakovyachtsales.com](mailto:andrey@shestakovyachtsales.com)

Web: [shestakovyachtsales.com/en/](http://shestakovyachtsales.com/en/)

## Telephones

---

USA: +1(954)274-4435

## Office hours

---

Monday – Saturday: **9:00 - 21:00** EDT

Sunday: **closed**

## Address

---



Harbour Towne Marina, 850 NE 3rd St,  
STE 213, Dania, FL 33004