

## COOL BREEZE — VIKING



**Судостроитель:** VIKING

**Год постройки:** 2008

**Модель:** Катер для спортивной рыбалки

**Цена:** **ЦЕНА ЯХТЫ ПО ЗАПРОСУ**

**Местонахождение:** United States

**Длина общая:** 74' 0" (22.56m)

**Ширина:** 19' 4" (5.89m)

**Макс. осадка:** 5' 6" (1.68m)

**Крейс. скорость:** 33 Kts. (38 MPH)

**Макс. скорость:** 40 Kts. (46 MPH)

Купить **Cool Breeze — VIKING** а также выбрать подходящую вам яхту из нашего каталога яхт вам поможет опытный яхтенный брокер Андрей Шестаков. На сегодняшний день компания **Shestakov Yacht Sales Inc.** имеет большое количество яхт в собственном списке продаж, а также тесно сотрудничает со всеми крупными яхтенными производителями по всему миру.

Для того чтобы купить яхту **Cool Breeze — VIKING** а также проконсультироваться по любому вопросу связанному с покупкой, продажей, чартером яхт позвоните по телефону **+7(918)465-66-44**.

# ОГЛАВЛЕНИЕ

---

|                                      |    |
|--------------------------------------|----|
| ОГЛАВЛЕНИЕ                           | 2  |
| ХАРАКТЕРИСТИКИ                       | 5  |
| Основная информация                  | 5  |
| Размеры                              | 5  |
| Скорость, вместимость и масса        | 5  |
| Размещение                           | 5  |
| Корпус и палуба                      | 5  |
| Информация о двигателе               | 6  |
| ПОДРОБНОЕ ОПИСАНИЕ                   | 7  |
| Salon                                | 7  |
| Salon Day Head                       | 7  |
| Galley & Dinette                     | 7  |
| Companionway                         | 8  |
| Master Stateroom (Midship)           | 8  |
| Master Head                          | 9  |
| VIP Stateroom, Forward               | 9  |
| Forward Guest Head                   | 9  |
| Port Stateroom                       | 10 |
| Port Guest Head                      | 10 |
| Starboard Stateroom, Aft             | 10 |
| Crew Stateroom                       | 10 |
| Crew Head                            | 11 |
| Enclosed Flybridge                   | 11 |
| Electronics & Navigational Equipment | 11 |
| Skybridge                            | 12 |
| Cockpit                              | 13 |
| Engine Room & Mechanical Equipment   | 13 |
| Broker Remarks                       | 14 |

|                              |    |
|------------------------------|----|
| Исключения                   | 15 |
| Отказ от ответственности     | 15 |
| ФОТОГРАФИИ                   | 16 |
| Salon                        | 16 |
| Salon                        | 16 |
| Salon                        | 16 |
| Salon                        | 16 |
| Salon                        | 16 |
| Galley                       | 16 |
| Galley                       | 17 |
| Galley                       | 17 |
| Dinette                      | 17 |
| Dinette                      | 17 |
| Day Head                     | 18 |
| Companionway                 | 18 |
| Laundry Center               | 18 |
| Master Stateroom             | 18 |
| Master Stateroom             | 19 |
| Master Stateroom             | 19 |
| Master Stateroom             | 19 |
| Master Stateroom             | 19 |
| Master Stateroom             | 19 |
| Master Head                  | 19 |
| Master Head                  | 20 |
| Forward Stateroom            | 20 |
| Forward Stateroom            | 20 |
| Forward Stateroom            | 20 |
| Forward Head                 | 21 |
| Forward Port Guest Stateroom | 21 |

|                               |           |
|-------------------------------|-----------|
| Forward Port Guest Stateroom  | 21        |
| Mid Starboard Guest Stateroom | 21        |
| Crew Head                     | 22        |
| Mid Starboard Guest Stateroom | 22        |
| Crew Quarters                 | 22        |
| Enclosed Flybridge            | 22        |
| Enclosed Flybridge            | 23        |
| Enclosed Flybridge            | 23        |
| Aft Deck                      | 23        |
| Aft Deck                      | 23        |
| Aft Deck                      | 23        |
| Skybridge                     | 23        |
| Skybridge                     | 24        |
| Skybridge                     | 24        |
| Skybridge                     | 24        |
| Engine Room                   | 24        |
| Engine Room                   | 24        |
| Engine Room                   | 24        |
| Stern                         | 25        |
| Bow Profile                   | 25        |
| Cool Breeze                   | 25        |
| <b>КОНТАКТЫ</b>               | <b>26</b> |
| Контактная информация         | 26        |
| Телефоны                      | 26        |
| Время работы                  | 26        |
| Адрес                         | 26        |

# ХАРАКТЕРИСТИКИ

## Основная информация

**Тип судна:** Катер для спортивной рыбалки

**Модельный год:** 2009

**Год постройки:** 2008

**Страна:** United States

**Открытая палуба мостика:** Да

**Кубрик:** Да

## Размеры

**Длина общая:** 74' 0" (22.56m)

**Ширина:** 19' 4" (5.89m)

**Макс. осадка:** 5' 6" (1.68m)

## Скорость, вместимость и масса

**Крейс. скорость:** 33 Kts. (38 MPH)

**Макс. скорость:** 40 Kts. (46 MPH)

**Водоизмещение:** 135000 Pounds

**Вместимость воды:** 385 Gallons

**Объем топливного бака:** 3000 Gallons

## Размещение

**Всего кают:** 5

## Корпус и палуба

**Материал корпуса:** Fiberglass

## Информация о двигателе

---

**Двигатели:** 2

**Производитель:** MTU

**Модель:** 16V2000M93

**Тип двигателя:** Inboard

**Тип топлива:** Diesel

---

# ПОДРОБНОЕ ОПИСАНИЕ

---

## Salon

---

- Gloss Teak interior wood
- Air conditioning controls
- Hunter Douglas silhouette blinds
- Spiral staircase to bridge
- Carpeting with lead lined padding for sound absorption
- Teak salon cocktail table
- Oversized L-shaped salon sofa finished in Ultra-leather with storage underneath
- Amtico flooring at entryway
- Fixed frameless side windows with tinted, tempered glass for style, natural lighting, and privacy
- Home theater with 50" Plasma TV on an actuated raise and lower mechanism
- Xenon overhead lighting recessed in the headliner with dimmer switches, and indirect rope lighting behind the valances
- Main electrical service panel in cabinet at entryway
- Electric sliding entryway door
- Teak cabinetry with drawer, open storage, and bottle storage
- Teak salon valance boards
- Carpet runner
- Octoplex
- Spiral stairwell to bridge

## Salon Day Head

---

- Mirrored ceiling
- Custom Amtico flooring
- Towel bars and rings
- Satin nickel faucet
- Granite vanity top
- Head hunter head
- (2) Oversized storage lockers
- Electrical storage room behind head

## Galley & Dinette

---

- Custom Amtico flooring
- Custom galley island with Sub Zero under the counter refrigeration and freezer drawers

- Dinette couch with removable cushions and storage underneath
- Teak dinette table with thru-bolted teak pedestal
- Surface mounted electric cooktop
- Galley exhaust fan
- Built in oven
- Custom granite galley countertops
- Overhead Xenon lights with dimmer switches
- Garbage disposal
- Sharp carousel microwave/convection oven located in upper galley cabinet
- Stainless steel galley sink
- Storage cabinets in upper galley with deep pull-out drawer with ball bearing slides for smooth movement and latches to keep drawers in place while underway
- Storage cabinets and drawers in lower galley for utensils and other items
- Kenmore trash compactor
- Kitchen Aide Dishwasher
- Custom teak backsplash

## Companionway

---

- Snow White awlgrip bilge areas with access hatches and lighted for ease of maintenance and cleaning
- Carpeting from the galley throughout the companionway hall
- Vertical teak decorative strips between wall panels
- Central vacuum unit connection with accessories
- Curved staircase with banister along starboard hull side
- Laundry center with stackable Whirlpool washer and dryer behind teak door
- Lighting is overhead Xenon lights recessed in the headliner
- Wall panels and headliner are individually installed with Velcro backing for ease of accessibility
- Water tank level gauge and pump indicator located in sub-panel in companionway
- Carpet runner

## Master Stateroom (Midship)

---

- King-size, walk-around bed facing fore and aft with lift up top with gas pistons and maple lined storage compartment underneath and (2) storage drawers
- Memory foam mattress
- Mirrored wall behind custom upholstered headboard
- Entry credenza with drawer storage
- Bose lifestyle entertainment system
- Air conditioning controls
- Carpeting



- Twin maple lined hanging closets
- Custom teak vanity
- Custom designer bedspread
- Xenon lights and decorative indirect rope lighting underneath bed platform
- Port side credenza with drawer storage
- Telephone outlet
- Sharp 32" :LCD flat panel TV
- Wall mounted reading lamps
- Overhead hatch

---

## Master Head

---

- Custom wallpaper
- Custom antico flooring
- Satin nickel shower fixtures
- Granite vanity top
- Mirrored ceiling
- Linen closet
- Large shower
- One-piece shower door

---

## VIP Stateroom, Forward

---

- Centerline queen sized walk around bed with lift up top and maple lined storage underneath and (2) storage drawers
- Xenon lights and decorative indirect rope lighting underneath bed platform
- Stereo speakers recessed in headliner are tied into the salon stereo and feature volume control
- Mirrored area above head of bed
- Air conditioning controls
- Carpeting

---

## Forward Guest Head

---

- Custom wallpaper
- Custom antico flooring
- Satin nickel shower fixtures
- Granite vanity top
- Brushed aluminum shower door
- Overhead lighting

- Custom designer bedspread
- Spacious maple-lined hanging locker with bar for hanging clothes
- Port and starboard storage cabinets
- (2) Overhead reading lights with switches
- LCD Flat panel TV
- Teak storage shelf

---

## Port Stateroom

---

- Upper/lower bunks
- Hanging locker
- Storage drawers
- Stereo speakers
- Flat panel TV
- A/C controls

---

## Port Guest Head

---

- Teak face on lower vanity
- Custom Amtico flooring
- Chrome shower door
- Satin nickel shower fixtures
- Brushed nickel towel bars and rings
- Satin nickel faucet
- Granite vanity top

---

## Starboard Stateroom, Aft

---

- Upper/lower berths with storage below
- Hanging locker
- A/C controls

---

## Crew Stateroom

---

- Upper/lower berths with storage below
- Additional telephone outlet
- Teak drawer storage
- Cabinets in crew head
- Flatscreen TV
- Private head

- Storage
- Engine room access

---

## Crew Head

---

- Custom Amtico flooring
- Teak face on lower vanity
- Chrome frame shower door
- Satin nickel faucet
- Granite vanity top

---

## Enclosed Flybridge

---

- Raised wrap-around helm console with black ultra-leather surfaces to reduce glare and hold an excessive amount of electronics
- Air conditioned with reverse cycle heat, temperature control and dehumidification mode
- Elevated L-shape sofa lounge with custom ultra-leather and storage beneath
- Teak cocktail table
- Companion seats both port and starboard side
- Black ultra-leather Stidd adjustable helm chair
- Overhead recessed Xenon lighting
- Large under helm storage area
- Forward main steering station. See electronics section for full breakdown of electronics
- Fly bridge U-Line wine chiller
- Fly bridge 20" Sharp LCD flat panel TV
- Upholstered overhead wiper box with switches mounted centerline.
- Upholstered window valances
- Carpeting
- Fixed side and aft windows
- Tempered curved windshield made of laminated safety glass
- Weatherproof lockable fly bridge door to upper aft deck
- Central vacuum connection
- Molded fiberglass seat on the aft observation deck with cushion and storage underneath
- Pod style aft docking station with surface mounted controls on upper observation deck
- Quartz light sin overhang
- Upper aft deck stereo speakers
- Aft deck camera

---

## Electronics & Navigational Equipment

---

- Furuno Navnet 3D black box processor

- VEI 17DMSUN 17" LCD marine monitor
- Sirius Satellite weather receiver
- VEI 17" LCD marine monitor
- FURUNO 4.6" Mono screen LCD auto pilot system
- ICOM 604 VHF
- 24" Tracvision GLA system w/dual LNB & Gyro
- (3) DirectTV latin America receivers
- KVH 24" Dummy Satellite Dome
- Inmarsat tracphone with compact dome
- Marantz I-POD docking station
- Color 2.0 MM polarized lens
- Cockpit camera
- 4MM color camera
- Salon camera facing door
- Bronze thru hull under water camera
- Quad camera switcher

#### Primary Radar System

- Furuno 96 N.M. 25KW UHD radar, Ultra High definition radar with ARPA
- Furuno 6' Open radar Array
- Furuno Navnet 3D Black box processor
- VEI 17" LCD marine monitor

#### Secondary Radar System

- Furuno 48 N.M. 4KW UHD radar w/3.5' Array
- VEI 17" LCD marine monitor

#### Skybridge Electronics

- Furuno Navnet 3D MFD/chart plotter 12.1"
- 4.6" Auto pilot second station display
- ICOM VHF second station

## Skybridge

---

- Viking installed hardtop with overhead lighting
- Electric lift console with engine display
- (2) Teak helm chairs
- Wrap-around cushioned seating

---

## Cockpit

---

- Observation mezzanine with starboard aft facing lounge seat with covered cushions, hinged seats with storage under lounge area, tackle cabinet with pull-out drawers and 2 large bait freezers
- Teak cockpit and mezzanine flooring
- Cable TV and telephone connections in cabinet under starboard gunwale and wired to a home run
- RG6 TV cable to accommodate SAT system
- Cabinet with storage for gaffs and other items under gunwale
- Dockside electric connections (2) 50amp/220v electric Glenndinning cablemasters
- Dockside water connection
- Electric sliding salon door
- Engine room access hatch
- extended flybridge overhand for shade
- Freshwater wash down with hose bib located under gunwale
- Grab rails at cockpit haunches
- Rope lighting underneath coaming
- One-piece aluminum ladder to flybridge
- Cockpit lazarette hatch with access to steering, trim tabs, and drain pumps
- In-deck storage boxes
- Recessed in-deck fish box, insulated and removable with pump out and drain plate with large holes for easy pump out and cleaning
- Refrigerated mezzanine step box cooler
- (4) Rod holders on covering boards
- Rounded cockpit coaming
- Sea water wash down with pump in engine room and supply at cockpit dockside box
- Self bailing cockpit with oversized scuppers
- Side lockers
- Stainless steel reinforced clears and recessed hawse pipes
- Stainless steel gas hinges on hatches and lids
- Cockpit speakers
- Storage locker with shelf and push release door molded port side of salon steps
- Walkthrough transom door with lift gate
- W-valve for fresh and salt water wash downs

---

## Engine Room & Mechanical Equipment

---

- MTU16V2000 M93 2400HP with 1200 hours
- Trolling valves
- Bow thruster
- Chilled water air conditioning (2) 4-ton units zoned with reverse cycle heat for complete

climate control throughout the interior with individual control units throughout the staterooms and salon

- Bilge pumps with additional clean out pumps in keel area linked into monitoring system and connected to float switches for automatic and manual operation
- Delta T engine room ventilation system
- Dual stage 110V A/C fresh water pump and cockpit dockside supply inlet with pressure reducing valve
- Engine room gauge package
- External sea strainers for main engine pick ups
- Fiberglass side thru hulls
- Fire suppression system tied into main engines and gensets ignition systems with override
- Fresh water filter
- Fresh water supply in engine room
- Fuel and oil lines are flexible steel reinforced USCG approved
- Electric fuel priming pumps
- Fuel transfer system
- Hour meters on mains and generators
- Hydraulic emergency bilge pump manifold to forward, engine room, and cockpit bilges
- Internal sea strainers for generator, air conditioning and all other sea water pickups
- Linear exhaust with oval outflows
- Oil changing system with pump out line in cockpit
- PEX plumbing fresh water system with manifold system to isolate individual areas
- Power assisted hydraulic steering
- Five-blade Nibral propellers
- Dual Racor fuel/water separators
- Rudders are stainless steel with dripless thru-water and Rides Marine bearing for ease of maintenance
- Seacocks are bronze, ball type sea valves for all thru hulls below the water line Awlgrippd white
- Shafts are Aquamet high-strength stainless steel, double taper with machines keyway and custom thrust plate at main engine coupling
- Structural steel engine beds mounted to transverse intermediate bulkheads to isolate torque and vibration/engine room noise and ensure drive train alignment
- Tides Marine water lubricated dripless shaft seals with crossover water supply from both engines
- Trim tabs are dual piston with center tab recessed in transom
- 30-Gallon water heater

## Broker Remarks

---

Cool Breeze is a must see 2009 74' Viking Enclosed bridge with low original hours. Built with MTU 2400HP engines with only 1200 hours, and the popular 5 stateroom layout. She boasts (2) 32kW generators, Eskimo Ice machine, watermaker, custom skybridge, teak deck, extensive

electronics, A/V package and much more!

## Исключения

---

При продаже яхты исключаются личные вещи владельца.

## Отказ от ответственности

---

Компания предоставляет описание судна или яхты добросовестно, но не может гарантировать точность этой информации, а также не ручается за техническое состояние. Покупатель должен проинструктировать своих агентов или оценщиков исследовать представленную информацию более подробно, по собственному желанию. Продажа судна или яхты, изменение цены или снятие с продажи будет происходить без предварительного уведомления.

# ФОТОГРАФИИ

Salon



Salon



Salon



Salon



Salon



Galley





**Galley**



**Galley**



**Dinette**



**Dinette**



**Day Head**



**Companionway**



**Laundry Center**



**Master Stateroom**



**Master Stateroom**



**Master Stateroom**



**Master Stateroom**



**Master Stateroom**



**Master Stateroom**



**Master Head**





**Master Head**



**Forward Stateroom**



**Forward Stateroom**



**Forward Stateroom**



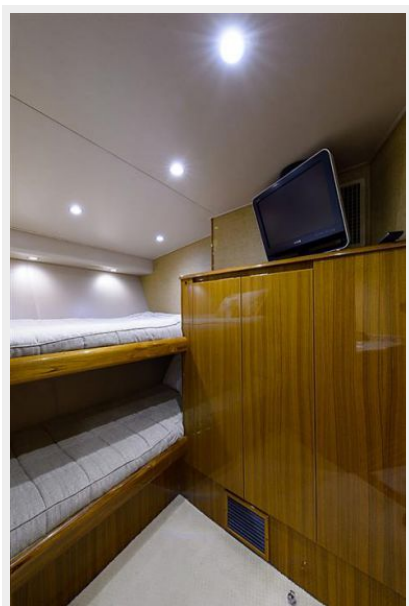
**Forward Head**



**Forward Port Guest Stateroom**



**Forward Port Guest Stateroom**



**Mid Starboard Guest Stateroom**



**Mid Starboard Guest Stateroom**



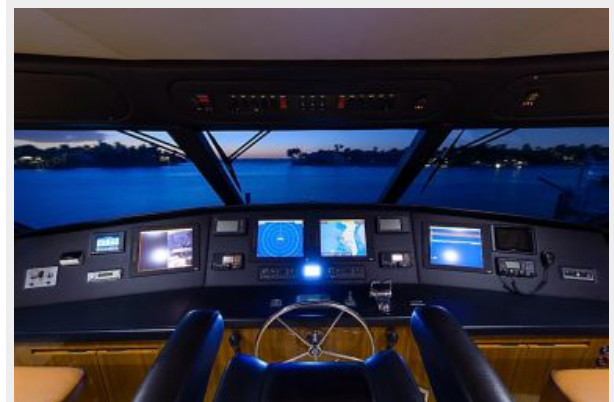
**Crew Head**



**Crew Quarters**



**Enclosed Flybridge**





**Enclosed Flybridge**



**Enclosed Flybridge**



**Aft Deck**



**Aft Deck**



**Aft Deck**



**Skybridge**



**Skybridge**



**Skybridge**



**Skybridge**



**Engine Room**



**Engine Room**



**Engine Room**





**Stern**



**Bow Profile**



**Cool Breeze**



# КОНТАКТЫ

---

Андрей Шестаков (Andrey Shestakov) – ведущий яхтенный брокер отдела продаж яхт и судов компании Shestakov Yacht Sales Inc. Официальный представитель Shestakov Yacht Sales Inc. для русскоговорящих клиентов в центральном офисе компании в Майами/Форт Лодердейл/Флорида/США.

## Контактная информация

---

Email: [andrey@shestakovyachtsales.com](mailto:andrey@shestakovyachtsales.com)

Web: [shestakovyachtsales.com](http://shestakovyachtsales.com)

## Телефоны

---

Краснодарский край: **+7(918)465-66-44**

США, Майами, Флорида: **+1(954)274-4435**

## Время работы

---

Понедельник – Суббота: **9:00 - 21:00**  
EDT

Воскресенье: **Закрито**

## Адрес

---



Harbour Towne Marina, 850 NE 3rd St,  
STE 213, Dania, FL 33004