

## JAMBO — OUTER REEF YACHTS



**Builder:** OUTER REEF YACHTS

**Year Built:** 2012

**Model:** Motor Yacht

**Price:** PRICE ON APPLICATION

**Location:** United States

**LOA:** 72' 0" (21.95m)

**Beam:** 18' 6" (5.64m)

**Min Draft:** 5' 0" (1.52m)

**Cruise Speed:** 12 Kts. (14 MPH)

**Max Speed:** 14 Kts. (16 MPH)

Our experienced yacht broker, Andrey Shestakov, will help you choose and buy a yacht that best suits your needs **JAMBO — OUTER REEF YACHTS** from our catalogue. Presently, at **Shestakov Yacht Sales Inc.**, we have a wide variety of yachts available on our sale's list. We also work in close contact with all the big yacht manufacturers from all over the world.

If you would like to buy a yacht **JAMBO — OUTER REEF YACHTS** or would like help answering any questions concerning purchasing, selling or chartering a yacht, please call **+1(954)274-4435**

# TABLE OF CONTENTS

TABLE OF CONTENTS	2
SPECIFICATIONS	5
Overview	5
Basic Information	5
Dimensions	5
Speed, Capacities and Weight	5
Accommodations	6
Hull and Deck Information	6
Engine Information	6
DETAILED INFORMATION	7
Introduction	7
Pilothouse	7
Electrical System	7
Galley	8
Electronics	9
Interior	10
Fly Bridge	11
Construction	12
Exterior	12
Engines & Mechanical	13
Plumbing & Tankage	14
Tender	15
Captain Quarters	15
Exclusions	16
Disclaimer	16
PHOTOS	17
Accommodations Layout	17
Main Deck Layout	17

Flybridge Layout	17
Salon	17
Salon	17
Galley	17
Galley	18
Galley	18
Galley	18
Pilothouse	18
Pilothouse Helm	18
Pilothouse	18
Day Head	19
Pilothouse Aft to Salon	19
Master SR	19
Master SR	19
Master SR	19
VIP Stateroom	19
VIP Head	20
Guest Stateroom	20
Guest Stateroom	20
Guest Head	20
Companionway	20
Master SR	20
MSR Closet	21
Master SR	21
Laudry	21
Access to Engine Room from MSR	21
Master Head	22
Laundry Crew	22
Stairs to Crew and Engine Room	22

Flybridge helm seating	22
Flybridge Helm	22
Flybridge	22
Flybridge	23
Flybridge	23
Fore Deck	23
Boat Deck	23
Davit Boat Deck	23
Portuguese Bow	23
Side Deck w/Wing doors	24
Dual upgrated Anchors	24
Stairs to Flybridge	24
Aft Deck	24
Aft Deck	25
Aft Deck	25
Aft Deck	25
Aft Deck	25
Engine Room	25
Engine Room	25
SS Hose reel	26
Engine Room	26
Transom w/Crew access	26
Transom	26
CONTACTS	27
Contact details	27
Telephones	27
Office hours	27
Address	27

# SPECIFICATIONS

## Overview

British Virgin Islands flagged; US duty has been paid.

## Basic Information

Category: Motor Yacht	Sub Category: Long Range Cruiser
Model Year: 2012	Year Built: 2012
Country: United States	Vessel Top: Hardtop
Fly Bridge: Yes	

## Dimensions

LOA: 72' 0" (21.95m)	LWL: 65' 0" (19.81m)
Beam: 18' 6" (5.64m)	Min Draft: 5' 0" (1.52m)
MFG Length: 72' 0" (21.95m)	

## Speed, Capacities and Weight

Cruise Speed: 12 Kts. (14 MPH)	Cruise Speed RPM: 1900 Kts.
Max Speed: 14 Kts. (16 MPH)	Max Speed RPM: 2300 Kts.
Displacement: 110 Pounds	Water Capacity: 400 Gallons
Holding Tank: 200 Gallons	Fuel Capacity: 2350 Gallons

---

## Accommodations

---

**Total Cabins:** 3

**Total Berths:** 3

**Sleeps:** 6

**Total Heads:** 5

**Crew Cabin:** 1

**Crew Berths:** 1

**Crew Sleeps:** 2

**Crew Heads:** 1

---

## Hull and Deck Information

---

**Hull Material:** Fiberglass

**Deck Material:** Teak

**Hull Color:** White

**Hull Finish:** Stainless Steel

**Exterior Designer:** Outer Reef

---

## Engine Information

---

**Engines:** 2

**Manufacturer:** Caterpillar

**Model:** C-12

**Engine Type:** Inboard

**Fuel Type:** Diesel

---

# DETAILED INFORMATION

---

## Introduction

---

Built for two USCG 100-ton Captains with more than 60 years combined cruising experience, JAMBO is a safe, comfortable, functional, and reliable Trawler easily handled by two. All major systems are redundant including fresh water, macerators, A/C and hydraulic cooling pumps. The large stabilizer fins and upgraded C-12 Caterpillar engines with a Cat Platinum warranty until February 2017, ensure comfort in heavy seas and allow easy cruising from 9-14 knots with an extended range to 1500 Miles. Entertaining is a pleasure with the country kitchen galley and custom wine storage and refrigeration. JAMBO is maintained in Bristol condition and her maintenance records are available for inspection. JAMBO is the best equipped trawler for her size on the market.

## Pilothouse

---

- 500NX Slimline STIDD helm seat, low back with Ultra Leather seat and deluxe base; UPGRADE
- Additional STIDD helm seat low back with Ultra Leather seat and deluxe base; UPGRADE
- CruisAir defrosters for pilothouse forward facing windows; UPGRADE
- Dutch doors in pilothouse both port and starboard; UPGRADE
- Water Maker remote control unit at helm; UPGRADE

## Electrical System

---

- GOST security system
- Main electric distribution panel with gauges and circuit breakers for 230/15v AC and 24/12v DC system (AC panel can be used with either 50 amps or 100 amps) and auxiliary 30 AMP shore connector; UPGRADE
- Accessible wiring raceway throughout
- Batteries in FRP boxes
- (4) Additional AGM house batteries; UPGRADE
- (2) Balmar 140 AMP Cruising Alternators with Balmar Centerfielder balancing systems; UPGRADE
- Battery chargers - one 24v and one 12v
- (2) Battery isolators
- Aqualuma 3 Series underwater lights; UPGRADE
- Glenndinning 50 amp cable master with 75' of cable on transom with additional 50 amp shore power inlet
- Glenndinning - additional 25' cable (total of 100') for cabledmaster aft; UPGRADE
- Charles ISO boost, 50 amp rating transformer; UPGRADE
- Blowers in engine room - two 115v AC and two 24v DC

- Blowers for head ventilation - three 24v DC
- Converter - 24v DC to 12v DC
- Copper bonding system to all underwater fittings with zinc anodes and DYNA plate for SSB; UPGRADE
- Electrical outlets - 115v AC throughout; GF outlets for heads and exterior
- Engine battery interconnection system
- Inlet for tv/cable, phone on transom
- Xantrex XW4024 4.0 kw inverter/charge
- Kohlenburg D-OA dual-trumpet air horn with compressor
- 24v DC chart light
- 24v DC courtesy/step lights throughout and automatic in wardrobe
- 24v DC overhead LED fixtures throughout
- 24v DC rope style valance at salon and staterooms
- 30 Amp plug that feeds the A/C panel with a dedicated rotary switch; UPGRADE
- LED lighting; UPGRADE
- Dimmer switches; UPGRADE
- Aqua Signal navigation lights
- (2) Prop shaft brushes
- Shoreline power transfer rotary switches
- (2) Shore power inlets added with select switch at fore deck; UPGRADE
- Windshield wipers - (3) Exalto dual speed self-parking with wash down system

## Galley

---

- Teak panel inserts on appliance doors; UPGRADE
- Teak panel inserts on refrigerator, dishwasher, trash compactor, icemaker, and wine cooler; UPGRADE
- GE Stainless 36" counter depth side x side refrigerator
- GE Stainless Monogram 18" dishwasher with stainless interior
- GE Stainless Monogram 30" built-in microwave
- GE Stainless Advantium 30" electric with trivection slide-in range
- GE Stainless Monogram 15" trash compactor
- DANBY 8 cubic ft freezer; UPGRADE
- Stainless steel KitchenAid under counter refrigerator in crew quarters; UPGRADE
- 30" KitchenAid built-in microwave in crew quarters; UPGRADE
- (2) Sets Bosche Axxis washers and dryers; UPGRADE
- Bosche Axxis stacking kit with pull-out tray; UPGRADE
- U-Line stainless steel wine cooler with wood trim; 29 bottle capacity; UPGRADE
- Instant Hot at galley sink; UPGRADE
- Seagull Water purification system; UPGRADE
- Garbage disposal at galley sink; UPGRADE



- Spice cabinet in galley; 6" wide pullout locker next to stove; UPGRADE
- SS Kohler under mount sinks
- Grohe Europlus II faucet in galley with pull-out chrome spray

## Electronics

---

- (2) Danforth 5" magnetic compasses
- Paradox Marine Security System inclusive of main unit; Cell Modem and 5 Exterior door sensors
- Furuno NavNet 3D black box mfd processor
- Furuno Nav 3D uhd, 12kw, 72 NM 6' array
- Furuno Nav 3D keyboard
- Furuno BBW GPS WASS gps antenna; WAAS gps 12 channel receiver
- Furuno PG 500R heading sensor
- Furuno GP 33 WAAS color interface gps; 4.3" lcd
- Furuno DFF1 digital network sounder VX2; 600 watt 1kw output power, 50/200 kHz at pilothouse
- Furuno RD33 NMEA repeater color display at lower helm
- Furuno RD33 NMEA repeater color display at upper helm - depth speed and temperature
- Furuno RD33 NMEA repeater color display at upper helm - depth only
- Furuno 235 - MSLF 235khz smart sensor
- Furuno F10 wind display; analog apparent wind direction, digital wind speed, 12vdc at lower helm
- Airmar PB200 at hard top
- Furuno NavPilot 500 controller, processor rfb, rate sensor at lower helm
- Furuno NavPilot 500 second station control, large screen, at upper helm
- KEP Marine Pilot GB-17 pilothouse glass board display; 17" lcd tft monitor +3 vga at pilothouse
- KEP Marine KEPM -15 sunlight readable display; 15" sunlight monitor +2 vga at upper helm
- (2) ICOM IC-M604 black VHF radio, class d dsc, 22 watt hailer, fog horn at upper and lower helm
- ICOM Command MIC III black full function remote mic, jog dial, hailer control at upper and lower helm
- Newmar hailer horn 60/40; 40 watt, 60 peak, lexan abs, commercial at hard top
- ICOM M802 150 watt SSB transceiver, one-touch email access at lower helm
- Newmar 32-12-50 DC-DC converter
- Furuno FA 150 AIS system class a uais, uscg, imo approved, required VHF antenna at pilothouse
- Ericsson W35 quad band cell with wireless data; requires data plan cellular data and voice
- Digital cell booster wireless; 50db booster, 1 room, includes antenna, cellular data and voice
- Wireless bridge MWB-250 marine wireless bridge; dockside wireless data throughout boat

- Network A/B/C switch; manual network switch; data selector - sat, dockside wireless, cell wireless
- KVH FB150 sat phone Inmarsat; fleet 150 satellite phone, up to 150 kpbs, voice, sms; fixed mount satellite phone, voice and data
- KVH dummy dome M7; empty dome for dual antenna mounts; fb150 inside empty dome
- Panasonic PH 824 ADV hybrid KSU phone/intercom system
- Panasonic PH 7731-B speaker phone; black, 24 button 1 line display, speaker, phone for guest x 2, master, crew, pilothouse, salon, and flybridge
- Panasonic PH universal phone strobe
- Pelco 5 camera system 2 PTZ 3 fixed; 1 outdoor ptz, 1 indoor ptz, 3 fixed, joystick, switch aft deck + er ptz + port + starboard fixed ir, port + starboard rev video
- FLIR M-324, NTSC night vision system
- FLIR deluxe dual station accessory kit
- Xantech 6-way splitter amplifier
- Nauticomp video 2 TO1 splitter amplifier; feed two monitors from one computer
- Nauticomp 24 VDC - 24 VDC converter

## Interior

---

- Berth added to port side stateroom; UPGRADE
- Bookshelves added in forward VIP stateroom; UPGRADE
- Television drop-down on ceiling in forward VIP stateroom; UPGRADE
- Mosaic tumbled marble shower floor in master stateroom; UPGRADE
- Teak framed full height mirror on master stateroom wall; UPGRADE
- Shoji screens in master stateroom; UPGRADE
- Entertainment center / bureau in master stateroom; UPGRADE
- Granite floor in master head; UPGRADE
- Burl insert for post between 4 salon windows; UPGRADE
- Overhead decorative wood panel with recessed lights in main salon installed like Ward Young; UPGRADE
- Salon coffee table adjusted to become removable with a gas lifting system; UPGRADE
- Entertainment center, freestanding coffee table and end table in salon
- Light valance in salon and staterooms
- L-shaped settee in salon with 5" foam seats
- Crew quarters with stairs leading from the salon; UPGRADE
- Safe installed in master stateroom; UPGRADE
- Granite floor in day head; UPGRADE
- Cedar lined hanging lockers; UPGRADE
- Drawers finished with Formica and include full extension guides
- Grohe faucets in heads
- Grohe Relaxa Plus chrome pulsator hand shower with 24" shower bar, base, and soap dish
- Hanging lockers with automatic lighting
- Headliner - removable foam-backed vinyl

- Gloss varnish on 4 tabletops and trim pieces; UPGRADE
- Nutone central vacuum system with 2 additional outlets; UPGRADE
- Cantalupi chrome reading lights in master, VIP, guest and crew staterooms
- Satin varnish on interior teak
- Cantalupi Luisella shower lighting
- Off-white shower wall panel, FRP
- Teak with holly border floors throughout (in addition to head, galley and pilothouse floors); UPGRADE
- Bolon flooring in galley and pilothouse; UPGRADE
- Teak and holly cabin sole at galley, pilothouse and heads
- Teak cabin doors and cabinet doors
- Teak framed mirrors
- Teak veneer panel/vinyl coverings on bulkhead
- Phantom screens installed at pilothouse and aft doors; UPGRADE

## Fly Bridge

---

- (2) 20 lb BBQ tanks with regulator hoses and solenoid control panels; UPGRADE
- Cabinets for wash basin, icemaker and BBQ grill behind seats
- Granite or Corian table; UPGRADE
- 45 Degree sliders for 2 flybridge tables; UPGRADE
- 2200 lbs Davit - Sea Star full function with wireless handheld remote; UPGRADE
- Davit - Sea Star aluminum painted 4-way hydraulic control with rotating base, luff, lift, pendant switch and retract arm with stainless steel standpipe; UPGRADE
- Exclusive Deluxbridge, full beam width all the way forward above the pilothouse
- FRP hard top over flybridge
- Instrument console molded FRP
- Radar arch FRP
- (2) Halogen working lights with FRP cover on radar arch; UPGRADE
- Railing modified to fit 2 life rafts on flybridge; UPGRADE
- Removable stainless steel ladder from boat deck to hardtop; UPGRADE
- Stainless steel safety rails on flybridge/boat deck
- Sliding hatch and stairs down to pilothouse
- Stainless steel Destroyer steering wheel
- 500NX Slimline STIDD helm seat; low back with naugahyde seat and deluxe chrome base; UPGRADE
- Additional 500NX Slimline STIDD helm seat; low back with naugahyde seat and deluxe chrome base; UPGRADE
- Sunbrella furniture fabric for flybridge cushion
- Venturi windscreen with stainless steel grab rails
- A/C air handlers on flybridge with upgraded compressor units in engine room; UPGRADE
- Additional 110V outlet aft to charge tender battery

---

## Construction

---

- Hand-laid FRP hull with PBC core sandwich construction above water line and vinylester barrier lamination for osmosis protection
- Hand-laid FRP deck/house and flybridge with PVC rigid foam sandwich construction
- Full-length longitudinal engine stringers and athwart ship stringers
- Extended swim platform
- Windows with 3/8" tempered glass in salon, 1/2" tempered in pilothouse
- Rub rails with stainless steel capping
- Bilge area smooth finish and coated with bright white epoxy paint
- Built-in swim platform with stainless steel swim ladder and rails
- Quiet Roll integrated spray rail system
- SeaKits Marine Maintenance System

---

## Exterior

---

- Stainless steel breast plate on bow; UPGRADE
- Increase to 15" bollards (2 on foredeck and 2 on swim platform); UPGRADE
- Aft deck bench seat with storage beneath, FRP
- SS fender racks that will accommodate a total of 6 fenders. UPGRADE
- Aft deck fixed teak table with sliders; UPGRADE
- Ultra105 lb polished stainless steel plow anchor; UPGRADE
- 132 lb Ultra stainless steel anchor with swivel; UPGRADE
- Anchor snubber line; UPGRADE
- (4) Maxwell chain counters for dual windlasses at dual stations
- Maxwell - HSC3500C dual capstan/chain wheel horizontal windlass with dual anchor rollers, 300' of 3/8 ht chain, stainless swivels and second chain locker; UPGRADE
- Stamoid covers for BBQ, windlass, Portuguese seating, flybridge and aft deck seating; Webblon covers for wheelhouse windows; UPGRADE
- Exalto wipers control panel - electronic control panel; UPGRADE
- Life ring recess into hull of starboard side pilothouse; UPGRADE
- Passerelle - AIRTEX gangway with sensor, powder coated ice white with handrails on starboard side; UPGRADE
- Windlass remote control added on foredeck
- Single stainless steel anchor chute/roller at bow
- Bottom: in 2014 - 2 coats of black antifouling paint over 5 coats of epoxy primer
- Deck: white gelcoat with beige non-skid deck on complete boat without teak; UPGRADE
- Exterior lighting, Cantalupi model # Luisello 155/20 stainless steel
- Gate doors at fore, side and aft deck, FRP
- Stainless handrail on top of bulwalk on port side, starboard side and Portuguese
- Stainless steel hatch framed plexi-glass on fore deck
- Flush FRP over chain locker
- (8) Stainless steel upsized deck cleats; UPGRADE

- Hull and deck house side white color gelcoat
- Watertight Dutch Doors on both sides of pilothouse and transom
- Portlights - stainless framed tempered glass with screens
- US Coast Guard safety package
- Carlisle & Finch 12" 230v incandescent halogen chrome searchlight; UPGRADE
- Stairs from aft deck to boat deck built in FRP with hatch and stainless rails and treads inlaid with coin dot rubber; UPGRADE
- Stainless steel railing on main deck 36"
- Gas built-in BBQ; UPGRADE
- Built-in stairway to port and starboard side from aft to swim platform
- Sunbrella furniture fabric for aft deck and Portuguese seats
- Hide away swim ladder in recessed box on swim platform; UPGRADE
- Swim platform extended by 12"; UPGRADE
- Rails on swim platform increased to 2" diameter; UPGRADE
- U-rails - 1 1/2" removable stainless steel on swim platform
- Teak on aft deck; UPGRADE
- Teak on extended swim platform; UPGRADE
- Wet bar cabinet on aft deck and flybridge with refrigerator, ice maker; UPGRADE
- Wing doors for aft deck; port and starboard; UPGRADE
- Inlaid rubber (coin dot flooring from the engine room) on the aft deck FRP stairs to the flybridge; UPGRADE
- Marquipt 7 step 19" wide tide rise stair with teak treads on steps, 1 teak handrail, 4 attachment points (1 at each gate), stainless steel strike plates where attachment points are to protect hull, side storage kit to store on bulwarks; UPGRADE

## Engines & Mechanical

- Twin Caterpillar C-12 diesel engines (Platinum Cat Warranty till February, 2017 unlimited hours) with ZF transmissions and electronic instruments for dual stations; UPGRADE
- Monitoring panel for engines, generators and house batteries; UPGRADE
- (2) 20kw Northern Lights generators with sound shields; UPGRADE
- Glendinning handheld remote engine control; UPGRADE
- ABT 12" - 38 hp hydraulic bow and stern thrusters and hydraulic windlass; UPGRADE
- Stabilizers - Trac 250 with 9X sq. ft. fins with X-cord; UPGRADE
- Thrusters - proportional controls (2 stations); UPGRADE
- Spare parts that are unique to Jambo
- Additional A/C unit in engine room; UPGRADE
- Electric heat strips for chilled water A/C; UPGRADE
- Back-up raw water cooling pump for A/C; UPGRADE
- Bilge blower installed forward under accommodation space; UPGRADE
- Gauge on engine - added start/stop and oil pressure; UPGRADE
- SHARK line cutters added to both shafts; UPGRADE
- Oil change system - includes engines, transmissions and generators; UPGRADE

- PTO added to both engines for independent running capability; UPGRADE
- Stainless steel removable work benches installed over both engines; UPGRADE
- VDO rudder indicators - single station; UPGRADE
- Acoustically insulated, lined with sound absorbing material
- Edura coin dot flooring
- Fireboy fire suppression system including both intake and outlet air shutdown system with aluminum louvers
- Fresh water hose bibb
- 115V AC fluorescent and 24v DC
- Outlets - 115v AC GF with waterproof cover
- Sea chests
- Stainless steel safety rails in engine room
- (2) Watertight bulkheads
- Watertight aluminum engine room doors with sight windows
- A/C 2300v - 93,000 BTU chilled water air conditioning system; UPGRADE
- Fuel polishing system with 350 gallons capacity per day with transfer; UPGRADE
- Ball-valve bronze seacocks on all through-hulls below waterline
- Evolution anti-vibration system with soft engine mounts
- Fiberglass drip pans under engines
- Groco 24v fuel transfer pump
- Glendinning engine controls for dual stations
- Teleflex hydraulic steering system for dual stations
- Exhaust - Northern Lights uplift water system
- Dual Maxwell VWC-3500c (24v) vertical windlass with foot switches on fore deck and remote controls for dual stations; UPGRADE
- Additional ground tackle; Ultra anchors (2) 300' @ 1/2" and 350' @5/8"; UPGRADE
- Oil change pump for engines and generators
- (2) Racor 75/1000 max dual fuel filters for main engines
- (2) Racor 75/1000 max single fuel filters for generators
- Second spare dripless shaft bearings on shafts; UPGRADE
- (2) Stainless steel Aquamet prop shafts and (2) Nibral propellers
- Stainless steel rudders and struts with bearings
- Custom Outer Reef steering wheel at pilothouse helm
- Tides packless shaft seals with one spare seal for each shaft
- Underwater exhaust system with bypass and FRP mufflers

## Plumbing & Tankage

- 12/24v Quantum Bilge Buster; odor and mildew controller; UPGRADE
- WEMA multi-tank level gauge installed with five 316 SS senders (3 for fuel, 1 water, and 1 waste); UPGRADE
- Fuel tank increased capacity to 2,350 gallons; UPGRADE
- Holding tank increased capacity to 200 gallons with macerator pump and backup

macerator pump; UPGRADE

- Wash down system - raw water pump and anchor/chain washing system; UPGRADE
- Wash down outlets - fresh water on fore deck, aft deck and flybridge
- Wash down salt water pump with outlet on foredeck
- Built-in custom designed storage for fluids such as oil etc; UPGRADE
- 1800 gallon per day (75 per hour) water maker; UPGRADE
- Head Hunter X Caliber back-up water pump added for fresh water; UPGRADE
- Bilge high water GOST alarm system with warning panel at pilot house; UPGRADE
- Bilge pump is over sized in engine room; UPGRADE
- Bilge pumps - (4) automatic 24v DC and emergency bilge suction on engine
- Cleanout and sight gauge for tanks
- Grohe faucets - single level mixing taps for sink at galley, head, and shower
- Fresh water faucet in engine room
- Fresh water pump, Headhunter model XR-124 with accumulator tank, 24v DC
- Fuel manifold system SS (supply and return)
- Rigid fresh water pipes and color card copper fuel lines
- Share water inlet on transom
- (2) Shower sump pumps automatic 24v DC
- Tank gauge for fuel and water tanks
- (3) Aluminum fuel tanks, total capacity 2350 gallons; includes 650 gallons of fuel capacity; UPGRADE
- Stainless steel water tank capacity 400 gallons
- Toilets - (4) Tecma electric marine with y-valves and sanitary hose for all discharge plumbing; Bone color
- Transom shower in recessed box with hot and cold supply
- Water heater with heat exchanger - 115v AC - 20 gallons; plus additional 20 gallon water heater; UPGRADE
- Platform built and pre-wired for power for future STAR hydraulic pump; UPGRADE

---

## Tender

- 2012 15' AB tender with Yamaha 70hp 4-stroke
- Tender harness and chocks
- VHF and Garmin chart plotter and depth finder
- Auto bilge pump
- Storage under seating and helm

---

## Captain Quarters

- Crew area with stainless steel workbench and wood cabinets in storage room behind crew stateroom; UPGRADE
- Teak with holly border in the crew quarters sleeping area; UPGRADE

---

## Exclusions

---

Owner's personal belongings.

---

## Disclaimer

---

The Company offers the details of this vessel or yacht in good faith but cannot guarantee or warrant the accuracy of this information nor warrant the condition of the vessel. A buyer should instruct his representatives, agents, or his surveyors, to investigate such details as the buyer desires validated. This vessel or yacht is offered subject to prior sale, price change, or withdrawal without notice.



# PHOTOS

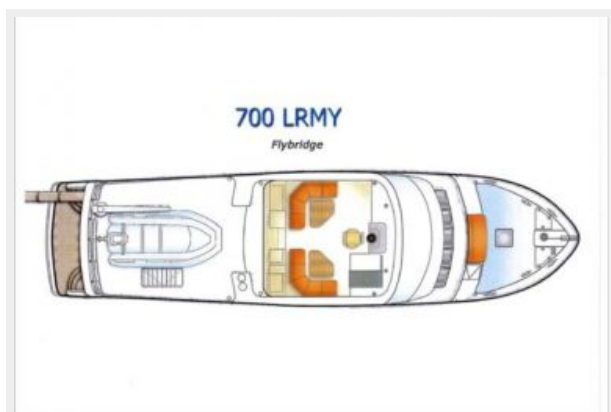
## Main Deck Layout



## Accommodations Layout



## Flybridge Layout



## Salon



## Salon



## Galley



**Galley**



**Galley**



**Galley**



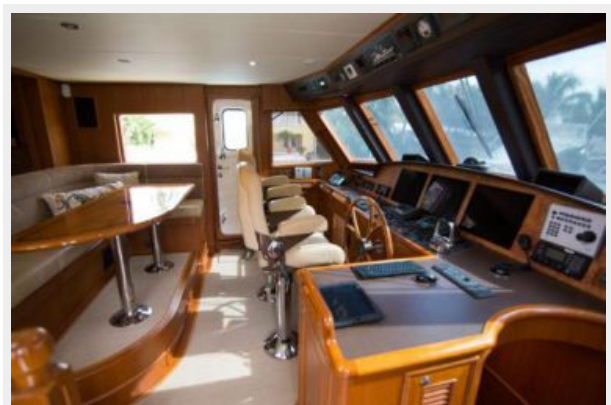
**Pilothouse**



**Pilothouse Helm**



**Pilothouse**





**Pilothouse Aft to Salon**



**Day Head**



**Master SR**



**Master SR**



**Master SR**



**VIP Stateroom**



**VIP Head**



**Guest Stateroom**



**Guest Stateroom**



**Guest Head**



**Companionway**



**Master SR**



**Master SR**



**MSR Closet**



**Laudry**



**Access to Engine Room from MSR**





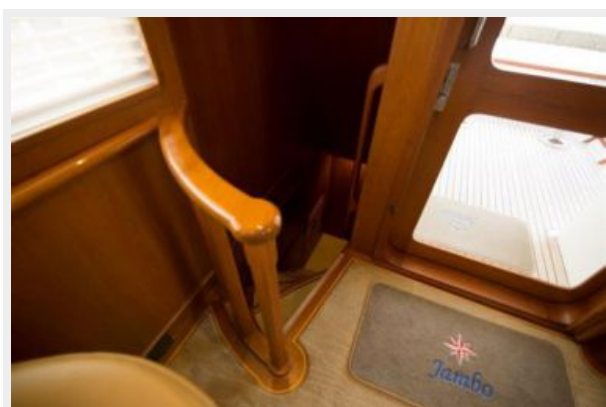
**Master Head**



**Laundry Crew**



**Stairs to Crew and Engine Room**



**Flybridge helm seating**



**Flybridge Helm**



**Flybridge**



**Flybridge**



**Flybridge**



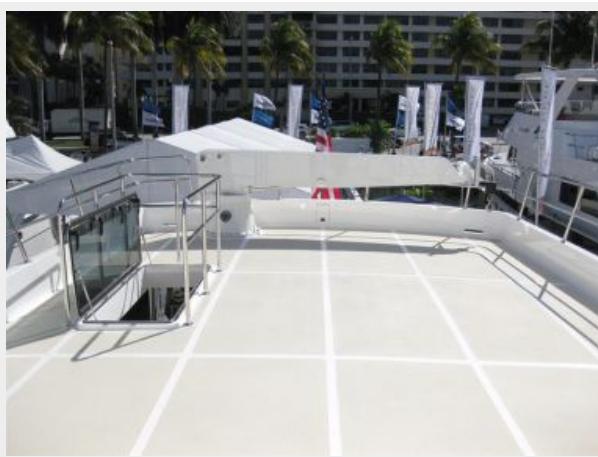
**Fore Deck**



**Boat Deck**



**Davit Boat Deck**



**Portuguese Bow**



**Dual upgrated Anchors**



**Side Deck w/Wing doors**



**Stairs to Flybridge**



**Aft Deck**





**Aft Deck**



**Aft Deck**



**Aft Deck**



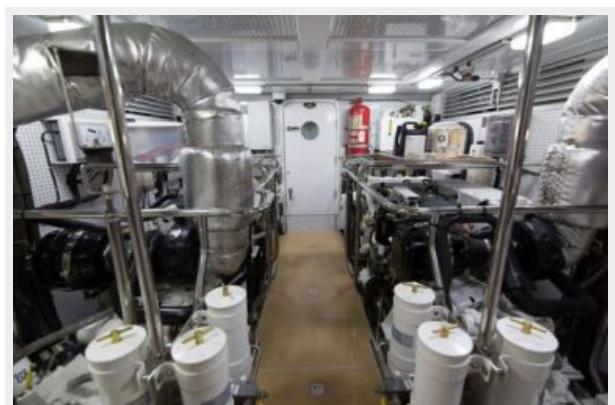
**Aft Deck**



**Engine Room**



**Engine Room**



**Engine Room**



**SS Hose reel**



**Transom w/Crew access**



**Transom**



# CONTACTS

---

Andrey Shestakov, leading yacht broker of the sales department of Shestakov Yacht Sales Inc. Shestakov Yacht Sales Inc., the official representative of the Miami/Fort Lauderdale FL headquarters.

## Contact details

---

Email: **andrey@shestakovyachtsales.com**

Web: [shestakovyachtsales.com/en/](http://shestakovyachtsales.com/en/)

## Telephones

---

USA: **+1(954)274-4435**

## Office hours

---

Monday – Saturday: **9:00 - 21:00 EDT**

Sunday: **closed**

## Address

---



Harbour Towne Marina, 850 NE 3rd St,  
STE 213, Dania, FL 33004