

MIRACLES HAPPEN — VIKING



Судостроитель: [VIKING](#)

Год постройки: 2010

Модель: Крейсер

Цена: **ЦЕНА ЯХТЫ ПО ЗАПРОСУ**

Местонахождение: United States

Длина общая: 52' 0" (15.85m)

Ширина: 17' 3" (5.26m)

Мин. осадка: 5' 2" (1.57m)

Крейс. скорость: 33 Kts. (38 MPH)

Макс. скорость: 38 Kts. (44 MPH)

Купить **Miracles Happen — VIKING** а также выбрать подходящую вам яхту из нашего каталога яхт вам поможет опытный яхтенный брокер Андрей Шестаков. На сегодняшний день компания **Shestakov Yacht Sales Inc.** имеет большое количество яхт в **собственном списке продаж**, а также тесно сотрудничает со всеми крупными яхтенными производителями по всему миру.

Для того чтобы купить яхту **Miracles Happen — VIKING** а также проконсультироваться по любому вопросу связанному с покупкой, продажей, чартером яхт позвоните по телефону **+7(918)465-66-44**.

ОГЛАВЛЕНИЕ

ОГЛАВЛЕНИЕ	2
ХАРАКТЕРИСТИКИ	5
Обзор	5
Основная информация	5
Размеры	5
Скорость, вместимость и масса	5
Размещение	5
Корпус и палуба	6
Информация о двигателе	6
ПОДРОБНОЕ ОПИСАНИЕ	7
Accommodations	7
Salon	7
Galley	8
Companionway	8
Master Stateroom	8
Master Head	8
Guest Stateroom	8
Guest Head	9
Helm	9
Electronics	9
Cockpit	10
Mechanical	11
Исключения	11
Отказ от ответственности	11
ФОТОГРАФИИ	13
Salon	13
Galley	13
Master Stateroom	13

Helm	13
Salon	13
Salon	13
Salon/Helm	14
Helm	14
Helm	14
Helm Chair	15
Companion Seating	16
Galley	17
Galley	17
Galley	17
Galley	17
Galley	17
Galley	17
Galley	17
Master Stateroom	18
Master Stateroom	18
Master Head	18
Master Head	18
Master Head	19
Guest Stateroom	19
Guest Stateroom	19
Guest Stateroom	19
Guest Head	20
Guest Head	20
Guest Head	20
Guest Head	20
Mezzanine	21
Cockpit	21
Cockpit	21

Livewell / Tackle Center	21
Engine Room	21
Engine Room	22
Engine Room	22
Engine Room	22
Engine Room	22
Engine Room	23
Starboard Profile	23
Starboard Profile	23
Port Profile	23
Port Profile	23
Aft View	24
Aft View	24
КОНТАКТЫ	25
Контактная информация	25
Телефоны	25
Время работы	25
Адрес	25

ХАРАКТЕРИСТИКИ

Обзор

“Miracles Happen” is a custom 2010 Viking 52 Sport Yacht. She offers “the best of both worlds” being an excellent and extremely capable bluewater fishing machine while offering luxurious amenities as a coastal cruising yacht. She is powered by twin MAN, 12 cylinder, 1,360HP common rail diesels with extremely low hours. Two Stidd helm chairs offer great visibility and comfort while sitting at the helm behind an impressive array of electronics. Below is the expansive galley with sub-zero under-counter refrigeration, cook top, and a microwave/convection oven. Moving forward two staterooms both with en suite heads offer pure luxury. Don't miss the opportunity to own this truly unique custom Viking.

Основная информация

Тип судна: Крейсер

Модельный год: 2010

Год постройки: 2010

Страна: United States

Размеры

Длина общая: 52' 0" (15.85m)

Ширина: 17' 3" (5.26m)

Мин. осадка: 5' 2" (1.57m)

Скорость, вместимость и масса

Крейс. скорость: 33 Kts. (38 MPH)

Макс. скорость: 38 Kts. (44 MPH)

Водоизмещение: 62000 Pounds

Вместимость воды: 200 Gallons

Вместимость сточного бака: 50 Gallons

Объем топливного бака: 1400 Gallons

Размещение

Всего кают: 2

Всего ком. состава: 2

Корпус и палуба

Материал корпуса: Fiberglass

Информация о двигателе

Производитель: MAN

Модель: V12 CRM

Тип двигателя: Inboard

Тип топлива: Diesel

ПОДРОБНОЕ ОПИСАНИЕ

Accommodations

Entering the salon, you are greeted with a bright open floor plan featuring a generous L-shaped seating area with a teak coffee table and 26" LCD TV with Bose Surround Sound. The helm features STIDD helm and companion chairs, which offer a commanding view for easy maneuvering.

Down below, the galley runs an extensive portion of the starboard side offering ample storage, Sub Zero refrigerator and freezer drawers and Corian countertops. With matte wood finish, unique tile floors and clear plastic floor coverings, this boat is easy to maintain and keep clean. The master stateroom is forward and offers a separate head for privacy. The guest stateroom, private entrance to the day head, along with a full-size washer and dryer are off of the companionway.

Salon

- Premier edition decor
- Cabinet w/refrigerator ice maker & cabinet storage
- 18"x 18" hatch over helm chair
- Fixed hi-lo table
- Custom teak valances including aft valance
- Custom headliner
- Black console
- Viking home theater upgrade
- Teak trim where edges of amtico floor meet carpet
- Custom amtico flooring at salon entrance
- Teak cocktail table
- Teak helm dash panels
- Teak wall panel interior, headliner wrapped panels; teak valances, teak wire boxes, teak aft bulkhead
- Custom amtico flooring at entranceway autumn slate-12" x 12" with teak trim
- Storage cabinet fwd of companion chair
- Salon door type catches
- Sofa, upgraded style L-shaped, in ultraleather light oyster and storage below
- Wrapped hatch carpet installation
- Custom wallpaper
- Custom headliner material/baby ostrich
- Brushed nickel interior hardware
- Brushed nickel coverplates for switches & receptacles
- Satin nickel interior light trim

- Helm chair in ultraleather light oyster

Galley

- Undercounter sub-zero refrigerator and freezer with drawers
- Corian countertop w/ burlled beach color and brushed nickel sink
- Custom amtico flooring in galley autumn slate 12" x 12"
- 110 volt outlet next to switch on backsplash above sink
- Four burner recessed stove
- Built-in convection oven

Companionway

- Full-size washer and dryer
- Separate access to day head

Master Stateroom

Master Stateroom with Queen Island berth forward:

- Custom wallpaper installation
- 20" flat screen television

Master Head

- Ensuite
- Corian vanity countertop with bone sink in burlled beach
- Brushed aluminum shower door
- Shower fixtures in satin nickel
- Towel bars and rings in brushed nickel
- Faucet in satin nickel

Guest Stateroom

- Twin side-by-side bunks
- Custom wallpaper installation
- 20" flat panel television
- Orthopedic mattresses
- Dimmer on overhead low-voltage ac lights
- Locker storage top in teak

Guest Head

Private Access to head and shower:

- Mirror wallpaper around upper vanity insert
- Teak face on lower vanity
- Custom Amtico flooring
- Corian vanity countertop with bone sink burlwood beach
- Chrome shower door
- Satin nickel shower fixtures
- Brushed nickel towel bars & rings
- Faucet in satin nickel

Helm

- Enclosed air conditioned Flybridge
- Stidd helm and companion chairs

Electronics

- Electronic trolling valves
- Moritz monitor
- Rexroth engine controls

NAVNET 3D Multi Function System

- (1) Furuno MFDBB black box 3D processor
- *Pre-loaded Mapmedia Cartography for Continental US*
 - *Dual view processor for independent operation on two monitors*
 - (2) Furuno GP320 GPS/WAAS antennae
 - (2) Shakes 4365 GPS mount
 - (2) VEI DM 17 SUN 17" Sunlight monitor

NAVNET 3D UHD Radar System Module

- (1) Furuno DRS12A NAVNET 3D 12KW 72N.M. gearbox
- (1) Furuno XN13A/6 6' Open Array

NAVNET 3D Digital Fishfinder System Module w/ Broadband Transducer

- (1) Furuno DFF1 NAVNET 1KW sounder module
- (1) Furuno 526TID-HDD 1KW 50/200 kHz broadband transducer
- (1) Furuno HUB101 Furuno ethernet switch

Shallow Water Depth & High Precision Water Temperature

- Furuno RD-30 digital depth display
- Furuno 235DHT-LMSE 235KHZ depth transducer

Auto Pilot System

- (1) SIMRAD AP2403 auto pilot system
- (1) SIMRAD AP 24 secondary autopilot control
- (1) SIMRAD 558844 10M Simnet cable

VHF Communications

- (1) ICOM 604 VHF black
- (2) Shakes 5225-XT 8' Galaxy VHF antennae
- 1 Speco SA-12RP hailer horn mounted on hard top

(2) Sea Vision 24V 50W XEON Underwater lights

Audio Upgrades

- (1) Sirius SR-H2000 satellite radio tuner
- (1) Fusion MSWR100/C full function fusion remote
- (1) Fusion MSEXT20 20M extension cable
- (1) JL audio M770CCSCGWH component speaker system
- (1) JL audio M2250 two channel amplifier 125w x 2 @ 2ohm
- (1) Nevo Q50 touch screen color RF remote

Cockpit

- Mezzanine seating
- Transom swim steps
- Y-valve for fresh and salt water washdowns in cockpit
- Freezer storage in mezzanine seat
- Transom coaming with gate
- Venezuelan sun shade
- Custom fishing station with livewell, sink, cutting board, tackle storage and rod holders - removable
- Glendenning Cablemaster

Mechanical

- Twin MAN V12-CRM 1360HP
- Additional fuel tank forward for a total of three tanks
- Remote spotlight
- Bow pulpit
- Deck/ext: Lewmar v4 ss windlass (gypsy and drum)
- Dc bow thruster
- Hull color: snow white
- Bottom paint black
- Boot stripe Viking std black
- Generator gas-water separator
- Awlgrip brass thru-hulls & sea strainers in engine room & fwd bilges
- Dual Racor primary fuel filters
- Fuel filters in snow white
- Line run from oil change system
- Dual power steering pumps
- 110v outlet on aft bulkhead at entranceway of engine room
- Engine room: all pumps painted except fresh
- Water pump snow white
- Oval exhaust outlets (linear exhaust)
- Fiberglass side thru-hulls
- Water manifold fills water tank from cockpit
- Overboard discharge for all heads
- Awlgrip forward bilge and anchor locker
- Awlgrip anchor locker
- Bilge lights
- Powder coated air horns
- Horns mounted on side of mast
- Recessed trim tab covers
- Stainless steel gas springs for anchor locker hatch

Исключения

При продаже яхты исключаются личные вещи владельца.

Отказ от ответственности

Компания предоставляет описание судна или яхты добросовестно, но не может гарантировать точность этой информации, а также не ручается за техническое состояние. Покупатель должен проинструктировать своих агентов или оценщиков исследовать представленную информацию более подробно, по собственному желанию.

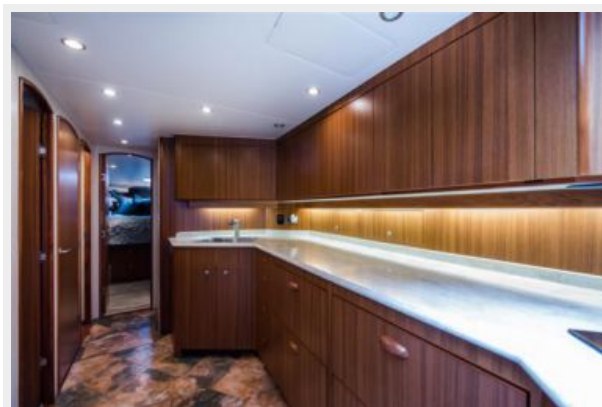
Продажа судна или яхты, изменение цены или снятие с продажи будет происходить без предварительного уведомления.

ФОТОГРАФИИ

Salon



Galley



Master Stateroom



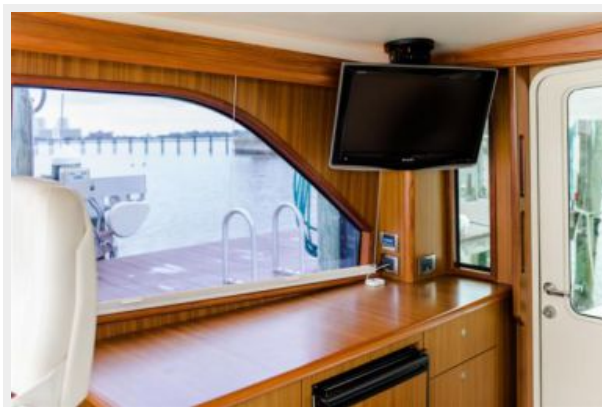
Helm



Salon



Salon



Salon/Helm



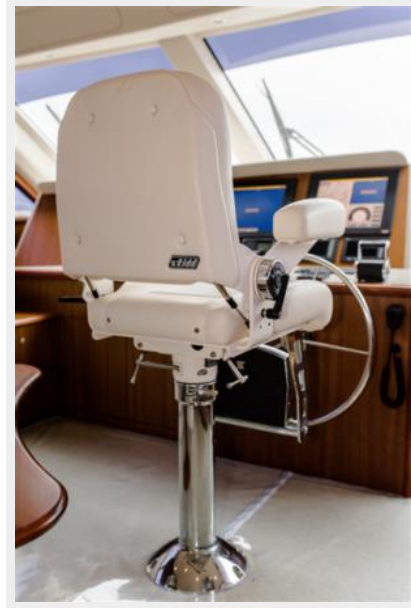
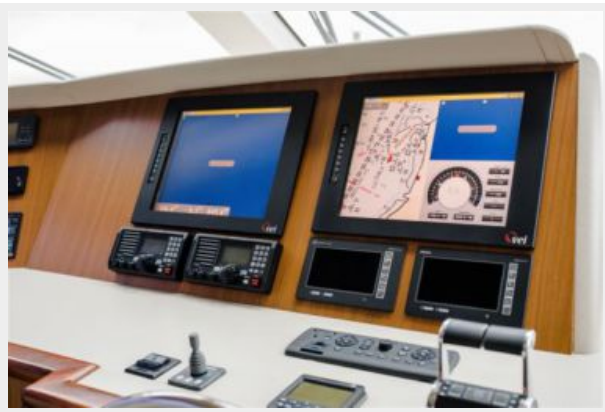
Helm



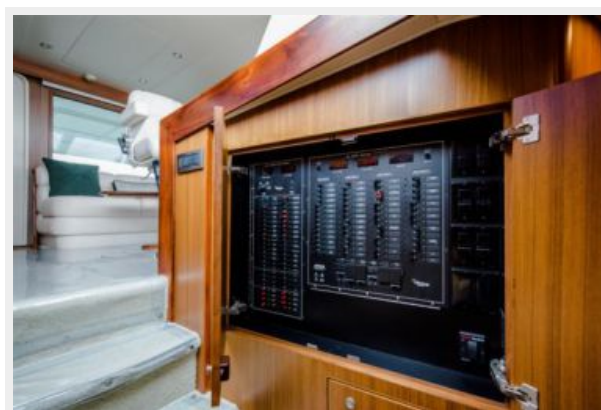
Helm



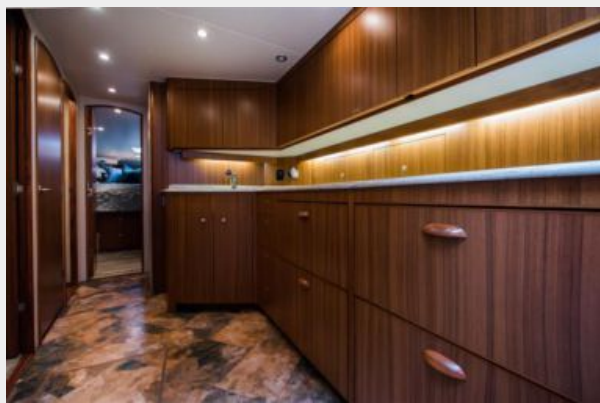
Helm Chair



Companion Seating



Galley



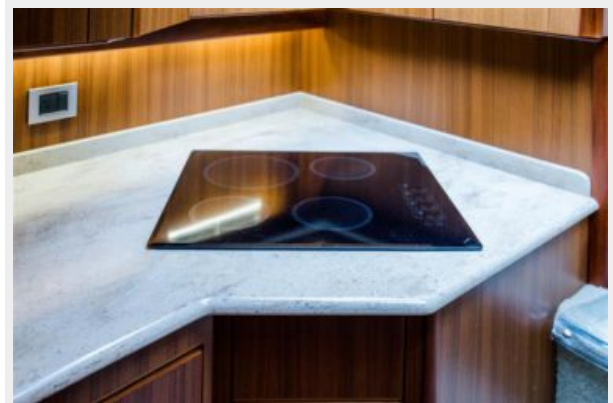
Galley



Galley



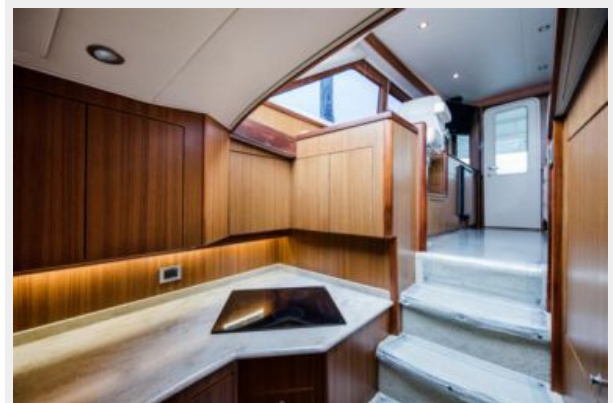
Galley



Galley



Galley



Master Stateroom



Master Stateroom



Master Head



Master Head



Master Head



Guest Stateroom



Guest Stateroom



Guest Stateroom



Guest Head



Guest Head



Guest Head



Guest Head



Mezzanine



Cockpit



Cockpit



Livewell / Tackle Center



Engine Room



Engine Room



Engine Room



Engine Room



Engine Room



Engine Room



Starboard Profile



Starboard Profile



Port Profile



Port Profile



Aft View



Aft View



КОНТАКТЫ

Андрей Шестаков (Andrey Shestakov) – ведущий яхтенный брокер отдела продаж яхт и судов компании Shestakov Yacht Sales Inc. Официальный представитель Shestakov Yacht Sales Inc. для русскоговорящих клиентов в центральном офисе компании в Майами/Форт Лодердейл/Флорида/США.

Контактная информация

Email: andrey@shestakovyachtsales.com

Web: shestakovyachtsales.com

Телефоны

Краснодарский край: **+7(918)465-66-44**

США, Майами, Флорида: **+1(954)274-4435**

Время работы

Понедельник – Суббота: **9:00 - 21:00**
EDT

Воскресенье: **Закрето**

Адрес



Harbour Towne Marina, 850 NE 3rd St,
STE 213, Dania, FL 33004