

STORMY MONDAY — SLOCUM



Builder: SLOCUM

Year Built: 1986

Model: Cutter

Price: PRICE ON APPLICATION

Location: United States

LOA: 43' 0" (13.11m)

Beam: 12' 10" (3.91m)

Min Draft: 6' 4" (1.93m)

Our experienced yacht broker, Andrey Shestakov, will help you choose and buy a yacht that best suits your needs **Stormy Monday — SLOCUM** from our catalogue. Presently, at Shestakov Yacht Sales Inc., we have a wide variety of yachts available on our sale's list. We also work in close contact with all the big yacht manufacturers from all over the world.

If you would like to buy a yacht **Stormy Monday — SLOCUM** or would like help answering any questions concerning purchasing, selling or chartering a yacht, please call **+1(954)274-4435**

TABLE OF CONTENTS

TABLE OF CONTENTS	2
SPECIFICATIONS	3
Overview	3
Basic Information	6
Dimensions	6
Speed, Capacities and Weight	6
Accommodations	6
Hull and Deck Information	6
Engine Information	7
PHOTOS	8
CONTACTS	17
Contact details	17
Telephones	17
Office hours	17
Address	17

SPECIFICATIONS

Overview

Stormy Monday is a USCG Documented aft cockpit blue water cutter rigged cruiser. Designed by Stan Huntingford and built by Formosa Boat Building in Taiwan she shares the hull and interior layout with the mid-80's Passport 42. Stormy Monday has a modified cruising keel (encapsulated) with a skeg hung rudder and is surprising fast with a nice motion when sailed hard.

An amazing amount of recent upgrades include: New bimini, dodger, full enclosure, cockpit cushions (2013) Furuno chart plotter, wind, depth, radar, sirius weather (2013) Ham/SSB Icom IC-7200 and Pactor P4 modem (2013) Standard Horizon VHF w/AIS receiver integrated to plotter (2013) Balmar 80A Alternator (2013) Island Time Wifi Antenea (2013) New Standing Rigging, Full Battened Mainsail and Furling Jib (2011) New Furling Staysil (2014) Mast & Boom Refurbished (2011) New Central Air Conditioning and Heat (2014) New Spectra Watermaker Ventura 200T (2013) 420watts Solar panels (2014) Non-Skid Epoxy Decks (replaced teak decks 2010)

Boat Name Stormy Monday **Specs** Keel: Fin **Engines** Engine 1: Engine Brand: Lehman Year Built: 1986 Engine Model: 4D61 Engine Type: Inboard Engine/Fuel Type: Diesel Engine Hours: 900 Propeller: 3 blade propeller Drive Type: Direct Drive Engine Power: 61 HP

Dimensions

LOA: 42 feet Beam: 12 ft 10 in LWL: 34 ft 10 in Maximum Draft: 6 ft 4 in Displacement: 25,500 lbs Ballast: 9,500 lbs

Engines

Engine Brand: Lehman Year Built: 1986 Engine Model: 4D61 Engine Type: Inboard Engine/Fuel: Diesel Propeller: 3 blade fixed Drive Type: Direct Drive Engine Power: 61 HP Engine Hours: 900 Cruising Speed: 6 knots Maximum Speed: 8.5 knots

Tankage

Fresh Water: 150 gallons Fuel Tanks: 120 gallons Holding: 20 gallons Hot Water: 10 gallons (new in 2014)

Accommodations

Number of double berths: 2 w/custom mattresses Number of single berths: 2 Number of Cabins: 2 Number of Heads: 1

Headroom is 6'4" or more throughout the boat with incredible storage capacity. Beautiful

Burmese teak joinery runs throughout; solid teak staving, all doors are beveled and hand fitted, lockers are teak lined and the glossy varnished cabin sole is teak with holly plank. The interior is finished with a satin varnish and high gloss accents on the trim. The teak doors are louvered

There is room for up to 6 people to sleep – in the forward cabin, main salon, quarter berth and the master cabin.

Forward cabin – large offset double berth to port with a seat located to starboard. Row of lockers and bookshelf. Large overhead ventilation hatch that supplies plenty of light and ventilation. Insect netting for berth.

Quarter berth – this berth is located at the base of the companionway to starboard and is perfect for sleeping underway when sailing shorthanded. In port it makes a great storage place for cockpit seat cushions and similar gear

Master cabin- across from the quarter berth, adjacent to the companionway to port, is the master cabin. It has a spacious double berth with reading lights, storage drawers below the berth, shelves beside the berth, and a full hanging locker. There are large opening ports and an overhead hatch for light and air. Insect netting for berth

Head / WC – a spacious head with a full sized stall shower with a tub enclosure as its base. There is pressure hot and cold water for both sink and shower. There is a teak vanity and a ventilated storage locker for all your necessities plus 2 opening ports for ventilation.

Main Salon – The main salon consists of a settee to starboard and a spacious squared shaped dinette to port. Hullside bookshelves are flanked by 2 storage lockers. There is generous storage under both seating areas and behind the settee.

Dinette – The beautiful dinette table has a storage locker built into the center. More bookshelves and lockers line the hullside with even more under seat storage

Navigation station – a classically styled spacious navigation station consisting of a chart table with seat, storage within desk and the ship's electrical system with the AC and DC control panels and gauges. The electrical panel is hinged and opens for access to breakers and buss bars. Further storage under the navigator's seat. Aft of the chart table is a hanging wet locker.

Electronics & Navigation

Wind speed and direction – Furuno (new 2014) Knot & Depth meter – Furuno (new 2014) Autopilot – Navman Compass – Ritchie Chart Plotter – Furuno Navnet 3d (new 2013) integrated to nav station to work with MaxSea software & compass heading sensor Radar – Furuno integrated to Chart Plotter (new 2013) Integrated Sirius Weather Radar (new 2013) GPS Ham/SSB radio ICOM IC-7200 & Pactor P4 modem (new 2013) AM/FM Radio/CD player (new 2012) TV set VHF with AIS receiver – Standard Horizon (new 2013) Alternator (Balmar) – 80A (new 2013) Island Time Wifi Antenna (bullet) (new 2013) Xantrex LinkLITE Battery Monitor & Xantrex Battery Status & Inverter (new 2013)

Sails & Rigging

New standing rigging (new 2011) Full battened mainsail and furling Jib (new 2011) Mast & Boom (refurbed 2011) Furling staysail (new 2014) Self-tailing winch on mast (new 2011) Winches – Barlow, (rebuilt 2011)

Interior Equipment

Marine head – Lavac Central Air conditioning & Heat (new 2014) Oven – 3 burner Fresh water maker – Spectra Ventura 200T (new 2013) Refrigerator & freezer – Adler Barbour Cold Machine Icebox rebuilt 2010 using vacuum panel insulation with a spillover freezer Electric bilge pump Battery charger – Freedom 20 charger inverter Hot water heater (10 gallons) (new 2014)

Electrical Equipment

Shore power inlet Inverter – Freedom 20 Charger inverter Electrical Circuit: 12V – numerous 12v sockets Batteries – 6 ea Trojan T105 golf cart batteries

Exterior Equipment / Extras

Marine grill – Kuuma (new 2013) All new Bimini, Dodger and full enclosures for cockpit (new 2013) Cockpit cushions (new 2013) Mainsail cover – stack pack (new 2013) Cockpit cushions (new 2013) Arch on back stern Monitor Wind Vane (Scanmar) Anchor Wash down on foredeck (new 2013) Lifelines (new 2013) Non-skid epoxy decks (replaced Teak decks 2010) Solar panels (420 watts) (new 2014) Refurbished Pedestal and added Instrument Pods (2013) Wind generator – Air X Marine with Silentwind Silent Air blades Cockpit table Teak cockpit Cockpit shower (new 2013) Outboard engine brackets Electric windlass Lifesling Emergency Tiller

Ground Tackle

Delta 55 Fortress 27 Bruce CQR type Anchorman Power 1200 Windlass /Lewmar 200 feet 3/8" chain

Dinghy (not included in sale of boat)

Dinghy 11.5 caribe 15 hp Johnson 2 cycle 3.5 hp Tohatsu 4 c

Basic Information

Category: Cutter

Sub Category: Cutter

Model Year: 1986

Year Built: 1986

Country: United States

Dimensions

LOA: 43' 0" (13.11m)

LWL: 34' 10" (10.62m)

Beam: 12' 10" (3.91m)

Min Draft: 6' 4" (1.93m)

Speed, Capacities and Weight

Displacement: 25500 Pounds

Water Capacity: 150 Gallons

Holding Tank: 20 Gallons

Fuel Capacity: 120 Gallons

Accommodations

Total Cabins: 2

Total Berths: 4

Total Heads: 1

Hull and Deck Information

Hull Material: Fiberglass

Engine Information

Engines: 1

Manufacturer: Lehman

Model: 4D61

Engine Type: Inboard

Fuel Type: Diesel

PHOTOS



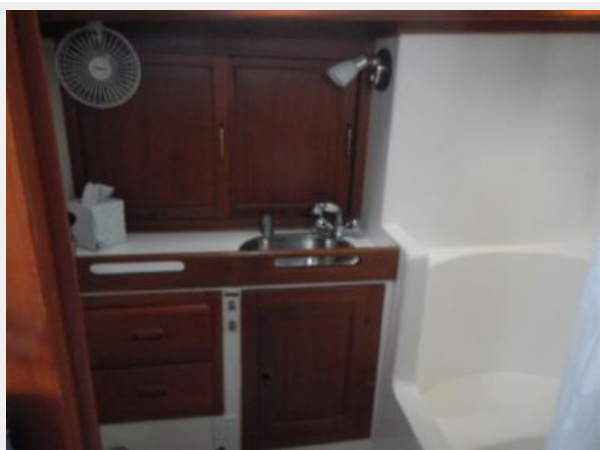
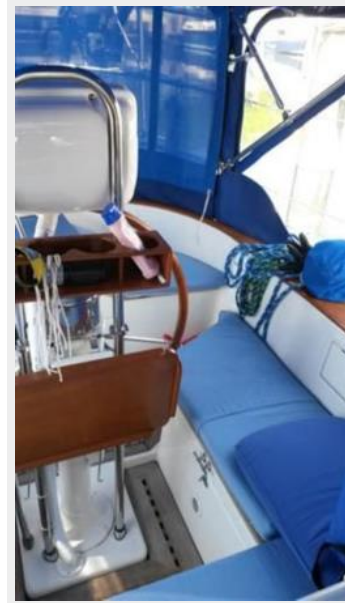
















CONTACTS

Andrey Shestakov, leading yacht broker of the sales department of Shestakov Yacht Sales Inc. Shestakov Yacht Sales Inc., the official representative of the Miami/Fort Lauderdale FL headquarters.

Contact details

Email: andrey@shestakovyachtsales.com

Web: shestakovyachtsales.com/en/

Telephones

USA: +1(954)274-4435

Office hours

Monday – Saturday: **9:00 - 21:00** EDT

Sunday: **closed**

Address



Harbour Towne Marina, 850 NE 3rd St,
STE 213, Dania, FL 33004