

SENSEI — MITSUBISHI



Builder: MITSUBISHI

Year Built: 1991

Model: Motor Yacht

Price: PRICE ON APPLICATION

Location: Italy

LOA: 128' 3" (39.09mm)

Beam: 26.24

Max Draft: 6' 11" (2.1mm)

Cruise Speed: 10 Knots Kts. (12 MPH)

Max Speed: 13 Knots Kts. (15 MPH)

Our experienced yacht broker, Andrey Shestakov, will help you choose and buy a yacht that best suits your needs **SENSEI — MITSUBISHI** from our catalogue. Presently, at Shestakov Yacht Sales Inc., we have a wide variety of yachts available on our sale's list. We also work in close contact with all the big yacht manufacturers from all over the world.

If you would like to buy a yacht **SENSEI — MITSUBISHI** or would like help answering any questions concerning purchasing, selling or chartering a yacht, please call **+1(954)274-4435**

TABLE OF CONTENTS

TABLE OF CONTENTS	2
SPECIFICATIONS	4
Basic Information	4
Dimensions	4
Speed, Capacities and Weight	4
Accommodations	4
Hull and Deck Information	4
Engine Information	5
PHOTOS	6
0L0A0095-2	6
0L0A0099	6
0L0A0157	6
0L0A0170	6
0L0A0240	6
0L0A0292	7
0L0A0295	7
0L0A0324-2	7
0L0A0358	7
IMG-20190729-WA0001	7
IMG-20190729-WA0009	7
IMG-20190730-WA0027	8
IMG-20190730-WA0031	8
20170804_103937	8
CONTACTS	9
Contact details	9
Telephones	9
Office hours	9
Address	9

SPECIFICATIONS

Basic Information

Category: Motor Yacht

Sub Category: Motor Yacht

Model Year: 1991

Year Built: 1991

Country: Italy

Dimensions

LOA: 128' 3" (39.09mm)

Beam: 26.24

Max Draft: 6' 11" (2.1mm)

Speed, Capacities and Weight

Cruise Speed: 10 Knots Kts. (12 MPH)

Max Speed: 13 Knots Kts. (15 MPH)

Water Capacity: 8 Gallons

Fuel Capacity: 7.66 Gal Gallons

Accommodations

Total Cabins: 5

Sleeps: 10

Total Heads: 7

Crew Cabin: 8

Hull and Deck Information

Hull Material: Fiberglass

Exterior Designer: Glade Johnson (1996)

Interior Designer: Ou Baholyodhin (2007)

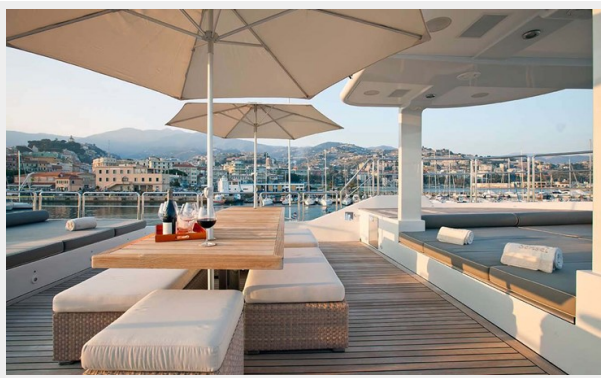
Engine Information

Engines: 2

Manufacturer: MITSUBISHI

PHOTOS

0L0A0095-2



0L0A0099



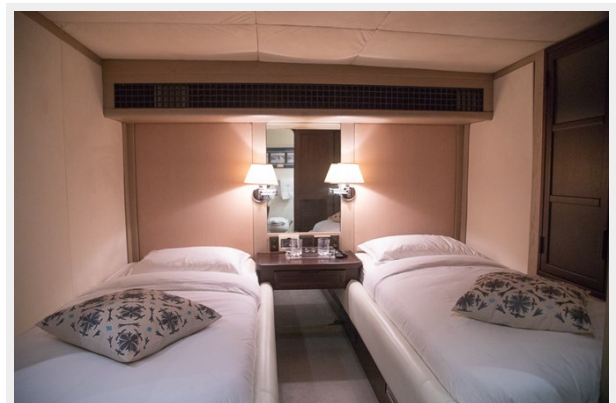
0L0A0157



0L0A0170



0L0A0240



0L0A0292



0L0A0295



0L0A0324-2



0L0A0358



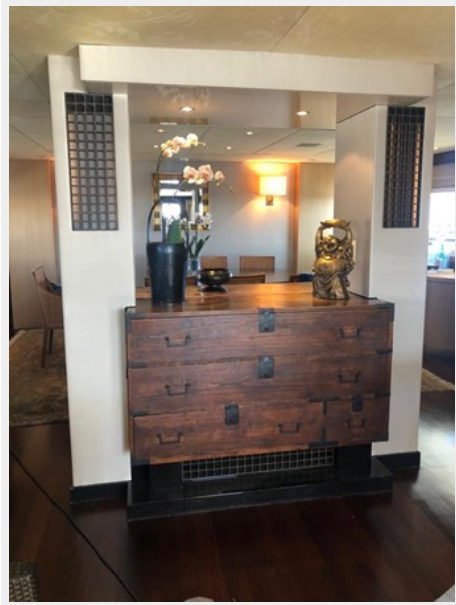
IMG-20190729-WA0001



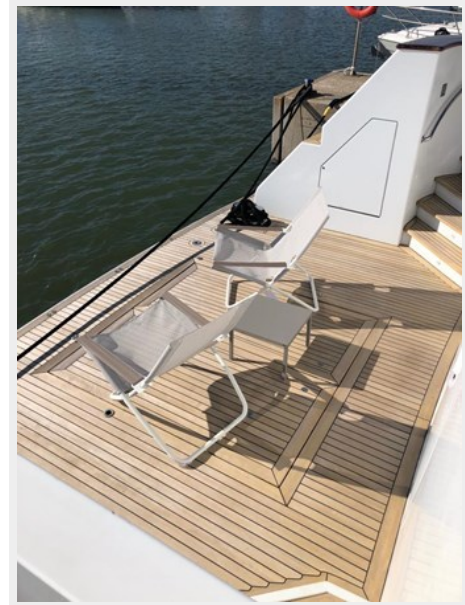
IMG-20190729-WA0009



IMG-20190730-WA0027



IMG-20190730-WA0031



20170804_103937



CONTACTS

Andrey Shestakov, leading yacht broker of the sales department of Shestakov Yacht Sales Inc. Shestakov Yacht Sales Inc., the official representative of the Miami/Fort Lauderdale FL headquarters.

Contact details

Email: andrey@shestakovyachtsales.com

Web: shestakovyachtsales.com/en/

Telephones

USA: +1(954)274-4435

Office hours

Monday – Saturday: **9:00 - 21:00** EDT

Sunday: **closed**

Address



Harbour Towne Marina, 850 NE 3rd St,
STE 213, Dania, FL 33004