

ONE O ONE — TECNOMAR



Builder: TECNOMAR

Year Built: 2008

Model: Motor Yacht

Price: PRICE ON APPLICATION

Location: Italy

LOA: 118' 2" (36.00m)

Beam: 24' 0" (7.30m)

Min Draft: 4' 0" (1.20m)

Cruise Speed: 28 Kts. (32 MPH)

Max Speed: 35 Kts. (40 MPH)

Our experienced yacht broker, Andrey Shestakov, will help you choose and buy a yacht that best suits your needs **ONE O ONE — TECNOMAR** from our catalogue. Presently, at Shestakov Yacht Sales Inc., we have a wide variety of yachts available on our sale's list. We also work in close contact with all the big yacht manufacturers from all over the world.

If you would like to buy a yacht **ONE O ONE — TECNOMAR** or would like help answering any questions concerning purchasing, selling or chartering a yacht, please call **+1(954)274-4435**

TABLE OF CONTENTS

TABLE OF CONTENTS	2
SPECIFICATIONS	3
Overview	3
Basic Information	3
Dimensions	3
Speed, Capacities and Weight	4
Accommodations	4
Hull and Deck Information	4
Engine Information	4
DETAILED INFORMATION	5
Walk Through - Layout	5
Winter Refit & Overview	5
Specifications	6
Exclusions	6
Disclaimer	6
PHOTOS	7
CONTACTS	19
Contact details	19
Telephones	19
Office hours	19
Address	19

SPECIFICATIONS

Overview

Key Features:

- VAT Paid - Italian Flag
- Giorgio Armani Casa Interior Decor
- New Exterior Paint - 2014
- RINA 5 Year Class Inspection - Completed April 2016
- MTU 16V 396 TE94 2900hp Engines with only 1300 hours
- Kohler 33kw Generators with only 3000 hours
- Bow & Stern Thrusters
- 35 knots maximum speed
- 27 knot cruise speed
- 4 cabins sleeping 8 guests
- 3 crew cabins sleeping 5 crew

Basic Information

Category: Motor Yacht

Sub Category: Fast

Model Year: 2008

Year Built: 2008

Refit Year: 2014

Country: Italy

Fly Bridge: Yes

Dimensions

LOA: 118' 2" (36.00m)

Beam: 24' 0" (7.30m)

Min Draft: 4' 0" (1.20m)

Speed, Capacities and Weight

Cruise Speed: 28 Kts. (32 MPH)

Cruise Speed Range: 960

Max Speed: 35 Kts. (40 MPH)

Gross Tonnage: 115 Pounds

Water Capacity: 528.344104 Gallons

Holding Tank: 1849.204364 Gallons

Fuel Capacity: 2932.3097772 Gallons

Accommodations

Total Cabins: 4

Total Berths: 5

Sleeps: 8

Total Heads: 4

Captain Cabin: True

Crew Cabin: 3

Crew Berths: 5

Crew Sleeps: 5

Crew Heads: 2

Hull and Deck Information

Hull Material: GRP

Deck Material: Teak

Hull Configuration: Planing

Hull Color: Metallic White

Exterior Designer: Luca Dini Design

Interior Designer: Luca Dini Design

Engine Information

Engines: 2

Manufacturer: MTU

Model: 16V396 TE94 2150kW

Engine Type: Inboard

Fuel Type: Diesel

DETAILED INFORMATION

Walk Through - Layout

M/Y ONE O ONE has been owned by the same family since new & is VAT Paid Italian Registered. Currently located out of the water in a protected storage building for the winter season in Viareggio, Italy. Interior decor by Giorgio Armani Casa. As you enter the main salon features a large lounge chair to port with a spiral staircase to starboard allowing easy access to the upper sundeck which has a large L-shaped sette & sunpads. Two mirror image couches are located to both port & starboard directly opposite of one another. Forward is the bar area with glowing white glass accent wall just in front of the helm area. All of the counters are covered in chocolate leather with dark wood cabinets with a satin finish. The overhead & walls are covered in white leather. 4 guest cabins sleep 8 guests including a full beam master suite with his & hers bathrooms and walk-in closet & sette lounge area. A large center corridor runs the length of the guest accommodations with an artistic accent wall leading into the master cabin. The formal dining is located down forward of the main salon and features 3 large windows to both port & starboard sides allowing an excellent view of the sea while enjoying a meal. You can enter the dining area from a private staircase adjacent of the helm area from the main salon or from another entrance that leads up from the guest accommodations. Off of the salon to the port side is the galley allowing easy service from the chef & stewardesses. 3 crew cabins have a private entrance from the bow area with a cabin with private ensuite & 2 bunk rooms that share a bathroom. All the exterior decks are teak with a light gray caulking to compliment the sleek lines & windows found onboard. The aft deck has large sunpads in the center with two sitting areas to port & starboard just before you enter the interior allowing the overhang to give much needed shade when cruising on a hot day. Full walk arounds are on both the port & starboard side allowing guests to safely walk forward to the additional lounge area complete with 2 tables great for drinks or dining, and sunpads for lounging. The transom has a garage for up to a 4.5m tender, storage for water sports toys, snorkel & scuba gear, and access to the engine room & hydraulics for the garage door. The engine room also has an access hatch in the aft deck located to the port side for safe access when underway. The entire exterior has been repainted a high gloss white in 2014 at a cost of over 125,000 EURO and is in perfect condition as is the teak decks. Dark black tinted windows are seamless and give the yacht a contemporary style. Bow & stern thruster allows for easy docking.

Winter Refit & Overview

During the 2015/16 Winter Season ONE O ONE had the following work completed: - RINA 5 Year Class Inspection completed - available for commercial or private use - shafts removed & replaced - rudders removed & reinstalled - props removed, balanced & reinstalled - capstans removed, serviced & reinstalled - full service of engines - full service of generators - refresh of all interior soft goods **Manufacturers Description:** ONE O ONE, Velvet 36 takes light, space and freedom to the highest level. It boasts three spacious outdoor communal areas at the bow, stern and on the sundeck, ideal for sunbathing in absolute privacy. The extra large windscreen creates

an evocative light effect in the dinette and increases the field of vision on the bridge. The panoramic windows accentuate the luminosity of the dining room, offering an extraordinary view, just above the surface of the water. With its highly contemporary lines, the utmost attention paid to every detail, ONE O ONE also provides outstanding comfort in its interior by Giorgio Armani Casa. The three double cabins all have en-suite bathrooms with separate shower cubicles, and the large full beam master suite has two bathroom areas with crystal washbasins. The spacious, luminous lounge with its large, open view side windows provides access to all areas of the boat. The furnishings include two sofas, two coffee tables and a bar area towards the bow. A spiral staircase allows access to the sundeck. The lounge/dining area, which seats up to two people, is flooded with light thanks to the triple panoramic windows on both sides. The spectacular windscreen bestows light and maximum visibility. The master cabin, situated at the stern, has two bathrooms with the shower cubicle positioned between them.

Specifications

Length Overall - 36m Beam - 7.25m Displacement (half load) - 115t Guest cabins - 4 (8 persons)
Crew cabins - 3 (5 persons) Fuel capacity - 11,100 liters Fresh water capacity - 2,000 liters Black
water capacity - 7,000 liters Construction material - GRP Reduction gears - n.2 ZF 7550 V V-
Drive Generators - Kohler 2x33 kw 50 HZ tri-phase 380 volts Engines - MTU 2x16V 396 2900hp
Top speed - 35 knots Cruising speed - 32 knots

Exclusions

Owner's personal belongings.

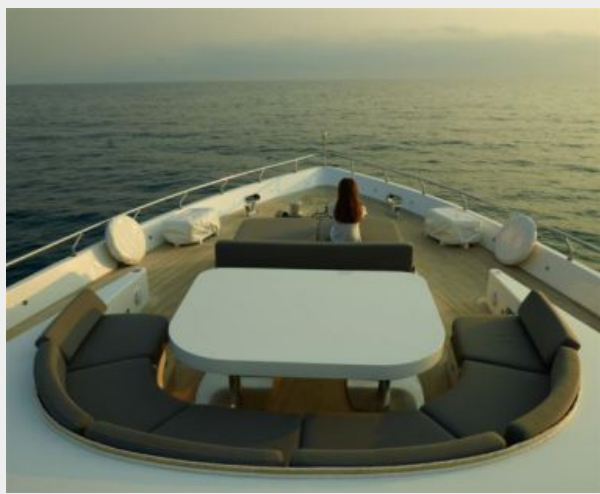
Disclaimer

The Company offers the details of this vessel or yacht in good faith but cannot guarantee or warrant the accuracy of this information nor warrant the condition of the vessel. A buyer should instruct his representatives, agents, or his surveyors, to investigate such details as the buyer desires validated. This vessel or yacht is offered subject to prior sale, price change, or withdrawal without notice.

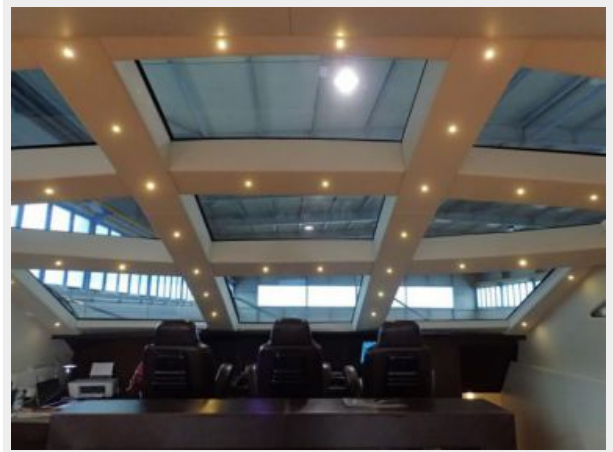
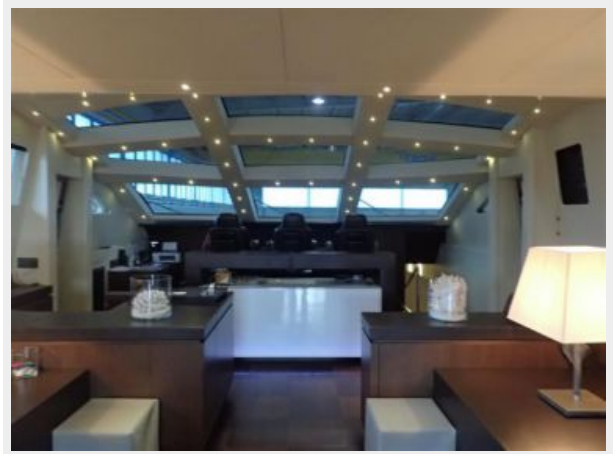
PHOTOS

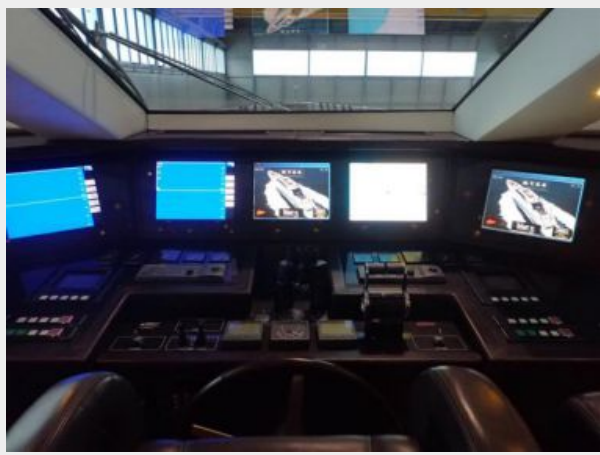
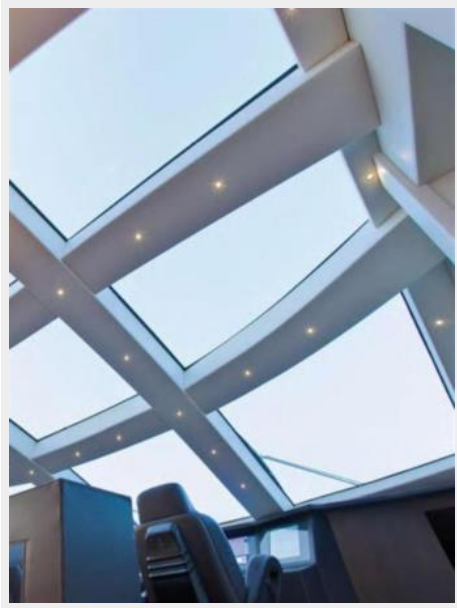


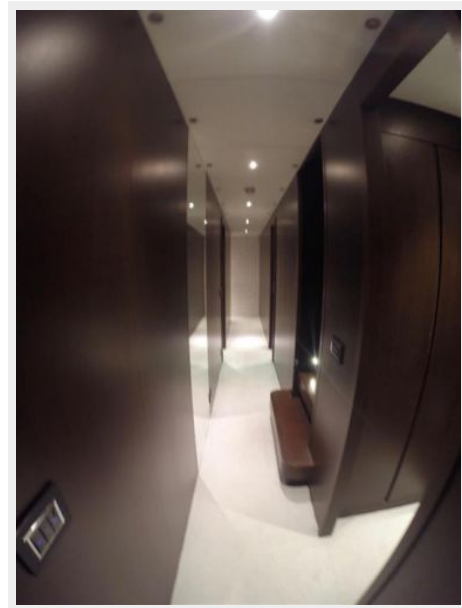


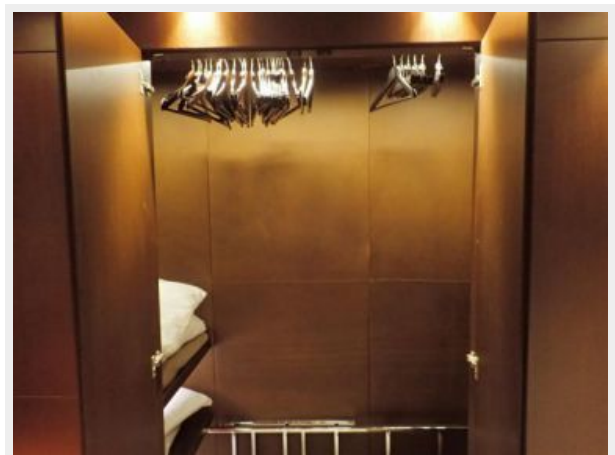
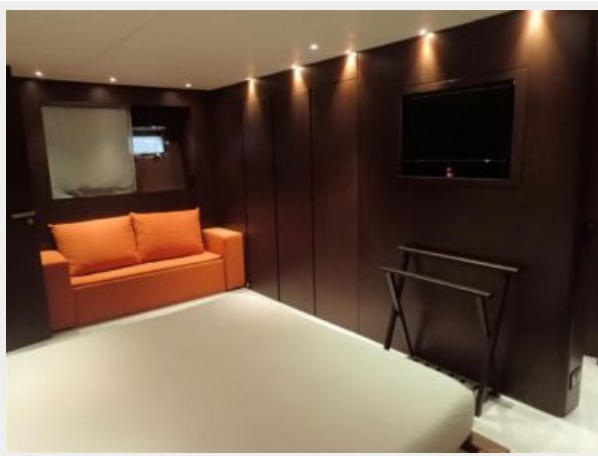






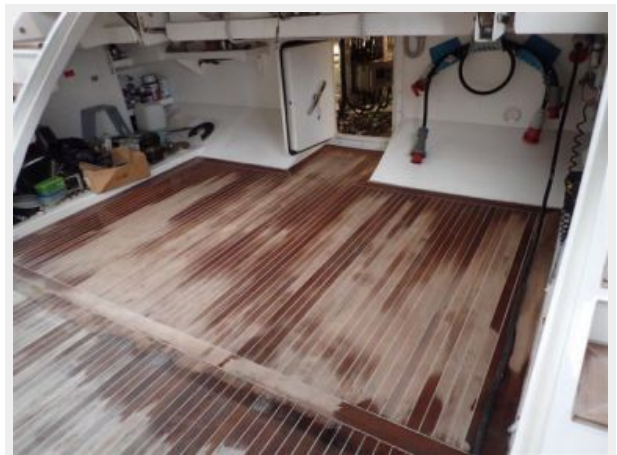
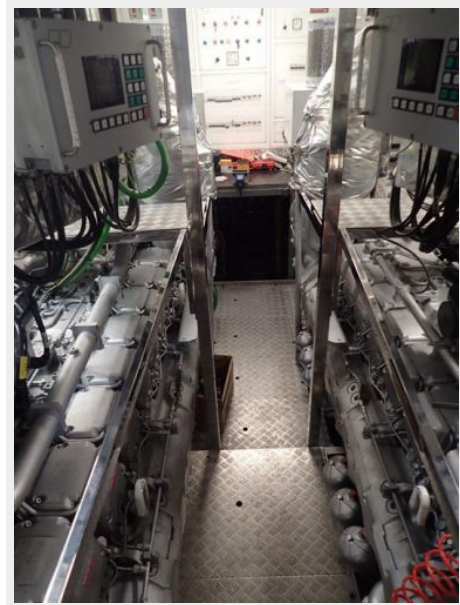
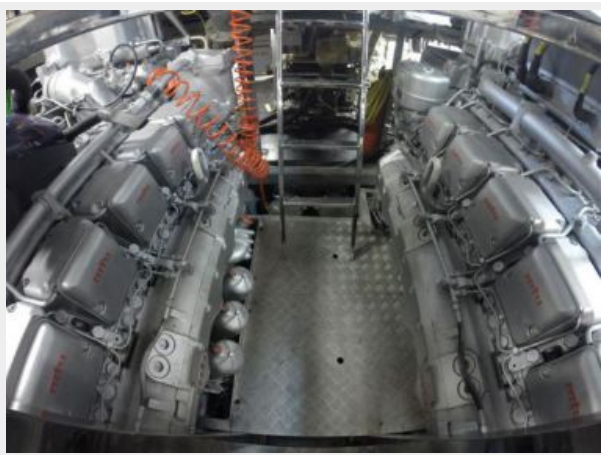














CONTACTS

Andrey Shestakov, leading yacht broker of the sales department of Shestakov Yacht Sales Inc. Shestakov Yacht Sales Inc., the official representative of the Miami/Fort Lauderdale FL headquarters.

Contact details

Email: andrey@shestakovyachtsales.com

Web: shestakovyachtsales.com/en/

Telephones

USA: +1(954)274-4435

Office hours

Monday – Saturday: **9:00 - 21:00** EDT

Sunday: **closed**

Address



Harbour Towne Marina, 850 NE 3rd St,
STE 213, Dania, FL 33004