

CARTE BLANCHE — SUNSEEKER



Судостроитель: SUNSEEKER

Год постройки: 2013

Модель: Моторная яхта

Цена: **ЦЕНА ЯХТЫ ПО ЗАПРОСУ**

Местонахождение: France

Длина общая: 81' 9" (24.90m)

Ширина: 20' 0" (6.09m)

Мин. осадка: 6' 2" (1.86m)

Макс. осадка: 6' 2" (1.86m)

Макс. скорость: 35 Kts. (40 MPH)

Купить **CARTE BLANCHE — SUNSEEKER** а также выбрать подходящую вам яхту из нашего каталога яхт вам поможет опытный яхтенный брокер Андрей Шестаков. На сегодняшний день компания **Shestakov Yacht Sales Inc.** имеет большое количество яхт в собственном списке продаж, а также тесно сотрудничает со всеми крупными яхтенными производителями по всему миру.

Для того чтобы купить яхту **CARTE BLANCHE — SUNSEEKER** а также проконсультироваться по любому вопросу связанному с покупкой, продажей, чартером яхт позвоните по телефону **+7(918)465-66-44**.

ОГЛАВЛЕНИЕ

ОГЛАВЛЕНИЕ	2
ХАРАКТЕРИСТИКИ	3
Обзор	3
Основная информация	3
Размеры	3
Скорость, вместимость и масса	3
Размещение	4
Корпус и палуба	4
Информация о двигателе	4
ПОДРОБНОЕ ОПИСАНИЕ	5
Accommodation	5
Additional	5
Vessel Description	6
Исключения	6
Отказ от ответственности	6
ФОТОГРАФИИ	7
КОНТАКТЫ	11
Контактная информация	11
Телефоны	11
Время работы	11
Адрес	11

ХАРАКТЕРИСТИКИ

Обзор

The Sunseeker 80 Predator "CARTE BLANCHE" was built in 2013 for an experienced owner. She is the only model of her kind available to purchase this side of the world! She boasts an extensive list of additional extras and a stunning interior throughout her 4 cabins, accommodating 8 guests in luxurious comfort. The Saloon really opens up to the outside world offering panoramic views. Fully Stabilized and fitted with the optimum choice of 2 x MTU 12V 2000 M94 engines, "CARTE BLANCHE" is capable of a top speed of 35 knots, cruising comfortably at 26-28 knots. She really is a "Turn Key" option and one not to be missed by any discerning buyer. Her engine hours are notably low, approx. 400 (as of 26th Nov 2015). Available for viewing at any time and at present the only 80 Predator for sale this side of the globe, "CARTE BLANCHE" really is an opportunity not to be missed.

Основная информация

Тип судна: Моторная яхта

Модельный год: 2013

Год постройки: 2013

Страна: France

Верх: Hardtop

Размеры

Длина общая: 81' 9" (24.90m)

Ширина: 20' 0" (6.09m)

Мин. осадка: 6' 2" (1.86m)

Макс. осадка: 6' 2" (1.86m)

Скорость, вместимость и масса

Макс. скорость: 35 Kts. (40 MPH)

Водоизмещение: 123458.86672 Pounds

Вместимость воды: 317.0064624 Gallons

Объем топливного бака: 1585.032312 Gallons

Размещение

Всего коек: 8

Койки экипажа: 2

Корпус и палуба

Материал корпуса: GRP

Цвет корпуса: White hull with black waterline stripe

Информация о двигателе

Двигатели: 2

Производитель: MTU

Модель: 12V 2000 M94

Тип топлива: Diesel

ПОДРОБНОЕ ОПИСАНИЕ

Accommodation

"CARTE BLANCHE" can accommodate up to 8 guests in 4 Cabins, plus an additional Crew Cabin for 2. The spacious full beam Master Stateroom is located midships with ensuite bathroom and vanity area. There is a large Forward VIP Guest Cabin, complete with ensuite, plus 2 Twin Guest Cabins to starboard and port. Crew Cabin for 2 is located aft with 2 separate single Cabins.

Additional

Aerial 2.4 metre Whip for FM Radio to match VHF Aerial on Radar arch Aft cockpit bar unit Air conditioning reverse cycle throughout Airport Express and an HDMI Socket connected to the Audio system in the Master Cabin Airport Express and an HDMI Socket connected to the Audio system in the Saloon Airport Express connected to the Audio system in the VIP Cabin Automatic bilge pumps Bose Lifestyle V35 surround system with Samsung Blu-ray Player in the Saloon Bose second zone for aft Cockpit. Four Speakercraft Aim8-Five Speakers with two Bose SA3 Amplifiers. Aux 3.5mm MP3 Bose upgrade for Foredeck - 2 x Speakercraft Marine speakers powered w/ 1 x Bose SA3 amp Bow thruster Sleipner system Carbon fibre and polished stainless steel ensign staff Ceramic hob, microwave/oven and dishwasher in galley Cleats - Stern spring cleats located on the aft edge of the hull for stern mooring purposes Dimmer switches on interior overhead lighting Electric BBQ grill in the Aft Cockpit Electric canopy for Aft Cockpit Electric refrigerator/freezer with icemaker Electric side opening access helm door Electric winch and capstan at bow with foredeck controls Electrical Seamless Transfer. Virtually seamless transfer for AV equipment when changing to shore power Fixed engine control station located in aft cockpit with engine throttles, stop & start keys and thruster control Flat screen televisions and DVD/CD/radio player in all guest cabins Generators upgrade Two Onan 27kw 60Hz (27MDKBU) Hard top with Sliding Sunroof Hydraulic lifting platform Isolation Transformer - Provides protection against poor quality and incorrectly configured shore supplies Key lock for cabin door to the Master Stateroom Pair of Retractable Cleats for tender on port and stbd corners of platform Preparation for future installation of a watermaker Safe - 2 brick - with Digital lock in the Master Walk-in wardrobe Samsung 55 LED Television in the Saloon Set of Cushion covers for all outside upholstery Simrad AIS NAIS 300 Class B AIS Transponder system with integrated GPS receiver Simrad Autopilot system with control from QS80 Joystick fitted to helmsman's chair. Simrad GS15 GPS Antenna Simrad IS40 Multifunction Instruments x 2 - displaying navigation information, including autopilot display Simrad NSO processor x 2 with Simrad OP40 Controller. Simrad RS82 VHF with DSC Simrad TX010S High Definition digital open scanner radar 6ft 10kW Sleipner Fin Stabilisation Slow speed generators with silent exhausts Socket and Bose remote control in the Aft Cockpit Sprung mattress for double bed in the Forward Stateroom Sprung mattress for double bed in the Master Stateroom Stern Docking Flood Lights with stainless steel bezels Stern thruster system - Sleipner SP300HYP Subzero UC24R refrigerator in the Saloon and Dining Surround-sound system DVD/CD/radio in saloon Teak aft cockpit floor Teak on the bathing platform and steps Teak side decks Tender recovery system

with electric recovery winch Tender Williams Turbojet 445 - 4,54m x 1,92m - 98hp 4 stroke Weber engine Three x Hatteland 'System X' 19" Glass Bridge Displays - Two for navigation & one for monitoring. Toilet system with holding tank Trim tabs Underwater lights - Aqualuma LED wide angle x 12. 4 x on stern. 4 x port side and 4 x starboard side Water purifier for ice maker - General Ecology Ultrafine in-line system with spare cartridge Wine cooler in the Saloon

Vessel Description

The Sunseeker 80 Predator "CARTE BLANCHE" was built in 2013 for an experienced owner. She is the only model of her kind available to purchase this side of the world! She boasts an extensive list of additional extras and a stunning interior throughout her 4 cabins, accommodating 8 guests in luxurious comfort. The Saloon really opens up to the outside world offering panoramic views. Fully Stabilized and fitted with the optimum choice of 2 x MTU 12V 2000 M94 engines, "CARTE BLANCHE" is capable of a top speed of 35 knots, cruising comfortably at 26-28 knots. She really is a "Turn Key" option and one not to be missed by any discerning buyer. Her engine hours are notably low, approx. 400 (as of 26th Nov 2015). Available for viewing at any time and at present the only 80 Predator for sale this side of the globe, "CARTE BLANCHE" really is an opportunity not to be missed.

Исключения

При продаже яхты исключаются личные вещи владельца.

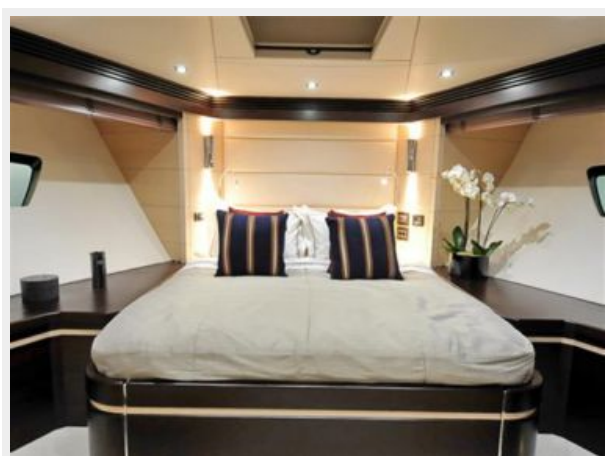
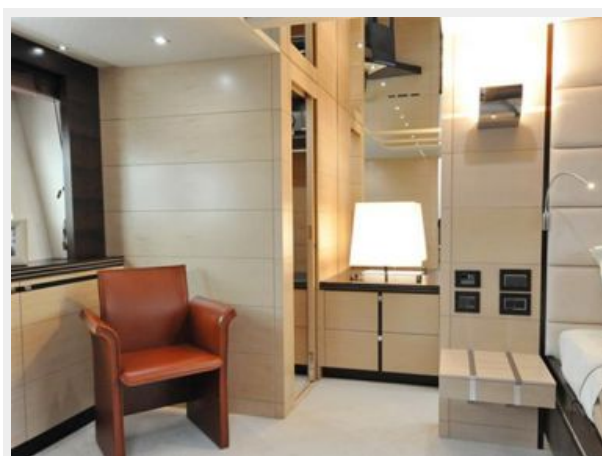
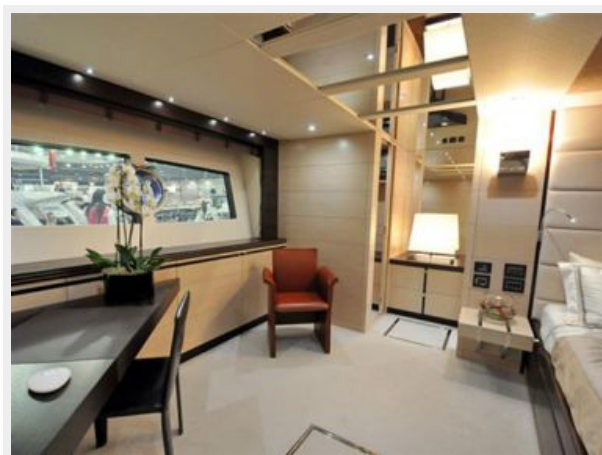
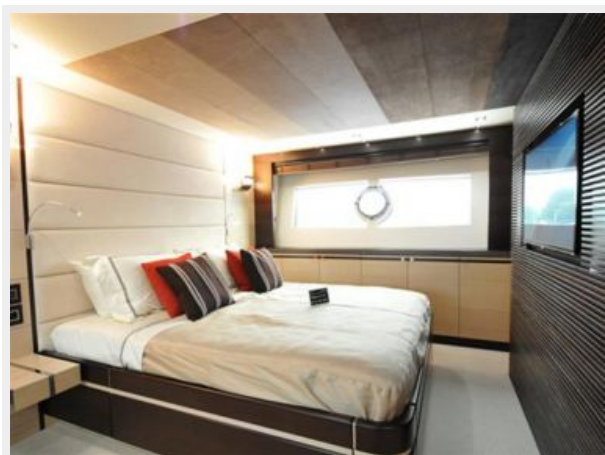
Отказ от ответственности

Компания предоставляет описание судна или яхты добросовестно, но не может гарантировать точность этой информации, а также не ручается за техническое состояние. Покупатель должен проинструктировать своих агентов или оценщиков исследовать представленную информацию более подробно, по собственному желанию. Продажа судна или яхты, изменение цены или снятие с продажи будет происходить без предварительного уведомления.

ФОТОГРАФИИ









КОНТАКТЫ

Андрей Шестаков (Andrey Shestakov) – ведущий яхтенный брокер отдела продаж яхт и судов компании Shestakov Yacht Sales Inc. Официальный представитель Shestakov Yacht Sales Inc. для русскоговорящих клиентов в центральном офисе компании в Майами/Форт Лодердейл/Флорида/США.

Контактная информация

Email: andrey@shestakovyachtsales.com

Web: shestakovyachtsales.com

Телефоны

Краснодарский край: **+7(918)465-66-44**

США, Майами, Флорида: **+1(954)274-4435**

Время работы

Понедельник – Суббота: **9:00 - 21:00**
EDT

Воскресенье: **Закрето**

Адрес



Harbour Towne Marina, 850 NE 3rd St,
STE 213, Dania, FL 33004