

55FT 1999 VIKING 55 CONVERTIBLE — VIKING



Builder: VIKING

Year Built: 1999

Model: Sport Fisherman

Price: PRICE ON APPLICATION

Location: Puerto Rico

LOA: 55' 0" (16.76m)

Beam: 17' 4" (5.28m)

Max Draft: 4' 10" (1.47m)

Our experienced yacht broker, Andrey Shestakov, will help you choose and buy a yacht that best suits your needs 55ft 1999 Viking 55 Convertible — VIKING from our catalogue. Presently, at Shestakov Yacht Sales Inc., we have a wide variety of yachts available on our sale's list. We also work in close contact with all the big yacht manufacturers from all over the world.

If you would like to buy a yacht 55ft 1999 Viking 55 Convertible — VIKING or would like help answering any questions concerning purchasing, selling or chartering a yacht, please call +1(954)274-4435

TABLE OF CONTENTS

TABLE OF CONTENTS	2
SPECIFICATIONS	7
Overview	7
Basic Information	7
Dimensions	7
Speed, Capacities and Weight	8
Accommodations	8
Hull and Deck Information	8
Engine Information	8
DETAILED INFORMATION	9
Salon	9
Galley/Dinette	9
Mater Stateroom	9
VIP Stateroom	9
Starboard Guest Stateroom	10
Heads	10
Companionway	10
Flybridge	10
Cockpit	10
Tuna Tower	11
Electronics	11
Engine Room	11
Exclusions	12
Disclaimer	12
PHOTOS	13
Front/Stbd View	13
Stbd View II	13
Stbd View IV	13

Front View	13
Front/Port View	13
Port View II	13
Port View	14
Front/Port View II	14
Aft View	14
Aft View II	14
Aft View III	14
Tower to Cockpit View	14
Tower Control Box w/Steering and Eng Controls	15
Bow View from the Tower	15
Helm w/Side Mount Single Lever Mathers Controls	15
Teak Helm Chairs	15
Helm III	15
Flybridge Front/Stbd Seating	15
Flybridge Port Seating II	16
Flybridge Port Seating	16
Spreader Lights	16
Helm II	16
Custom Engine Gauges	16
Garmin 7212 GPS/MAP Display	16
Garmin GMI 10 Speed/Engine Monitor	17
Furuno Navnet Display	17
Furuno Open Array Radar	17
Camera System	17
Simrad AP22 Autopilot	17
Helm VHF Radio Compartment	17
ICOM M504 VHF Bridge	18
ICOM M402 VHF Bridge Spare	18

Sea 2250 Single Side Band	18
Cockpit Fiberglass Oval Table	18
Cockpit	18
Autopilot Rudder Feedback	18
Lazzarette	19
Eskimo Ice Box - Stbd Cockpit Floor	19
Drink Cooler on Salon Entry Steps	19
Cockpit Bait Freezer	19
Cockpit	19
Windlass	19
Marquipt Davit 1000	20
Tender Evinrude E-Tec 40 2012	20
12' RIB Tender AB 2003 Stbd View	20
RIB	20
12' RIB Tender AB 2003 Port View	20
Salon Panoramic View	20
Salon "L" Shape Sofa	21
Salon "L" Shape Sofa II	21
Salon II	21
Galley	21
Galley	22
6 Drawer Sub Zero Refrigerator/Freezer	22
Salon Dinette	22
Kenyon 3 Burner Stove	22
Sharp Microwave/Convection Oven	22
Sink	23
Salon Bar	23
Salon Sound System	23
Main Electrical Panel	23

Sat TV	23
Salon TV	23
Master Stateroom	24
Master Stateroom II	24
Port Master III	24
Master Stateroom IV	24
Master Head	24
Master Head II	24
Forward Stateroom	25
Forward Stateroom II	25
Forwad Stateroom TV	25
Stbd Stateroom - Bunk Beds III	25
Stbd Stateroom - Bunk Beds	25
Stbd Stateroom - Bunk Beds II	25
Day Head	26
Dryer	26
Washer	26
Port Engine	26
Stbd Engine	27
Stbd Engine Outboard Side	27
Port Engine	27
Stbd Engine	27
Mathers Electronic Control Boxes	27
Port Engine Outboard Side	27
Air Conditining Units	28
Tool Box / Water maker	28
Universal Aqua Technologies 800GPD Watermaker	28
Water System- Jabsco 40PSI Water pump w/ Expansion tank	28
Eskimo Ice Machine - E I 600	28

Watermaker w/dual membranes	28
Dripless Shaft Logs	29
Engine Room Camera	29
Engine Room Camera II	29
Newmar Three Phase Battery Charger	29
Stbd Engine Dual Racor Filters with Fuel Purifier	29
ISO Boost Isolator Transformer	29
Port Engine Dual Racor Filters w/Fuel Purifier	30
Stbd Generator III	30
Stbd Generator II	30
Stbd Generator w/Sound Shield	30
Port Generator w/Sound Shield	30
Port Generator II	30
CONTACTS	31
Contact details	31
Telephones	31
Office hours	31
Address	31

SPECIFICATIONS

Overview

This second owner Viking 55 has most of the options Viking offers on 1999. Bellow are Some of the features:

- MAN D2842LE406 1,200 hp
- 2- Generators 20kw Onan
- Mathers Single Lever Side Mounted Electronic Controls
- Full Tuna Tower
- Eskimo Ice Plant - Cockpit Freezer - Steps Drink Cooler
- 6 Drawer Sub Zero Refrigerator/Freezer
- 800 GPD Watermaker-
- 12' AB Tender w/Marquipt Davit
- Garmin 7212 GPS Display
- Furuno NavNet w/4' Open Array Radar
- Camera System

DYSID:2911115

Basic Information

Category: Sport Fisherman

Sub Category: Convertible

Model Year: 1999

Year Built: 1999

Country: Puerto Rico

Dimensions

LOA: 55' 0" (16.76m)

Beam: 17' 4" (5.28m)

Max Draft: 4' 10" (1.47m)

MFG Length: 55' 10" (17.02m)

Speed, Capacities and Weight

Displacement: 68800 Pounds

Water Capacity: 250 Gallons

Fuel Capacity: 1500 Gallons

Accommodations

Total Cabins: 3

Total Heads: 2

Hull and Deck Information

Hull Material: Fiberglass

Engine Information

Engines: 2

Manufacturer: MAN

Model: D2842LE406

Engine Type: Inboard

Fuel Type: Diesel

DETAILED INFORMATION

Salon

- Sierra Aurora Corian countertop with teak bullnose on all salon surfaces
- Full Carpet Runner
- Electric panel down for matching interior window line port and starboard
- Denon Surround System
- New Hitachi Flat Screen 40" Ultravision
- Upgraded sofa styling

Galley/Dinette

- Undercounter refrigeration (3 units-2 refrigerator, 1 freezer)
- Large pull-out drawers forward above galley countertop
- Corian Sierra Aurora countertop
- Recessed electric stove (3 burner) with Corian lid covers
- Corian Sierra Aurora table with teak base
- Upgraded dinette seating style
- Cabinet pantry storage forward of dinette
- Pull-out drawer storage above companionway steps
- Electric subpanel outboard in galley

Master Stateroom

- Sierra Aurora Corian countertops with teak bullnose on entry, credenza and night tables
- Large hanging locker to port
- Flat panel Dynex TV
- Storage below master bed

VIP Stateroom

- VIP arrangement - single port upper bunk with double bed starboard
- Vlew Sonic TV
- Cedar-lined hanging locker
- Drawer storage below double berth
- One hatch in foredeck-Bomar
- Cabinet storage below upper port berth

Starboard Guest Stateroom

- Upper and lower bunks
- Corian Sierra Aurora surface on drawers
- Lift up hinged lower bunk for excess storage

Heads

- Blower system
- Mirrored ceilings with teak crown molding
- Grohe sink and shower hardware
- Vacuflush head system
- Fiberglass molded showers
- Viking fabricated sump box for shower drains
- 110 volt outlets

Companionway

- Central Vac
- Separated Washer/dryer
- Storage in bilge
- Access to shower sump and outboard discharge

Flybridge

- Stainless steel gas pistons on drink box and recessed electronics box lids
- Power Assist Steering
- Aligned helm and companion seat for symmetrical look
- Aircraft type tachometers, manifold boost pressure and exhaust temp gauges
- Viking Custom Helm Pod
- Single Lever Mathers Electronic Controls
- 12 volt outlet in radio box
- Upgraded helm chairs to Murray Brothers
- 4" chrome pedestals for Helm Chairs
- Drink box cooler on bridge

Cockpit

- Refrigerated salon step box (Drink Cooler)
- Cockpit freezer

- Livewell in cockpit sole with upgraded 1000gph pump
- (2) clearing rod holders in each tower leg, (4) in gunwales
- Overhead deck lights
- Cockpit indirect lighting

Tuna Tower

- Custom Pipewelders Tuna Tower with molded-in quartz lights
- 3-sided enclosure
- Seat with backrest
- Solid one-piece aft outrigger layback arms
- Molded-in running lights
- Mathers single lever controls

Electronics

- Furuno NavNet 3D GPS Chartplotter
- Furuno NavNet 3D Radar
- Garmin 7212 GPS
- Garmin GMI 10 Speed and Engine Data
- VHF ICOM M504
- VHF ICOM M402
- SIMRAD AP 22 Autopilot
- SAT TV KVH
- Engine Room, Cockpit and Salon Camera System

Engine Room

- Eskimo ice machine
- 800 GPD watermaker
- Engine upgrade to MAN 2842LE406 1200 hp
- Chrome package on engines
- 2 - 20kw Onan generators w/Sound Shield
- Installed tool box
- Awlgrip including all pumps and thru-hulls
- Central drainage system to reduce the number of thru-hulls
- Fuel/system priming pumps
- ISO Boost Voltage stabilizer transformer
- Newmar battery charger
- Oil exchange system

Exclusions

Owner's personal belongings.

Disclaimer

The Company offers the details of this vessel or yacht in good faith but cannot guarantee or warrant the accuracy of this information nor warrant the condition of the vessel. A buyer should instruct his representatives, agents, or his surveyors, to investigate such details as the buyer desires validated. This vessel or yacht is offered subject to prior sale, price change, or withdrawal without notice.

PHOTOS

Front/Stbd View



Stbd View II



Stbd View IV



Front View



Front/Port View



Port View II



Port View



Front/Port View II



Aft View



Aft View II



Aft View III



Tower to Cockpit View



Tower Control Box w/Steering and Eng Controls



Bow View from the Tower



Helm w/Side Mount Single Lever Mathers Controls



Teak Helm Chairs



Helm III



Flybridge Front/Stbd Seating



Flybridge Port Seating II



Flybridge Port Seating



Spreader Lights



Helm II



Custom Engine Gauges



Garmin 7212 GPS/MAP Display



Garmin GMI 10 Speed/Engine Monitor



Furuno Navnet Display



Furuno Open Array Radar



Camera System



Simrad AP22 Autopilot



Helm VHF Radio Compartment



ICOM M504 VHF Bridge



ICOM M402 VHF Bridge Spare



Sea 2250 Single Side Band



Cockpit Fiberglass Oval Table



Cockpit



Autopilot Rudder Feedback



Lazzarette



Eskimo Ice Box - Stbd Cockpit Floor



Drink Cooler on Salon Entry Steps



Cockpit Bait Freezer



Cockpit



Windlass



Marquipt Davit 1000



Tender Evinrude E-Tec 40 2012



12' RIB Tender AB 2003 Stbd View



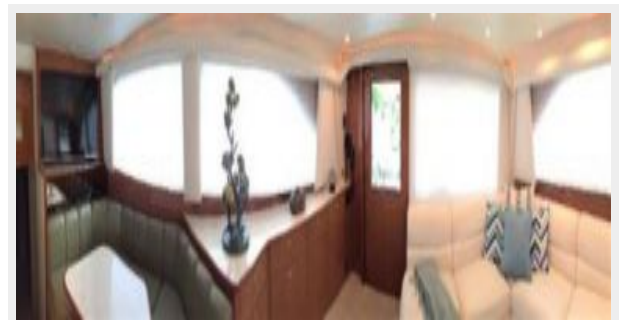
RIB



12' RIB Tender AB 2003 Port View



Salon Panoramic View



Salon "L" Shape Sofa II



Salon "L" Shape Sofa



Salon II



Galley



Galley



6 Drawer Sub Zero Refrigerator/Freezer



Salon Dinette



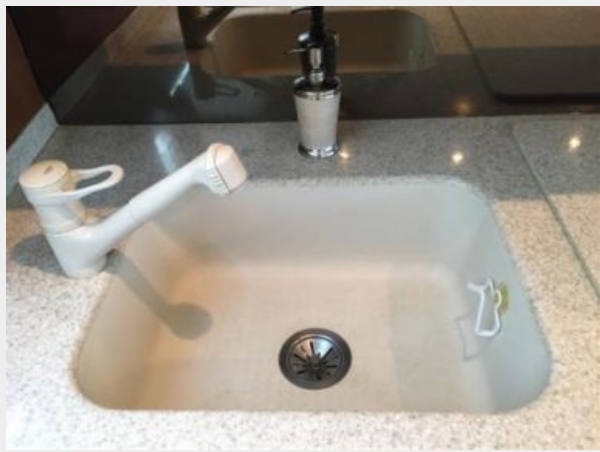
Kenyon 3 Burner Stove



Sharp Microwave/Convection Oven



Sink



Salon Bar



Salon Sound System



Main Electrical Panel



Sat TV



Salon TV



Master Stateroom



Master Stateroom II



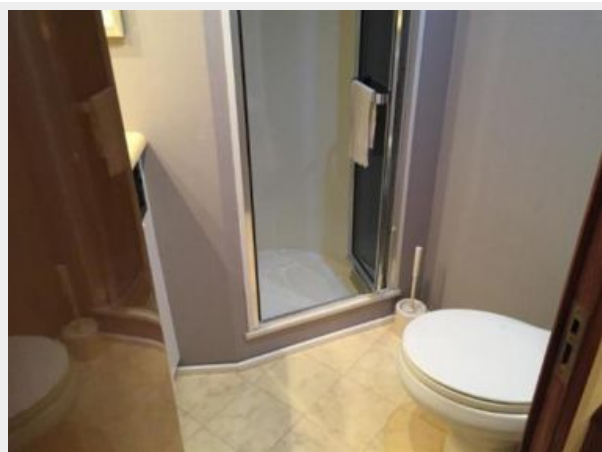
Port Master III



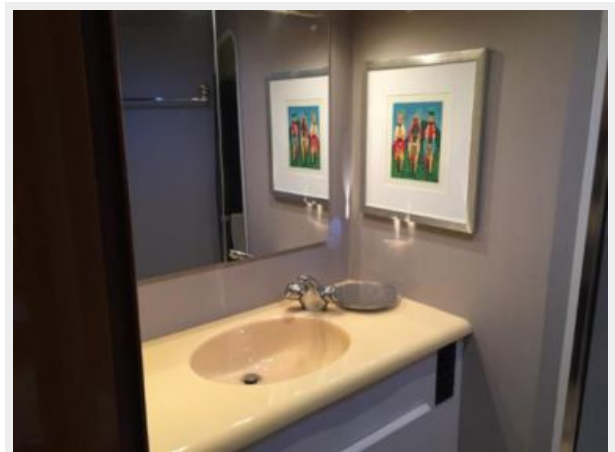
Master Stateroom IV



Master Head



Master Head II



Forward Stateroom



Forward Stateroom II



Forwad Stateroom TV



Stbd Stateroom - Bunk Beds III



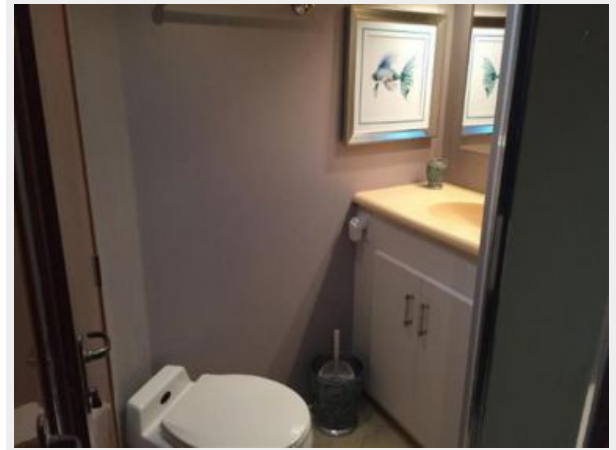
Stbd Stateroom - Bunk Beds



Stbd Stateroom - Bunk Beds II



Day Head



Dryer



Washer



Port Engine



Stbd Engine



Stbd Engine Outboard Side



Port Engine



Stbd Engine



Mathers Electronic Control Boxes



Port Engine Outboard Side



Air Conditing Units



Tool Box / Water maker



Universal Aqua Technologies 800GPD Watermaker



Water System- Jabsco 40PSI Water pump w/ Expansion tank



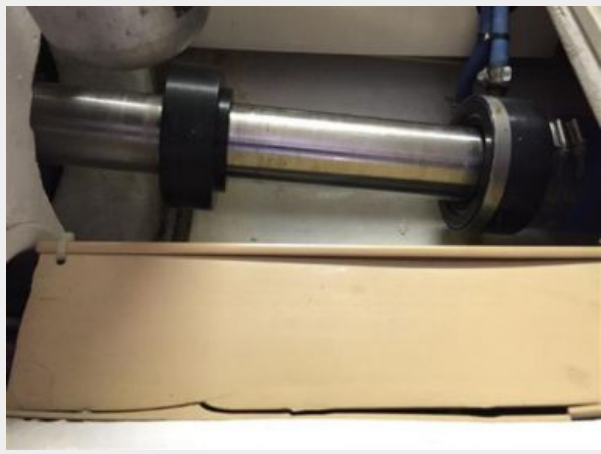
Eskimo Ice Machine - E I 600



Watermaker w/dual membranes



Dripless Shaft Logs



Engine Room Camera



Engine Room Camera II



Newmar Three Phase Battery Charger



ISO Boost Isolator Transformer



Stbd Engine Dual Racor Filters with Fuel Purifier



Port Engine Dual Racor Filters w/Fuel Purifier



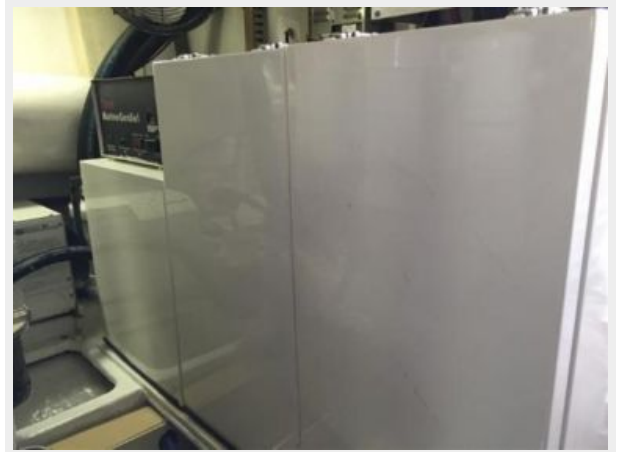
Stbd Generator III



Stbd Generator II



Stbd Generator w/Sound Shield



Port Generator w/Sound Shield



Port Generator II



CONTACTS

Andrey Shestakov, leading yacht broker of the sales department of Shestakov Yacht Sales Inc. Shestakov Yacht Sales Inc., the official representative of the Miami/Fort Lauderdale FL headquarters.

Contact details

Email: andrey@shestakovyachtsales.com

Web: shestakovyachtsales.com/en/

Telephones

USA: +1(954)274-4435

Office hours

Monday – Saturday: **9:00 - 21:00** EDT

Sunday: **closed**

Address



Harbour Towne Marina, 850 NE 3rd St,
STE 213, Dania, FL 33004