

# 55FT 1999 VIKING 55 CONVERTIBLE — VIKING



**Судостроитель:** VIKING

**Год постройки:** 1999

**Модель:** Катер для спортивной рыбалки

**Цена:** ЦЕНА ЯХТЫ ПО ЗАПРОСУ

**Местонахождение:** Puerto Rico

**Длина общая:** 55' 0" (16.76m)

**Ширина:** 17' 4" (5.28m)

**Макс. осадка:** 4' 10" (1.47m)

Купить 55ft 1999 Viking 55 Convertible — VIKING а также выбрать подходящую вам яхту из нашего каталога яхт вам поможет опытный яхтенный брокер Андрей Шестаков. На сегодняшний день компания Shestakov Yacht Sales Inc. имеет большое количество яхт в собственном списке продаж, а также тесно сотрудничает со всеми крупными яхтенными производителями по всему миру. Для того чтобы купить яхту 55ft 1999 Viking 55 Convertible — VIKING а также проконсультироваться по любому вопросу связанному с покупкой, продажей, чартером яхт позвоните по телефону **+7(918)465-66-44**.

# ОГЛАВЛЕНИЕ

ОГЛАВЛЕНИЕ	2
ХАРАКТЕРИСТИКИ	7
Обзор	7
Основная информация	7
Размеры	7
Скорость, вместимость и масса	8
Размещение	8
Корпус и палуба	8
Информация о двигателе	8
ПОДРОБНОЕ ОПИСАНИЕ	9
Salon	9
Galley/Dinette	9
Mater Stateroom	9
VIP Stateroom	9
Starboard Guest Stateroom	10
Heads	10
Companionway	10
Flybridge	10
Cockpit	10
Tuna Tower	11
Electronics	11
Engine Room	11
Исключения	12
Отказ от ответственности	12
ФОТОГРАФИИ	13
Front/Stbd View	13
Stbd View II	13
Stbd View IV	13

Front View	13
Front/Port View	13
Port View II	13
Port View	14
Front/Port View II	14
Aft View	14
Aft View II	14
Aft View III	14
Tower to Cockpit View	14
Tower Control Box w/Steering and Eng Controls	15
Bow View from the Tower	15
Helm w/Side Mount Single Lever Mathers Controls	15
Teak Helm Chairs	15
Helm III	15
Flybridge Front/Stbd Seating	15
Flybridge Port Seating II	16
Flybridge Port Seating	16
Spreader Lights	16
Helm II	16
Custom Engine Gauges	16
Garmin 7212 GPS/MAP Display	16
Garmin GMI 10 Speed/Engine Monitor	17
Furuno Navnet Display	17
Furuno Open Array Radar	17
Camera System	17
Simrad AP22 Autopilot	17
Helm VHF Radio Compartment	17
ICOM M504 VHF Bridge	18
ICOM M402 VHF Bridge Spare	18

Sea 2250 Single Side Band	18
Cockpit Fiberglass Oval Table	18
Cockpit	18
Autopilot Rudder Feedback	18
Lazzarette	19
Eskimo Ice Box - Stbd Cockpit Floor	19
Drink Cooler on Salon Entry Steps	19
Cockpit Bait Freezer	19
Cockpit	19
Windlass	19
Marquipt Davit 1000	20
Tender Evinrude E-Tec 40 2012	20
12' RIB Tender AB 2003 Stbd View	20
RIB	20
12' RIB Tender AB 2003 Port View	20
Salon Panoramic View	20
Salon "L" Shape Sofa	21
Salon "L" Shape Sofa II	21
Salon II	21
Galley	21
Galley	22
6 Drawer Sub Zero Refrigerator/Freezer	22
Salon Dinette	22
Kenyon 3 Burner Stove	22
Sharp Microwave/Convection Oven	22
Sink	23
Salon Bar	23
Salon Sound System	23
Main Electrical Panel	23

Sat TV	23
Salon TV	23
Master Stateroom	24
Master Stateroom II	24
Port Master III	24
Master Stateroom IV	24
Master Head	24
Master Head II	24
Forward Stateroom	25
Forward Stateroom II	25
Forwad Stateroom TV	25
Stbd Stateroom - Bunk Beds III	25
Stbd Stateroom - Bunk Beds	25
Stbd Stateroom - Bunk Beds II	25
Day Head	26
Dryer	26
Washer	26
Port Engine	26
Stbd Engine	27
Stbd Engine Outboard Side	27
Port Engine	27
Stbd Engine	27
Mathers Electronic Control Boxes	27
Port Engine Outboard Side	27
Air Conditining Units	28
Tool Box / Water maker	28
Universal Aqua Technologies 800GPD Watermaker	28
Water System- Jabsco 40PSI Water pump w/ Expansion tank	28
Eskimo Ice Machine - E I 600	28

Watermaker w/dual membranes	28
Dripless Shaft Logs	29
Engine Room Camera	29
Engine Room Camera II	29
Newmar Three Phase Battery Charger	29
Stbd Engine Dual Racor Filters with Fuel Purifier	29
ISO Boost Isolator Transformer	29
Port Engine Dual Racor Filters w/Fuel Purifier	30
Stbd Generator III	30
Stbd Generator II	30
Stbd Generator w/Sound Shield	30
Port Generator w/Sound Shield	30
Port Generator II	30
<b>КОНТАКТЫ</b>	<b>31</b>
Контактная информация	31
Телефоны	31
Время работы	31
Адрес	31

# ХАРАКТЕРИСТИКИ

## Обзор

This second owner Viking 55 has most of the options Viking offers on 1999. Bellow are Some of the features:

- MAN D2842LE406 1,200 hp
- 2- Generators 20kw Onan
- Mathers Single Lever Side Mounted Electronic Controls
- Full Tuna Tower
- Eskimo Ice Plant - Cockpit Freezer - Steps Drink Cooler
- 6 Drawer Sub Zero Refrigerator/Freezer
- 800 GPD Watermaker-
- 12' AB Tender w/Marquipt Davit
- Garmin 7212 GPS Display
- Furuno NavNet w/4' Open Array Radar
- Camera System

DYSID:2911115

## Основная информация

**Тип судна:** Катер для спортивной рыбалки

**Подкатегория:** Convertible

**Модельный год:** 1999

**Год постройки:** 1999

**Страна:** Puerto Rico

## Размеры

**Длина общая:** 55' 0" (16.76m)

**Ширина:** 17' 4" (5.28m)

**Макс. осадка:** 4' 10" (1.47m)

**Длина привального бруса:** 55' 10" (17.02m)

---

## Скорость, вместимость и масса

---

Водоизмещение: 68800 Pounds

Вместимость воды: 250 Gallons

Объем топливного бака: 1500 Gallons

---

## Размещение

---

Всего кают: 3

Всего ком. состава: 2

---

## Корпус и палуба

---

Материал корпуса: Fiberglass

---

## Информация о двигателе

---

Двигатели: 2

Производитель: MAN

Модель: D2842LE406

Тип двигателя: Inboard

Тип топлива: Diesel



---

# ПОДРОБНОЕ ОПИСАНИЕ

---

## Salon

---

- Sierra Aurora Corian countertop with teak bullnose on all salon surfaces
- Full Carpet Runner
- Electric panel down for matching interior window line port and starboard
- Denon Surround System
- New Hitachi Flat Screen 40" Ultravision
- Upgraded sofa styling

## Galley/Dinette

---

- Undercounter refrigeration (3 units-2 refrigerator, 1 freezer)
- Large pull-out drawers forward above galley countertop
- Corian Sierra Aurora countertop
- Recessed electric stove (3 burner) with Corian lid covers
- Corian Sierra Aurora table with teak base
- Upgraded dinette seating style
- Cabinet pantry storage forward of dinette
- Pull-out drawer storage above companionway steps
- Electric subpanel outboard in galley

## Master Stateroom

---

- Sierra Aurora Corian countertops with teak bullnose on entry, credenza and night tables
- Large hanging locker to port
- Flat panel Dynex TV
- Storage below master bed

## VIP Stateroom

---

- VIP arrangement - single port upper bunk with double bed starboard
- Vlew Sonic TV
- Cedar-lined hanging locker
- Drawer storage below double berth
- One hatch in foredeck-Bomar
- Cabinet storage below upper port berth

---

## Starboard Guest Stateroom

---

- Upper and lower bunks
- Corian Sierra Aurora surface on drawers
- Lift up hinged lower bunk for excess storage

---

## Heads

---

- Blower system
- Mirrored ceilings with teak crown molding
- Grohe sink and shower hardware
- Vacuflush head system
- Fiberglass molded showers
- Viking fabricated sump box for shower drains
- 110 volt outlets

---

## Companionway

---

- Central Vac
- Separated Washer/dryer
- Storage in bilge
- Access to shower sump and outboard discharge

---

## Flybridge

---

- Stainless steel gas pistons on drink box and recessed electronics box lids
- Power Assist Steering
- Aligned helm and companion seat for symmetrical look
- Aircraft type tachometers, manifold boost pressure and exhaust temp gauges
- Viking Custom Helm Pod
- Single Lever Mathers Electronic Controls
- 12 volt outlet in radio box
- Upgraded helm chairs to Murray Brothers
- 4" chrome pedestals for Helm Chairs
- Drink box cooler on bridge

---

## Cockpit

---

- Refrigerated salon step box (Drink Cooler)
- Cockpit freezer

- Livewell in cockpit sole with upgraded 1000gph pump
- (2) clearing rod holders in each tower leg, (4) in gunwales
- Overhead deck lights
- Cockpit indirect lighting

---

## Tuna Tower

---

- Custom Pipewelders Tuna Tower with molded-in quartz lights
- 3-sided enclosure
- Seat with backrest
- Solid one-piece aft outrigger layback arms
- Molded-in running lights
- Mathers single lever controls

---

## Electronics

---

- Furuno NavNet 3D GPS Chartplotter
- Furuno NavNet 3D Radar
- Garmin 7212 GPS
- Garmin GMI 10 Speed and Engine Data
- VHF ICOM M504
- VHF ICOM M402
- SIMRAD AP 22 Autopilot
- SAT TV KVH
- Engine Room, Cockpit and Salon Camera System

---

## Engine Room

---

- Eskimo ice machine
- 800 GPD watermaker
- Engine upgrade to MAN 2842LE406 1200 hp
- Chrome package on engines
- 2 - 20kw Onan generators w/Sound Shield
- Installed tool box
- Awlgrip including all pumps and thru-hulls
- Central drainage system to reduce the number of thru-hulls
- Fuel/system priming pumps
- ISO Boost Voltage stabilizer transformer
- Newmar battery charger
- Oil exchange system

---

## Исключения

---

При продаже яхты исключаются личные вещи владельца.

---

## Отказ от ответственности

---

Компания предоставляет описание судна или яхты добросовестно, но не может гарантировать точность этой информации, а также не ручается за техническое состояние. Покупатель должен проинструктировать своих агентов или оценщиков исследовать представленную информацию более подробно, по собственному желанию. Продажа судна или яхты, изменение цены или снятие с продажи будет происходить без предварительного уведомления.

# ФОТОГРАФИИ

**Front/Stbd View**



**Stbd View II**



**Stbd View IV**



**Front View**



**Front/Port View**



**Port View II**



**Port View**



**Front/Port View II**



**Aft View**



**Aft View II**



**Aft View III**



**Tower to Cockpit View**



**Tower Control Box w/Steering and Eng Controls**



**Bow View from the Tower**



**Helm w/Side Mount Single Lever Mathers Controls**



**Teak Helm Chairs**



**Helm III**



**Flybridge Front/Stbd Seating**



**Flybridge Port Seating II**



**Flybridge Port Seating**



**Spreader Lights**



**Helm II**



**Custom Engine Gauges**



**Garmin 7212 GPS/MAP Display**





**Garmin GMI 10 Speed/Engine Monitor**



**Furuno Navnet Display**



**Furuno Open Array Radar**



**Camera System**



**Simrad AP22 Autopilot**



**Helm VHF Radio Compartment**



**ICOM M504 VHF Bridge**



**ICOM M402 VHF Bridge Spare**



**Sea 2250 Single Side Band**



**Cockpit Fiberglass Oval Table**



**Cockpit**



**Autopilot Rudder Feedback**



**Lazzarette**



**Eskimo Ice Box - Stbd Cockpit Floor**



**Drink Cooler on Salon Entry Steps**



**Cockpit Bait Freezer**



**Cockpit**



**Windlass**



**Marquipt Davit 1000**



**Tender Evinrude E-Tec 40 2012**



**12' RIB Tender AB 2003 Stbd View**



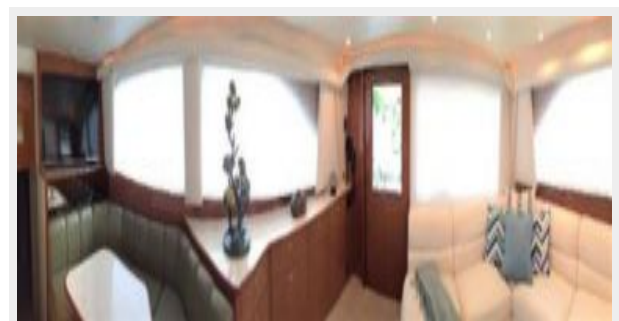
**RIB**



**12' RIB Tender AB 2003 Port View**



**Salon Panoramic View**



Salon "L" Shape Sofa II



Salon "L" Shape Sofa



Salon II



Galley



**Galley**



**6 Drawer Sub Zero Refrigerator/Freezer**



**Salon Dinette**



**Kenyon 3 Burner Stove**



**Sharp Microwave/Convection Oven**



**Sink**



**Salon Bar**



**Salon Sound System**



**Main Electrical Panel**



**Sat TV**



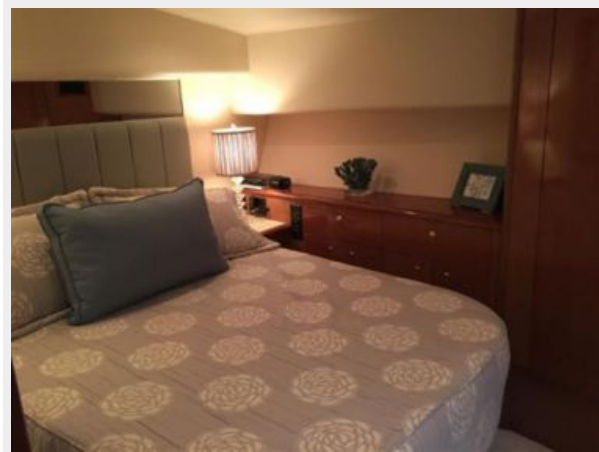
**Salon TV**



**Master Stateroom**



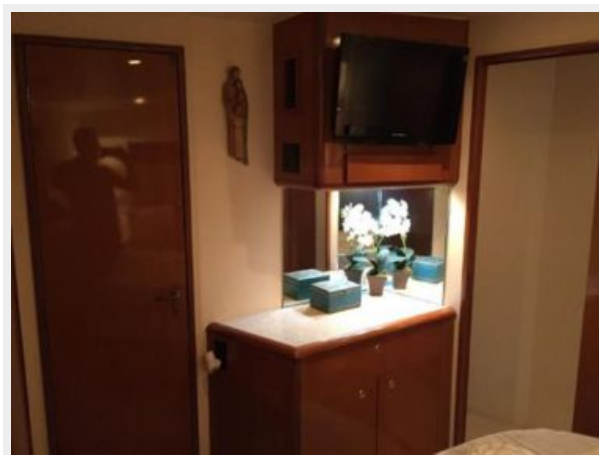
**Master Stateroom II**



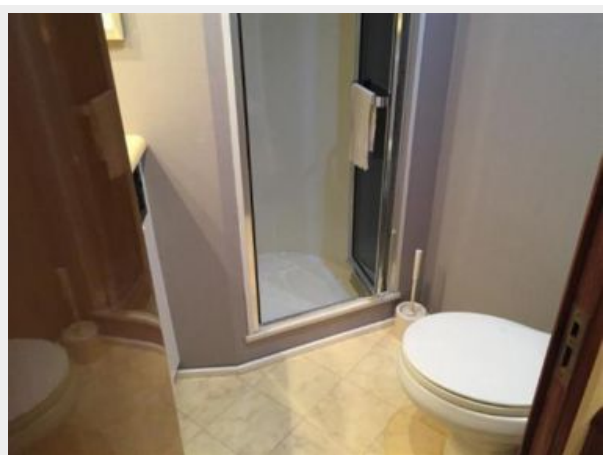
**Port Master III**



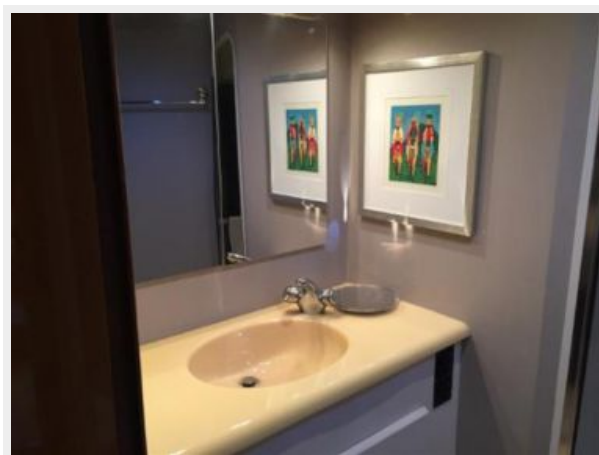
**Master Stateroom IV**



**Master Head**



**Master Head II**





**Forward Stateroom**



**Forward Stateroom II**



**Forwad Stateroom TV**



**Stbd Stateroom - Bunk Beds III**



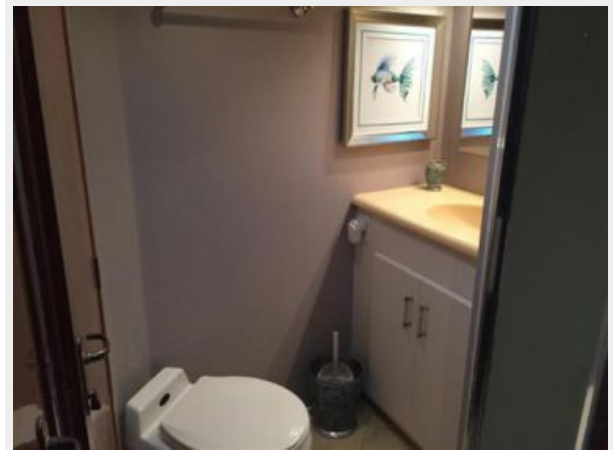
**Stbd Stateroom - Bunk Beds**



**Stbd Stateroom - Bunk Beds II**



### Day Head



### Dryer



### Washer



### Port Engine



**Stbd Engine**



**Stbd Engine Outboard Side**



**Port Engine**



**Stbd Engine**



**Mathers Electronic Control Boxes**



**Port Engine Outboard Side**



### Air Conditing Units



### Tool Box / Water maker



### Universal Aqua Technologies 800GPD Watermaker



### Water System- Jabsco 40PSI Water pump w/ Expansion tank



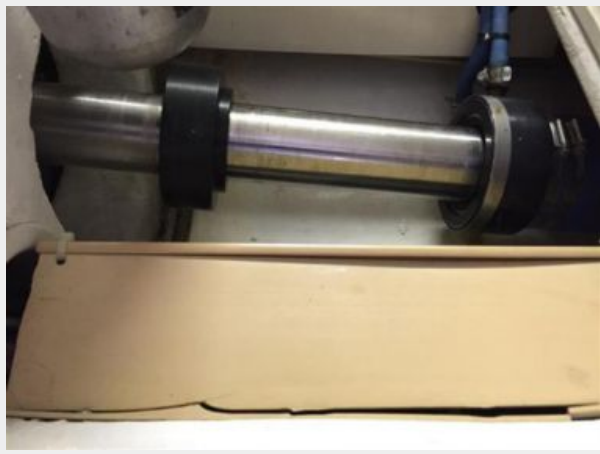
### Eskimo Ice Machine - E I 600



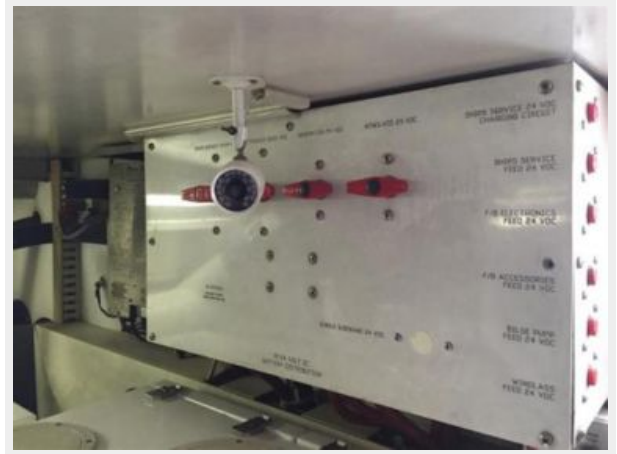
### Watermaker w/dual membranes



**Dripless Shaft Logs**



**Engine Room Camera**



**Engine Room Camera II**



**Newmar Three Phase Battery Charger**



**ISO Boost Isolator Transformer**



**Stbd Engine Dual Racor Filters with Fuel Purifier**



**Port Engine Dual Racor Filters w/Fuel Purifier**



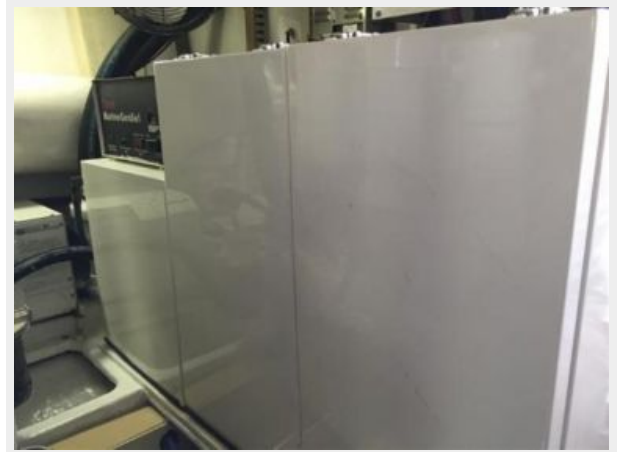
**Stbd Generator III**



**Stbd Generator II**



**Stbd Generator w/Sound Shield**



**Port Generator w/Sound Shield**



**Port Generator II**



# КОНТАКТЫ

---

Андрей Шестаков (Andrey Shestakov) – ведущий яхтенный брокер отдела продаж яхт и судов компании Shestakov Yacht Sales Inc. Официальный представитель Shestakov Yacht Sales Inc. для русскоговорящих клиентов в центральном офисе компании в Майами/Форт Лодердейл/Флорида/США.

## Контактная информация

---

Email: [andrey@shestakovyachtsales.com](mailto:andrey@shestakovyachtsales.com)

Web: [shestakovyachtsales.com](http://shestakovyachtsales.com)

## Телефоны

---

Краснодарский край: **+7(918)465-66-44**

США, Майами, Флорида: **+1(954)274-4435**

## Время работы

---

Понедельник – Суббота: **9:00 - 21:00**  
EDT

Воскресенье: **Закрито**

## Адрес

---



Harbour Towne Marina, 850 NE 3rd St,  
STE 213, Dania, FL 33004