

## DYNA 60 — DYNA



**Builder:** DYNA

**Year Built:** 2015

**Model:** Motor Yacht

**Price:** PRICE ON APPLICATION

**Location:** United States

**LOA:** 60' 0" (18.29m)

**Beam:** 16' 4" (4.98m)

**Max Draft:** 5' 2" (1.57m)

Our experienced yacht broker, Andrey Shestakov, will help you choose and buy a yacht that best suits your needs **Dyna 60 — DYNA** from our catalogue. Presently, at Shestakov Yacht Sales Inc., we have a wide variety of yachts available on our sale's list. We also work in close contact with all the big yacht manufacturers from all over the world.

If you would like to buy a yacht **Dyna 60 — DYNA** or would like help answering any questions concerning purchasing, selling or chartering a yacht, please call **+1(954)274-4435**

# TABLE OF CONTENTS

---

TABLE OF CONTENTS	2
SPECIFICATIONS	4
Overview	4
Basic Information	4
Dimensions	4
Speed, Capacities and Weight	5
Accommodations	5
Hull and Deck Information	5
Engine Information	5
DETAILED INFORMATION	6
Interior	6
Galley, Dining Area & Helm Station	6
Salon	7
Master Stateroom	7
VIP Stateroom	8
Twin Guest Cabin	8
Master, VIP and Guest Head	8
Aft Crew Quarter	9
Crew Head	9
Flybridge and Upper Helm Station	10
Mechanical & Miscellaneous	11
Deck Equipment	11
Aft Deck	12
Engine Room	12
Electrical	13
Notes	14
Disclaimer	14
Exclusions	14

---

Disclaimer	14
PHOTOS	15
CONTACTS	21
Contact details	21
Telephones	21
Office hours	21
Address	21

---

# SPECIFICATIONS

---

## Overview

---

Distinctively Dyna!.....Dyna Yachts is proud to announce the arrival of Dyna's brand new 60' Flybridge Hard Top Motoryacht to South Florida. Marked by graceful curves this vessel's beautiful teak and glass European-styled interior features 360 degree window views that let in plenty of natural light. Enter the main salon through the aft deck's full sliding glass doors to wide open comfortable space displaying teak cabinetry, leather seating, and modern finishes. The open flybridge comfortably seats 10 where you can relax on large curved Sunbrella covered settees while entertaining from the wet bar with electric grill. The forward deck boasts three reclining Sunbrella covered sunpad loungers perfect for soaking up rays. Three cabins sleep 6 including an impressive Master Suite with king sized bed, custom upholstery, separate sitting area and twin dressing tables. Each cabin has its own European styled head. Plus separate crew quarters for two that is equally well-appointed. This vessel arrives with many optional upgrades already installed including twin MAN R6-800 800hp engines, Onan 17kw/60hz generator, hard top upgraded Nav System, Entertainment package, hydraulic swim platform, and Seavision LED Underwater Lights. This well-built, beautifully appointed vessel represents great value for the price and won't last long.

## Basic Information

---

**Category:** Motor Yacht

**Model Year:** 2016

**Year Built:** 2015

**Country:** United States

**Fly Bridge:** Yes

## Dimensions

---

**LOA:** 60' 0" (18.29m)

**LWL:** 60' 0" (18.29m)

**Beam:** 16' 4" (4.98m)

**Max Draft:** 5' 2" (1.57m)

**MFG Length:** 63' 10" (19.46m)

---

## Speed, Capacities and Weight

---

**Displacement:** 62000 Pounds

**Water Capacity:** 180 Gallons

**Fuel Capacity:** 800 Gallons

---

## Accommodations

---

**Total Cabins:** 3

**Total Berths:** 4

**Sleeps:** 6

**Total Heads:** 2

**Crew Cabin:** 1

**Crew Berths:** 2

**Crew Sleeps:** 2

**Crew Heads:** 1

---

## Hull and Deck Information

---

**Hull Material:** Fiberglass

**Deck Material:** Fiberglass

**Hull Configuration:** Deep Vee

**Hull Color:** White

---

## Engine Information

---

**Engines:** 2

**Manufacturer:** MAN

**Model:** R6-800

**Engine Type:** Inboard

**Fuel Type:** Diesel

---

# DETAILED INFORMATION

---

## Interior

---

- Plush carpeting throughout with wooden galley flooring
- Teak wood veneer cover interior sides, cabinets and cabinet tops
- Upholstered fabric curtains, bed mattress cover, pillows and bedspreads
- Wide bench leather settee seating
- Cabinetry and woodwork is superbly finished in a satin varnish
- Cantalupi LED ceiling lights throughout
- Vimar switches and outlets
  - GFI outlet in cabin heads and galley area

## Galley, Dining Area & Helm Station

---

- Main helm side door\*\*
- Lower helm station with two (2) Siena leather Pilot seats\*\*
- Navigation switches panel
- Electronic engine controls and instruments
- Windlass control
- Search light control
- Fuel gauges
- Rudder and trim tab indicator
- Bow & stern thruster controls
- Ship's intercom
- Leather settee surrounds teak dining table with two side chairs integrated into its base (seating for 8)
- Access stairs to lower deck and flybridge with handrails

- Bar cabinet
- Galley granite counter tops
- Stainless steel double sink with chopping board
- Electric Miele cooktop with 3 burners and exhaust blower
- Teak wood veneer paneled refrigerator
- Miele Convection microwave/oven
- 360 degree window views · Concealed electrical panels with main switch, AC & DC breakers

---

## Salon

---

- Leather Settee with storage under and coffee table
- Entertainment cabinet w/ ” Samsung television\*\*
- Fusion DVD player with speakers
- Cabinets and drawers for storage
- Vimar switches and power sockets
- LED ceiling lights

---

## Master Stateroom

---

- King size berth
- Twin nightstands with lamp lighting
- Twin settees with teak table
- Twin dressing tables
- Lighted hanging locker
- Ceiling & reading lights
- 40” Samsung television with remote control\*\*
- Fusion Stereo with speakers\*\*

- Ship's intercom
- Private access to head

---

## VIP Stateroom

---

- King size berth with storage
- Lighted hanging locker
- Nightstand with drawers
- Ceiling & reading lights
- Ship's intercom
- 40" Samsung television with remote control\*\*
- DVD player and Fusion stereo with 2 stereo speakers\*\*
- Vertical portlights
- Opening portholes
- Escape hatch to foredeck

---

## Twin Guest Cabin

---

- Two single beds with storage
- Lighted hanging locker
- Shared nightstand
- Ceiling & reading lights
- Ship's Intercom
- Opening portholes
- Fusion Stereo w/ 2 speakers
- Samsung TV\*\*

---

## Master, VIP and Guest Head

---



- Mirrored medicine cabinet
- European styled wash basin & faucet
- Vacuflush marine toilet w/holding tank for sea/dockside discharge
- Granite countertop with tile floor
- Enclosed shower with glass door, teak grate floor & integrated bench seating
- Stainless fittings & holders
- Opening porthole
- Extractor vent fan

---

## Aft Crew Quarter

---

- Two single beds with storage
- Lighted hanging locker
- Twin nightstands
- Ceiling & reading lights
- Ship's Intercom
- Opening portholes
- 2 speakers connected from salon DVD player
- Panasonic TV\*\*
- Washer and dryer\*\*
- Cabinets and lockers
- Microwave
- Settee and Table Emergency escape hatch
- Emergency escape hatch

---

## Crew Head

---

- Mirrored medicine cabinet

- European styled wash basin & faucet
- Vacuflush marine toilet w/holding tank for sea/dockside discharge
- Corian countertop with fiberglass floor
- Stainless fittings & holders
- Extractor vent fan

## Flybridge and Upper Helm Station

---

- Hardtop with built-in lighting\*\* · Electronic engine controls · Fusion Stereo w/ speakers
- Flybridge instrument panel with RPM, cooling water temp & oil pressure gauges
- Navigation System including 2 Garmin 12" touch screen, GPS w/electronic charts, fishfinder, radar and VHF radio\*\*
- Start/stop buttons and engines keys
- Audible and visual engine alarm
- Bilge pump audible alarm
- Remote windlass control
- Search light with remote control
- Rudder and trim tab indicators
- Bow thruster control
- Ship's intercom
- Bench helm seat for two with Sunbrella\*\* covering
- Wet bar w/ cabinet for ice maker or storage
- Kenyon Electric BBQ grill\*\*
- Wide bench settees with Sunbrella\*\* covered cushions and table (seating for 8+)
- Access hatch from cockpit stairway
- Navigation lights
- Waterproof stereo speakers

---

## Mechanical & Miscellaneous

---

- Two (2) MAN R6-800 800p engines\*\*
- Onan generator 17kw\*\*
- Stern thruster\*\*
- S.S. Water tank
- Water level gauge
- 20 gallon water heater connected to Gen set cooling system
- Grey water tank
- Holding tank w/macerator pump and sea/dockside discharge
- Holding tank level gauge
- Manual bilge pump
- Sea water strainers
- Sea water pump w/forward deck wash down (sea water
- Aft deck wash down (fresh water
- Marine Air A/C w/reverse cycle hot & cold (60,000 BTUs)

---

## Deck Equipment

---

- Reversible electric Lofrans windlass w/remote control from both helms, direct control on fore deck
- S/S CQR anchor 70 lbs with 50m galvanized chain
- Stainless steel bow roller, chainway, bow pulpit, stanchion & handrails
- 316 Stainless Steel mooring cleats & spring cleats
- 316 Stainless Steel opening portholes with screens
- All windows in tempered glass
- Heavy duty rubber w/S.S. rubrail
- Fore deck escape hatch

- Forward deck reclining sun lounge pad for three with Sunbrella\*\* covering
- Moulded drink holder

## Aft Deck

---

- Stainless steel frame sliding door to salon
- Stairs to flybridge feature teak laid steps
- Teak laid aft deck and swim platform
- Port and starboard boarding doors\*\*
- Aft deck seating with cushion and storage
- Mooring line lockers
- Aft deck wash down (fresh water)
- Cockpit LED lighting
- Waterproof stereo speakers
- Twin transom doors to swim platform Glendinning Cablemaster · Glendinning Cablemaster
- Transom shower (hot & cold)
- Concealed S.S. swim ladder
- Hydraulic driven stern port door\*\*
- Hydraulic lift swim platform\*\*

## Engine Room

---

- High volume ventilation system
- Racor fuel & water filtration system
- Lead & foam filled engine room sound insulation barrier
- Engine room DC and vaporproof AC lighting
- Watertight engine room bulkheads

- Aluminum fuel tank
- High capacity electrical bilge pumps
- Engine room fire suppression system with automatic engine shut down
- Dripless propeller shaft seals
- Bronze struts
- Stainless steel rudders
- Electronic engine controls
- Non-skid flooring
- Color coded plumbing system
- Wash down faucet
- GFI outlets

## Electrical

---

- Color coded wiring systems
- Bonding system w/zinc plates
- DC 12V system
- 12V for navigating and radio circuits
- 1 × 100 A.H. Battery for generator starting and charged by gen set or battery charger
- 1 × 25amp battery charger for battery bank
- DC 24V system
- 2 × 200 A.H. Heavy duty batteries for engine starting and charged by engine or battery charger
- 2 × 200 A.H. Heavy duty batteries for domestic service and charged by engine or battery charger
- 1 × 100 A.H. Battery for windlass & bow thruster
- 1 × 80 amp 24V battery charger
- DC lighting throughout

- AC 120V system (240V available)
- Shore power supply
- Generator/shore support change over switches
- Polarity check system
- AC sockets throughout
- Earth leakage safety trip
- AC insert tube lights
- Spare circuit breakers
- 5 Seavision LED Underwater Lights\*\*

---

## Notes

Note: Optional upgrades custom ordered are installed on this specific vessel and are denoted by stars "\*\*\*".

---

## Disclaimer

The Company offers the details of this vessel in good faith but cannot guarantee or warrant the accuracy of this information nor warrant the condition of the vessel. A buyer should instruct his agents, or his surveyors, to investigate such details as the buyer desires validated. This vessel is offered subject to prior sale, price change, or withdrawal without notice.

---

## Exclusions

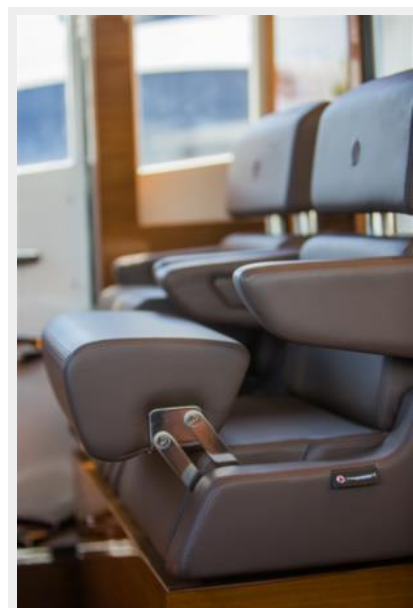
Owner's personal belongings.

---

## Disclaimer

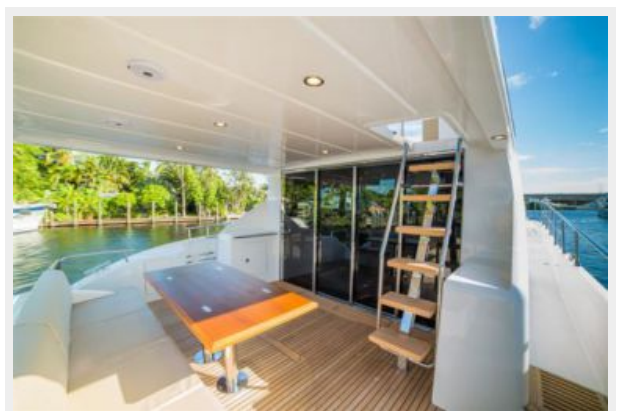
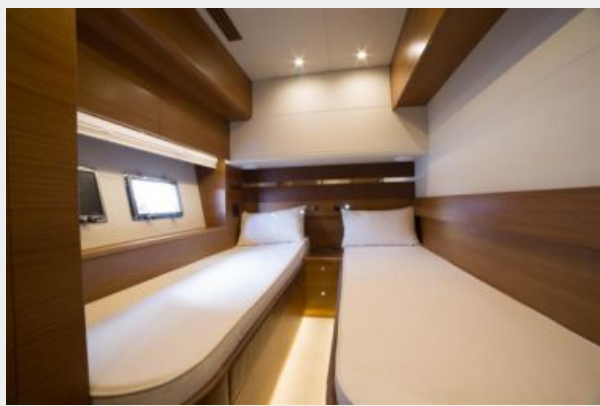
The Company offers the details of this vessel or yacht in good faith but cannot guarantee or warrant the accuracy of this information nor warrant the condition of the vessel. A buyer should instruct his representatives, agents, or his surveyors, to investigate such details as the buyer desires validated. This vessel or yacht is offered subject to prior sale, price change, or withdrawal without notice.

# PHOTOS

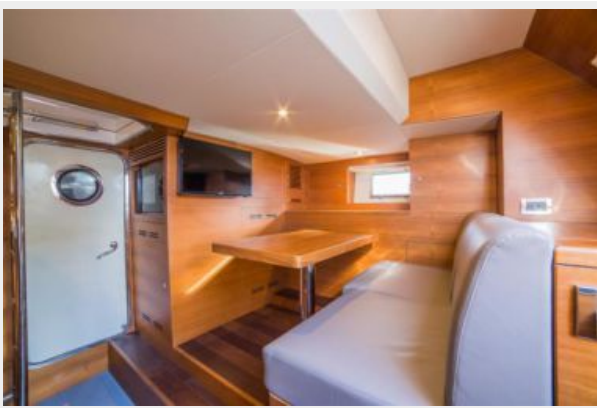














# CONTACTS

---

Andrey Shestakov, leading yacht broker of the sales department of Shestakov Yacht Sales Inc. Shestakov Yacht Sales Inc., the official representative of the Miami/Fort Lauderdale FL headquarters.

## Contact details

---

Email: [andrey@shestakovyachtsales.com](mailto:andrey@shestakovyachtsales.com)

Web: [shestakovyachtsales.com/en/](http://shestakovyachtsales.com/en/)

## Telephones

---

USA: +1(954)274-4435

## Office hours

---

Monday – Saturday: **9:00 - 21:00** EDT

Sunday: **closed**

## Address

---



Harbour Towne Marina, 850 NE 3rd St,  
STE 213, Dania, FL 33004