

CARO — KNIERIM YACHTBAU



Судостроитель: [Knierim Yachtbau](#)

Год постройки: 2013

Модель: Cruising/Racing Sailboat

Цена: ЦЕНА ЯХТЫ ПО ЗАПРОСУ

Местонахождение: France

Длина общая: 65' 0" (19.81m)

Ширина: 17' 1" (5.21m)

Мин. осадка: 15' 7" (4.75m)

Купить **CARO** — Knierim Yachtbau а также выбрать подходящую вам яхту из нашего каталога яхт вам поможет опытный яхтенный брокер Андрей Шестаков. На сегодняшний день компания Shestakov Yacht Sales Inc. имеет большое количество яхт в собственном списке продаж, а также тесно сотрудничает со всеми крупными яхтенными производителями по всему миру.

Для того чтобы купить яхту **CARO** — Knierim Yachtbau а также проконсультироваться по любому вопросу связанному с покупкой, продажей, чартером яхт позвоните по телефону **+7(918)465-66-44**.

ОГЛАВЛЕНИЕ

ОГЛАВЛЕНИЕ	2
ХАРАКТЕРИСТИКИ	4
Обзор	4
Основная информация	4
Размеры	4
Скорость, вместимость и масса	4
Размещение	4
Корпус и палуба	4
Информация о двигателе	5
ПОДРОБНОЕ ОПИСАНИЕ	6
Broker's Comments	6
Construction	6
Machinery	7
Electrical Systems	7
Plumbing Systems	8
Tankage	8
Navigation Equipment	8
Domestic Equipment	9
Accommodation	10
Deck Equipment	11
Исключения	12
Отказ от ответственности	12
ФОТОГРАФИИ	13
КОНТАКТЫ	19
Контактная информация	19
Телефоны	19
Время работы	19
Адрес	19

ХАРАКТЕРИСТИКИ

Обзор

Stunning Racer Cruiser from the board of Botin. Extremely fast and comfortable, with a chic interior and very competitive inshore and offshore.

Основная информация

Тип судна: Cruising/Racing Sailboat

Подкатегория: Гоночная яхта

Модельный год: 2013

Год постройки: 2013

Страна: France

Размеры

Длина общая: 65' 0" (19.81m)

Ширина: 17' 1" (5.21m)

Мин. осадка: 15' 7" (4.75m)

Скорость, вместимость и масса

Водоизмещение: 38338.3873618 Pounds **Вместимость воды:** 79.2516156 Gallons

Объем топливного бака: 150.57806964
Gallons

Размещение

Всего кают: 3

Всего коек: 10

Корпус и палуба

Материал корпуса: Composite

Дизайнер корпуса: Botin Partners

Информация о двигателе

Двигатели: 1

Производитель: Volvo Penta

Модель: D3

Тип двигателя: Inboard

Тип топлива: Diesel

ПОДРОБНОЕ ОПИСАНИЕ

Broker's Comments

CARO is a perfectly formed fast and fun yacht. Competitive, comfortable, can sail shorthanded or fully crewed and has a lifting keel for ease of use. She has high stability but low weight and is the perfect toy for the accomplished sailor. Meticulously maintained from the build, she is wanting for nothing. Will work equally well inshore and offshore racing. Put the furling boom on and then go daysailing, or bluewater cruising. She has the equipment for both

Construction

Hull, Deck & Superstructure Construction:

- Caro is constructed by the finest craftsmen at Knierim Yachtbau in Germany to exacting standards. The Craftsmanship is prevalent throughout the yacht and attention to detail is exquisite.
- To minimize weight, the yacht was constructed from Prepreg Carbon Fibre with a Nomex honeycomb sandwich. The Hull sections and underwater body have been crafted using a foam core for higher impact resistance and longevity.
- The yacht is very safe and stiff to sail, with a high righting moment through her high form stability and also deep draft keel.
- The Deck is laid teak with very little wear. Caulking in a silver grey very similar to the topsides.
- Topsides painted in 2015 in Anniversary Silver by Alexseal and underwater Nautix T4 antifoul sprayed on for a racing finish.

Keel & Rudder:

- Caro has a lifting keel hydraulically controlled at the chart table and with a manual override. Lifting from a max draft of 4.8 m to give superb sailing performance to 3m which will give access to most ports.
- Her twin ridders are linked directly with a Volvo 70 / 65 style track arrangement giving a very direct feel to the leeward rudder. The relative rudder angle is adjustable for inshore or offshore racing and provides a huge amount of control.

Machinery

Engine & Gearboxes:

- The main engine is a Volvo D3 – 110 Hp engine which was replaced in 2015 with only 220 hours (correct at December 2015). Controlled through a shaft drive with a 3 bladed Gori prop. The engine controls are based at the starboard wheel, within easy reach of the helmsman but tucked away from running rigging.

Maintenance & Performance:

- Fully serviced in October 2015.

Propulsion & Steering:

- Control is managed through the twin Carbon Wheels directly connected to the twin rudders for ultimate control. In tight spaces she has both bow and stern thrusters, both of which are fully retractable and tightly fitted against the hull when retracted with minimal effect on the yachts performance. Both are controlled by joystick from the helm position.

Electrical Systems

Battery Banks:

- There is a battery bank of 3 x Lithium Mastervolt MLI Ultra 24/5000 Batteries with upgraded software through the Mastervolt Charger. These batteries are specifically designed for heavy loads for long periods and short charging cycles. On average they last up to 3 times longer than standard batteries.

Battery Chargers:

- Mastervolt Combi Inverter / Charger with updated software.

Alternators:

- 2 x Mastervolt Alternator on Generator and 1 x on main engine.

Generator:

- Volvo D2 – 40 Generator.

Shore Power:

- 16A Shore power.

Plumbing Systems

Watermaker:

- Scheneker Watermaker - Modular 60 Analogic.
- 60 litres per hour.

Bilge Pumps:

- Roving bilge pump under port side saloon floor, in addition to Cat 1 requirements.

Tankage

Fuel:

- 150 litre + 120 litre + 100 litre Day tank. Also 200 litre separate bladder for offshore.

Fresh water:

- 2 x 100 litre tanks + 2 x 100 litre Bladder.

Navigation Equipment

In cockpit:

- 2015 B&G Chart plotter mounted on aft end of Mainsheet pedestal in centre of the cockpit.
- 1 x 10:10 underneath companionway entrance.
- B&G H3000 Multi display on Port Wheel pedestal.

- B&G H3000 Autopilot head unit on Starboard Wheel Pedestal.

At chart table:

- B&G H3000 Multi repeater.
- Akai Screen chartplotter repeater with Simrad controls to repeat with B&G Chartplotter in cockpit.

Communications Equipment:

- Thrane and Thrane Satcom at Chart Table.
- Simrad VHF with DSC.

Domestic Equipment

Galley:

- Fully fitted galley with Cocobolo hardwood veneer to give a functional yet stylish preparation area.
- Gas Oven with twin Gas burner.
- Double sink with single hot and cold mixer tap.
- LED downlighting.
- Top loading fridge freezer.
- Carbon Clearcoat kitchen counter top.

Heads/Showers:

- One heads forward of mast and another forward in the master cabin.
- One shower opposite Heads compartment and another integral in the Master cabin with the head.

Entertainment:

- Versatile Fusion entertainment with Bose speakers in main cabin and waterproof speakers in cockpit.

Lighting:

- Led lighting at chart-table interchangeable with white and red.
- Downlighting in galley area and side lighting in cabin and main saloon.
- All downlighting interchangeable white and red, at the tap of a button.

Accommodation

Description of layout from forwards:

- Head and shower compartment in white painted finish. Carbon Vacu flush toilet and matching Carbon vanity space with integral sink and Cocobolo veneer finish. Mirrored vanity unit with additional storage below and to the side
- Master Cabin with two wide single berths and hanging locker finished in Cocobolo veneer.
- LED underbunk lighting and hatch to foredeck with removable custom made carbon ladder.
- Mid grey upholstery throughout.
- Side window to topsides on both side of the yacht and integrated carbon hull side shelving.
- Heads on port side and shower opposite on starboard side
- Main Saloon Area with L Shape seating on Starboard Side and linear bench on Port side.
- Housing for the lifting keel on Centreline.
- Removable table on Starboard side.
- Chart Table to Port and Galley to Starboard.
- Mirror image aft bunk cabins open plan to saloon. Locker on Port side with shelving, could easily be turned into a hanging locker. Easy access to wiring via zip panels at back of locker.
- Starboard side cabin has locker containing electrical equipment sealed in waterproof case and Mastervolt Charging unit.
- Engine room on centerline between cabins housing Generator, Main Engine, hydraulic manifolds and all other systems. Easy access with a lot of space for access. Forward end removes under companionway steps for easy access to main engine. Deck hatch gives excellent

access to the top of the engine.

- Watertight compartment housing Watermaker, Lifting Stern Thruster housing, steering tracks, quadrants, autopilot arm onto starboard rudder. Allotted space for additional storage boxes for offshore sailing.

Deck Equipment

- Cariboni Mainsheet ram currently removed from yacht but is a simple operation to reattach for cruising. Controls are on the helm pedestal.
- Cariboni Rams for jibsheet leads. Up / down adjustment is independent and in / out is controlled by one ram
- Spinlock Halyard Clutches are on the coachroof and the simple setup for the winches works well for shorthanded operation.

Rig:

- Hall Spars White Painted Triple Spreader Carbon rig.
- Carbon EC6 rigging currently (Dec 2015) being serviced and fully checked over and re-covered by Future Fibres.
- One Spare backstay.
- Carbon Hall spar racing boom.
- Romar furling boom in aluminium.

Winches:

- 2 x Harken 65.3 Three speed self-tailing backstay manual winches.
- 1 x Harken 990 Self tailing Mainsheet winch on custom pedestal fitted in refit 2015. Operable on Helm pedestal.
- 2 x Outboard Primary Harken 990 Self tailing winches operable with stored power, with 3 speeds. Operable on Helm Pedestal.
- 2 x Harken 990 Halyard / utility winches operable with buttons on companionway side.

Sails:

- Full Wardrobe from Doyle Sails. Please enquire for full inventory.

General:

- One 20 ft Container for Cradle and associated spares
- 1 x 40ft Working container with shelving, boxed storage and office.
- Workbench with vice and electricity and outlets.

Anchoring & Mooring Equipment:

- *Custom Anchor arm extends on Stainless pivot from vast anchor locker to ensure no damage to the hull from lifting the anchor.*
- *Anchor Chain and warp.*

Safety Equipment:

- All safety equipment for Cat 1.
- 12 x Spinlock Lifejackets.
- 2 x 8 Man liferafts with Carbon Covers.

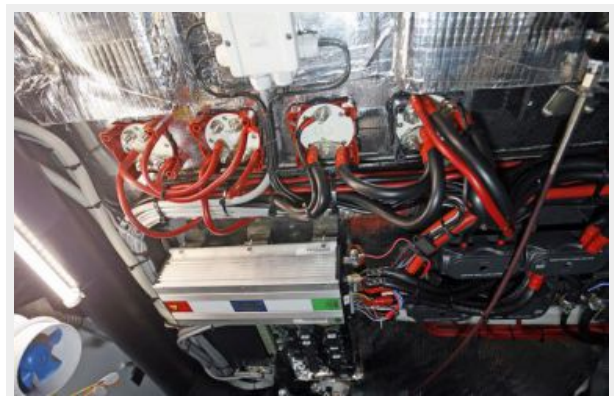
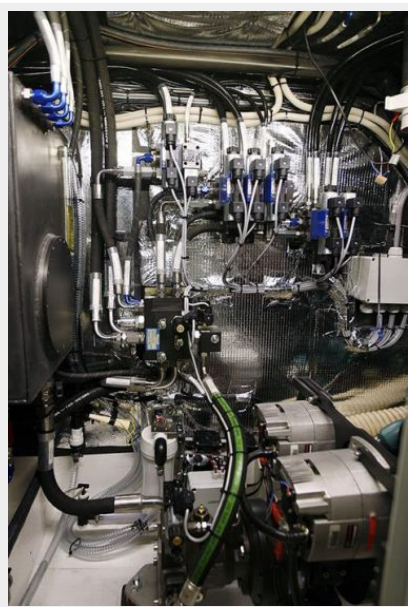
Исключения

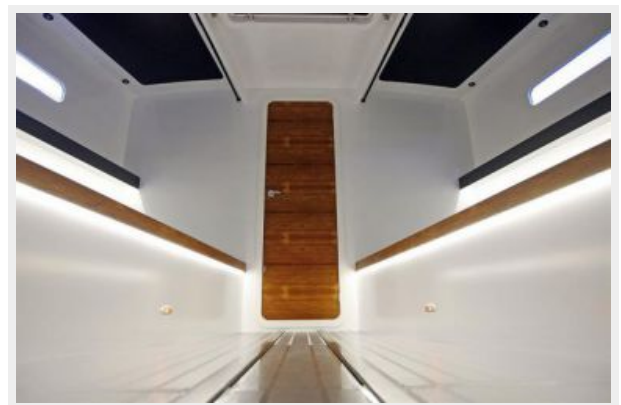
При продаже яхты исключаются личные вещи владельца.

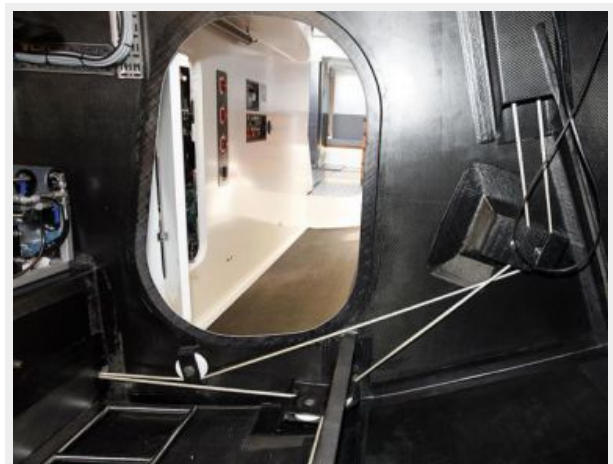
Отказ от ответственности

Компания предоставляет описание судна или яхты добросовестно, но не может гарантировать точность этой информации, а также не ручается за техническое состояние. Покупатель должен проинструктировать своих агентов или оценщиков исследовать представленную информацию более подробно, по собственному желанию. Продажа судна или яхты, изменение цены или снятие с продажи будет происходить без предварительного уведомления.

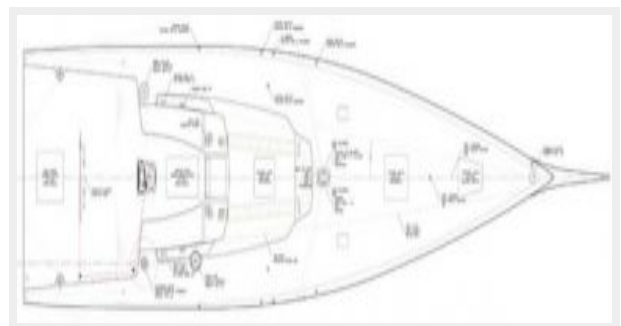
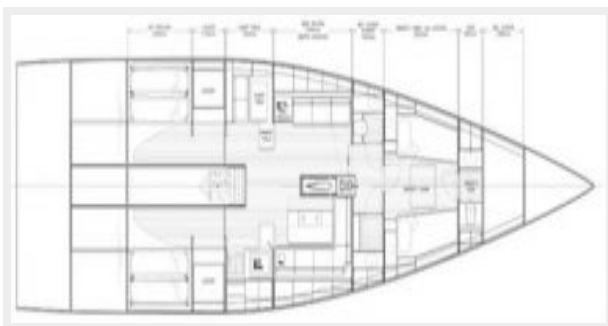
ФОТОГРАФИИ

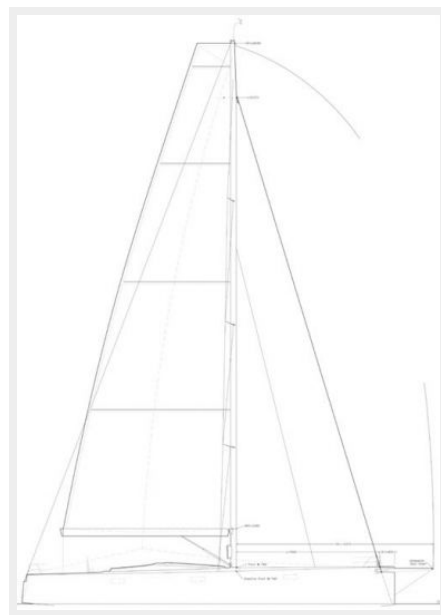
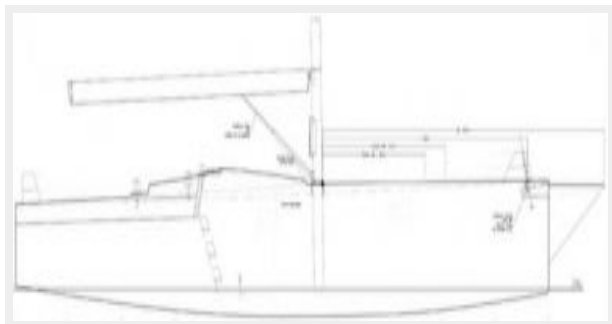












КОНТАКТЫ

Андрей Шестаков (Andrey Shestakov) – ведущий яхтенный брокер отдела продаж яхт и судов компании Shestakov Yacht Sales Inc. Официальный представитель Shestakov Yacht Sales Inc. для русскоговорящих клиентов в центральном офисе компании в Майами/Форт Лодердейл/Флорида/США.

Контактная информация

Email: andrey@shestakovyachtsales.com

Web: shestakovyachtsales.com

Телефоны

Краснодарский край: **+7(918)465-66-44**

США, Майами, Флорида: **+1(954)274-4435**

Время работы

Понедельник – Суббота: **9:00 - 21:00**
EDT

Воскресенье: **Закрито**

Адрес



Harbour Towne Marina, 850 NE 3rd St,
STE 213, Dania, FL 33004