

BLUE MOON II — HATTERAS



Builder: HATTERAS

Year Built: 2007

Model: Motor Yacht

Price: PRICE ON APPLICATION

Location: United States

LOA: 80' 0" (24.38m)

Beam: 21' 3" (6.48m)

Min Draft: 5' 8" (1.73m)

Cruise Speed: 21 Kts. (24 MPH)

Max Speed: 25 Kts. (29 MPH)

Our experienced yacht broker, Andrey Shestakov, will help you choose and buy a yacht that best suits your needs **BLUE MOON II — HATTERAS** from our catalogue. Presently, at Shestakov Yacht Sales Inc., we have a wide variety of yachts available on our sale's list. We also work in close contact with all the big yacht manufacturers from all over the world.

If you would like to buy a yacht **BLUE MOON II — HATTERAS** or would like help answering any questions concerning purchasing, selling or chartering a yacht, please call **+1(954)274-4435**

TABLE OF CONTENTS

TABLE OF CONTENTS	2
SPECIFICATIONS	5
Overview	5
Basic Information	5
Dimensions	5
Speed, Capacities and Weight	5
Accommodations	5
Hull and Deck Information	6
Engine Information	6
DETAILED INFORMATION	7
80' Hatteras Motor Yacht BLUE MOON II	7
80' Hatteras Motor Yacht BLUE MOON II	7
Salon	8
Dining Area	8
Day Head	9
Galley	9
Sport Deck/Aft Deck	10
Lower Forward Companionway	10
Master Stateroom	11
Master "His and Hers" Head	12
VIP Guest Stateroom	12
VIP Head	13
Bow Guest Stateroom	13
Bow Head	14
Starboard Guest Stateroom	14
Starboard Head	15
Sky Lounge	15
Boat Deck	16

Electronics, Navigational and Helm Equipment	16
Crew Quarters	17
Miscellaneous	17
Electrical	18
Engine Compartment	19
Broker's Comments	20
Exclusions	21
Disclaimer	21
PHOTOS	22
Aft Deck	22
Upper Aft Deck	22
Salon	22
Salon	22
Dining	22
Dining	22
Galley	23
Galley	23
Dinette	23
Skylounge	23
Skylounge	23
Pilothouse	23
Pilothouse	24
Pilothouse Controls	24
Master Stateroom	24
Master Stateroom	24
Master Stateroom	24
Master Bath	24
Master Bath	25
Master Bath	25

VIP Bath	25
Guest VIP Stateroom	25
Guest Bath	26
Guest Bow Stateroom	26
Guest Bath	26
Guest	26
Day Head	27
Engine Room	27
Aft	27
Forward	27
Layout	28
CONTACTS	29
Contact details	29
Telephones	29
Office hours	29
Address	29

SPECIFICATIONS

Overview

ESTATE SALE

Basic Information

Category: Motor Yacht	Model Year: 2007
Year Built: 2007	Country: United States
Vessel Top: Enclosed Pilothouse	

Dimensions

LOA: 80' 0" (24.38m)	Beam: 21' 3" (6.48m)
Min Draft: 5' 8" (1.73m)	

Speed, Capacities and Weight

Cruise Speed: 21 Kts. (24 MPH)	Max Speed: 25 Kts. (29 MPH)
Water Capacity: 252 Gallons	Holding Tank: 388 Gallons
Fuel Capacity: 2858 Gallons	

Accommodations

Total Cabins: 4	Sleeps: 8
Total Heads: 5	Crew Cabin: 2
Crew Berths: 5	

Hull and Deck Information

Hull Material: Fiberglass

Hull Configuration: Modified V-Hull

Exterior Designer: Hatteras

Engine Information

Engines: 2

Manufacturer: Caterpillar

Model: C32

Engine Type: Inboard

Fuel Type: Diesel

DETAILED INFORMATION

80' Hatteras Motor Yacht BLUE MOON II

ESTATE SALE

80' Hatteras Motor Yacht BLUE MOON II

BLUE MOON II is an 80' Hatteras motor yacht built in 2007 with twin Caterpillar C32 engines that have just received their 2000-hour service. The 80' motor yacht boasts a full 21'3" beam. The Salon and Master Stateroom take full advantage of this space. She only draws 5'8" which gives access to the shallow waters of the Bahamas and beyond. BLUE MOON II is capable of a top speed of 25+ knots, with a cruising speed of 21 knots. Her solid fiberglass bottom, PVC foam-cored hull sides and decks, and Hatteras's famed construction methods ensure long term trouble free cruising. She is painted from stem to stern in Alexseal. This is a large yacht with over 190,000+ lbs of displacement. She's stabilized and ready to move your family and friends in comfort in most offshore sea conditions. BLUE MOON II is boarded from port or starboard onto the teak aft deck. The custom deck table has ebony inlays. A large C-shaped lounge with Sunbrella cushions and three teak chairs allow for seven people to enjoy al fresco dining around the beautiful, high gloss teak table. An LCD TV is concealed in the starboard forward hardtop and is easily viewable. Stainless steel gates are located port and starboard to separate the aft deck from the steps to the swim platform. BLUE MOON II's electrically actuated curved stainless steel sliding door opens to the full beam salon with a custom bar to starboard and seating to port. Forward of the bar, the 50" popup TV is easily view-able from the bar seats and portside sofa and chair. Forward of the salon is a six place, oval dining table with custom inlays. High gloss cherry and huge windows surround the area and offset the glass front cabinetry. A day head is forward to starboard. BLUE MOON II offers a very spacious galley and informal dinette forward on the main level. A granite topped island contains loads of storage and provides an excellent prep area. It lies between the full sized side-by-side Sub-Zero refrigerator/freezer and the double sink with disposal. On the aft side of the galley is the stove with undercounter oven and a microwave above. A pantry is forward, beside one of the two pantograph doors leading to the side decks and foredeck. Aft of the pantry, stairs lead to the helm/sky lounge. BLUE MOON II's enclosed bridge has a full bevy of navigational electronics at the helm. Aft of the helm are port and starboard lounges, full wet bar with a pop-up flat screen LCD TV, refrigerator, ice maker and ample cabinetry for bottles and barware. Aft of the enclosed Sky Lounge is the exterior sun lounge with built-in seating and a cocktail table. Also located on the flybridge aft deck, is a double Gaggenau BBQ grill encased in a fiberglass cabinet. The dinghy storage, davit, and external stairs to the lower aft deck are aft of the seating area. BLUE MOON II's accommodations are accessed from a spacious companionway, which boasts a breakfast bar with refrigeration, and a stacked washer/dryer. Aft is the full beam Master Stateroom with six large windows and "his and hers" heads with a common marble shower. Twelve-drawer dressers on either side of the stateroom are finished in high gloss cherry. Cedar lined closets provide plenty of hanging space. Forward

through the companionway are three additional staterooms, two with queen sized berths and one with twin single bunks. All have en suite heads. BLUE MOON II's Crew Quarters are accessed either from a door on the aft deck or from the center door located on the swim platform. There are two cabins: the Captain's cabin has a walk around double berth with a single berth above on the starboard side. The Crew Cabin has a Pullman upper berth over lower single berth. These two cabins provide accommodations for up to five crew members. The crew head with stall shower, a second stacked washer/dryer unit, additional freezer space, and access to the Engine Room are all found in this area.

Salon

- Full-width 21'3" beam
- Finished wood bulkheads with high gloss finish in cherry
- Emperador Dark Marble stonework
- Carpeting
- Whisperwall headliner
- Decorative wood accents over the salon and dining area
- Custom designed decorative wood valance with Silhouette blinds in recessed pockets
- Polished curved stainless steel sliding door to aft deck
- Recessed wet bar with bottle and glass storage, with three barrel chairs UPGRADE
- Plexiglass bottle and glass storage in side cabinets and bar storage
- Entertainment center including 50" plasma TV on lift with DVD/CD player and one touch RF remote control system, Blu-ray player and DVR
- Carbon monoxide detector
- Scotsman ice maker and refrigerator
- Fixed frameless windows with tinted safety glass
- Telephone outlet
- AC and DC light fixtures
- AC dimmable lights
- AC duplex outlets
- Custom sofa with storage
- Club chair
- Throw pillows
- Air conditioning dispersed through decorative valances, port and starboard
- Three chairs surrounding the sunken bar – UPGRADE
- AJ Originals coffee table – UPGRADE
- AJ originals custom end table with storage and lamp – UPGRADE

Dining Area

- AJ originals custom dining table and six custom dining chairs UPGRADE
- U-line wine cooler – UPGRADE – forward cabinet

- Carpet
- High gloss cherry wood
- Buffet cabinets on port and starboard of dining area
- Artwork display area between cabinets
- Dimmable Halogen lighting
- Whisperwall ceiling panels with decorative reveals
- Cherry columns separating the salon from the dining area
- Custom china storage

Day Head

- Pepeete Blue marble counter and backsplash – UPGRADE
- Custom wall covering – UPGRADE
- Plexi mirror overhead – UPGRADE
- Towel bar
- Headhunter freshwater toilet
- High end faucet – UPGRADE
- Recirculating fan
- AC and DC light fixtures
- AC duplex outlets
- Air conditioning vent

Galley

- Finished wood bulkheads with highgloss finish in cherry
- Tropic Brown granite counter tops and backsplash
- Whisperwall headliner
- Fixed frameless windows with tinted safety glass, window tinting
- Amtico floor – teak with 1/4" black walnut
- Sub-Zero upright AC refrigerator with freezer and icemaker, UPGRADE water and icemaker in door front
- AC 4-burner ceramic cooktop
- Oven located under counter
- Microwave/convection oven hidden by matching cherry cabinetry door
- 1/2 HP continuous feed garbage disposal
- Telephone outlet
- AC and DC light fixtures
- AC dimmable lights
- AC duplex outlets
- Jurassic Green granite dinette table top
- Storage under dinette and storage forward of dinette
- Dishwasher

- Wood inserts on appliance fascia (except refrigerator) to match interior wood finish
- SMX HVAC Compartment Controls
- Port and starboard pantograph doors
- Duette blinds on forward windows
- LCD TV
- Storage pantry

Sport Deck/Aft Deck

SPORT DECK

- Molded fiberglass with non skid sole
- Freshwater wash down outlet with hose connection and Hatteras patented quick disconnect
- Welded and polished 316L removable stainless steel hoop rails
- Hand held hot/cold cockpit shower with cover
- Molded-in fiberglass steps with DC lights to aft deck
- 2 pop-up cleats
- Reboarding ladder, centerline, swim platform
- Weather tight Pacific Coast door to crew quarters and engine room
- Swim platform and steps to aft deck
- Steps to aft deck done with teak treads – UPGRADE

AFT DECK

- AC duplex outlet
- Dual molded fiberglass steps, port and starboard, to swim platform with lights and teak treads – UPGRADE
- Molded fiberglass with teak treads to flybridge UPGRADE
- Curved polished stainless steel sliding door to salon
- Audio system control, LCD keypad and a pair of marine waterproof loudspeakers
- Molded lounge with Sunbrella – covered polyfoam cushions and storage underneath, with cover – UPGRADE
- High gloss teak accent rail around aft deck seating – UPGRADE
- Door with stairwell to crew quarters/engine room
- Custom AJ originals, oversized aft deck high gloss teak table with cover and custom inlay – UPGRADE
- 3 High gloss teak chairs with cushions
- Custom stainless steel gates with water jetted “B” – UPGRADE
- Flip down TV in forward, starboard ceiling
- Teak sole

Lower Forward Companionway

- Carpet
- Coffee/wine bar with Emperador Light marble counter and refrigerator behind door
UPGRADE
- Whisperwall headliner
- Padded panel wallcovering
- Portable fire extinguisher
- Washer/dryer hidden behind door
- DC light fixtures
- Lights at top and bottom of stairs
- Lighted stairway to lower deck
- Arched passage doors with door stops to master and guest staterooms
- Custom storage alcove within stairwell

Master Stateroom

- Full-width 21'3" beam
- Whisperwall padded panel bulkheads
- Cherry wood bulkheads with high gloss finish
- Carpeting
- Whisperwall headliner
- Upholstered berth base
- Decorative wood valance with fixed Roman shade and Duette blinds
- King sized berth with headboard and cedar lined storage underneath, accessed via pneumatic cylinders
- Whisperwall covered, curved wall section behind master berth with cherry wood, horizontal reveals
- HMC coil spring mattress, spread, throw pillows, pillows, pillow shams, mattress pad and sheets
- Port and starboard ventilating port lights with screens and four additional fixed portlights, for a total of six
- Bowed-front nightstands with drawers, plus a pull out shelf for writing
- Bowed-front built-in dressers, port and starboard, custom designed and raised for maximum storage capacity – UPGRADE
- AM/FM audio access with local DVD/CD changer and a one touch master universal remote with RF control
- Flush mounted speakers in ceiling
- Custom wall mounted light fixtures flanking the master berth
- AC and DC light fixtures
- AC dimmable lights
- AC duplex outlets
- Telephone outlet
- Arched sketch faced interior passageway door to "his and hers" head

- Arched sketch faced door, with door stop, to companionway
- Full-length mirror
- Smoke detector
- DC low level lights
- Safe
- Twin cedar lined wardrobes with arched passage doors and automatic lights
- SMX HVAC Compartment Controls
- Carbon monoxide detector
- LCD TV

Master "His and Hers" Head

- Custom Emperador Light marble countertops and backsplashes - UPGRADE
- Custom wallcoverings - UPGRADE
- Custom Emperador Light marble tiles with White Thassos Select marble accent keys UPGRADE
- Custom wall sections and shower seat made of the same stone - UPGRADE
- Plexi mirror overheads - UPGRADE
- High gloss cherry storage cabinets
- Mirrors
- Enlarged granite shower with frameless doors on either side
- Headhunter freshwater toilets
- Recirculating fans
- AC and DC light fixtures
- AC duplex outlets
- Air conditioning vents
- Holding tank $\frac{3}{4}$ full indicator light

VIP Guest Stateroom

- Padded bulkhead
- Carpeting
- Whisperwall headliner
- Fluted wood valance with fixed Roman shade and Duette blinds with air conditioning dispersed through soffits
- Upholstered berth base
- HMC coil spring mattress, spread, throw pillows, pillow shams, pillows, mattress pad and sheets
- Ventilating portlight with screen
- Cedar lined hanging locker with arched door and automatic light
- Nightstand with drawers
- Full-length mirror

- AC and DC light fixtures
- AC dimmable lights
- AC duplex outlets
- AM/FM audio access with local DVD/CD changer and a one touch master universal remote with RF control
- Telephone outlet
- Private access to head by arched door
- LCD TV nbsp;
- Smoke detector nbsp;
- Mirrored aft bulkhead – UPGRADE
- Boston Acoustics loudspeakers
- SMX HVAC Compartment Controls
- Carbon monoxide detector
- Private access to head
- Storage above portlight outboard and on aft bulkhead, in the form of blanket lockers

VIP Head

- Emperador Light marble tiles with Jurassic Green granite accent keys custom flooring UPGRADE
- Custom wallcovering – UPGRADE
- Plexi mirrored ceiling – UPGRADE
- Jurassic Green granite countertop, backsplash and side splash with under mount sink UPGRADE
- Shower with sliding door
- Towel bars
- Storage cabinet with mirror doors
- Cherry wood base cabinet with storage and bowed fronts
- Plexi mirror around upper cabinet
- Linen locker
- Headhunter freshwater toilet
- 120 volt AC air freshener blower
- AC and DC light fixtures
- Air conditioning vent
- DC low level lights under toe kick
- Holding tank $\frac{3}{4}$ full indicator light

Bow Guest Stateroom

- Whisperwall padded bulkheads
- Carpeting
- Whisperwall headliner

- Twin crisscross berths
- Upholstered berth base
- Cedar lined hanging locker with automatic light
- Full-length mirror
- Audio system control, LCD keypad and a pair of Boston Acoustics loudspeakers
- LCD TV
- AC and DC light fixtures
- AC dimmable lights
- AC duplex outlets
- Private access to head
- Smoke detector
- Carbon monoxide detector
- DC low level lights under berth
- Telephone outlet
- Dresser
- SMX HVAC Compartment Controls

Bow Head

- Emprador Dark marble tile with White Thassos Select keys flooring
- Custom wall covering
- Mirrored ceiling – UPGRADE
- Emperador Dark marble countertop, backsplash and side splash with under mount sink
- Tub with sliding door
- Towel bars
- Storage cabinetry with mirror doors
- Genuine wood base cabinet with storage and bowed fronts
- Plexi mirror around upper cabinet
- Linen locker
- Headhunter freshwater toilet
- 120 volt AC air freshener blower
- AC and DC light fixtures
- Air conditioning vent
- DC low level lights under toe kick
- Holding tank $\frac{3}{4}$ full indicator light

Starboard Guest Stateroom

- Whisperwall padded bulkheads
- Carpeting
- Whisperwall headliner
- Twin crisscross berths

- Upholstered berth base
- Cedar lined hanging locker with automatic light
- Full length mirror
- Audio system control, LCD keypad and a pair of Boston acoustics loudspeakers
- LCD TV
- AC and DC light fixtures
- AC dimmable lights
- AC duplex outlets
- Private access to head
- Smoke detector
- Carbon monoxide detector
- DC low level lights under berth
- Telephone outlet
- Dresser
- SMX HVAC Compartment Controls

Starboard Head

- White Thassos with Emperador Light keys flooring
- Custom wall covering
- Mirrored ceiling – UPGRADE
- Emperador Light marble counter top, back splash and side splash with under mount sink
- Shower with sliding door
- Towel bars
- Storage cabinetry with mirror doors
- Genuine wood base cabinet with storage and bowed fronts
- Plexi mirror around upper cabinet
- Linen locker
- Headhunter freshwater toilet
- 120 volt AC air freshener blower
- AC and DC light fixtures
- Air conditioning vent
- DC low level lights under toe kick
- Holding tank $\frac{3}{4}$ full indicator light

Sky Lounge

- Main helm
- Stidd helm and companion chairs with foot rests UPGRADE
- Solid teak with sawn walnut strip flooring – UPGRADE
- Larger table for port side lounge – UPGRADE
- Custom sofa for stbd side – Upgrade

- Wet bar with sink, refrigerator, ice maker and 3 bar stools
- Pop-up TV in aft corner of bar
- Stone counter at bar
- Stone table top at lounge
- Electrically actuated window at bar
- AC outlets
- Dimmable Halogen lighting
- Custom overhead grab bar
- Access to Galley and boat deck from Enclosed Flybridge/Sky Lounge

Boat Deck

- Large dingy area
- Custom hoop rails around dinghy area
- MarQuipt 1,500 lb davit
- 104 sq. ft. dinghy area
- Built in fiberglass cabinet with 2 Gaggenau electric grills
- Built in U-shaped lounge with table
- Deck lighting
- Custom electronics mast
- Ladder and hatch through sky lounge exterior overhang for easy top access
- Teak stairs to lower aft deck
- Fold out helm station in wing board with gears, throttles, thruster control and start/stop buttons

Electronics, Navigational and Helm Equipment

- Caterpillar Electronic Single Lever Controls
- ABT Trac Stabilizers
- ABT Bow Thruster
- ABT Stern Thruster
- 2 x ACR Searchlights
- KVH Tracphone
- SeaTel Sat TV (2012)
- KVH VSat (2013)
- Wave WiFi (2013)
- AIS (2012)
- Weather Works (2012)
- 2 x Furuno Navnet Monitors
- Furuno Charting
- Furuno BB Color Sounder
- Furuno 72 Mile Radar

- NVTi Thermal Camera Night Vision
- Simrad AP25 Autopilot
- 2 x ICOM ICM602 VHF Radios
- Ritchie Compass
- Simrad IS15 Depth/Speed
- Simrad IS15 Wind

Crew Quarters

- Carpeted cabins
- Full head with shower stall
- Amtico flooring in crew companionway
- Stacked washer/dryer
- 2 Refrigerators
- Freezer
- Engine Room access
- Aft Deck access
- Swim/Sport Deck access through Pacific Offshore door

Captain's cabin with walk around double berth and single berth above

- Nightstands
- Halogen lighting
- Cedar lined locker
- Storage

Crew Cabin

- Over/under bunks with Pullman upper that stores when not in use
- Halogen lighting
- Storage locker

Miscellaneous

- Finished wood bulkheads with high gloss polyester finish in genuine cherry
- All hardware chrome on brass or welded and polished stainless steel
- Swim platform with welded and polished stainless steel reboarding ladder – UPGRADE
- Welded and polished stainless steel anchor chute and roller
- 110 lb plow anchor, anchor line an deck hawse pipe
- Windlass, 4,000 lb hydraulic with 300 feet of stainless steel chain with deck mounted control switches
- Integrated hydraulic digital 35 hp thruster/stabilizer system with 7.5 square foot fins
- 6 polished stainless steel spring line cleats with chafing strips, through bolted in aluminum

backing plates

- Bow and stern polished stainless steel cleats, through bolted in aluminum backing plates
- Polished 1 ¼" stainless steel rails on bow, side deck and flybridge, drilled and tapped in aluminum backing plates
- 2 Remote controlled searchlights
- Fog bell
- Dual air horns
- Zincs on rudders and shafts
- Bow and stern staffs with pennant and ensign
- Black braided mooring lines
- Alloy 22 high strength propeller shafts with zincs
- Manganese bronze dripless shaft and rudder seals
- Life Jackets
- Life Ring
- 13 Portable fire extinguishers UL approved in compliance with United States Coast Guard and ABYC standards
- Stainless steel trim tabs
- Manganese bronze struts
- Stainless steel rudders
- 8-blade NIBRAL propellers
- Central vacuum with five outlets
- MarQuipt 1,500 lb, fully hydraulic davit
- Holding tank with sewage pump and overboard discharge
- Freshwater wash down on bow with Hatteras quick disconnect
- Black fenders
- 2 Pop-up cleats on swim platform
- Fender tracks
- Deck plates for fuel and water fills and waste pump out
- Heavy duty bronze engine couplings
- Engine and generator exhaust exits through hull sides near transom
- Generator exhaust separators
- Rope locker storage hatch on bow deck
- 1400 gpd Sea Recovery water maker
- Deep storage on port and stbd sides for bow storage
- Pacific Coast door to crew quarters from sport deck
- Wireless remote control for bow-mounted Cablemaster units
- Custom double radar mast

Electrical

- 20- and 30-gallon water heaters amidships; 6-gallon water heater aft for crew
- 2 x 24V banks of heavy duty 12V marine batteries, 4 per bank, mounted in fire retardant fiberglass boxes

- U.L. listed #1426 boat cable, tin coated with insulation
- Gel/lead acid compatible 240 volt automatic programmable battery charger, 50/60Hz
- Automatic battery paralleling system with switch at control console
- 2 x 100 amp transformer-connected, retractable shore cords, covered by hatch, forward, with wireless remote control for Cablemaster
- AC and DC light fixtures
- Battery control panels with fuses and isolation switches
- DC electronics panels with magnetic circuit breakers
- AC distribution panels with magnetic circuit breakers
- AC switching panel with source selector switches, digital volt meter, ammeter, frequency meter, generator start/stop controls, voltage boost tap switch and interlock selector breakers
- Computer controlled ethernet monitoring system with LCD touch screen display providing visual and audible signals for engines, gears, generators, high bilge water, fire warning in engine compartment, fire extinguisher discharge in engine compartment, AC power loss, smoke detectors, all tank level indications, low battery voltage, alternator failure, battery charger failure, bilge pump control and run indication, holding tank pump control and run indication, and carbon monoxide detectors. A history log is maintained for critical alarms and trends may be set up to view various parameters with respect of time. Additional monitoring points may be added to the system economically and easily.
- Navigational lights, U.L. certified to the United States Coast Guard and ABYC specifications
- Ground fault protection on AC receptacles and lighting circuits
- Chilled water air conditioning with reverse cycle heating, with soft starting AC compressors, automatically staged and individually controlled with SMX controls in each compartment
- SSB radio ground screen laminated in cabin top
- Telephone/CATV inlet, one each, forward
- Telephone and CATV shoreline cord, one each
- TV antenna, omnidirectional
- 2nd 100 amp retractable shore power cord – (UPGRADE)

Engine Compartment

- Twin Caterpillar C32 1650 hp main engines (Starboard Hours 2127, Port Hours 2136)
- Twin Onan 27.5 kW generators with full sound enclosures (Starboard Hours 2918, Port Hours 2910)
- Water manifold blocks with centralized shutoff valve for sinks and showers
- Pultruded fiberglass rudder shelf with stainless steel rudder tie bar
- AC fluorescent lights
- DC lights
- DC exhaust blowers
- AC ventilation blowers
- Variable speed air induction fans ducted from flybridge sides, capable of producing positive

engine room pressure for engine air supply

- FM200 fixed fire extinguishing system for engine/generator compartment with automatic and remote manual controls plus audible and visual discharge signals
- Polyethylene water lines
- Electric fuel transfer system with filtration and dry tank protection for pump (2)
- Fresh water fill hose for engines and generator
- AC compressed air system with air line and regulator
- Dockside water inlets with pressure regulating valve, automatic dockside tank fill and Hatteras patented quick disconnect
- 24V DC bilge and sump pumps, six @ 3700 gph, one @ 2200 gph with heavy duty float switches and protective guards
- Bronze/chrome ball valves thru-bolted in solid fiberglass on all underwater thru-hull fittings with electrical bonding throughout
- 230 volt AC freshwater pump, with pressure tanks located in strategic areas and central charcoal filter with back flush capabilities
- U.L. Marine listed fiberglass fuel tanks constructed with fire retardant resin and bronze fittings, and coated with fire retardant paint
- Fiberglass water tanks, constructed with bronze fittings and materials which comply with the requirements of Title 21 for food and drug
- Sewage holding tank with 230 volt AC sewage pump, plumbed for dockside pump out with $\frac{3}{4}$ full display and alarm as part of system monitor
- 110 volt AC oil changing system for engines, generators and gears with Hatteras patented quick disconnect
- U.L. Marine listed fuel filter/water separator, generators
- Sealed shower sump, two each
- U.L. Marine listed duplex fuel filters/water separators with bypass manifold, engines
- Electric fuel priming pumps, 24 volt DC, engines
- Welded and polished 316L stainless steel overhead grab rails
- AC distribution panels
- DC distribution panels
- Painted polyurethane engine room and bilges
- United States Coast Guard Marine listed fuel lines
- Discharge sea chests, stainless steel steering tie bar with pivoting self aligning ball joint connection at all cylinder and tie bar connections
- Insulation in deck
- Gray water tanks, (2) plumbed, 126 gallons each, with 230 volt AV sewage pump, plumbed for dockside pump out with $\frac{3}{4}$ full display and alarm as part of systems monitor
- Air conditioning compressors, chilled water, (2) four ton units
- 2 x 100 amp transformer connected, retractable shore power cords

Broker's Comments

ESTATE SALE executor wants BLUE MOON II to be the next Hatteras 80' Skylounge to be sold!

BLUE MOON II is one of the few, popular "Skylounge" version 80' Hatteras Motor Yachts currently available. She is impeccably maintained and is an exceptional yacht; with her 21'3" beam she offers the space of a much larger yacht. Her spacious layout features a fully-enclosed bridge, four staterooms including a full-beam master stateroom with king bed, and three additional luxurious staterooms, all with full heads. She has a vast full beam salon with beautiful furnishings, formal dining area, and country kitchen galley. A "MUST SEE" for your most discriminating buyer.

Exclusions

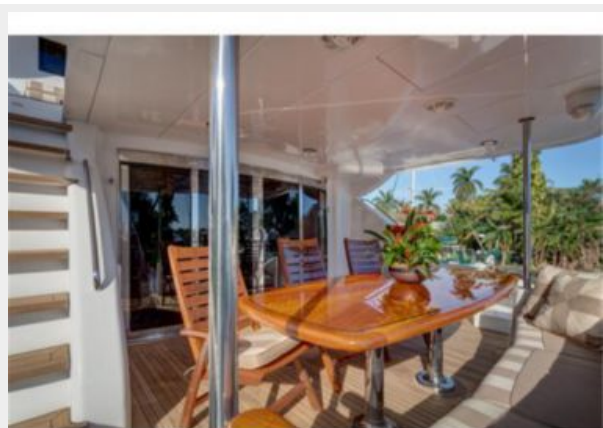
Owner's personal belongings.

Disclaimer

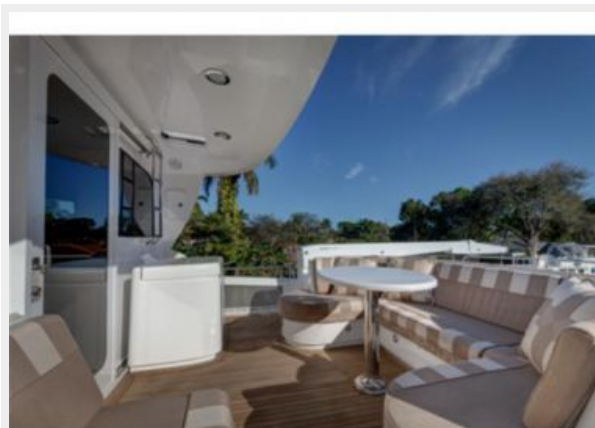
The Company offers the details of this vessel or yacht in good faith but cannot guarantee or warrant the accuracy of this information nor warrant the condition of the vessel. A buyer should instruct his representatives, agents, or his surveyors, to investigate such details as the buyer desires validated. This vessel or yacht is offered subject to prior sale, price change, or withdrawal without notice.

PHOTOS

Aft Deck



Upper Aft Deck



Salon



Salon



Dining



Dining



Galley



Galley



Dinette



Skylounge



Skylounge



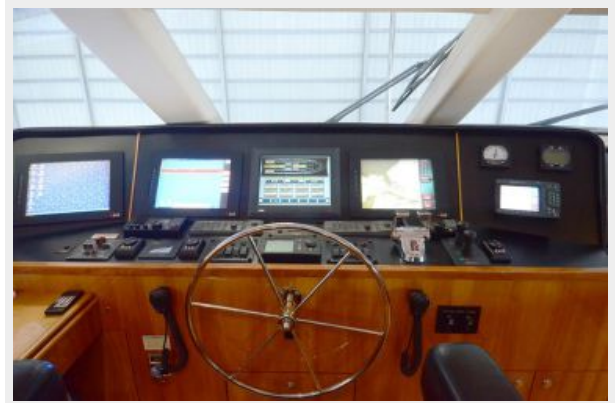
Pilothouse



Pilothouse



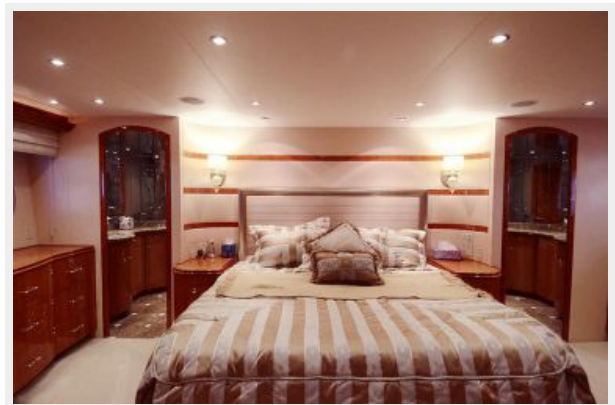
Pilothouse Controls



Master Stateroom



Master Stateroom



Master Stateroom



Master Bath



Master Bath



Master Bath



VIP Bath



Guest VIP Stateroom



Guest Bow Stateroom



Guest Bath



Guest Bath

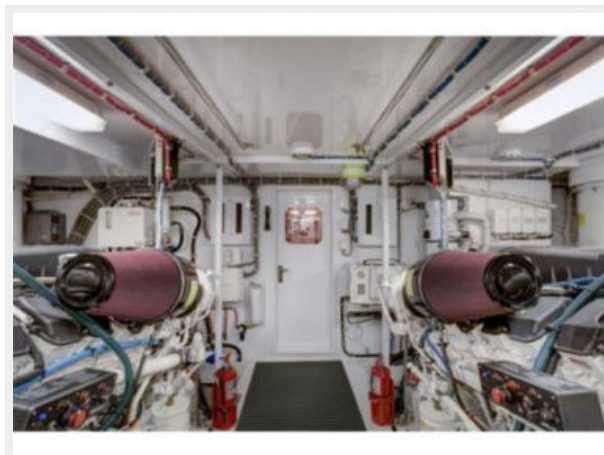
Guest



Day Head



Engine Room



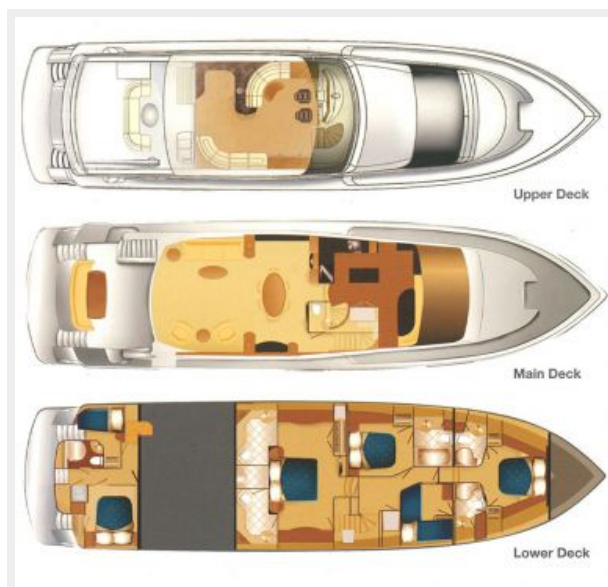
Aft



Forward



Layout



CONTACTS

Andrey Shestakov, leading yacht broker of the sales department of Shestakov Yacht Sales Inc. Shestakov Yacht Sales Inc., the official representative of the Miami/Fort Lauderdale FL headquarters.

Contact details

Email: **andrey@shestakovyachtsales.com**

Web: shestakovyachtsales.com/en/

Telephones

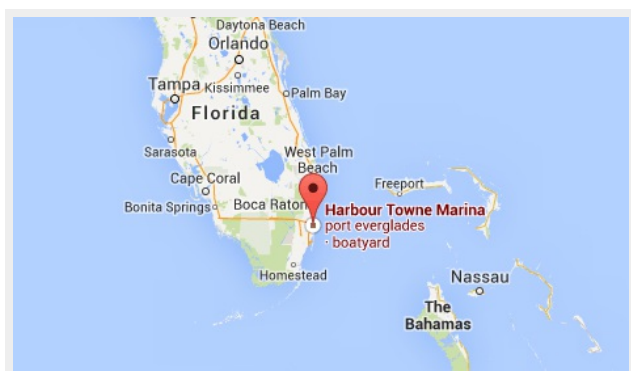
USA: **+1(954)274-4435**

Office hours

Monday – Saturday: **9:00 - 21:00 EDT**

Sunday: **closed**

Address



Harbour Towne Marina, 850 NE 3rd St,
STE 213, Dania, FL 33004