

MUSBE DREAMIN — WESTSHIP/WESTPORT



Судостроитель:
WESTSHIP/WESTPORT

Год постройки: 1998

Модель: Моторная яхта

Цена: ЦЕНА ЯХТЫ ПО ЗАПРОСУ

Местонахождение: United States

Длина общая: 108' 0" (32.92m)

Ширина: 23' 0" (7.01m)

Макс. осадка: 5' 6" (1.68m)

Купить **MUSBE DREAMIN — WESTSHIP/WESTPORT** а также выбрать подходящую вам яхту из нашего каталога яхт вам поможет опытный яхтенный брокер Андрей Шестаков. На сегодняшний день компания **Shestakov Yacht Sales Inc.** имеет большое количество яхт в собственном списке продаж, а также тесно сотрудничает со всеми крупными яхтенными производителями по всему миру. Для того чтобы купить яхту **MUSBE DREAMIN — WESTSHIP/WESTPORT** а также проконсультироваться по любому вопросу связанному с покупкой, продажей, чартером яхт позвоните по телефону **+7(918)465-66-44**.

ОГЛАВЛЕНИЕ

ОГЛАВЛЕНИЕ	2
ХАРАКТЕРИСТИКИ	3
Обзор	3
Основная информация	3
Размеры	3
Скорость, вместимость и масса	3
Размещение	3
Корпус и палуба	3
Информация о двигателе	4
ПОДРОБНОЕ ОПИСАНИЕ	5
Major Features	5
Исключения	8
Отказ от ответственности	8
ФОТОГРАФИИ	9
КОНТАКТЫ	20
Контактная информация	20
Телефоны	20
Время работы	20
Адрес	20

ХАРАКТЕРИСТИКИ

Обзор

Beautiful 108 Westship, easy to see in south Florida.

Основная информация

Тип судна: Моторная яхта

Подкатегория: Raised Pilothouse

Модельный год: 1998

Год постройки: 1998

Страна: United States

Размеры

Длина общая: 108' 0" (32.92m)

Ширина: 23' 0" (7.01m)

Макс. осадка: 5' 6" (1.68m)

Скорость, вместимость и масса

Вместимость воды: 750 Gallons

Объем топливного бака: 5000 Gallons

Размещение

Всего кают: 4

Корпус и палуба

Материал корпуса: Fiberglass

Информация о двигателе

Двигатели: 2

Производитель: MTU

Модель: 8V396 TE94

Тип топлива: Diesel

ПОДРОБНОЕ ОПИСАНИЕ

Major Features

Noteworthy Items:

- Full Beam Master Stateroom, plus VIP and 3 Guest - Fully equipped Country Kitchen with ample storage space - Great Flybridge with oversized Jacuzzi, Wetbar, Stereo System - Consistently and professionally maintained - (2) MTU 8V396TE94 – W5 - SMOH - Approx. 400 hours - New Exterior paint – 2012 - New Hard Top – 2012

Accommodations Sleeps 10 in 5 guest staterooms, all with ensuite heads. Crew sleeps four in 2 cabins (3 berths), including separate Captain's cabin.

Accessed via the cockpit are the CREW'S QUARTERS to starboard with (2) single berths, large closet, head, and crew dinette area equipped with microwave and refrigerator. To port is the CAPTAIN'S CABIN with double berth and head, sink and shower. Forward is the ENGINE ROOM.

Two (2) amidships GUEST STATEROOMS are accessed from the MAIN SALON via a forward curved stairway. The port cabin has a queen bed with ensuite head, the starboard cabin has (2) double beds with ensuite head. The full beam MASTER STATEROOM is forward of the GUEST STATEROOMS with a centerline king bed, settee, and vanity table. Forward of the sleeping area is the His and Hers master bath with Jacuzzi tub.

Two (2) additional staterooms are accessed from the main deck, forward of the dinette area. The guest stateroom to port features a double bed with ensuite head and the forward cabin has V-berths and head that can also be used as a dayhead. On the MAIN DECK forward is the fully equipped "COUNTRY KITCHEN" featuring a breakfast bar with two bistro chairs and raised dinette area that can accommodate up to 10 guests.

Just aft of the entry foyer; where to starboard is a day head, starts the MAIN SALON with formal dining area that accommodates 8 guests, two large comfortable sofas set in an "L" shape, coffee table and armchair. Sofas and chairs upholstered in beautiful fabrics, fine furniture, and panoramic views create a very elegant ambiance. The main salon also offers a concealed entertainment center and a fully equipped bar with (4) round chairs set in front. The AFT DECK with table provides built-in seating and (3) occasional chairs for 10 guests to seat comfortably. Stairs on both sides lead down to the cockpit. Stairs also access the FLYBRIDGE with helm, lounge, bar with (4) stools, Jacuzzi which cover converts to a sun pad, tender and (2) wave runners. Forward to port is an entrance to the raised PILOTHOUSE with an "L" shaped settee with table.

Salon The Main Salon can be accessed by port and starboard midship foyers or from her comfortable Aft Deck through a clear Lexan sliding door. The forward bulkhead has birdseye maple inlays and entertainment center. Formal dining for up to (8) with port & starboard buffets

that provide ample storage for formal dining china, flatware and crystal. Aft to starboard a comfortable custom sofa, built-in end tables, love seat and a club chair with ottoman make for a comfortable setting. To port, sit down service bar with four (4) comfortable barrel chairs has been kept level with the windows as not to obstruct view. Air conditioning flows from overhead soffit so as not to create cold spots and reduce noise.

Galley Located forward on lower deck is the full beam master stateroom, which has a centerline king bed. • Centerline king berth • Night stands with lamps • Forward mirrored bulkhead • Built-in overhead reading lamps • To port, (2) opening port lights with privacy shade • Built-in sofa with storage and safe below • Large walk-in cedar-lined closet with private section able to be blocked with full length mirror inside door • To starboard, built-in vanity/desk with drawers, stool, Panasonic telephone/intercom • Built-in (13) drawer dresser with cedar drawers and marble top • Sony Wega 22”

Master Stateroom Located forward on lower deck is the full beam master stateroom, which has a centerline king bed. • Centerline king berth • Night stands with lamps • Forward mirrored bulkhead • Built-in overhead reading lamps • To port, (2) opening port lights with privacy shade • Built-in sofa with storage and safe below • Large walk-in cedar-lined closet with private section able to be blocked with full length mirror inside door • To starboard, built-in vanity/desk with drawers, stool, Panasonic telephone/intercom • Built-in (13) drawer dresser with cedar drawers and marble top • Sony Wega 22”

Master Bath Ensuite his & her heads with port & starboard opening port lights concealed by sliding mirrors, ceilings mirrored, Whirlpool tub, separate stall shower with dual shower sprayers, his & her sinks, linen lockers and pull-out clothes hamper.

Port Guest Stateroom • Queen berth with drawers below • Night stands with lamps • Mirrored aft bulkhead • Overhead reading lights • Built-in (6) drawer dresser • Ensuite head with sink • (2) Opening port lights with privacy shade • Cedar-lined closet with full length mirror • Opening port light • Panasonic Phone/Intercom • Mirrored medicine cabinet • Stall shower

Starboard Guest Stateroom • Oversized twin berths separated by nightstand with drawers and lamp • Cedar-lined hanging locker with full length mirror • Built-in overhead reading lights • Aft smoked mirrored bulkhead • (2) Opening port lights w/ privacy shade • Built-in (3) drawer dresser • Ensuite head with stall shower • Opening port light with privacy shade • Insignia 22” Flatscreen with built-in DVD

Forward Guest Stateroom • Starting forward "V" berth arrangement with forward mirrored bulkhead • Aft to Port is the double berth Guest Stateroom with drawers below • Hanging lockers under berths • Cedar-lined hanging locker with mirror • Built-in drawers • Digital air conditioning control • Escape hatch • Opening port light • Built-in washer and dryer Whirlpool • Cedar-lined hanging locker with mirror • Built-in desk with stool • Ensuite access to head with stall shower, sink, mirrored medicine cabinet

Forward Guest Stateroom • Starting forward "V" berth arrangement with forward mirrored bulkhead • Aft to Port is the double berth Guest Stateroom with drawers below • Hanging lockers under

berths • Cedar-lined hanging locker with mirror • Built-in drawers • Digital air conditioning control • Escape hatch • Opening port light • Built-in washer and dryer Whirlpool • Cedar-lined hanging locker with mirror • Built-in desk with stool • Ensuite access to head with stall shower, sink, mirrored medicine cabinet

Crew Quarters • Private entrance from Cockpit down (4) steps to starboard, crew dinette with storage below • Forward through Freeman water tight door to full width walk-in Engine Room • Directly to starboard, (1) 7' x 34" berth with (3) drawers below, (1) 6'4" x 34" berth, cedar-lined hanging locker, stainless steel sink with storage below, mirrored medicine cabinet • Forward to port, Captain's Cabin with double berth and (3) large drawers below, cedar-lined hanging locker, Panasonic telephone/intercom, digital air • To port, head with stall shower, sink with storage below, mirrored medicine cabinet and opening port light • Forward to port, additional built-in Whirlpool stack washer & dryer • Each berth has an opening port light • Air conditioning digital control • G.E. microwave • Panasonic telephone/intercom • Ensuite head with shower • Privacy door to companionway • Built-in "U"-Line under counter refrigerator • To starboard, ships main electrical panel

Audio & Visual Equipment Main Salon: • 24" Mitsubishi TV • Kenwood Stereo System • Mitsubishi VCR • Elite DVD • Yamaha CD player w/surround sound • Onkyo AV receiver

Master Suite: • Sony Wega 22" • Sony DVD / VCR player • Denon Audio System amplifier deck • Denon Audio System Tuner CD Changer Port Guest: • Panasonic TV / VCR / FM radio • Yamaha CD Player • Yamaha Stereo Receiver

Starboard Guest: • Insignia 22" Flatscreen with built-in DVD player • Panasonic TV / VCR / FM radio • Yamaha CD Player • Yamaha Stereo Receiver

Forward Guest: • RCA TV / VCR • Sony Car Stereo Fwd Port Guest: • RCA TV / VCR • Sony Car Stereo

Country Kitchen: • 13" Panasonic TV / VCR / FM Radio

Captain's Cabin: • 13" Panasonic TV w/VCR and Radio • Sony Car Stereo • RCA Receiver

Crew Mess: • Flat Screen TV • Sony Car Stereo

Electronics & navigational Equipment • JRC 72 mile RADAR • Nobeltec 48 mile RADAR • XM Weather • Depth Finder • CCTV aft deck and engine room • Two (2) vei monitors on Flybridge • Four (4) Flatron LCD Monitors in Wheelhouse • (2) Simrad AP35 FC autopilot w/KVH Fluxgate compass • Hynautic power steering system with (2) helm locations • (2) Ritchie 6" Globemaster F-600 compasses • NOBELTEC Navigation Program • Satellite TV system • (2) Northstar 6100 i • KVH Satellite with (2) receivers • Stephens SEA 1625 active antenna coupler for SEA 225 • Shakespeare SH-5308 23'2" piece SSB antenna and mount • (2) Stephens SEA 156 25 watt VHF radios • Dantronics DAN360 SYS1E TV/FM Antenna • Panasonic programmable phones with LCD display • B&G Network Wind Pack; B&G Wind Display Repeater Pack • B&G (NET DPDU) Depth Display Repeater Pack • (2) Sea-8000 30 watt hailer / intercoms • (4) Sea-8001, 8

HM hailer / PA horns • EMachines computer • B&G (NET SPDU) Speed Display Repeater BG HS 2000 • (2) Simrad AP35 FC Autopilot with KVH Fluxgate Compass • B&G (NET DPDU) SB Depth System with display, removable sensor, bronze housing, cables • Robertson 1511 angle indicators • (2) VICON VC2820 24 Color Camera Systems

Deck Equipment • Covers for tender and wave runners • Bimini top • Satellite receivers • Carpet runners • Navigation lights • Rod holders • Fog horn • Searchlight • 5-step Marquipt boarding ladder • (6) 60' nylon dock lines w/ 36' eye splice • Fresh water washdown • Maxwell hydraulic windlass • Cockpit hot & cold shower • Swim ladder • Life preservers

Engine & Mechanical Equipment • A/C pump • Aluminum engine beds • Fire extinguisher system • Hydraulic bow thruster • Dual Racor filters • (2) Mach 5 Headhunter water pumps • (8) electric bilge pumps with manual/automatic switches and alarms • Smullin Sound-Down water drop mufflers for gensets • (2) 1200 gpd watermakers • Gray water pump • Emergency bilge pump system • Work bench • Naiad stabilizer system • Lube oil change system • Marine Air air conditioning 15 ton capacity • Spare props, 5 blade Bird Johnson mounted • (1) 220V, 52 gallon, (1) 220V, 30 gallon hot water heaters • Port generator, 7960 hrs. Stbd generator 8389 hrs

Electrical System • (2) 65 kW generators • Battery chargers • (2) Banks of (2) 8-D, 225 amp/hr batteries for main engines • (2) 24V-DC deep cycle battery banks for electronics • (2) 8-D, 225 amp/hr batteries for generators • (2) 100 amp/220V shore power cords • (2) 24V-DC deep cycle battery banks for ship's service

Tenders & Watersports • Novurania 16' with new Yamaha 4 stoke engine • (2) Sea Doo GTX

Exclusions Some personal items presented in the photos are not included with the sale of the boat

Исключения

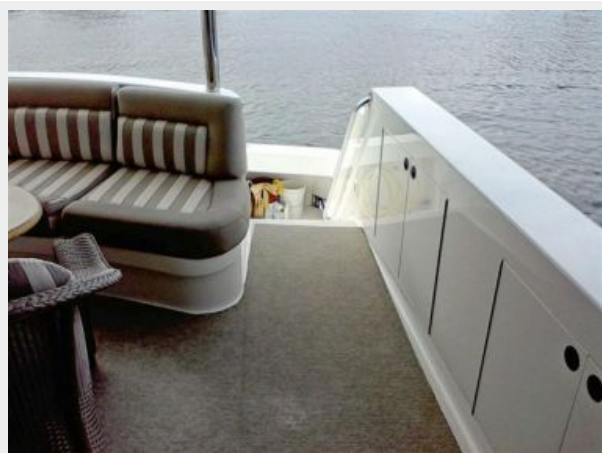
При продаже яхты исключаются личные вещи владельца.

Отказ от ответственности

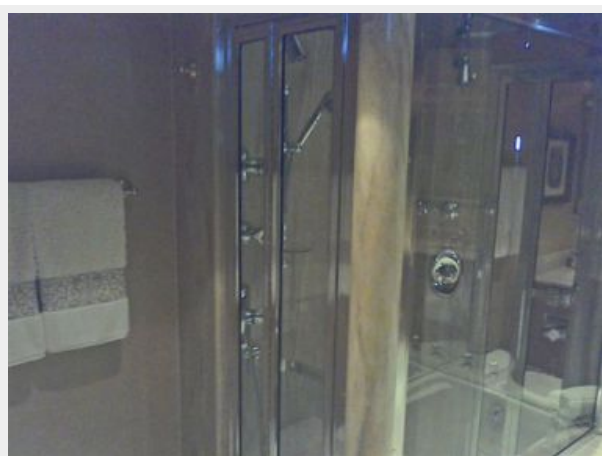
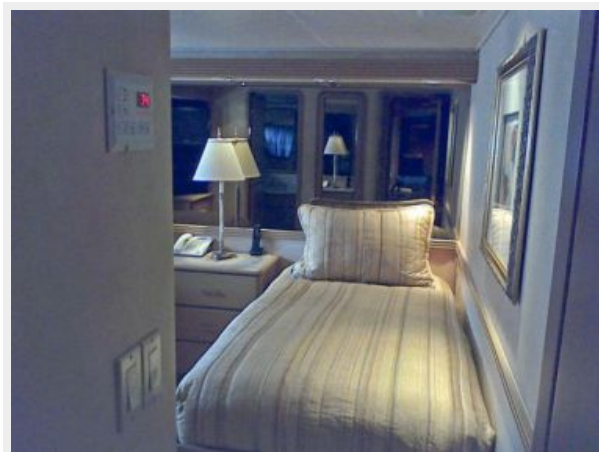
Компания предоставляет описание судна или яхты добросовестно, но не может гарантировать точность этой информации, а также не ручается за техническое состояние. Покупатель должен проинструктировать своих агентов или оценщиков исследовать представленную информацию более подробно, по собственному желанию. Продажа судна или яхты, изменение цены или снятие с продажи будет происходить без предварительного уведомления.

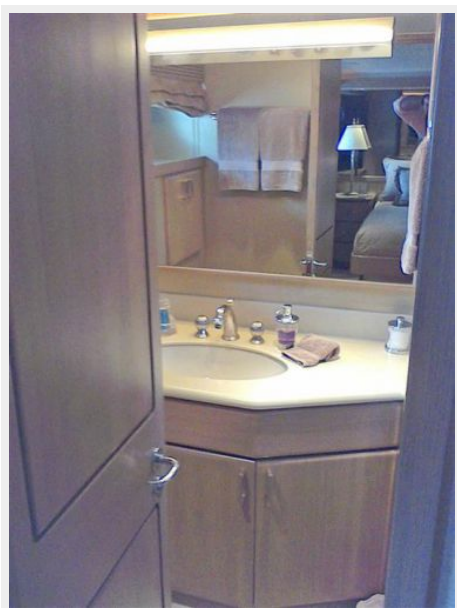
ФОТОГРАФИИ











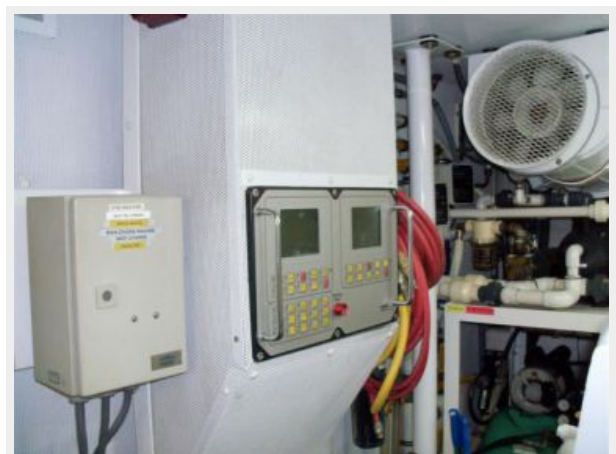












КОНТАКТЫ

Андрей Шестаков (Andrey Shestakov) – ведущий яхтенный брокер отдела продаж яхт и судов компании Shestakov Yacht Sales Inc. Официальный представитель Shestakov Yacht Sales Inc. для русскоговорящих клиентов в центральном офисе компании в Майами/Форт Лодердейл/Флорида/США.

Контактная информация

Email: andrey@shestakovyachtsales.com

Web: shestakovyachtsales.com

Телефоны

Краснодарский край: **+7(918)465-66-44**

США, Майами, Флорида: **+1(954)274-4435**

Время работы

Понедельник – Суббота: **9:00 - 21:00**
EDT

Воскресенье: **Закрито**

Адрес



Harbour Towne Marina, 850 NE 3rd St,
STE 213, Dania, FL 33004