

WHY LAND — HI STAR



Builder: HI STAR

Year Built: 1989

Model: Sport Fisherman

Price: PRICE ON APPLICATION

Location: United States

LOA: 52' 0" (15.85m)

Beam: 15' 6" (4.72m)

Max Draft: 4' 0" (1.22m)

Cruise Speed: 19 Kts. (22 MPH)

Max Speed: 24 Kts. (28 MPH)

Our experienced yacht broker, Andrey Shestakov, will help you choose and buy a yacht that best suits your needs **Why Land — HI STAR** from our catalogue. Presently, at Shestakov Yacht Sales Inc., we have a wide variety of yachts available on our sale's list. We also work in close contact with all the big yacht manufacturers from all over the world.

If you would like to buy a yacht **Why Land — HI STAR** or would like help answering any questions concerning purchasing, selling or chartering a yacht, please call **+1(954)274-4435**

TABLE OF CONTENTS

TABLE OF CONTENTS	2
SPECIFICATIONS	4
Overview	4
Basic Information	4
Dimensions	4
Speed, Capacities and Weight	4
Accommodations	4
Hull and Deck Information	5
Engine Information	5
DETAILED INFORMATION	6
Vessel Walkthrough	6
Electronics	7
Galley	8
Electrical	8
REMARKS	9
Exclusions	9
Disclaimer	9
PHOTOS	10
Salon	10
Salon/Dinette	10
Salon Forward	10
Salon Aft	10
Lower Helm	10
Galley	10
Galley	11
Galley	11
Washer/Dryer	11
Guest Stateroom	11

Guest Bath	11
Master Stateroom	11
Master Stateroom	12
Master Bath	12
Cockpit	12
Flybridge Helm	12
Flybridge Helm	12
Engine Room	12
Stern	13
Starboard Bow Profile	13
Port Profile	13
CONTACTS	14
Contact details	14
Telephones	14
Office hours	14
Address	14

SPECIFICATIONS

Overview

Regarded as one of the best built imports both for quality design and engineering as well as excellent construction techniques, this Hi-Star features teak and holly sole throughout and exquisite teak joinery in a two stateroom, two head layout. Both upper and lower helm stations with full electronics. All fiberglass exterior with sturdy type 316 stainless steel deck hardware and railings. Bimini awning over the flybridge and an aft deck sun shade. Powered with twin J&T Detroit Diesels 671TI's 485 HP each with only 1260 original hours.

Basic Information

Category: Sport Fisherman

Sub Category: Convertible

Model Year: 1989

Year Built: 1989

Country: United States

Dimensions

LOA: 52' 0" (15.85m)

Beam: 15' 6" (4.72m)

Max Draft: 4' 0" (1.22m)

Speed, Capacities and Weight

Cruise Speed: 19 Kts. (22 MPH)

Max Speed: 24 Kts. (28 MPH)

Displacement: 38000 Pounds

Water Capacity: 250 Gallons

Holding Tank: 60 Gallons

Fuel Capacity: 500 Gallons

Accommodations

Total Cabins: 2

Total Heads: 2

Hull and Deck Information

Hull Material: Fiberglass

Engine Information

Engines: 2

Manufacturer: Detroit Diesel

Model: J&T 671TI

Engine Type: Inboard

Fuel Type: Diesel

DETAILED INFORMATION

Vessel Walkthrough

From the aft deck one enters the salon through aluminum framed sliding glass doors. The salon features teak and holly sole, teak panelled walls and beautifully crafted teak cabinets and furniture. Large windows allow a 360 degree view around the vessel. Venetian blinds accommodate shade and privacy. The L-shaped settee to starboard and the two barrel chairs to port are done in dark blue leather. There is a high/low dining or cocktail table in front of the settee and built in teak cabinetry opposite conceals the television and entertainment center. Forward to starboard is the lower helm station with complete instrumentation. Three large windows across the front of the vessel give the helmsman excellent visibility. (Note that the teak and holly salon floor has four large opening hatches that allow additional engine room access). From the salon going forward down teak steps, (which lift up for routine access to the engine room), the galley is to port and features nicely crafted teak cabinets for abundant storage. There is an opening portlight centered above the sink that allows natural light and ventilation into the galley. The galley sole is teak and holly as are all the floors throughout the vessel. The storage cabinets are very nicely done with curved teak tambour doors on the corner cabinets and grate type teak doors on the flat surfaces. The galley has a large U shaped work surface in white formica and there are two deep storage bins in the counter top in the corners. All the appliances are neat and clean and in good working order. Opposite the galley to starboard is the guest cabin with twin bunk beds. There is an opening portlight in this cabin and adequate hanging locker space. Going forward down the hallway towards the master stateroom, there is a combo washer/dryer built in to a cabinet with teak doors to starboard. To port is the second access to the stall shower that adjoins the master bathroom. Forward to starboard is a second bathroom with vanity. Both heads have opening portlights which allows for natural light and ventilation. The master stateroom is all the way forward and features a queen island berth, opening portlights port and starboard and a large deck hatch in the overhead. There are hanging lockers, a make-up vanity with stool and mirror, large drawers beneath the bed and a mirrored bulkhead forward that allows access to the chain locker. The master bath is aft to port and adjoins a large stall shower. Teak panelled bulkheads and teak and holly sole as well as the finely crafted teak furniture combined with the six opening portlights and large salon windows give this yacht an atmosphere that is rich, yet light and airy. The expansive cockpit measures 132 square feet and features a molded non-skid deck that is among the best in the industry. Equipped with a Lee fighting chair, five drawer tackle center, live bait well, sink and ice maker. There is a stainless steel ladder to the flybridge with fiberglass non-skid treads. The cockpit also has an aluminum framed bimini shade that covers the entire cockpit, but which also folds back to allow sun on half of the cockpit deck. The flybridge has the helm aft with bench seating athwartships forward and two swivel chairs for the helmsman and navigator. There is a stainless steel framed bimini top, a clear plexiglass windscreen, and a very large storage area in the flybridge coaming forward. The bench seating has storage under as well. The flybridge deck is molded non-skid. The foredeck has two hatches that access the chain locker below the electric windlass. There is a 2000lb. Davit which deploys the ships tender mounted on the foredeck. There are very wide sidedecks as well as substantial stainless steel

handrails that combined with the excellent molded non-skid decks give one a feeling of safety and sure footedness when going forward. There is a sunbrella cover over the three large windows forward. There are chocks on the foredeck for a tender. The Boston Whaler presently mounted on the foredeck is excluded from the sale.

- CONSTRUCTION; Fiberglass with Airex foam cored hull above waterline, deck, and superstructure.
- Hand-layed, gelcoated FRP hull
- Solid Fiberglass below waterline.
- Bronze Seacocks
- Non-skid FRP decks
- Type 316 Stainless Steel Rails.
- 316 SS anchor roller.
- Aquamet 22 shafts.
- Dual steering and control stations.
- Hynautic hydraulic steering.
- Morse throttle and gear controls.
- Engine Alarms(high temp and low oil)
- Engine, Generator oil transfer pump.
- Racor fuel Filters.
- Electric fuel transfer pump.
- 50 amp battery charger.
- Lead foam engine room sound insulation.
- (6) stainless steel opening portlights.
- (1) anodized aluminum deck hatch.
- Anodized aluminum window frames.
- 12v and 110 lighting throughout.
- Washer / Dryer.
- 2000lb. Davit and motor.
- Transom door and swim platform.
- Transom Shower.
- ac/dc engine room lights.
- filtered freshwater system.
- Intercom.
- Anchor washdown.
- Fender holders.
- Lee Fighting Chair
- Lee Outriggers
- 12.5 kw Kohler generator w/1600hrs.
- Optional 485hp J&T Detroit 6V71TI's

Electronics

- FLYBRIDGE HELM:
- NEW Raytheon 48mile 4kw open array Radar.
- Raymarine C120 GPS, Chartplotter.
- Robertson AP200 autopilot.
- Guest remote spotlight.
- Bennett trim tabs.
- Icom IC-M502 VHF radio.
- VDO engine instrumentation.
- VDO rudder angle indicator.
- Ritchie 6" compass.
- Poly Planer Marine MRD 60 CD/AM/FM with (4) speakers.
- LOWER HELM:
- Robertson AP200 autopilot
- Simrad CP32 Chartplotter
- Datamarine depth, speed, distance
- VDO engine instrumentation.
- VDO rudder angle indicator.
- Icom VHF
- Maxwell windlass remote.
- Bennett trim tabs.
- (3)Rule manual/automatic bilge pumps.
- Ritchie 6" compass

Galley

- Sharp Carousel II convection microwave.
- New Norcold refrigerator w/ freezer
- Galley Maid (3) burner electric stove and oven.
- Black & Decker Spacesaver coffee maker.
- Double SS Sink
- Tambour door corner cabinets.
- (6) utensil / utility drawers.
- White Formica countertops.
- Trash Compactor
- Splendide Combomatic Washer / Dryer

Electrical

- Kohler generator 12.5 kw 1600 hrs.
- 5 batteries & parallel switch (4 are 8D, 1 is 12v for gen)
- Battery charger
- 12v 110 v electrical systems
- Dockside electrical cables

- 2 30 amps or 50 amp sys

REMARKS

Hi-Star was founded by second generation Taiwanese Boatbuilders and began production in 1986. They had the most modern production facilities on the island of Taiwan and earned a reputation for high quality engineering and excellent construction. Being the first Taiwan builder to adopt the American system of full control of every operation from original design through marketing and final delivery, they were able to achieve a level of consistent quality in all the boats they built. Climate control in the molding process, (controlling both temperature and humidity), as well as climate controlled fiberglass storage ensured there was no excess humidity to damage the process. Airex coring is used above the waterline to enhance rigidity and reduce weight. All of the Hi-Star prototypes were extensively tank tested and the result was a yacht that transitions from displacement to planing mode with very little change in trim, leaving a clean and flat wake. (A sure sign of planing efficiency). Hi-Star produced yachts from 42' to 55' and ended production in 1993 due to the economic recession of the early 1990's and the luxury tax added to yacht sales. The hull of the 55' Hi Star was so successful that it was used as the basic platform of the 57' Grand Harbour Raised Pilothouse which began production in the early 2000's. Hi-Star is currently building the Altima line of motoryachts as well as the new series Hi-Star.

Exclusions

Owner's personal belongings.

Disclaimer

The Company offers the details of this vessel or yacht in good faith but cannot guarantee or warrant the accuracy of this information nor warrant the condition of the vessel. A buyer should instruct his representatives, agents, or his surveyors, to investigate such details as the buyer desires validated. This vessel or yacht is offered subject to prior sale, price change, or withdrawal without notice.

PHOTOS

Salon



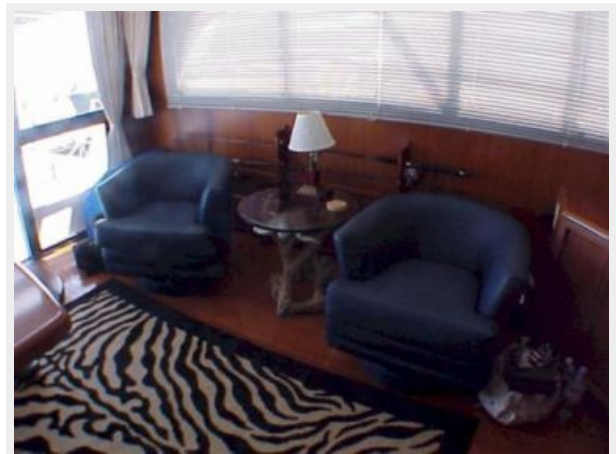
Salon/Dinette



Salon Forward



Salon Aft



Lower Helm



Galley



Galley



Galley



Washer/Dryer



Guest Stateroom



Guest Bath



Master Stateroom



Master Stateroom



Master Bath



Cockpit



Flybridge Helm



Flybridge Helm



Engine Room



Stern



Starboard Bow Profile



Port Profile



CONTACTS

Andrey Shestakov, leading yacht broker of the sales department of Shestakov Yacht Sales Inc. Shestakov Yacht Sales Inc., the official representative of the Miami/Fort Lauderdale FL headquarters.

Contact details

Email: andrey@shestakovyachtsales.com

Web: shestakovyachtsales.com/en/

Telephones

USA: +1(954)274-4435

Office hours

Monday – Saturday: **9:00 - 21:00** EDT

Sunday: **closed**

Address



Harbour Towne Marina, 850 NE 3rd St,
STE 213, Dania, FL 33004