

## WHY LAND — HI STAR



**Судостроитель:** HI STAR

**Год постройки:** 1989

**Модель:** Катер для спортивной рыбалки

**Цена:** **ЦЕНА ЯХТЫ ПО ЗАПРОСУ**

**Местонахождение:** United States

**Длина общая:** 52' 0" (15.85m)

**Ширина:** 15' 6" (4.72m)

**Макс. осадка:** 4' 0" (1.22m)

**Крейс. скорость:** 19 Kts. (22 MPH)

**Макс. скорость:** 24 Kts. (28 MPH)

Купить **Why Land — HI STAR** а также выбрать подходящую вам яхту из нашего каталога яхт вам поможет опытный яхтенный брокер Андрей Шестаков. На сегодняшний день компания **Shestakov Yacht Sales Inc.** имеет большое количество яхт в собственном списке продаж, а также тесно сотрудничает со всеми крупными яхтенными производителями по всему миру.

Для того чтобы купить яхту **Why Land — HI STAR** а также проконсультироваться по любому вопросу связанному с покупкой, продажей, чартером яхт позвоните по телефону **+7(918)465-66-44**.

# ОГЛАВЛЕНИЕ

---

ОГЛАВЛЕНИЕ	2
ХАРАКТЕРИСТИКИ	4
Обзор	4
Основная информация	4
Размеры	4
Скорость, вместимость и масса	4
Размещение	4
Корпус и палуба	5
Информация о двигателе	5
ПОДРОБНОЕ ОПИСАНИЕ	6
Vessel Walkthrough	6
Electronics	7
Galley	8
Electrical	8
REMARKS	9
Исключения	9
Отказ от ответственности	9
ФОТОГРАФИИ	10
Salon	10
Salon/Dinette	10
Salon Forward	10
Salon Aft	10
Lower Helm	10
Galley	10
Galley	11
Galley	11
Washer/Dryer	11
Guest Stateroom	11

---

Guest Bath	11
Master Stateroom	11
Master Stateroom	12
Master Bath	12
Cockpit	12
Flybridge Helm	12
Flybridge Helm	12
Engine Room	12
Stern	13
Starboard Bow Profile	13
Port Profile	13
<b>КОНТАКТЫ</b>	<b>14</b>
Контактная информация	14
Телефоны	14
Время работы	14
Адрес	14

# ХАРАКТЕРИСТИКИ

## Обзор

Regarded as one of the best built imports both for quality design and engineering as well as excellent construction techniques, this Hi-Star features teak and holly sole throughout and exquisite teak joinery in a two stateroom, two head layout. Both upper and lower helm stations with full electronics. All fiberglass exterior with sturdy type 316 stainless steel deck hardware and railings. Bimini awning over the flybridge and an aft deck sun shade. Powered with twin J&T Detroit Diesels 671TI's 485 HP each with only 1260 original hours.

## Основная информация

**Тип судна:** Катер для спортивной рыбалки

**Подкатегория:** Convertible

**Модельный год:** 1989

**Год постройки:** 1989

**Страна:** United States

## Размеры

**Длина общая:** 52' 0" (15.85m)

**Ширина:** 15' 6" (4.72m)

**Макс. осадка:** 4' 0" (1.22m)

## Скорость, вместимость и масса

**Крейс. скорость:** 19 Kts. (22 MPH)

**Макс. скорость:** 24 Kts. (28 MPH)

**Водоизмещение:** 38000 Pounds

**Вместимость воды:** 250 Gallons

**Вместимость сточного бака:** 60 Gallons

**Объем топливного бака:** 500 Gallons

## Размещение

**Всего кают:** 2

**Всего ком. состава:** 2

---

## Корпус и палуба

---

**Материал корпуса:** Fiberglass

---

## Информация о двигателе

---

**Двигатели:** 2

**Производитель:** Detroit Diesel

**Модель:** J&T 671T1

**Тип двигателя:** Inboard

**Тип топлива:** Diesel

# ПОДРОБНОЕ ОПИСАНИЕ

## Vessel Walkthrough

From the aft deck one enters the salon through aluminum framed sliding glass doors. The salon features teak and holly sole, teak panelled walls and beautifully crafted teak cabinets and furniture. Large windows allow a 360 degree view around the vessel. Venetian blinds accommodate shade and privacy. The L-shaped settee to starboard and the two barrel chairs to port are done in dark blue leather. There is a high/low dining or cocktail table in front of the settee and built in teak cabinetry opposite conceals the television and entertainment center. Forward to starboard is the lower helm station with complete instrumentation. Three large windows across the front of the vessel give the helmsman excellent visibility. (Note that the teak and holly salon floor has four large opening hatches that allow additional engine room access). From the salon going forward down teak steps, (which lift up for routine access to the engine room), the galley is to port and features nicely crafted teak cabinets for abundant storage. There is an opening portlight centered above the sink that allows natural light and ventilation into the galley. The galley sole is teak and holly as are all the floors throughout the vessel. The storage cabinets are very nicely done with curved teak tambour doors on the corner cabinets and grate type teak doors on the flat surfaces. The galley has a large U shaped work surface in white formica and there are two deep storage bins in the counter top in the corners. All the appliances are neat and clean and in good working order. Opposite the galley to starboard is the guest cabin with twin bunk beds. There is an opening portlight in this cabin and adequate hanging locker space. Going forward down the hallway towards the master stateroom, there is a combo washer/dryer built in to a cabinet with teak doors to starboard. To port is the second access to the stall shower that adjoins the master bathroom. Forward to starboard is a second bathroom with vanity. Both heads have opening portlights which allows for natural light and ventilation. The master stateroom is all the way forward and features a queen island berth, opening portlights port and starboard and a large deck hatch in the overhead. There are hanging lockers, a make-up vanity with stool and mirror, large drawers beneath the bed and a mirrored bulkhead forward that allows access to the chain locker. The master bath is aft to port and adjoins a large stall shower. Teak panelled bulkheads and teak and holly sole as well as the finely crafted teak furniture combined with the six opening portlights and large salon windows give this yacht an atmosphere that is rich, yet light and airy. The expansive cockpit measures 132 square feet and features a molded non-skid deck that is among the best in the industry. Equipped with a Lee fighting chair, five drawer tackle center, live bait well, sink and ice maker. There is a stainless steel ladder to the flybridge with fiberglass non-skid treads. The cockpit also has an aluminum framed bimini shade that covers the entire cockpit, but which also folds back to allow sun on half of the cockpit deck. The flybridge has the helm aft with bench seating athwartships forward and two swivel chairs for the helmsman and navigator. There is a stainless steel framed bimini top, a clear plexiglass windscreen, and a very large storage area in the flybridge coaming forward. The bench seating has storage under as well. The flybridge deck is molded non-skid. The foredeck has two hatches that access the chain locker below the electric windlass. There is a 2000lb. Davit which deploys the ships tender mounted on the foredeck. There are very wide sidedecks as well as substantial stainless steel

handrails that combined with the excellent molded non-skid decks give one a feeling of safety and sure footedness when going forward. There is a sunbrella cover over the three large windows forward. There are chocks on the foredeck for a tender. The Boston Whaler presently mounted on the foredeck is excluded from the sale.

- CONSTRUCTION; Fiberglass with Airex foam cored hull above waterline, deck, and superstructure.
- Hand-layed, gelcoated FRP hull
- Solid Fiberglass below waterline.
- Bronze Seacocks
- Non-skid FRP decks
- Type 316 Stainless Steel Rails.
- 316 SS anchor roller.
- Aquamet 22 shafts.
- Dual steering and control stations.
- Hynautic hydraulic steering.
- Morse throttle and gear controls.
- Engine Alarms(high temp and low oil)
- Engine, Generator oil transfer pump.
- Racor fuel Filters.
- Electric fuel transfer pump.
- 50 amp battery charger.
- Lead foam engine room sound insulation.
- (6) stainless steel opening portlights.
- (1) anodized aluminum deck hatch.
- Anodized aluminum window frames.
- 12v and 110 lighting throughout.
- Washer / Dryer.
- 2000lb. Davit and motor.
- Transom door and swim platform.
- Transom Shower.
- ac/dc engine room lights.
- filtered freshwater system.
- Intercom.
- Anchor washdown.
- Fender holders.
- Lee Fighting Chair
- Lee Outriggers
- 12.5 kw Kohler generator w/1600hrs.
- Optional 485hp J&T Detroit 6V71TI's

---

## Electronics

---

- FLYBRIDGE HELM:
- NEW Raytheon 48mile 4kw open array Radar.
- Raymarine C120 GPS, Chartplotter.
- Robertson AP200 autopilot.
- Guest remote spotlight.
- Bennett trim tabs.
- Icom IC-M502 VHF radio.
- VDO engine instrumentation.
- VDO rudder angle indicator.
- Ritchie 6" compass.
- Poly Planer Marine MRD 60 CD/AM/FM with (4) speakers.
- LOWER HELM:
- Robertson AP200 autopilot
- Simrad CP32 Chartplotter
- Datamarine depth, speed, distance
- VDO engine instrumentation.
- VDO rudder angle indicator.
- Icom VHF
- Maxwell windlass remote.
- Bennett trim tabs.
- (3)Rule manual/automatic bilge pumps.
- Ritchie 6" compass

---

## Galley

---

- Sharp Carousel II convection microwave.
- New Norcold refrigerator w/ freezer
- Galley Maid (3) burner electric stove and oven.
- Black & Decker Spacesaver coffee maker.
- Double SS Sink
- Tambour door corner cabinets.
- (6) utensil / utility drawers.
- White Formica countertops.
- Trash Compactor
- Splendide Combomatic Washer / Dryer

---

## Electrical

---

- Kohler generator 12.5 kw 1600 hrs.
- 5 batteries & parallel switch (4 are 8D, 1 is 12v for gen)
- Battery charger
- 12v 110 v electrical systems
- Dockside electrical cables



- 2 30 amps or 50 amp sys

## REMARKS

---

Hi-Star was founded by second generation Taiwanese Boatbuilders and began production in 1986. They had the most modern production facilities on the island of Taiwan and earned a reputation for high quality engineering and excellent construction. Being the first Taiwan builder to adopt the American system of full control of every operation from original design through marketing and final delivery, they were able to achieve a level of consistent quality in all the boats they built. Climate control in the molding process, (controlling both temperature and humidity), as well as climate controlled fiberglass storage ensured there was no excess humidity to damage the process. Airex coring is used above the waterline to enhance rigidity and reduce weight. All of the Hi-Star prototypes were extensively tank tested and the result was a yacht that transitions from displacement to planing mode with very little change in trim, leaving a clean and flat wake. (A sure sign of planing efficiency). Hi-Star produced yachts from 42' to 55' and ended production in 1993 due to the economic recession of the early 1990's and the luxury tax added to yacht sales. The hull of the 55' Hi Star was so successful that it was used as the basic platform of the 57' Grand Harbour Raised Pilothouse which began production in the early 2000's. Hi-Star is currently building the Altima line of motoryachts as well as the new series Hi-Star.

## Исключения

---

При продаже яхты исключаются личные вещи владельца.

## Отказ от ответственности

---

Компания предоставляет описание судна или яхты добросовестно, но не может гарантировать точность этой информации, а также не ручается за техническое состояние. Покупатель должен проинструктировать своих агентов или оценщиков исследовать представленную информацию более подробно, по собственному желанию. Продажа судна или яхты, изменение цены или снятие с продажи будет происходить без предварительного уведомления.

# ФОТОГРАФИИ

Salon



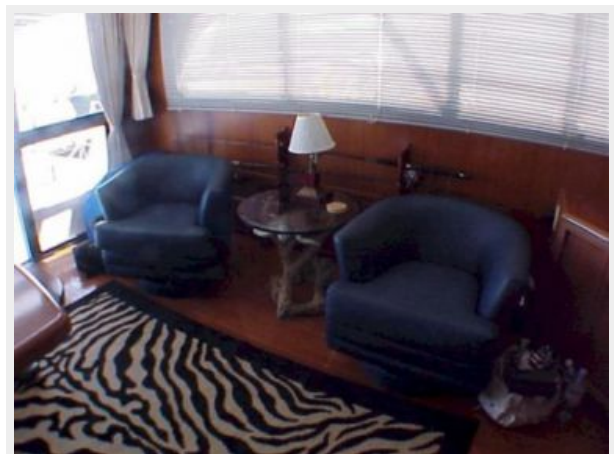
Salon/Dinette



Salon Forward



Salon Aft



Lower Helm



Galley



**Galley**



**Galley**



**Washer/Dryer**



**Guest Stateroom**



**Guest Bath**



**Master Stateroom**





**Master Stateroom**



**Master Bath**



**Сockpit**



**Flybridge Helm**



**Flybridge Helm**



**Engine Room**



**Stern**



**Starboard Bow Profile**



**Port Profile**



# КОНТАКТЫ

---

Андрей Шестаков (Andrey Shestakov) – ведущий яхтенный брокер отдела продаж яхт и судов компании Shestakov Yacht Sales Inc. Официальный представитель Shestakov Yacht Sales Inc. для русскоговорящих клиентов в центральном офисе компании в Майами/Форт Лодердейл/Флорида/США.

## Контактная информация

---

Email: [andrey@shestakovyachtsales.com](mailto:andrey@shestakovyachtsales.com)

Web: [shestakovyachtsales.com](http://shestakovyachtsales.com)

## Телефоны

---

Краснодарский край: **+7(918)465-66-44**

США, Майами, Флорида: **+1(954)274-4435**

## Время работы

---

Понедельник – Суббота: **9:00 - 21:00**  
EDT

Воскресенье: **Закрито**

## Адрес

---



Harbour Towne Marina, 850 NE 3rd St,  
STE 213, Dania, FL 33004