

WIND DREAMS — BENETEAU



Builder: BENETEAU

Year Built: 1995

Model: Cruising Sailboat

Price: PRICE ON APPLICATION

Location: United States

LOA: 40' 0" (12.19m)

Beam: 12' 10" (3.91m)

Max Draft: 5' 6" (1.68m)

Our experienced yacht broker, Andrey Shestakov, will help you choose and buy a yacht that best suits your needs **Wind Dreams — BENETEAU** from our catalogue. Presently, at Shestakov Yacht Sales Inc., we have a wide variety of yachts available on our sale's list. We also work in close contact with all the big yacht manufacturers from all over the world.

If you would like to buy a yacht **Wind Dreams — BENETEAU** or would like help answering any questions concerning purchasing, selling or chartering a yacht, please call **+1(954)274-4435**

TABLE OF CONTENTS

TABLE OF CONTENTS	2
SPECIFICATIONS	3
Overview	3
Basic Information	3
Dimensions	3
Speed, Capacities and Weight	3
Accommodations	3
Hull and Deck Information	3
Engine Information	4
DETAILED INFORMATION	5
Accommodations	5
Dining	6
Galley	6
Electrical Equipment	6
Electronics	7
Mechanical	7
Remarks	7
Exclusions	7
Disclaimer	7
PHOTOS	8
CONTACTS	14
Contact details	14
Telephones	14
Office hours	14
Address	14

SPECIFICATIONS

Overview

Very well maintained and well equipped, ready for her new owner to take her cruising today!!!!!!!!!!

Seller is buying larger boat but must sell this one first!!

Offers Welcome!!!

Basic Information

Category: Cruising Sailboat

Model Year: 1995

Year Built: 1995

Country: United States

Dimensions

LOA: 40' 0" (12.19m)

Beam: 12' 10" (3.91m)

Max Draft: 5' 6" (1.68m)

Clearance: 53' 0" (16.15m)

Speed, Capacities and Weight

Displacement: 16000 Pounds

Water Capacity: 148 Gallons

Holding Tank: 24 Gallons

Fuel Capacity: 40 Gallons

Accommodations

Total Cabins: 2

Hull and Deck Information

Hull Material: Fiberglass

Engine Information

Engines: 1

Manufacturer: Perkins

Model: Ba30-144

Fuel Type: Diesel

DETAILED INFORMATION

Accommodations

This functional and appealing layout offers three large staterooms, two nicely sized heads, a large salon, roomy galley and teak and holly floors throughout.

MASTER STATEROOM FORWARD

- Offset double berth to starboard
- Hanging locker
- Bench seating
- 2 opening ports with shades
- 2 closed ports
- Over head hatch
- Drawers
- Fan and lights

PORTSIDE AFT STATEROOM;

- Double berth with cushions
- Hanging locker
- Over head hatch
- 2 opening ports with shades
- 2 closed ports
- Lights
- Side access to the engine room

NAVIGATION STATION

- Main electrical panels

FORWARD HEAD FORWARD

- Manuel head w/holding tank and deck pump out
- Access to the holding tank
- Shower
- Sink
- Overhead hatch
- Cabinets
- Mirrors

AFT HEAD PORT SIDE

- Manuel head w/holding tank & deck pump out
- Sink
- Shower
- Opening port
- Lewmar opening ports
- Cabinets
- Lights

Dining

- Starboard side
- L-shape settee w/storage underneath
- Bench seating for 2
- Large dinette table
- Cabinets
- Opening port
- Over head hatch
- Lights and f

Galley

- 3 Burner stainless Eno marine propane stove with oven
- Double sink with hot and cold water
- Large top loading Frigomatic refrigerator and freezer
- Large storage area in counter
- Opening port
- 2 sky lights

Electrical Equipment

- Main DC panel (volt and water gauges)
- Main AC panel
- Main windlass control
- Sentrey battery charger.
- Ample Power energy monitor/controller
- 30 AMP shore power cord and inlet
- Raritan 12 gallon heater

- 3 battery sector switches

(2) group 24 batteries

Electronics

KVH Quatro

- Standard Horizon VHF

Mechanical

- 50 HP Perkins diesel hours
- Perkins instrument panel
- Westberke 4 kw generator with 274 hours
- Blower
- Racor filter
- Fresh water cooled

Remarks

The 40 Beneteau is designed for cruising performance and comfort. Handling lines is easy with a furling mainsail and genoa and all lines leading aft to a large aft cockpit. There are accommodations for 6, with a master stateroom forward, port stateroom aft plus master and quest head compartments.

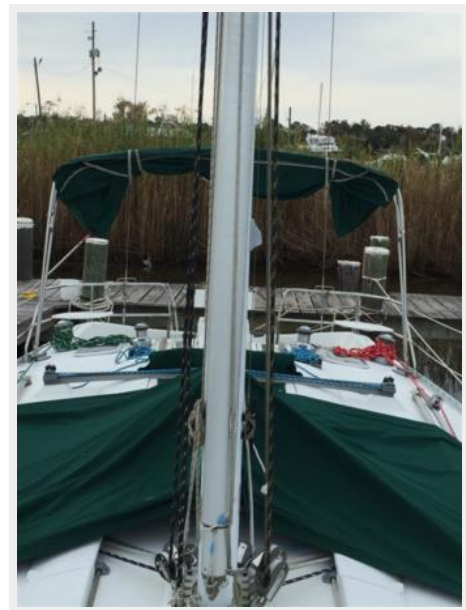
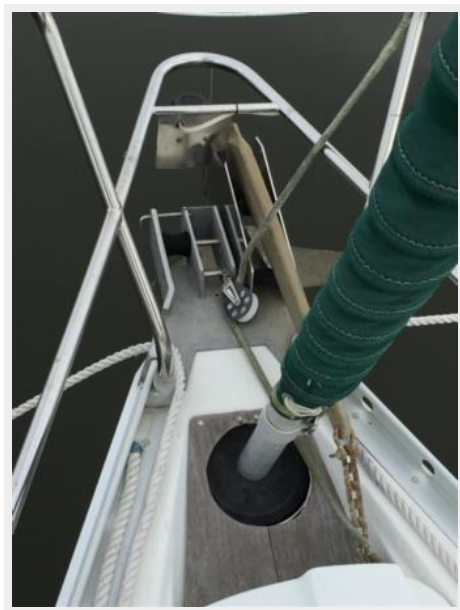
Exclusions

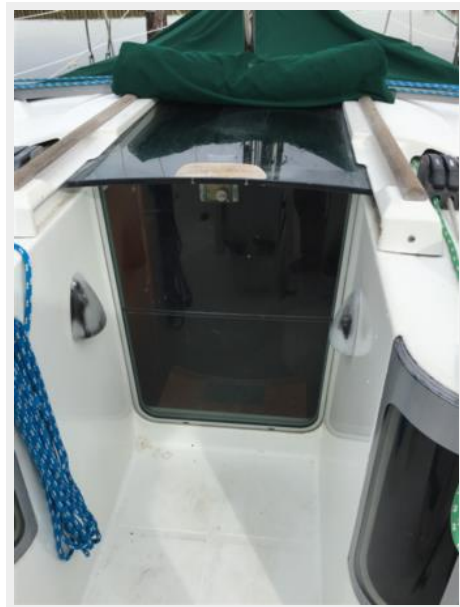
Owner's personal belongings.

Disclaimer

The Company offers the details of this vessel or yacht in good faith but cannot guarantee or warrant the accuracy of this information nor warrant the condition of the vessel. A buyer should instruct his representatives, agents, or his surveyors, to investigate such details as the buyer desires validated. This vessel or yacht is offered subject to prior sale, price change, or withdrawal without notice.

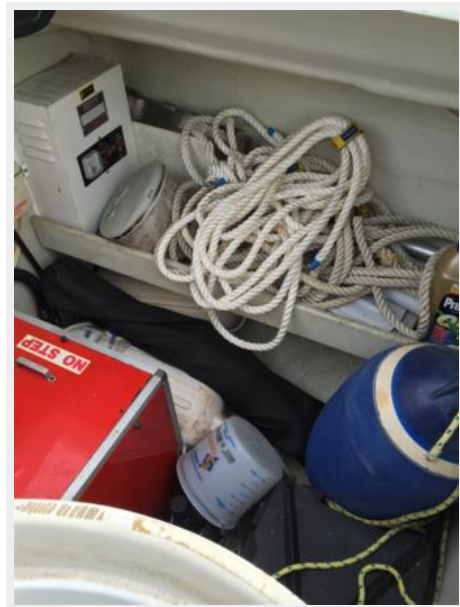
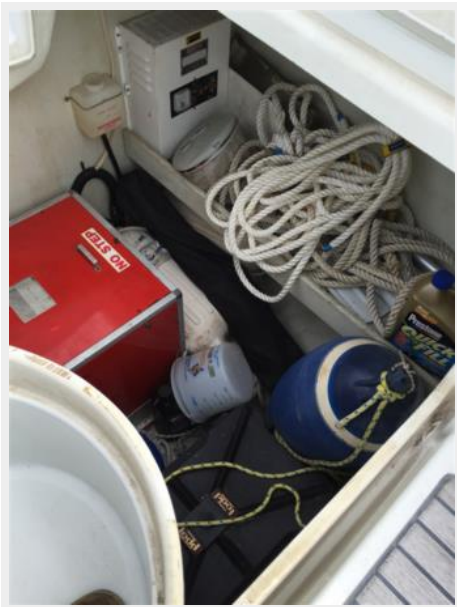
PHOTOS













CONTACTS

Andrey Shestakov, leading yacht broker of the sales department of Shestakov Yacht Sales Inc. Shestakov Yacht Sales Inc., the official representative of the Miami/Fort Lauderdale FL headquarters.

Contact details

Email: andrey@shestakovyachtsales.com

Web: shestakovyachtsales.com/en/

Telephones

USA: +1(954)274-4435

Office hours

Monday – Saturday: **9:00 - 21:00** EDT

Sunday: **closed**

Address



Harbour Towne Marina, 850 NE 3rd St,
STE 213, Dania, FL 33004