

JACQUELINE — OLIVER MARINE INTERNATIONAL



Судостроитель:

OLIVER MARINE INTERNATIONAL

Год постройки: 2000

Модель: Катамаран

Цена: ЦЕНА ЯХТЫ ПО ЗАПРОСУ

Местонахождение: United States

Длина общая: 50' 0" (15.24m)

Ширина: 18' 0" (5.49m)

Мин. осадка: 3' 9" (1.14m)

Макс. осадка: 3' 11" (1.19m)

Крейс. скорость: 20 Kts. (23 MPH)

Макс. скорость: 24 Kts. (28 MPH)

Купить **JACQUELINE — OLIVER MARINE INTERNATIONAL** а также выбрать подходящую вам яхту из нашего каталога яхт вам поможет опытный яхтенный брокер Андрей Шестаков. На сегодняшний день компания **Shestakov Yacht Sales Inc.** имеет большое количество яхт в собственном списке продаж, а также тесно сотрудничает со всеми крупными яхтенными производителями по всему миру.

Для того чтобы купить яхту **JACQUELINE — OLIVER MARINE INTERNATIONAL** а также проконсультироваться по любому вопросу связанному с покупкой, продажей, чартером яхт позвоните по телефону **+7(918)465-66-44**.

ОГЛАВЛЕНИЕ

ОГЛАВЛЕНИЕ	2
ХАРАКТЕРИСТИКИ	6
Основная информация	6
Размеры	6
Скорость, вместимость и масса	6
Размещение	7
Корпус и палуба	7
Информация о двигателе	7
ПОДРОБНОЕ ОПИСАНИЕ	8
Walkthrough	8
Salon	8
Galley	9
Starboard Side Hull Companionway	9
Master Cabin	9
Master Head	9
Crew Cabin	10
Portside Hull Companionway	10
Forward Guest Cabin	10
Port Guest Head	10
Captain's/Guest Cabin	11
Foredeck	11
Cockpit	11
Fishing Equipment	11
Flybridge	12
Helm Equipment	12
Port Engine Room	12
Starboard Engine Room	12
Electrical System	13

Hardtop Equipment	13
2015 Refit in Ft. Lauderdale	13
Remarks	14
Exclusions	14
Disclaimer	14
Исключения	14
Отказ от ответственности	14
ФОТОГРАФИИ	15
Salon Looking Forward	15
Salon to Starboard	15
Salon Aft to Starboard	15
Salon Starboard Side	15
Salon Dinette Forward	15
Galley to Port	15
Galley to Port	16
Starboard Side Fridge/Freezer	16
Salon to Port	16
Salon Looking Aft	16
Salon Aft to Port	16
Salon Aft to Starboard	16
Laminate Flooring Throughout Under Carpet	17
Starboard Side Stairs	17
Master Looking Forward	17
Master Looking Aft	17
Master Berth	17
Master Berth	17
Master Looking Aft	18
Master Head	18
Master Shower	18

Starboard Crew Cabin	18
Starboard Crew Berth Folded Down	18
Portside Steps	18
Portside Forward Cabin	19
Port Head	19
Portside Aft Cabin Looking Forward	19
Portside Aft Cabin Looking Aft	19
Portside Aft Cabin Berth Folded Down	19
Bow Area	19
Bow	20
Pulpit	20
Windlass Detail	20
Looking Aft	20
Shiny Gel Coat	20
Wide Side Deck	20
Stern Quarter	21
Cockpit	21
Portside Cockpit	21
Tackle Center	21
Tackle Center	21
Starboard Side Cockpit	21
Blue Water Chairs	22
Cockpit Looking Forward	22
Huge Cockpit	22
Stern Shot	22
Cockpit Visibility from Flybridge	22
EZ Access to Flybridge	22
Port Flybridge Seating	23
Starboard Flybridge Seating	23

Flybridge Looking Aft	23
Helm	23
Helm Chairs	23
Helm	23
Helm Detail	24
Helm Detail	24
Port Simrad Touch Screen	24
Starboard Simrad Touch Screen	24
Simrad AP/Plotter Controls	24
Hardtop Equipment	24
Port Engine Room Forward	25
Port Engine Room	25
Port Engine Room Aft	25
Starboard Engine Room Forward	25
Starboard Engine Room Aft	25
Main Electrical Panel	25
Bow	26
Bow Quarter	26
Side View	26
Stern Quarter	26
КОНТАКТЫ	27
Контактная информация	27
Телефоны	27
Время работы	27
Адрес	27

ХАРАКТЕРИСТИКИ

Основная информация

Тип судна: Катамаран	Подкатегория: Катер для спортивной рыбалки
Модельный год: 2000	Год постройки: 2000
Год обновления: 2015	Страна: United States
Верх: Hardtop	Открытая палуба мостика: Да
Кубрик: Да	

Размеры

Длина общая: 50' 0" (15.24m)	Длина по ватерлинии: 46' 0" (14.02m)
Длина палубы: 50' 0" (15.24m)	Ширина: 18' 0" (5.49m)
Мин. осадка: 3' 9" (1.14m)	Макс. осадка: 3' 11" (1.19m)

Скорость, вместимость и масса

Крейс. скорость: 20 Kts. (23 MPH)	Дальность на крейсерской скорости: 750
Макс. скорость: 24 Kts. (28 MPH)	Водоизмещение: 46000 Pounds
Чистый вес: 23 Pounds	Вместимость воды: 80 Gallons
Вместимость сточного бака: 60 Gallons	Объем топливного бака: 675 Gallons

Размещение

Всего кают: 3

Всего коек: 4

Спальные места: 6

Всего ком. состава: 2

Койки экипажа: 1

Корпус и палуба

Материал корпуса: Fiberglass

Материал палубы: Fiberglass

Комплектация корпуса: Катамаран

Цвет корпуса: white

Дизайнер корпуса: Wright

Дизайнер экстерьера: Wright

Дизайнер интерьера: Oliver Marine

Информация о двигателе

Двигатели: 2

Производитель: Cummins

Модель: 6BTA reman

Тип двигателя: Inboard

Тип топлива: Diesel

ПОДРОБНОЕ ОПИСАНИЕ

Walkthrough

Boarding JACQUELINE from a floating dock is via the swim platform and then through either the port or starboard transom doors. From a fixed dock there are cork step pads and a four step removable Marquipt ladder that can go on either the port or starboard side of the Cockpit interior.

The Cockpit is very spacious and easily accommodates a full size fighting chair, fishing chairs, trolling seats, a tackle center with freezer and a lower set of controls.

Molded steps to port lead to the Flybridge. A hinged door slightly to starboard enters the Cabin.

The Cabin is laid out with the Galley most aft followed by a built in sofa.

Furthest forward is a large U shaped settee to seat six to seven people with twin pedestal tables.

To both port and starboard are steps to below. To starboard is the Master Cabin forward with a raised athwartship queen size berth. Aft is a private head and shower followed by a Crew Cabin with a fold down berth and entrance to the starboard Engine Room.

The portside hull has a cabin with a double bed below and a single bed above. Next aft is a Head matching that to starboard followed by a cabin with a single berth that has a fold down section to make a double. The Port Engine Room is furthest aft.

Salon

Entered from the Cockpit via a hinged door, immediately to port is the Galley in an L shaped configuration with the refrigerator to starboard. The interior joinery is a satin finished cherry wood. See Galley equipment below.

Just forward of the starboard side refrigerator is a raised black leather sofa to seat two with a built in footrest.

Next forward is a raised cabinet (to make room for Head and Cabin below) with a large chart drawer and a smaller storage drawer facing inward and a fiddled wood storage shelf above and large side windows with one panel that slides open. Overhead is a rack for a dozen fishing rods.

Just forward of the port and starboard steps to the cabins is a six to seven person black leather upholstered settee facing aft. Twin stainless steel pedestal tables allow for dining and a matching black leather stool allows for extra seating.

Forward is an eight panel forward windshield that provides excellent ambient lighting.

A matching twelve place rod rack is to port, overhead.

Also in the Salon is a carpeted sole over a laminate wood flooring surface, five overhead dimmable LED lights, two digital AC controls, a 12 volt accessory outlet and the Salon's entertainment electronics including a Sony Brava 40" LED TV, a Fusion AM/FM/CD player, a Direct TV Sat receiver and a Sony wireless LAN system for Internet.

Galley

Immediately to port upon entering includes the following equipment:

Corian countertops Stainless steel under mount sink w/Corian cover Removable spray faucet Panasonic built in stainless steel Dimension 4 microwave/convection oven Force 10 Ceran top two burner cook top Nova Cool refrigerator/freezer Dedicated trash receptacle cabinet (5) Wood cabinet doors (6) Wood Galley storage drawers Long two sliding door cabinets above countertop Mr. Coffee coffeemaker (3) Overhead dimmable LED lights Large side windows with one opening panel Aft window slides open

Starboard Side Hull Companionway

Going four steps down and outboard just aft of the settee is the Starboard Hull Cabins. Forward is the Master Cabin, aft is the Head followed by the Engine Room.

Master Cabin

Going forward is the Master Cabin with a private door. Immediately upon entering is a two door storage cabinet with a cherry countertop. A Direct TV HD Sat receiver sits atop of the cabinet.

The berth itself is raised and runs athwartship. There are three steps that access the berth. Port and starboard reading lights. Two fixed dead lights, two small opening portholes and a large overhead deck hatch offer ambient lighting. Above are two multi bulb LED light fixtures.

Forward is a hanging locker with shelves within and a mirror on the exterior of the door. The carpet is removable covering a planked laminate sole.

An 19" Samsung LED TV on a swivel mount provides entertainment.

Master Head

Going aft behind a private door is the Master Head with a molded vanity and shower. The shower has a handheld or wall mountable fixture, a molded seat and a curtain enclosure. The toilet is an electric Raritan model. Also in the Head are overhead lights, an exhaust fan, a

mirrored medicine cabinet with cherry trim, a storage cabinet and a dead light to the Salon above.

Crew Cabin

Next aft behind a hinged door is the starboard Crew Cabin. The berth folds up to access the Passageway and the starboard Engine Room.

Also in this cabin is a U Line icemaker with a cherry front, three cherry cabinets presently used for engine spares, the fuel transfer system, two opening portholes, an LED reading light and an LED multi bulb fixture overhead light. The sole has removable carpet over a planked laminate flooring.

The Engine Room entrance is furthest aft.

Portside Hull Companionway

Going four steps down and outboard just aft of the settee are the Port Hull Cabins. Forward is a double Guest Cabin, aft is the Head and double Captain's or Guest Cabin followed by the Engine Room.

Forward Guest Cabin

Via a hinged cherry door is the Guest Cabin with a double door cabinet with a cherry shelf above immediately upon entering. A Direct TV HD Sat receiver sits atop the counter. Above is a 19" Samsung LCD TV on a hinged mount.

Forward is a large (almost double) single berth running forward. Above covering about 50% of the lower berth is a similar size upper berth also running forward. Each berth has an LED reading light. A large opening deck hatch above and an opening hull side port light offer light and ventilation. Both inboard and outboard of the cabin are hull side shelves for additional storage.

A multi bulb LED light fixture is above. The sole is planked laminate covered by a removable carpet.

Port Guest Head

Going aft behind a private door is the Port Guest Head with a molded vanity and shower. The shower has a handheld or wall mountable fixture, a molded seat and a curtain enclosure. The toilet is an electric Raritan models. Also in the Head are overhead lights, an exhaust fan, a mirrored medicine cabinet with cherry trim, a storage cabinet and a dead light to the Salon above.

Captain's/Guest Cabin

Next aft behind a private door is the Captain's or extra Guest Cabin. It consists of a fixed inboard single berth with a shelf above.

Folding down from the outboard Companionway is a companion berth that makes one large berth as needed.

When folded up there is easy access to the portside Engine Room.

Also in this cabin are two hull side opening portholes, a multi bulb LED overhead light fixture, a reading light and planked laminate sole with a removable carpet.

Foredeck

Fiberglass nonskid deck Centerline bow pulpit w/(2) anchor rollers Welded stainless steel bow rails Maxwell 2200 vertical windlass w/chain gypsea & rope capstan Up & down foot switches for windlass Stainless steel safety rails around windlass Mason 60 lb. plow anchor w/200' chain Deck hatches into port & starboard anchor lockers (2) Deck hatches, (1) small, (2) large Dual spring line cleats port & starboard LED International Navigation lights Remote spotlight Spacious walk around side decks Handrails at house sides

Cockpit

Cork decking (2015) over fiberglass deck (2) Cork covered molded steps port & starboard (2) Upholstered trolling seats port & starboard outboard with new cushions Fixed 24" sun shade by Pipewelders 2015 (2) Klipsch stereo speakers Life ring w/auto light Bell (2) 12 Volt accessory outlets one as a dual USB (2) Cork step pads port & starboard Fiberglass cabinet w/fresh & saltwater wash down Stainless steel hawse pipes w/Cockpit mounted cleats Scandvick hot & cold shower behind a hinged door on transom Integral swim platform w/cork decking 3 Step portable Cockpit boarding steps (2) Large deck hatches to access back of each Engine Room Oversize stainless steel deck drains (2) Large under deck lift out wells (8) Cork tread covered fiberglass steps to Flybridge Gaff storage in port pylaster cabinet Recessed under cover board lighting

Fishing Equipment

Full size Release Marine fighting chair w/cushions & cover Port & starboard walk through transom doors Centerline live well (2) Tuna tubes built into transom (10) Flush mount LEE rod holders 6 Place stainless steel rocket launcher on aft rail Rupp double spread outriggers (2015) Top loading stainless steel freezer 10 Place plastic drawer tackler locker behind fiberglass door (6) Tackle drawers behind fiberglass door Morse electronic back down controls (2) Penn teaser reels (3) LED Cockpit floodlights from hardtop Rupp center rigger

Flybridge

Fiberglass nonskid sole Stainless steel handrails on Flybridge access steps Stainless steel safety rail around Flybridge steps Stainless steel aft safety rail w/rocket launcher Fiberglass hardtop w/integrated arch 3 Side Sea Crylic enclosure by P & R Canvas 2015 One centerline U Zip Portside Flybridge seating & storage below w/new 2015 6" cushions L shaped starboard Flybridge seats & storage below w/new 2015 6" cushions Large centerline locker w/life jackets & safety gear 6 Man Revere life raft in valise in current inspection Stainless steel bottle holders Under helm cabinet (2) Overhead multi bulb LED lights Small overhead sun roof w/canvas cover (2) Kenwood stereo speakers Helm cover

Helm Equipment

(2) Bluewater Yachtman (Stidd type) helm chairs w/fold down footrests & covers, new 2015 Morse electronic engine controls (2) Simrad 15" touch screen monitors for radar/plotter/depth, new 2015 Simrad AP 28 autopilot, new 2015 Simrad OP40 control panel for monitors, new 2015 Simrad H5 90 handset type VHF w/DSC & AI's, new 2015 Simrad multi gauge for depth & speed, new 2015 Simrad remote VHF speaker Sea Fire fire system controls 12 Volt accessory outlet (2) Floscan digital & analog fuel logs Jandel Surface sea temp gauge (2) New 2015 Cummins gauge panels w/Aetna digital tachometer, water temp, oil pressure, voltage & transmission temp 5" Ritchie magnetic compass Storage locker under helm Helm electronics panel ACR 406 mghz EPIRB w/GPS Colsham Sat phone Sonic hub stereo

Port Engine Room

Cummins 370 HP engine remanufactured July 2015, 90 hours Racor 900 fuel filters Main engine sea cock & strainer Sea Fire 32 lb. auto/manual fire bottle Badger 10 lb. BC rated fire extinguisher Cummins heat exchanger expansion bottle Floscan system (2) Bilge pumps w/high water system Electronic engine controls Emergency fuel shutoff (outside Engine Room) Manual fire system pull cable (outside Engine Room) Air Sep crankcase ventilation system Integral fiberglass muffler Dripless shaft seals w/spare seal, new 2015 Shaft bonding straps Head Y valve to waste tank, or overboard ZA 220 A transmissions "Force 10" 10 gallon stainless steel water heater Rule live well pump Dometic AC supply cooling pump (2) New 16,000 BTU air conditioners (2015)

Starboard Engine Room

Cummins 370 HP engine remanufactured July 2015, 90 hours Racor 900 fuel filters Main engine sea cock & strainer Sea Fire 32 lb. auto/manual fire bottle Badger 10 lb. BC rated fire extinguisher Cummins heat exchanger expansion bottle Floscan system (2) Bilge pumps w/high water system Electronic engine controls Emergency fuel shutoff (outside Engine Room) Manual fire system pull cable (outside Engine Room) Air Sep crankcase ventilation system Integral

fiberglass muffler Dripless shaft seals w/spare seal, new 2015 Shaft bonding straps Head Y valve to waste tank, or overboard ZA 220 A transmissions Offshore Marine watermaker 500 GPD Generator muffler Generator exhaust/gas separator Saltwater wash down pump Generator coolant recovery bottle

Electrical System

12/24 Volt DC system 110/220 Volt AC system Group 31 battery for generator Blue Sea house battery shutoff switch Port start battery shutoff switch Starboard start battery shutoff switch (2) Parallel switches – port Engine Room Engine Room DC panel w/(16) breaker protected circuits AC control box w/automatic start booster (2) 8D AGM Life Line batteries Main shore power breaker (Starboard Engine Room) Fischer Panda 14 KW generator in sound shield, 837 hours Xanter remote charger panel Xanter 40 amp battery charger/inverter Fischer Panda remote gauge panel Offshore Marine Lab remote watermaker panel USB charging outlets throughout vessel KVH Tracvision built in control panel w/digital readout Main DC panel w/(21) breaker protected circuits & a digital voltmeter Holding tank Tank Watch monitor Main AC panel w/(21) breaker protected circuits & a digital volt & amp meter

Hardtop Equipment

KVH HD 7 Sat dome on custom mast (3) GPS antennas Simrad 4' open array radar antenna Rogue Wave WiFi booster (2) VHF antennas Sea Watch Terrestrial TV antenna Cradle Point router w/(4) G external antennas Sat phone dome - Sailor

2015 Refit in Ft. Lauderdale

New electronics & dash modifications	\$147,000	Cork Cockpit decks & installation	
\$ 21,225 New Cummins main engines		\$ 75,000 New engine installation	
\$ 12,000 Electrical work, rewiring		\$ 69,000 P & R Canvas, 3	
side enclosure new cushions	\$ 18,000	Pipewelders new outriggers & sunshade	\$ 27,600
Blue Water chairs, Flybridge & Cockpit	\$ 22,000	(2) New fire systems for Engine Room	
\$ 5700 New air conditioners		\$ 22,000 New Raritan toilets	
\$ 2400 Window tint, glass sealer, aluminum sealer		\$ 3700 Shipyard work	
Marinemax, Dania	\$117,000		\$542,625

Looking at this list many buyers would think this boat suffered some kind of trauma, IT DID NOT (!) The boat was purchased by an experienced yachtsman with the knowledge and resources to make her as new as possible. If you are looking for a 50' Power Cat, this is a very unique situation!

Remarks

Purchased in 2014 in California by a very experienced yachtsman, JACQUELINE was transformed in a 2015 refit costing over \$500K!

She shows like a much younger vessel. Her immense Cockpit will impress any fisherman or diving enthusiast.

Oliver Marine (NZ) has built several powercat sisterships, most of which were 46' long having a 4' shorter Cockpit.

Since her refit she has cruised to New England and back proving all of her new systems.

Exclusions

While every effort was made to list all pertinent included equipment aboard JACQUELINE, there are some personal belongings aboard. Prospective purchasers should assume any item not specifically mentioned herein will not convey at closing.

Disclaimer

The Company offers the details of this vessel in good faith but cannot guarantee or warrant the accuracy of this information nor warrant the condition of the vessel. A buyer should instruct his agents, or his surveyors, to investigate such details as the buyer desires validated. This vessel is offered subject to prior sale, price change, or withdrawal without notice.

Исключения

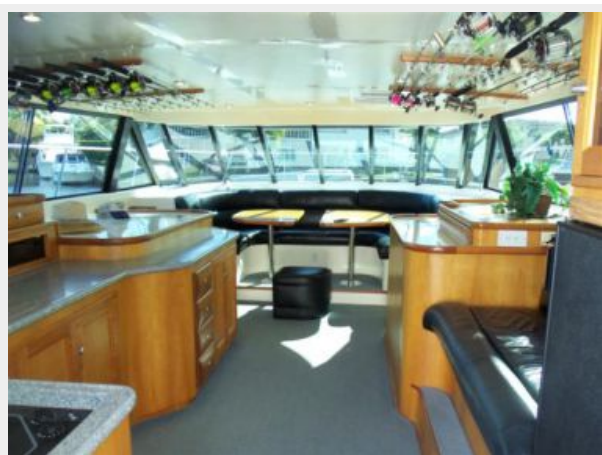
При продаже яхты исключаются личные вещи владельца.

Отказ от ответственности

Компания предоставляет описание судна или яхты добросовестно, но не может гарантировать точность этой информации, а также не ручается за техническое состояние. Покупатель должен проинструктировать своих агентов или оценщиков исследовать представленную информацию более подробно, по собственному желанию. Продажа судна или яхты, изменение цены или снятие с продажи будет происходить без предварительного уведомления.

ФОТОГРАФИИ

Salon Looking Forward



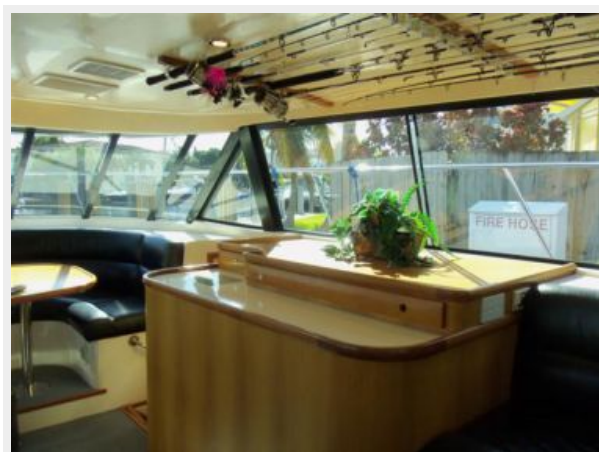
Salon to Starboard



Salon Aft to Starboard



Salon Starboard Side



Salon Dinette Forward



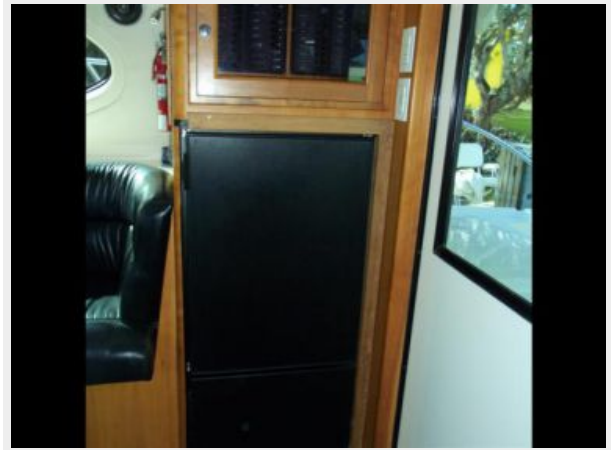
Galley to Port



Galley to Port



Starboard Side Fridge/Freezer



Salon to Port



Salon Looking Aft



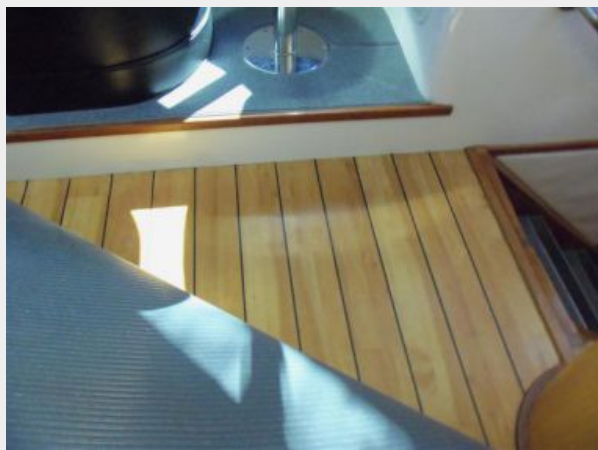
Salon Aft to Port



Salon Aft to Starboard



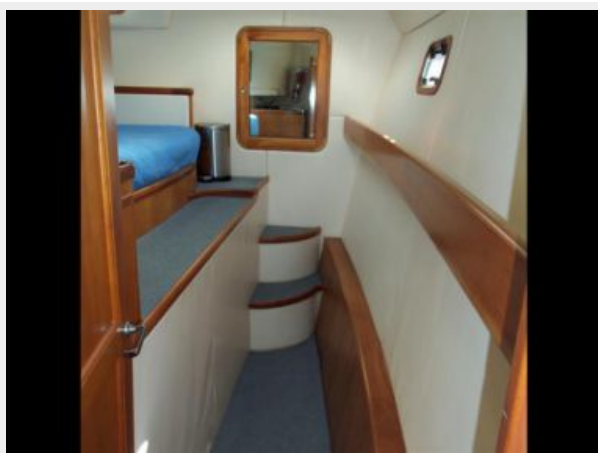
Laminate Flooring Throughout Under Carpet



Starboard Side Stairs



Master Looking Forward



Master Looking Aft



Master Berth



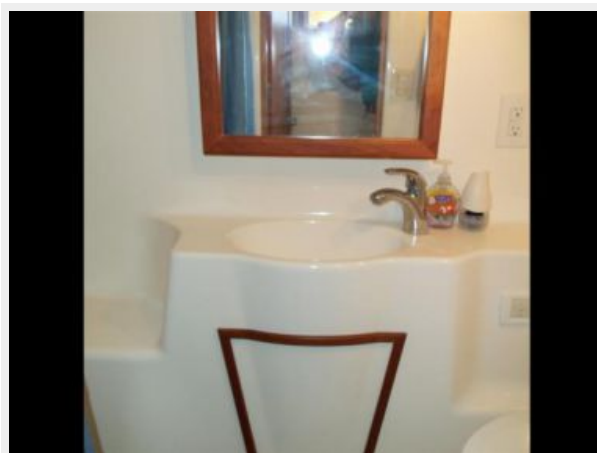
Master Berth



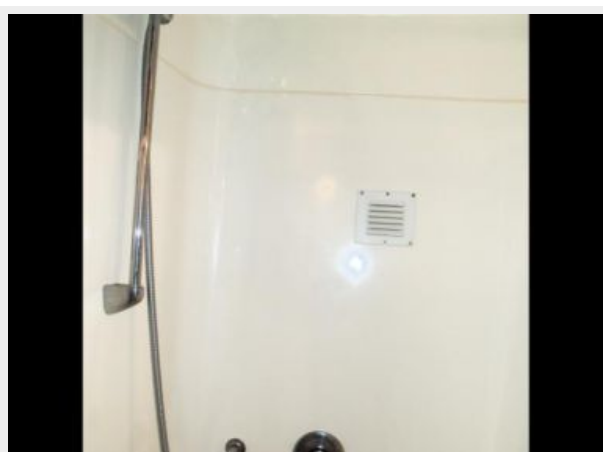
Master Looking Aft



Master Head



Master Shower



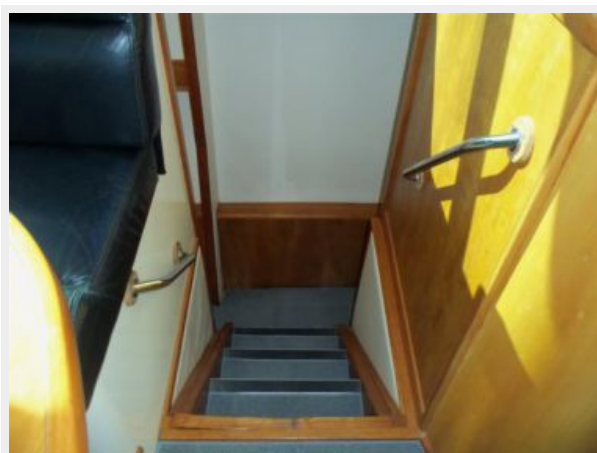
Starboard Crew Cabin



Starboard Crew Berth Folded Down



Portside Steps



Portside Forward Cabin



Port Head



Portside Aft Cabin Looking Forward



Portside Aft Cabin Looking Aft



Portside Aft Cabin Berth Folded Down



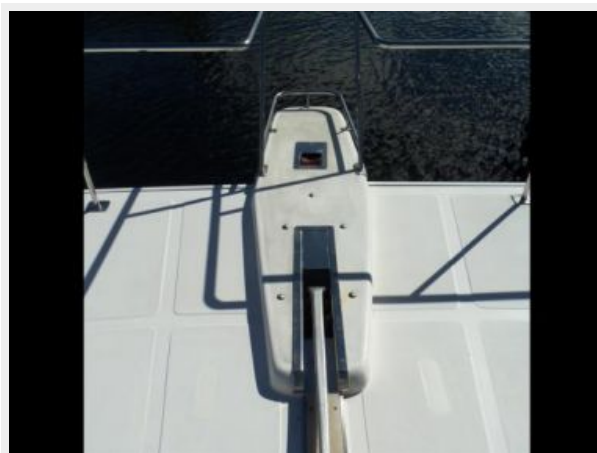
Bow Area



Bow



Pulpit



Windlass Detail



Looking Aft



Shiny Gel Coat



Wide Side Deck



Stern Quarter



Cockpit



Portside Cockpit



Tackle Center



Tackle Center



Starboard Side Cockpit



Blue Water Chairs



Cockpit Looking Forward



Huge Cockpit



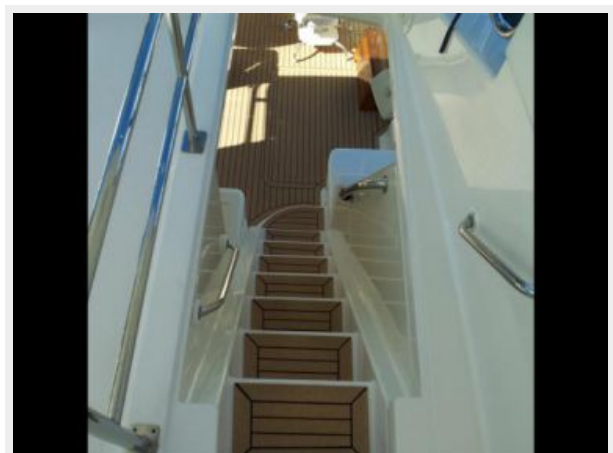
Stern Shot



Cockpit Visibility from Flybridge



EZ Access to Flybridge



Port Flybridge Seating



Starboard Flybridge Seating



Flybridge Looking Aft



Helm



Helm Chairs



Helm



Helm Detail



Helm Detail



Port Simrad Touch Screen



Starboard Simrad Touch Screen



Simrad AP/Plotter Controls



Hardtop Equipment



Port Engine Room Forward



Port Engine Room



Port Engine Room Aft



Starboard Engine Room Forward



Starboard Engine Room Aft



Main Electrical Panel



Bow



Bow Quarter



Side View



Stern Quarter



КОНТАКТЫ

Андрей Шестаков (Andrey Shestakov) – ведущий яхтенный брокер отдела продаж яхт и судов компании Shestakov Yacht Sales Inc. Официальный представитель Shestakov Yacht Sales Inc. для русскоговорящих клиентов в центральном офисе компании в Майами/Форт Лодердейл/Флорида/США.

Контактная информация

Email: andrey@shestakovyachtsales.com

Web: shestakovyachtsales.com

Телефоны

Краснодарский край: **+7(918)465-66-44**

США, Майами, Флорида: **+1(954)274-4435**

Время работы

Понедельник – Суббота: **9:00 - 21:00**
EDT

Воскресенье: **Закрито**

Адрес



Harbour Towne Marina, 850 NE 3rd St,
STE 213, Dania, FL 33004