

VITA — MAIORA



Builder: MAIORA

Year Built: 2008

Model: Motor Yacht

Price: PRICE ON APPLICATION

Location: United States

LOA: 77' 5" (23.60m)

Beam: 19' 0" (5.79m)

Max Draft: 5' 4" (1.63m)

Cruise Speed: 26 Kts. (30 MPH)

Max Speed: 32 Kts. (37 MPH)

Our experienced yacht broker, Andrey Shestakov, will help you choose and buy a yacht that best suits your needs **VITA — MAIORA** from our catalogue. Presently, at Shestakov Yacht Sales Inc., we have a wide variety of yachts available on our sale's list. We also work in close contact with all the big yacht manufacturers from all over the world.

If you would like to buy a yacht **VITA — MAIORA** or would like help answering any questions concerning purchasing, selling or chartering a yacht, please call **+1(954)274-4435**

TABLE OF CONTENTS

TABLE OF CONTENTS	2
SPECIFICATIONS	4
Basic Information	4
Dimensions	4
Speed, Capacities and Weight	4
Accommodations	4
Hull and Deck Information	4
Engine Information	5
DETAILED INFORMATION	6
Accommodations	6
Construction	6
Deck Equipment	6
Extra Features	6
Galley Equipment	7
Engines & Machinery	8
Navigation Equipment	8
Entertainment Equipment	8
Exclusions	9
Disclaimer	9
PHOTOS	10
Aft Deck	10
Main Salon	10
Main Salon	10
Dining	10
Pilothouse	10
Galley	10
Master Stateroom	11
Master Bathroom	11

VIP Stateroom	11
VIP Bathroom	11
Twin Guest Stateroom	11
Guest Corridor	11
Bow Sunpad	12
Flybridge	12
Flybridge	12
Flybridge Grill	12
Layout	12
Engine Room	12
CONTACTS	13
Contact details	13
Telephones	13
Office hours	13
Address	13

SPECIFICATIONS

Basic Information

Category: Motor Yacht

Model Year: 2008

Year Built: 2008

Country: United States

Fly Bridge: Yes

Dimensions

LOA: 77' 5" (23.60m)

Beam: 19' 0" (5.79m)

Max Draft: 5' 4" (1.63m)

Speed, Capacities and Weight

Cruise Speed: 26 Kts. (30 MPH)

Max Speed: 32 Kts. (37 MPH)

Water Capacity: 489 Gallons

Fuel Capacity: 2272 Gallons

Accommodations

Total Cabins: 4

Sleeps: 8

Hull and Deck Information

Hull Material: Fiberglass

Deck Material: Teak

Hull Designer: Maiora

Interior Designer: Maiora

Engine Information

Engines: 2

Manufacturer: Caterpillar

Model: C-32

Engine Type: Inboard

Fuel Type: Diesel

DETAILED INFORMATION

Accommodations

Master Cabin: 1 double cabin with en-suite bathroom located amidships

VIP Cabin: 1 double cabin with en-suite bathroom located forward

Guest Cabin: 2 twin cabins with en-suite bathroom each (additional Pullman each)

Crew Cabin: 1 cabin with triple bunks and en-suite bathroom located at the bow

Construction

Hull: GRP, Awlgrip white finish

Superstructure: GRP, Awlgrip white finish

Interior Finish: Natural Oak and Wengè

Deck Equipment

Cockpit: Teak

Stern platform: Teak

Sun Cushions: full set

Winch: 1x LOFRANS Titan B 2000W anchor windlass

Capstans: 2x LOFRANS 1300W aft mooring capstans

Extra Features

NAIAD Fin Stabilizers

Ultraleather for ceilings

Flybridge hard-top with radar arch and electrical installation for lighting

Foredeck tender garage with hydraulic hatch and crane

Teak on the flybridge

Hydraulic bow + stern thrusters (28hp each)

Anti-burglar alarm system with code panel, sensors and acoustic-visual alarm on radar arch

CCTV surveillance system

Portholes alarm

Smoke detector system

Additional Pullman beds in twin cabins

Domotic system with tactile screen control

Additional folding mooring bitts on the stern platform

FURUNO radar + plotter additional display on the flying bridge

TV on the flying bridge with up/down mechanism

Washing machine

Dryer

Foldable crane on aft platform for jet ski launch

Electric roman-type curtains on main and lower decks

Centralized Vacuum Cleaner – located in aft lazarette (AERTECNICA CH150P)

4x Underwater Lights

Backlit stern name

Glendinning Cablemaster shore power – Mod. CM7

Yacht Controller (wireless boat control)

Galley Equipment

Cooking Top: MIELE

Refrigerator: GENERAL ELECTRIC US-style

Dishwasher: MIELE

Oven: MIELE

Trash Compactor

Icemaker on the Main Deck

Icemaker on the Flybridge

Engines & Machinery

2x CATERPILLAR C32 DITA 1670hp. (1232kW) @ 2300rpm

Engine hours 1729 hr Starboard – 1720 hr Port (Feb. 2nd 2016)

Generators 2x ONAN 25kW @ 1800rpm 120v - 240v - 60Hz

Generator hours 3176 hr Starboard – 3158hr Port (Feb. 2nd 2016)

Bow thrusters (Hydraulic) 28Hp

Stern thrusters (Hydraulic) 28Hp

Stabilizers NAIAD fin stabilizers

Air Conditioning 120,000BTU (Nr. 4 compressors 2.5Hp)

Watermaker IDROMAR MC3J 180Lt/hr (47 US gal/hr)

Navigation Equipment

Autopilot FURUNO – FAP 5001

VHF FURUNO – FM 2721

SSB FURUNO – FS 2570C

GPS FURUNO – GD 1920C BB + HATTELAND 10" display

Radar FURUNO – M 1944C BB + HATTELAND 10" display

Echosounder FURUNO – Network Sounder DFF1

Meteofax FURUNO – FAX 408

Entertainment Equipment

Audio Video system BOSE

TV saloon 50" Samsung LED TV

Satellite TV SEATEL

TV in the aft cockpit

Exclusions

Owner's personal belongings.

Disclaimer

The Company offers the details of this vessel or yacht in good faith but cannot guarantee or warrant the accuracy of this information nor warrant the condition of the vessel. A buyer should instruct his representatives, agents, or his surveyors, to investigate such details as the buyer desires validated. This vessel or yacht is offered subject to prior sale, price change, or withdrawal without notice.

PHOTOS

Aft Deck



Main Salon



Main Salon



Dining



Pilothouse



Galley



Master Stateroom



Master Bathroom



VIP Stateroom



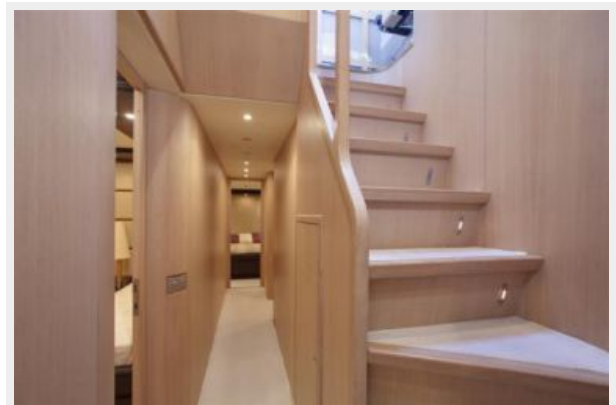
VIP Bathroom



Twin Guest Stateroom



Guest Corridor



Bow Sunpad



Flybridge



Flybridge



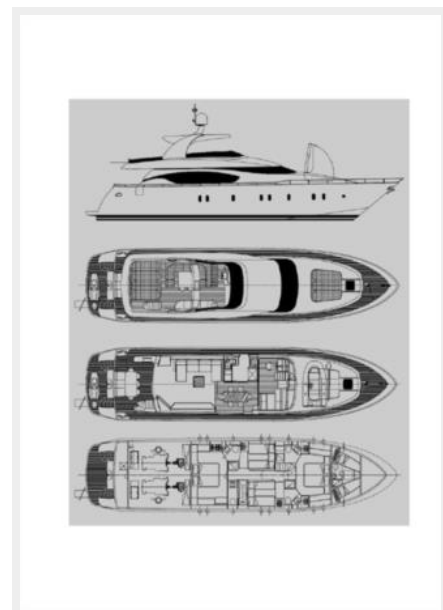
Flybridge Grill



Engine Room



Layout



CONTACTS

Andrey Shestakov, leading yacht broker of the sales department of Shestakov Yacht Sales Inc. Shestakov Yacht Sales Inc., the official representative of the Miami/Fort Lauderdale FL headquarters.

Contact details

Email: andrey@shestakovyachtsales.com

Web: shestakovyachtsales.com/en/

Telephones

USA: +1(954)274-4435

Office hours

Monday – Saturday: **9:00 - 21:00** EDT

Sunday: **closed**

Address



Harbour Towne Marina, 850 NE 3rd St,
STE 213, Dania, FL 33004