

JANET L II — CALYBER



Builder: CALYBER

LOA: 35' 0" (10.67m)

Year Built: 2010

Model: Cruiser

Price: PRICE ON APPLICATION

Location: United States

Our experienced yacht broker, Andrey Shestakov, will help you choose and buy a yacht that best suits your needs Janet L II — CALYBER from our catalogue. Presently, at Shestakov Yacht Sales Inc., we have a wide variety of yachts available on our sale's list. We also work in close contact with all the big yacht manufacturers from all over the world.

If you would like to buy a yacht Janet L II — CALYBER or would like help answering any questions concerning purchasing, selling or chartering a yacht, please call +1(954)274-4435

TABLE OF CONTENTS

TABLE OF CONTENTS	2
SPECIFICATIONS	3
Overview	3
Basic Information	3
Dimensions	3
Hull and Deck Information	3
Engine Information	3
DETAILED INFORMATION	4
Engines	4
Electronics	4
Hull and Deck	4
Cabin	4
Dimensions	5
Exclusions	5
Disclaimer	5
PHOTOS	6
CONTACTS	17
Contact details	17
Telephones	17
Office hours	17
Address	17

SPECIFICATIONS

Overview

Calyber's design employs an extreme warped-plane running surface combined with classic Carolina hull lines. But while it might look totally traditional, don't judge this boat by its cover. Epoxy resins for ultimate durability, vacuum-bagged and resin-infusion construction makes this boat not only very solid but adds to its longevity as well. The simple interior boasts exquisite joiner work and hardwood veneers. With the Volvo IPS 500 this boat performs like a sport's car with an economical fuel burn as well. The joystick control in the cockpit makes backing down on a fish not only easy but exciting as well.

MB

Basic Information

Category: Cruiser

Sub Category: Express

Model Year: 2010

Year Built: 2010

Country: United States

Dimensions

LOA: 35' 0" (10.67m)

Hull and Deck Information

Hull Material: Fiberglass

Engine Information

Engines: 2

Manufacturer: Volvo Penta

Model: 500 IPS

Engine Type: Inboard

Fuel Type: Diesel

DETAILED INFORMATION

Engines

- Twin Volvo Penta IPS 500 370 HP W/ 700 hours
- Joy Stick control at lower helm and in cockpit
- Generator - Kohler 6KW 132 hours
- AGM Batteries House and Start

Electronics

- Two Raymarine G Series Plotters at lower helm
- Raymarine G Series at tower
- Raymarine HD radar
- Icom M 504 VHF with remote in tower station
- Raymarine ST 70 Auto Pilot both stations
- Flir Night Vision
- Stereo with Sirius Radio

Hull and Deck

- Windlass
- Transom Tuna Door with Dive Ladder
- Out Riggers with Two Spreaders
- Cold Plate in cockpit
- Rocket Launcher in cockpit
- Fresh and Salt Water faucets
- Fish Box in deck
- Spreader Lights
- Overhead Rod Storage at Helm 3 Compartments
- Bait Prep with Sink

Cabin

Refrigerator

Micro Wave Oven

- Two Burner Stove
- Flat Screen TV
- Hotwater Heater

- Pompanette Air Conditioner with Heat
- LED Lighting Through Out
- Teak and Holly Flooring
- Fresh Water Flush Tiolet
- Shower

Dimensions

- Length 35' - 4"
- Beam 12' - 6"
- Draft 3' - 4"
- Weight 19,400 lb.
- Deadrise 13 Deg.
- Water 40 Gal.
- Fuel 350 Gal.

Exclusions

Owner's personal belongings.

Disclaimer

The Company offers the details of this vessel or yacht in good faith but cannot guarantee or warrant the accuracy of this information nor warrant the condition of the vessel. A buyer should instruct his representatives, agents, or his surveyors, to investigate such details as the buyer desires validated. This vessel or yacht is offered subject to prior sale, price change, or withdrawal without notice.

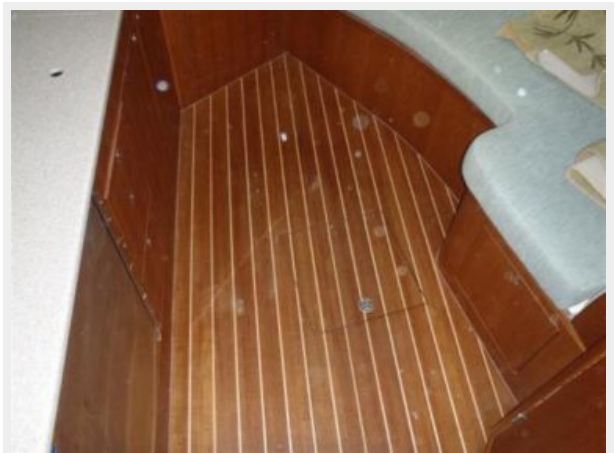
PHOTOS

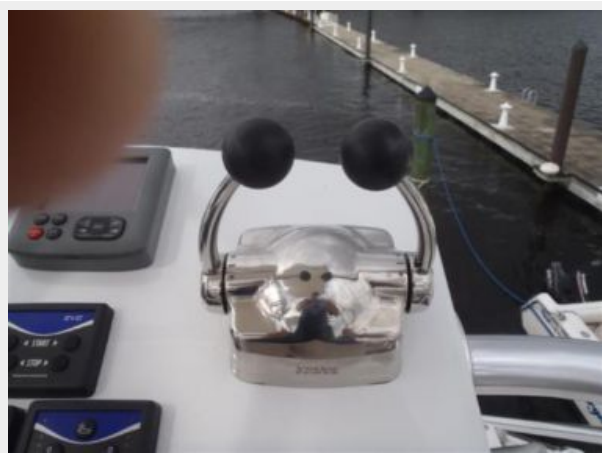
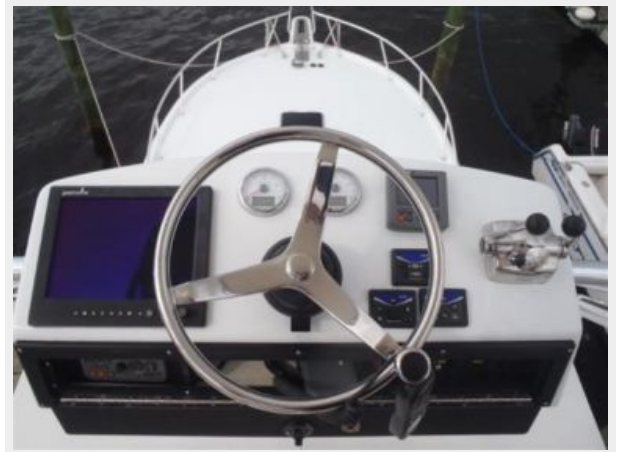








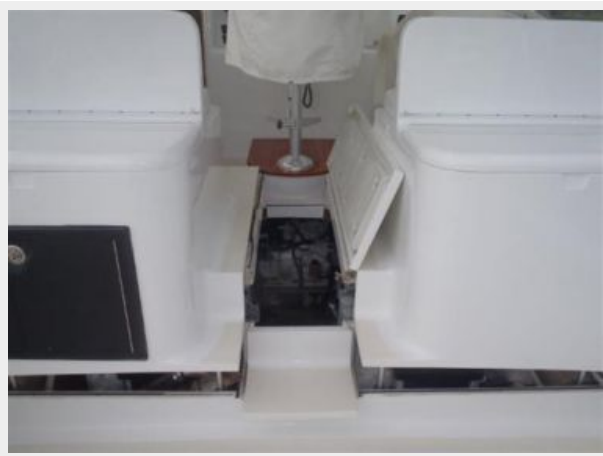
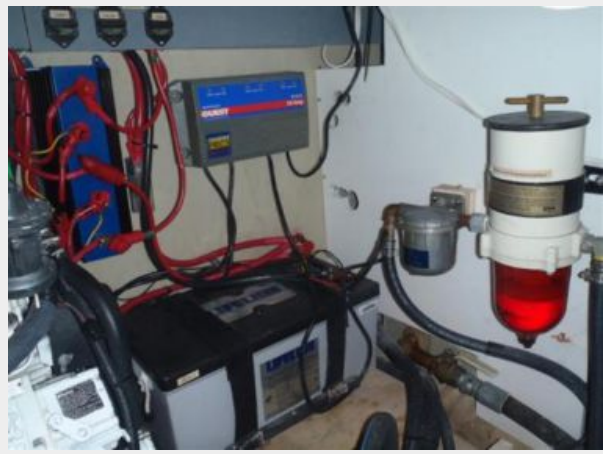














CONTACTS

Andrey Shestakov, leading yacht broker of the sales department of Shestakov Yacht Sales Inc. Shestakov Yacht Sales Inc., the official representative of the Miami/Fort Lauderdale FL headquarters.

Contact details

Email: andrey@shestakovyachtsales.com

Web: shestakovyachtsales.com/en/

Telephones

USA: +1(954)274-4435

Office hours

Monday – Saturday: **9:00 - 21:00** EDT

Sunday: **closed**

Address



Harbour Towne Marina, 850 NE 3rd St,
STE 213, Dania, FL 33004