

## ANOTHER ADVENTURE — GULFSTAR



**Builder:** GULFSTAR

**Year Built:** 1982

**Model:** Center Cockpit

**Price:** PRICE ON APPLICATION

**Location:** United States

**LOA:** 44' 0" (13.41m)

**Beam:** 13' 2" (4.01m)

**Max Draft:** 5' 6" (1.68m)

Our experienced yacht broker, Andrey Shestakov, will help you choose and buy a yacht that best suits your needs **Another Adventure — GULFSTAR** from our catalogue. Presently, at Shestakov Yacht Sales Inc., we have a wide variety of yachts available on our sale's list. We also work in close contact with all the big yacht manufacturers from all over the world.

If you would like to buy a yacht **Another Adventure — GULFSTAR** or would like help answering any questions concerning purchasing, selling or chartering a yacht, please call **+1(954)274-4435**

---

# TABLE OF CONTENTS

---

TABLE OF CONTENTS	2
SPECIFICATIONS	5
Overview	5
Basic Information	5
Dimensions	5
Speed, Capacities and Weight	6
Accommodations	6
Hull and Deck Information	6
Engine Information	6
DETAILED INFORMATION	7
Accommodations	7
Galley	7
Electrical Equipment	7
Electronics	8
Deck & Hull	8
Sails and Rigging	8
Mechanical, Plumbing	8
Safety	8
Exclusions	9
Disclaimer	9
PHOTOS	10
Cruising somewhere	10
On the road	10
port	10
starboard	10
stern	10
ready for winter	10
bow	11

---

anchor	11
cockpit1	11
companionway	11
helm instruments	11
bow roller	11
cockpit aft	12
mid-ship chock	12
davits	12
solar panel	12
port dinette	12
port dinette2	12
main cabin forward	13
starboard settee	13
starboard aft	13
starboard settee	13
aft cabin2	13
nav station	13
aft cabin2	14
aft head1	14
aft shower	14
aft cabin lockers	14
walkthru lockers	14
cabin sole	14
bilge	15
engine room door	15
engine	15
clean engine room	15
forward cabin1	15
forward cabin vanity	15

---

---

forward cabin	16
v-berth	16
galley1	16
galley2	16
stove	16
new ports	16
<b>CONTACTS</b>	<b>17</b>
Contact details	17
Telephones	17
Office hours	17
Address	17

---

# SPECIFICATIONS

---

## Overview

---

A well-maintained 80s vintage Gulfstar is widely considered to be among the best values in a cruising sailboat. *Another Adventure* is a perfect example. She is beautifully maintained, well equipped, nice looking, a good performer, has a solid fiberglass hull, with spacious & comfortable accommodations. You will be hard pressed to find a more capable cruising boat in this condition and size, at this price level.

*Another Adventure* has enjoyed exceptional care by experienced owners. She has been a New England boat for many years where she is tucked away under cover each Winter. Never chartered, no history of blisters, constantly pampered and updated. In the words of a recent insurance survey... "This survey concludes that this vessel has been very well maintained and is in exceptionally good condition overall..."

Some of her recent updates include:

New standing rigging New canvas w/ full enclosure Updated electronics New gearbox New refrigeration New SS opening ports New Barrier Paint applied to bottom Bilges cleaned & painted and more.

Call for details.

---

## Basic Information

---

**Category:** Center Cockpit

**Sub Category:** Cruising Sailboat

**Model Year:** 1982

**Year Built:** 1982

**Country:** United States

---

## Dimensions

---

**LOA:** 44' 0" (13.41m)

**LWL:** 35' 6" (10.82m)

**Beam:** 13' 2" (4.01m)

**Max Draft:** 5' 6" (1.68m)

---

## Speed, Capacities and Weight

---

**Displacement:** 26000 Pounds

**Water Capacity:** 160 Gallons

**Holding Tank:** 30 Gallons

**Fuel Capacity:** 80 Gallons

---

## Accommodations

---

**Total Cabins:** 2

---

## Hull and Deck Information

---

**Hull Material:** Fiberglass

**Deck Material:** Fiberglass Sandwich

**Hull Configuration:** Fin & Skeg

**Hull Color:** white

---

## Engine Information

---

**Engines:** 1

**Manufacturer:** Perkins

**Model:** 4-108

**Engine Type:** Inboard

**Fuel Type:** Diesel

---

# DETAILED INFORMATION

---

## Accommodations

---

**Another Adventure** features a well appointed teak interior. Bulkheads are oiled and trim is varnished, all in excellent condition. The cabin features a recently varnished Teak & Holly cabin sole throughout. Ventilation is excellent with 5 opening deck hatches and 8 opening port lights, as well as 4 dorade vents. All port lights have been replaced with stainless steel ports by AllMetal. Cabin lighting has been updated with new energy-efficient LED bulbs.

**STARTING FORWARD:** Large V-berth forward with storage under. Double hanging locker to starboard, hanging locker with lower drawers to port. The Forward Head is aft to port. SST Vanity, shower w/ sump, Y-valve to holding tank or overboard, ample storage. Aft to starboard is a large storage locker with counter. The Main Cabin features an L-shaped settee to port with settee seating to starboard. Both settees convert to double berths. Teak Lockers and shelving outboard of settees. Centerline drop leaf dining table.

Large U-shaped galley is aft to port with nav station to starboard. The walkthrough to the aft cabin is starboard, featuring massive storage lockers outboard and access to the engine compartment inboard. The engine compartment is a thing of beauty. It is roomy, remarkably clean, and well organized. It houses boat systems including the newly painted Perkins diesel, H/W heater, refrigeration compressor, inverter/charger, water & bilge pumps, batteries and more. All easily accessible for service.

The aft Master Cabin features a large king size berth that will accommodate both for/aft sleeping and athwartship. There is a center cushion to fill in space between port & starboard extensions. Ample storage under berth. The large ensuite head features a separate shower stall. Several opening ports and a large overhead hatch provide excellent ventilation and light.

## Galley

---

3-burner Shipmate LPG stove & oven (tank locker accessed from aft deck) Large icebox with 12V refrigeration by Super Cold Machine **2015** Double SST sink with H/C pressure water and backup foot pumps 12 gallon Raritan H/W tank 160 gallons Fresh Water capacity Massive storage capacity and counter space.

## Electrical Equipment

---

Batteries: One 8D Starting Battery in engine compartment Two AGM 12V Two 6V in series Battery wiring replaced **2015** 30 Amp AC power 1000W Inverter/Charger by Heart Interface Simpson Lawrence 12V windlass on fordeck Two electric bilge pumps (one automatic, one manual) Renogy Solar Panels mounted over the dinghy davits

## Electronics

---

Standard Horizon CP500 Chartplotter at helm (2013) Datamarine Depth Datamarine Speed/Distance Datamarine Wind Autohelm belowdecks autopilot Standard Horizon Matrix GX2150 VHF with AIS, linked to plotter (2013) Standard Horizon Remote Mic at the helm

## Deck & Hull

---

Solid fiberglass hull with original gelcoat in good condition Long fin keel with skeg hung rudder Bottom recently soda-blasted and 2-3 layers of barrier coat applied **2014** No history of blisters **Decks** are balsa cored with molded light grey non-skid starting forward: Single bow roller forward **Ground Tackle:** Simpson Lawrence Electric Windlass with foot switch Large Rocna-style anchor w/40' 5/16 chain lead + 200' of nylon Large Danforth anchor stored in Lazarette on aft deck 30" high double lifelines w/ Port & Starboard boarding gates 5 opening hatches 8 opening port lights (all replaced with stainless steel ports) 4 dorade boxes w/ chrome cowl vents Deck washdown mid-ship port side Mid-ships mooring chocks & cleats Forespar Dinghy davits, with solar panel mounted over Novalift outboard motor crane mounted aft Teak outboard motor mount on stern rail SST swim ladder on transom **Cockpit:** Roomy center cockpit with accommodations for up to 8. Wheel steering Morse controls for the engine Varnished teak drop-leaf cockpit table teak pedestal mounted drink holder Full canvas enclosure (dodger, bimini & side curtains) 2011 Cockpit cushions Varnished teak companionway washboards Canvas helm cover All Exterior Teak is finished with Cetol covered with 2-3 coats of Cetol Clear. All brightwork in excellent condition.

## Sails and Rigging

---

Keel-stepped double-spreader masthead sloop rig All spars painted off-white SST 7/16" 1x19 wire standing rigging replaced **2011** Schaeffer System 3100 Jib Furler Firdell Radar Reflector mounted on mast Tri-color masthead light **Winches:** Two Barient 32 primaries Three Barient 21 Halyard & Sheeting winches One Barient 10H **Sails:** Dacron Main 135% Genoa on furler

## Mechanical, Plumbing

---

Perkins 4-108 50hp diesel 1982 freshly painted and spotless New starter motor **2015** New Hurth Gearbox **2015** Hours are unknown because meter has been reported to register when the engine is off. Racor fuel/water separator/filter Balmar ALS-5 Advanced Regulator Line spurs on prop shaft New 3-bladed fixed prop

## Safety

---

**Safety Equipment:** Rail-mounted MOB/LifeSling 406 Mhz ePirb 3 portable Fire



---

Extinguishers 2 fixed Fire Exinguishers (engine compt.) Firdell Radar Reflector Horseshoe Buoy

## Exclusions

---

Owner's personal belongings.

## Disclaimer

---

The Company offers the details of this vessel or yacht in good faith but cannot guarantee or warrant the accuracy of this information nor warrant the condition of the vessel. A buyer should instruct his representatives, agents, or his surveyors, to investigate such details as the buyer desires validated. This vessel or yacht is offered subject to prior sale, price change, or withdrawal without notice.

# PHOTOS

**Cruising somewhere**



**On the road**



**port**



**starboard**



**ready for winter**



**stern**



**bow**



**anchor**



**cockpit1**



**companionway**



**helm instruments**



**bow roller**





**cockpit aft**



**mid-ship chock**



**davits**



**solar panel**



**port dinette**



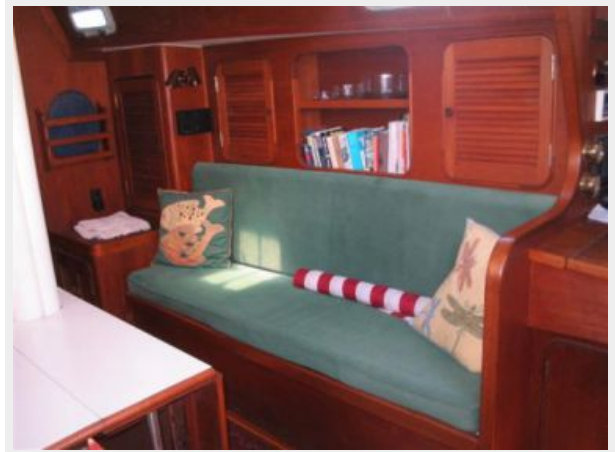
**port dinette2**



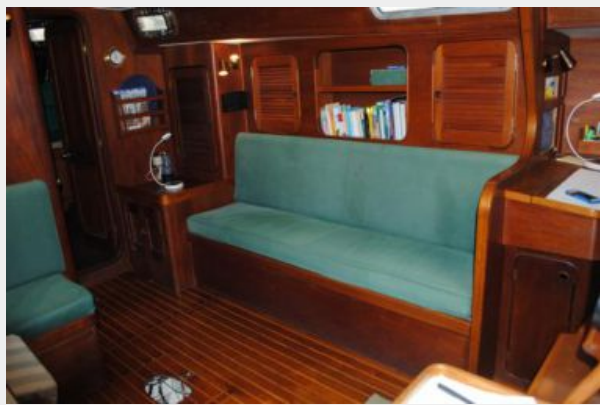
**main cabin forward**



**starboard settee**



**starboard settee**



**starboard aft**



**nav station**



**aft cabin2**





**aft cabin2**



**aft head1**



**aft shower**



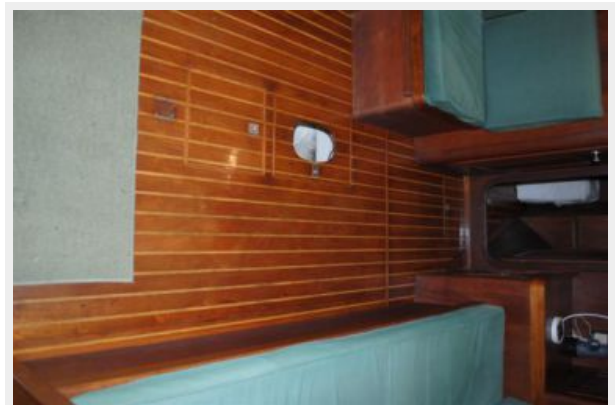
**aft cabin lockers**



**walkthru lockers**



**cabin sole**



**bilge**



**engine room door**



**engine**



**clean engine room**



**forward cabin1**



**forward cabin vanity**





**forward cabin**



**v-berth**



**galley1**



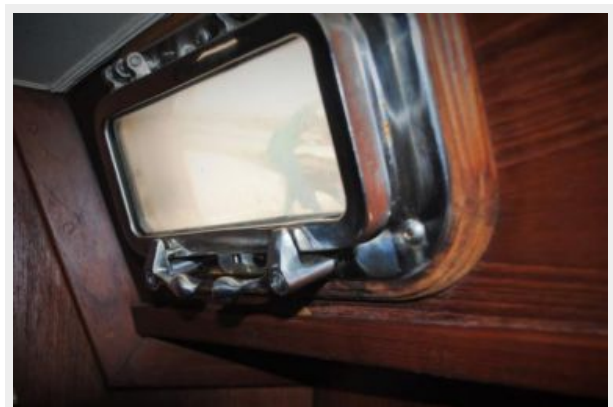
**galley2**



**stove**



**new ports**





---

# CONTACTS

---

Andrey Shestakov, leading yacht broker of the sales department of Shestakov Yacht Sales Inc. Shestakov Yacht Sales Inc., the official representative of the Miami/Fort Lauderdale FL headquarters.

---

## Contact details

---

Email: **andrey@shestakovyachtsales.com**

Web: [shestakovyachtsales.com/en/](http://shestakovyachtsales.com/en/)

---

## Telephones

---

USA: +1(954)274-4435

---

## Office hours

---

Monday – Saturday: **9:00 - 21:00** EDT

Sunday: **closed**

---

## Address

---



Harbour Towne Marina, 850 NE 3rd St,  
STE 213, Dania, FL 33004