

## ANOTHER ADVENTURE — GULFSTAR



**Судостроитель:** GULFSTAR

**Год постройки:** 1982

**Модель:** Center Cockpit

**Цена:** ЦЕНА ЯХТЫ ПО ЗАПРОСУ

**Местонахождение:** United States

**Длина общая:** 44' 0" (13.41m)

**Ширина:** 13' 2" (4.01m)

**Макс. осадка:** 5' 6" (1.68m)

Купить **Another Adventure — GULFSTAR** а также выбрать подходящую вам яхту из нашего каталога яхт вам поможет опытный яхтенный брокер Андрей Шестаков. На сегодняшний день компания **Shestakov Yacht Sales Inc.** имеет большое количество яхт в собственном списке продаж, а также тесно сотрудничает со всеми крупными яхтенными производителями по всему миру.

Для того чтобы купить яхту **Another Adventure — GULFSTAR** а также проконсультироваться по любому вопросу связанному с покупкой, продажей, чартером яхт позвоните по телефону **+7(918)465-66-44**.

# ОГЛАВЛЕНИЕ

ОГЛАВЛЕНИЕ	2
ХАРАКТЕРИСТИКИ	5
Обзор	5
Основная информация	5
Размеры	5
Скорость, вместимость и масса	6
Размещение	6
Корпус и палуба	6
Информация о двигателе	6
ПОДРОБНОЕ ОПИСАНИЕ	7
Accommodations	7
Galley	7
Electrical Equipment	7
Electronics	8
Deck & Hull	8
Sails and Rigging	8
Mechanical, Plumbing	8
Safety	8
Исключения	9
Отказ от ответственности	9
ФОТОГРАФИИ	10
Cruising somewhere	10
On the road	10
port	10
starboard	10
stern	10
ready for winter	10
bow	11

anchor	11
cockpit1	11
companionway	11
helm instruments	11
bow roller	11
cockpit aft	12
mid-ship chock	12
davits	12
solar panel	12
port dinette	12
port dinette2	12
main cabin forward	13
starboard settee	13
starboard aft	13
starboard settee	13
aft cabin2	13
nav station	13
aft cabin2	14
aft head1	14
aft shower	14
aft cabin lockers	14
walkthru lockers	14
cabin sole	14
bilge	15
engine room door	15
engine	15
clean engine room	15
forward cabin1	15
forward cabin vanity	15

---

forward cabin	16
v-berth	16
galley1	16
galley2	16
stove	16
new ports	16
<b>КОНТАКТЫ</b>	<b>17</b>
Контактная информация	17
Телефоны	17
Время работы	17
Адрес	17

# ХАРАКТЕРИСТИКИ

## Обзор

A well-maintained 80s vintage Gulfstar is widely considered to be among the best values in a cruising sailboat. *Another Adventure* is a perfect example. She is beautifully maintained, well equipped, nice looking, a good performer, has a solid fiberglass hull, with spacious & comfortable accommodations. You will be hard pressed to find a more capable cruising boat in this condition and size, at this price level.

*Another Adventure* has enjoyed exceptional care by experienced owners. She has been a New England boat for many years where she is tucked away under cover each Winter. Never chartered, no history of blisters, constantly pampered and updated. In the words of a recent insurance survey... "This survey concludes that this vessel has been very well maintained and is in exceptionally good condition overall..."

Some of her recent updates include:

New standing rigging New canvas w/ full enclosure Updated electronics New gearbox New refrigeration New SS opening ports New Barrier Paint applied to bottom Bilges cleaned & painted and more.

Call for details.

## Основная информация

**Тип судна:** Center Cockpit

**Подкатегория:** Крейсерская яхта

**Модельный год:** 1982

**Год постройки:** 1982

**Страна:** United States

## Размеры

**Длина общая:** 44' 0" (13.41m)

**Длина по ватерлинии:** 35' 6" (10.82m)

**Ширина:** 13' 2" (4.01m)

**Макс. осадка:** 5' 6" (1.68m)

---

## Скорость, вместимость и масса

---

**Водоизмещение:** 26000 Pounds

**Вместимость воды:** 160 Gallons

**Вместимость сточного бака:** 30 Gallons

**Объем топливного бака:** 80 Gallons

---

## Размещение

---

**Всего кают:** 2

---

## Корпус и палуба

---

**Материал корпуса:** Fiberglass

**Материал палубы:** Fiberglass Sandwich

**Комплектация корпуса:** Fin & Skeg

**Цвет корпуса:** white

---

## Информация о двигателе

---

**Двигатели:** 1

**Производитель:** Perkins

**Модель:** 4-108

**Тип двигателя:** Inboard

**Тип топлива:** Diesel

---

# ПОДРОБНОЕ ОПИСАНИЕ

---

## Accommodations

---

**Another Adventure** features a well appointed teak interior. Bulkheads are oiled and trim is varnished, all in excellent condition. The cabin features a recently varnished Teak & Holly cabin sole throughout. Ventilation is excellent with 5 opening deck hatches and 8 opening port lights, as well as 4 dorade vents. All port lights have been replaced with stainless steel ports by AllMetal. Cabin lighting has been updated with new energy-efficient LED bulbs.

**STARTING FORWARD:** Large V-berth forward with storage under. Double hanging locker to starboard, hanging locker with lower drawers to port. The Forward Head is aft to port. SST Vanity, shower w/ sump, Y-valve to holding tank or overboard, ample storage. Aft to starboard is a large storage locker with counter. The Main Cabin features an L-shaped settee to port with settee seating to starboard. Both settees convert to double berths. Teak Lockers and shelving outboard of settees. Centerline drop leaf dining table.

Large U-shaped galley is aft to port with nav station to starboard. The walkthrough to the aft cabin is starboard, featuring massive storage lockers outboard and access to the engine compartment inboard. The engine compartment is a thing of beauty. It is roomy, remarkably clean, and well organized. It houses boat systems including the newly painted Perkins diesel, H/W heater, refrigeration compressor, inverter/charger, water & bilge pumps, batteries and more. All easily accessible for service.

The aft Master Cabin features a large king size berth that will accommodate both for/aft sleeping and athwartship. There is a center cushion to fill in space between port & starboard extensions. Ample storage under berth. The large ensuite head features a separate shower stall. Several opening ports and a large overhead hatch provide excellent ventilation and light.

## Galley

---

3-burner Shipmate LPG stove & oven (tank locker accessed from aft deck) Large icebox with 12V refrigeration by Super Cold Machine **2015** Double SST sink with H/C pressure water and backup foot pumps 12 gallon Raritan H/W tank 160 gallons Fresh Water capacity Massive storage capacity and counter space.

## Electrical Equipment

---

Batteries: One 8D Starting Battery in engine compartment Two AGM 12V Two 6V in series Battery wiring replaced **2015** 30 Amp AC power 1000W Inverter/Charger by Heart Interface Simpson Lawrence 12V windlass on fordeck Two electric bilge pumps (one automatic, one manual) Renogy Solar Panels mounted over the dinghy davits

---

## Electronics

---

Standard Horizon CP500 Chartplotter at helm (2013) Datamarine Depth Datamarine Speed/Distance Datamarine Wind Autohelm belowdecks autopilot Standard Horizon Matrix GX2150 VHF with AIS, linked to plotter (2013) Standard Horizon Remote Mic at the helm

---

## Deck & Hull

---

Solid fiberglass hull with original gelcoat in good condition Long fin keel with skeg hung rudder Bottom recently soda-blasted and 2-3 layers of barrier coat applied **2014** No history of blisters **Decks** are balsa cored with molded light grey non-skid starting forward: Single bow roller forward **Ground Tackle:** Simpson Lawrence Electric Windlass with foot switch Large Rocna-style anchor w/40' 5/16 chain lead + 200' of nylon Large Danforth anchor stored in Lazarette on aft deck 30" high double lifelines w/ Port & Starboard boarding gates 5 opening hatches 8 opening port lights (all replaced with stainless steel ports) 4 dorade boxes w/ chrome cowl vents Deck washdown mid-ship port side Mid-ships mooring chocks & cleats Forespar Dinghy davits, with solar panel mounted over Novalift outboard motor crane mounted aft Teak outboard motor mount on stern rail SST swim ladder on transom **Cockpit:** Roomy center cockpit with accommodations for up to 8. Wheel steering Morse controls for the engine Varnished teak drop-leaf cockpit table teak pedestal mounted drink holder Full canvas enclosure (dodger, bimini & side curtains) 2011 Cockpit cushions Varnished teak companionway washboards Canvas helm cover All Exterior Teak is finished with Cetol covered with 2-3 coats of Cetol Clear. All brightwork in excellent condition.

---

## Sails and Rigging

---

Keel-stepped double-spreader masthead sloop rig All spars painted off-white SST 7/16" 1x19 wire standing rigging replaced **2011** Schaeffer System 3100 Jib Furler Firdell Radar Reflector mounted on mast Tri-color masthead light **Winches:** Two Barient 32 primaries Three Barient 21 Halyard & Sheeting winches One Barient 10H **Sails:** Dacron Main 135% Genoa on furler

---

## Mechanical, Plumbing

---

Perkins 4-108 50hp diesel 1982 freshly painted and spotless New starter motor **2015** New Hurth Gearbox **2015** Hours are unknown because meter has been reported to register when the engine is off. Racor fuel/water separator/filter Balmar ALS-5 Advanced Regulator Line spurs on prop shaft New 3-bladed fixed prop

---

## Safety

---

**Safety Equipment:** Rail-mounted MOB/LifeSling 406 Mhz ePirb 3 portable Fire



---

Extinguishers 2 fixed Fire Exinguishers (engine compt.) Firdell Radar Reflector Horseshoe Buoy

## Исключения

---

При продаже яхты исключаются личные вещи владельца.

## Отказ от ответственности

---

Компания предоставляет описание судна или яхты добросовестно, но не может гарантировать точность этой информации, а также не ручается за техническое состояние. Покупатель должен проинструктировать своих агентов или оценщиков исследовать представленную информацию более подробно, по собственному желанию. Продажа судна или яхты, изменение цены или снятие с продажи будет происходить без предварительного уведомления.

# ФОТОГРАФИИ

**Cruising somewhere**



**On the road**



**port**



**starboard**



**ready for winter**



**stern**



**bow**



**anchor**



**cockpit1**



**companionway**



**helm instruments**



**bow roller**



**cockpit aft**



**mid-ship chock**



**davits**



**solar panel**



**port dinette**



**port dinette2**



**main cabin forward**



**starboard settee**



**starboard settee**



**starboard aft**



**nav station**



**aft cabin2**



**aft cabin2**



**aft head1**



**aft shower**



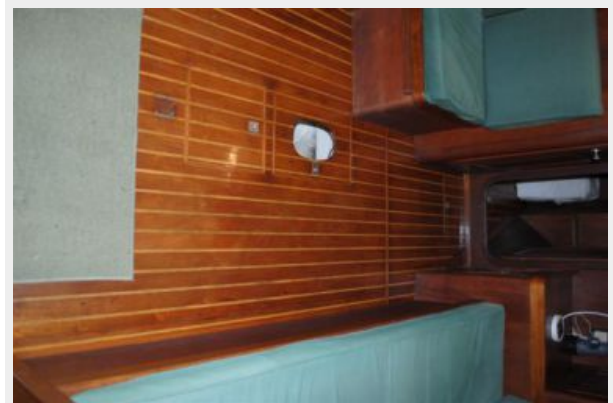
**aft cabin lockers**



**walkthru lockers**



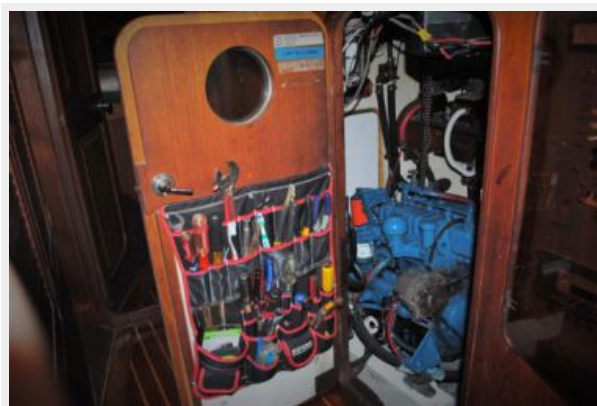
**cabin sole**



**bilge**



**engine room door**



**engine**



**clean engine room**



**forward cabin1**



**forward cabin vanity**



**forward cabin**



**v-berth**



**galley1**



**galley2**



**stove**



**new ports**





# КОНТАКТЫ

---

Андрей Шестаков (Andrey Shestakov) – ведущий яхтенный брокер отдела продаж яхт и судов компании Shestakov Yacht Sales Inc. Официальный представитель Shestakov Yacht Sales Inc. для русскоговорящих клиентов в центральном офисе компании в Майами/Форт Лодердейл/Флорида/США.

## Контактная информация

---

Email: [andrey@shestakovyachtsales.com](mailto:andrey@shestakovyachtsales.com)

Web: [shestakovyachtsales.com](http://shestakovyachtsales.com)

## Телефоны

---

Краснодарский край: **+7(918)465-66-44**

США, Майами, Флорида: **+1(954)274-4435**

## Время работы

---

Понедельник – Суббота: **9:00 - 21:00**  
EDT

Воскресенье: **Закрито**

## Адрес

---



Harbour Towne Marina, 850 NE 3rd St,  
STE 213, Dania, FL 33004