

MAGGIE B — HATTERAS



Builder: HATTERAS

Year Built: 1977

Model: Cruiser

Price: PRICE ON APPLICATION

Location: United States

LOA: 58' 0" (17.68m)

Beam: 18' 0" (5.49m)

Max Draft: 5' 10" (1.78m)

Cruise Speed: 8 Kts. (9 MPH)

Max Speed: 9 Kts. (10 MPH)

Our experienced yacht broker, Andrey Shestakov, will help you choose and buy a yacht that best suits your needs **Maggie B — HATTERAS** from our catalogue. Presently, at Shestakov Yacht Sales Inc., we have a wide variety of yachts available on our sale's list. We also work in close contact with all the big yacht manufacturers from all over the world.

If you would like to buy a yacht **Maggie B — HATTERAS** or would like help answering any questions concerning purchasing, selling or chartering a yacht, please call **+1(954)274-4435**

TABLE OF CONTENTS

TABLE OF CONTENTS	2
SPECIFICATIONS	4
Overview	4
Basic Information	4
Dimensions	4
Speed, Capacities and Weight	4
Hull and Deck Information	4
Engine Information	5
DETAILED INFORMATION	6
Overview	6
Salon	6
Galley	7
Day Head	7
Pilothouse	7
Bow & Portugese Bridge	8
Side Decks	8
Aft Deck	9
Cockpit	9
Fly Bridge	10
Forward Stateroom	10
VIP Stateroom	11
Master Stateroom	11
Engine Room & Mechanical	12
Disclaimer	12
Exclusions	13
Disclaimer	13
PHOTOS	14
CONTACTS	25

Contact details	25
Telephones	25
Office hours	25
Address	25

SPECIFICATIONS

Overview

Hatteras LRC's were built for Long Range passages in unknown weather. At something north of 1 nautical mile per gallon, her 2300+ gallon fuel capacity will take her just about anywhere her Captain wants to go. This boat is built like a tank to take anything the sea can dish out. Owners change in plans allow us to offer Maggie B for immediate sale! She is ready for a new owner's adventures.

Basic Information

Category: Cruiser

Model Year: 1977

Year Built: 1977

Country: United States

Dimensions

LOA: 58' 0" (17.68m)

Beam: 18' 0" (5.49m)

Max Draft: 5' 10" (1.78m)

Speed, Capacities and Weight

Cruise Speed: 8 Kts. (9 MPH)

Max Speed: 9 Kts. (10 MPH)

Displacement: 90000 Pounds

Water Capacity: 440 Gallons

Fuel Capacity: 2390 Gallons

Hull and Deck Information

Hull Material: Fiberglass

Engine Information

Engines: 2

Manufacturer: Detroit Diesel

Model: 4-71

DETAILED INFORMATION

Overview

Classic Hatteras styling with a true trawler twist! The 58 was the first and arguably the best model of the Hatteras LRC's. Maggie B is a full displacement, Pilothouse Yacht with a Portuguese Bridge, Large Flying Bridge, and Stabilizers. Her 4-71 diesels offer an 8 knot cruise at better than a nautical mile per gallon. The pilothouse is fully enclosed with sliding side doors for easy access to the wide side deck walkarounds. The galley/salon area is huge, and accesses the large aft deck area. The day head is across from the galley for maximum convenience. Wing doors keep the aft deck weather tight while offering easy access forward. The flybridge is accessed via a ladder from the pilothouse, and features another helm, lounge seating, and the tender storage. Aft is an ample cockpit with a transom door for easy access to the swim platform.

Accommodations below include the master stateroom which is accessed from a private stairway from the salon and boasts a king bed and private head. The forward stairway accesses the 2 forward staterooms, each with head and shower, and the engine room and companionway.

Salon

The large salon boasts full scale residential furniture and Brazilian Walnut flooring. The private stairway to the master stateroom is at the aft corner. The entertainment center aft includes a flat panel TV, Bose surround sound speakers, Sony receiver, and a Magnavox CD/DVD player. The galley is forward in this space and includes a stone bar top and full kitchen. There is a pantry just off the galley and the day head is conveniently located just aft of the Pilothouse.

- Marine Air air conditioning
- Overhead DC lighting
- Wood blinds
- Padded valances
- Brazilian Walnut flooring
- Table with leaves can be moved to center of floor for dining
- Stools
- Leather settee and chair
- Leather ottoman
- End tables with stone tops that match galley counter tops and lamps
- Sylvania flat screen TV
- Sony receiver
- Magnavox CD/DVD player
- Bose surround sound speaker system
- Side table with reading lamp

Galley

The galley is adjacent to the salon and has the feel of a residential kitchen. It features stone counter tops and custom cabinets with modern appliances and fixtures.

- Magic Chef gas stove with oven
- GE Profile Microwave
- GE Profile refrigerator
- Gaggenau downdraft vent
- Stainless steel double bowl sink
- Garbage disposal
- Track lighting
- DC overhead lighting
- Abundant storage in overhead cabinetry and base cabinets
- Pantry

Day Head

The convenient day head is just behind the Pilothouse and easily accessed from the salon or Pilothouse.

- Corian counter top
- Vanity with storage
- AC and DC lighting
- Exhaust fan
- Full sized head

Pilothouse

The Pilothouse is conveniently accessed from the Salon/Galley area and the forward stairway. It also accesses the bridge via a ladder on the starboard side. The AC and DC distribution centers, generator start panels and AC switching panels are all within easy reach of the helm. The system alarms, engine alarms and controls are also located here. This is the true command center of the vessel.

There is a large riding bench for companions to comfortably ride with great visibility and a leaning post for the helmsman. The bench features chart storage and abundant cabinet storage.

- Garmin GPSmap 4212 plotter
- ComNav Marine 1001 autopilot
- Del computer with Nav software
- Samsung 15" monitor with cameras, computer and Sat tv access
- JVC monitor

- Furuno FMV 605 bottom machine
- ICOM M-125 vhf radio
- ICOM M710 SSB
- Standard Hailer
- 406 Epirb
- Danforth Constellation compass
- Engine gauges
- Floscan meters with tachometers
- ComNav Marine Rudder angle indicator
- MMC electronic engine controls
- Bow thruster control
- Naiad Stabilizer controls and monitor panel
- Emergency engine shutdowns
- Storage shelves for manuals and navigation instruments
- Ultraleather covered riding seat
- Ultraleather covered helm leaning post
- Formica covered counter tops and helm console - Black for glare free navigation
- DC overhead lighting
- Air conditioning
- Side doors for easy access to the walkaround side decks

Bow & Portugese Bridge

Forward of the Pilothouse is a Portugese bridge with door to the bow deck. Port and starboard doors conceal MMC controls for engines and thruster control for ease of dockinging all conditions. The massive bow pulpit and stainless steel rails are befitting a ship. This area is all business with a large windlass, 2 storage boxes, fresh and salt water washdowns, massive cleats and chocks and a door to keep any wash out of the side deck walkarounds.

- Liferaft
- Plath Windlass with rope and chain capstan
- 55 # Delta Plow anchor
- Varnished teak caprails
- Boarding ladder mounted to rails
- Intermediate lifelines
- Raw water washdown
- Fresh water washdown

Side Decks

The side decks extend from the aft deck wing doors forward around the Pilothouse for 360 degree access to handling lines or access to the dock from boarding gates port and starboard.

The teak caprail offers a great hand hold while adding class to the vessel. The dodger board below the caprail offers complete security in any weather condition. The side deck is covered from the salon area aft and blends into the aft deck roof. The wing doors keep the aft deck from suffering the effects of ill weather.

Maggie B is equipped with passive roll dampers which can be deployed at anchor to minimize roll from swell or wakes.

- Spring cleats
- Stainless steel rails with varnished caprails
- Dodger boards for maximum security in any weather
- Boarding gates port and starboard
- Wing controls port and starboard are hidden in compartments forward
- Aft wing doors close off the aft deck
- Marquipt Tide Ride boarding ladder
- Marquipt Side step boarding ladder
- Roll dampers

Aft Deck

The aft deck offers another living space. It can be opened to the weather for an outdoor experience or protected by screens. There is a large outdoor settee and a teak octagonal table with 4 teak chairs. The dodger board gives it a finished look and feel. A cabinet forward hides a washer/dryer combo unit.

- DC overhead lighting
- Dive tank storage racks
- Gate and steps to cockpit level
- Wing doors for easy access to side decks
- Teak outdoor furniture
- Overhead rod holders

Cockpit

The cockpit offers easy access to the swim platform and water levels. It allows for easy line handling or boarding as well as providing the spot for fishing, diving and all kinds of water activities.

- Hawse pipes in covering boards and transom
- Gunnel mounted rod holders
- Transom door
- Swim platform with boarding ladder
- Dinghy cleats on platform

- Shore power inlet
- Lazarette hatches
- Large deck drains
- Spare props in lazarette

Fly Bridge

The flybridge is huge and offers a second helm and much more. There is a large weatherproof lounge area for entertaining or sunbathing, a wet bar with refrigeration and icemaker, Zodiac tender and davit, and still plenty of room for bicycles or other toys.

- Garmin GPSmap 4208
- ComNav Marine autopilot control
- ComNav Marine rudder angle indicator
- ICOM M57 vhf radio
- Tachometers and engine gauges
- Bow thruster control
- Pompanette helm chairs with footrests
- Fiberglass bar center with sink
- U-Line icemaker
- Refrigerator
- Arch with Bimini top and overhead lights
- Large U-shaped seating area with storage under
- 2002 Zodiac 12.5' Yachtline tender with Yamaha F25
- 110V tender hoist

Forward Stateroom

The forward stateroom is an oversized v-berth with tons of room. There is a private head, large hanging locker, abundant drawer storage, and shelves for bulky items.

- V-berth with filler cushion makes a huge bed
- Overhead DC lighting
- AC reading lights
- Overhead hatch
- Portlights
- Large head compartment with stall shower
- Exhaust fan in head
- AC and DC lighting in head
- Air conditioning

VIP Stateroom

The VIP stateroom is also in the forward section of the vessel. It boasts twin bunks that are nearly the size of double beds. It, too has a private head with a large shower. This head can also be accessed from the companionway.

- Dresser between beds with drawer storage
- Large hanging locker
- Drawer storage under beds
- Reading lamps
- Overhead DC lighting
- Ultrasuede headboards
- Air conditioning
- Private access to head
- Corian counter tops
- Large stall shower
- Full sized head
- Storage in vanity cabinet
- Exhaust fan

Master Stateroom

The master stateroom is aft and boasts a full walk around queen bed, walk-in closet, banks of drawers, and a huge private head with full sized tub and shower. This space has been updated with a white enameled look and fresh wallpaper.

- Air conditioning
- Bench seat starboard
- Full queen bed
- Large bank of drawers starboard with locker
- Small reading and writing desk with lamps
- Portlights
- Storage drawers under bed
- TV/VCR
- DVD player
- Large walk-in closet
- Full length mirror on closet door
- Large master head with mirrored ceiling
- Exhaust fan
- Large vanity with corian counter top
- Full sized tub with glass shower doors
- Exhaust fan
- AC and DC lighting

Engine Room & Mechanical

Just off the forward companionway on the way to the engine room is a large mechanical/storage space that is currently mechanical access and spare parts storage. The amount of storage and spare parts is overwhelming. There is a small secondary freezer in this space as well.

The engine room houses the Detroit Diesel 4-71N's as well as the 2 Northern Lights generators, one 12KW and one 6KW. There is room to access all the systems and everything is serviceable.

- Detroit Diesel 4-71N's
- NorthernLights 12KW genset with 6250 hours
- Northern Lights 6KW genset with 3000 hours
- Racor fuel filters for generators
- Dual Racor fuel filters for main engines
- AC and DC distribution panels
- Oil change system
- AC transformers
- MMC control modules
- Air conditioning compressors 3 recently replaced
- Niaid stabilizers
- 32 volt battery bank
- 24 volt battery bank
- 12 volt starting batteries for generators
- 3 battery chargers
- Seawater strainers
- Diamond plate decks around engines
- AC fluorescent lighting
- DC lighting
- Fresh water system with 30 gallon water heater
- Secondary oil filters
- CO2 fire extinguishing system

Disclaimer

While we attempt to display current and accurate data, this listing may not reflect the most recent transactions or may contain occasional data entry errors. Selling agent makes no warranties, express or implied, regarding the content or availability of the products described herein. All inventory listed is subject to availability and prior sale. Please consult selling agent for details. Prices are quoted for the USA only and may not include transportation, taxes, or other applicable charges. Photographs may be representative only and may vary somewhat from the actual items offered for sale. We will not be responsible for inaccurate data obtained from our site. Please check with your local dealer to ensure that you have the latest information available. Information on this web site could include technical inaccuracies or typographical errors. Changes may be periodically made to the information or the products herein. Questions or comments regarding

these policies may be directed to website hosting agent.

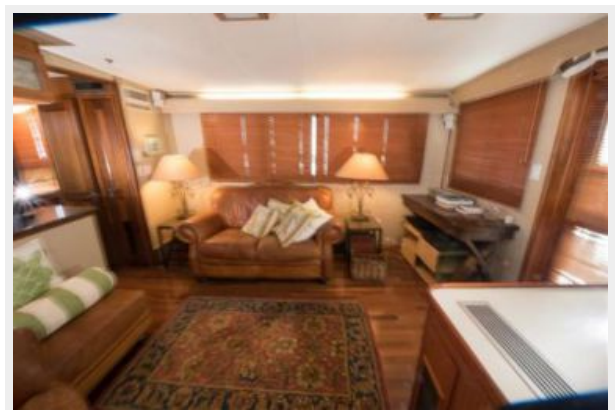
Exclusions

Owner's personal belongings.

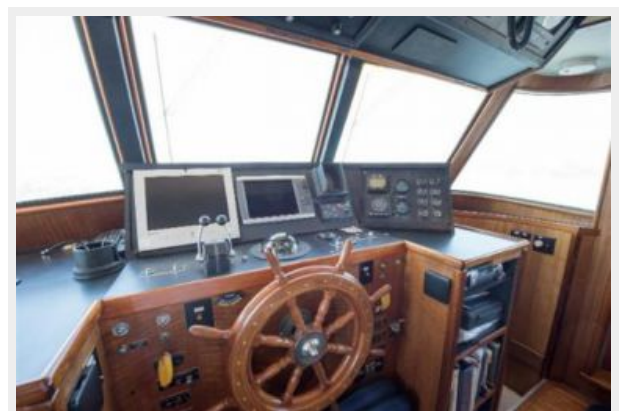
Disclaimer

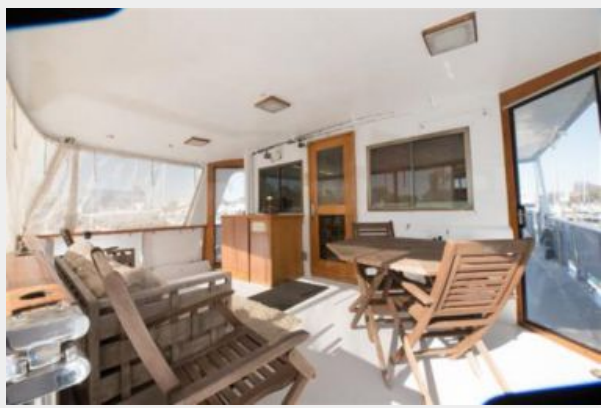
The Company offers the details of this vessel or yacht in good faith but cannot guarantee or warrant the accuracy of this information nor warrant the condition of the vessel. A buyer should instruct his representatives, agents, or his surveyors, to investigate such details as the buyer desires validated. This vessel or yacht is offered subject to prior sale, price change, or withdrawal without notice.

PHOTOS























CONTACTS

Andrey Shestakov, leading yacht broker of the sales department of Shestakov Yacht Sales Inc. Shestakov Yacht Sales Inc., the official representative of the Miami/Fort Lauderdale FL headquarters.

Contact details

Email: andrey@shestakovyachtsales.com

Web: shestakovyachtsales.com/en/

Telephones

USA: +1(954)274-4435

Office hours

Monday – Saturday: **9:00 - 21:00** EDT

Sunday: **closed**

Address



Harbour Towne Marina, 850 NE 3rd St,
STE 213, Dania, FL 33004