

QUANTUM — AZIMUT



Builder: AZIMUT

Year Built: 2009

Model: Motor Yacht

Price: PRICE ON APPLICATION

Location: United States

LOA: 62' 1" (18.92m)

Beam: 16' 7" (5.05m)

Max Draft: 5' 1" (1.55m)

Cruise Speed: 23 Kts. (26 MPH)

Max Speed: 29 Kts. (33 MPH)

Our experienced yacht broker, Andrey Shestakov, will help you choose and buy a yacht that best suits your needs **Quantum — AZIMUT** from our catalogue. Presently, at Shestakov Yacht Sales Inc., we have a wide variety of yachts available on our sale's list. We also work in close contact with all the big yacht manufacturers from all over the world.

If you would like to buy a yacht **Quantum — AZIMUT** or would like help answering any questions concerning purchasing, selling or chartering a yacht, please call **+1(954)274-4435**

TABLE OF CONTENTS

TABLE OF CONTENTS	2
SPECIFICATIONS	5
Overview	5
Basic Information	5
Dimensions	6
Speed, Capacities and Weight	6
Accommodations	6
Hull and Deck Information	6
Engine Information	6
DETAILED INFORMATION	7
OVERVIEW	7
Accommodations	7
Master Stateroom	7
VIP Stateroom	8
Guest Stateroom	8
Crew Quarters	8
Galley	8
Lower Helm	8
Fly Bridge	9
Aft Deck	9
Deck Equipment	9
Engine Room/ Mechanical	10
Additional	10
Safety	10
Exclusions	10
Disclaimer	10
PHOTOS	11
Aerial	11

Aerial	11
Aerial	11
Aerial	11
Foredeck	11
Aerial	11
Foredeck	12
Flybridge	12
Flybridge	12
Flybridge	12
Flybridge	12
Flybridge	12
Aft deck	13
Aft deck	13
Day head	13
Aft deck	13
Day head	13
Fwd VIP	13
Fwd VIP bath	14
Fwd VIP	14
Fwd VIP bath	14
Guest Room	14
Master	14
Master	14
Master	15
Master bath	15
Master bath	15
Salon	15
Salon	15
Galley/Dinette	15

Galley/Dinette	16
Dinette	16
Lower helm	16
Galley	16
Lower helm	16
Lower helm	16
Flybridge helm	17
Flybridge helm	17
Crew	18
Engine room	18
Engine room	18
CONTACTS	19
Contact details	19
Telephones	19
Office hours	19
Address	19

SPECIFICATIONS

Overview

The Azimut evolution is one of the most desirable boats on the market. Her owner has spared no expense with an "Open checkbook" policy. This Azimut 62' is fully loaded to American specs. This three stateroom layout with crew quarters makes for a great family cruiser, and the plentiful exterior space with additional seating on the flybridge makes it perfect for entertaining. 2016: Brand NEW 23kw Generator with 3 year warranty 2012/2013 Refit: December 2012: 1. Serviced at 1000 hrs 2. Remove, polished, dynamically balanced and reinstall propellers, shafts and replace two 75mm x 95mm bronze cutlass bearings. 3. Install all new KVH Tracvision M3 satellite TV system and KVN M10 direct satellite receiver with RF remote control. 4. Install new Wave Wifi with 2.4 GHz 11DB antenna and wireless access point. 5. Install new Cockpit/Flybridge/Salon stereo system. 6. All new TV's throughout boat. Master- "Samsung" 32" LED HDTV 1080P. Forward VIP- "Toshiba" 24" LED HDTV 1080P with built in DVD player. Starboard guest stateroom- "Samsung" 26" LED HDTV 1080P. New digital analog audio converter for Apple TV/Bose interface. 7. Install NEW Deep Sea Matrix Thru-hull 6500 Lumens blue color 110-220VAC underwater lights. January 2013: 1. 12 new batteries AGM 105 AH. 2. New Carpet Sea Island color throughout salon area, steps and all staterooms. 3. New Aft deck table February 2013: 1. New A/C compressor and A/C Sea water pump. Full maintenance service for air conditioning system. 2. New Blue LED overhead lights installed in Salon and Galley. March 2013: 1. Full crane inspection and restoration. Installed new lifting cable and all new hydraulic hoses April 2013: 1. Watermaker service. Installed new salinometer. Replace membranes and changed all fluids. 2. Installed new Garmin 5212, multifunction touch screen display on Flybridge and Garmin G2 Blue vision chart for South Florida/ Bahamas

Basic Information

Category: Motor Yacht

Model Year: 2009

Year Built: 2009

Refit Year: 2012

Country: United States

Vessel Top: Bimini Top

Fly Bridge: Yes

Dimensions

LOA: 62' 1" (18.92m)

Beam: 16' 7" (5.05m)

Max Draft: 5' 1" (1.55m)

Speed, Capacities and Weight

Cruise Speed: 23 Kts. (26 MPH)

Max Speed: 29 Kts. (33 MPH)

Gross Tonnage: 56 Pounds

Water Capacity: 264 Gallons

Holding Tank: 92 Gallons

Fuel Capacity: 988 Gallons

Accommodations

Total Cabins: 3

Total Berths: 4

Sleeps: 6

Total Heads: 3

Crew Cabin: 1

Crew Berths: 2

Crew Sleeps: 2

Hull and Deck Information

Hull Material: Fiberglass

Engine Information

Engines: 2

Manufacturer: Caterpillar

Model: C18

Engine Type: Inboard

Fuel Type: Diesel

DETAILED INFORMATION

OVERVIEW

In physics, a quantum is the minimum amount of any physical entity involved in an interaction - but in the yachting world, QUANTUM is a fully-loaded, stylish & sexy, well-maintained 2009 62' Azimut Evolution with low hours. The interior of QUANTUM is warm & inviting, while still exhibiting the Italian stylishness for which Azimuts are well-known; her full-beam master stateroom, not to mention her two additional over-sized guest cabins, will leave you convinced that, this listing aside, the yacht must be at least seventy feet. Combine this with her more-than-ample exterior spaces - her flybridge alone comfortably seats eight guests - and it is easy to see why Azimut 62s are rarely on the market for long. Given all of this, it goes without saying that one need not be a theoretical physicist to see that QUANTUM is a seriously compelling deal. She is easy-to-view and very ready-to-be-seen in Delray Beach.

Accommodations

Designing for maximum luminosity was one of the primary goals for the designers of the Azimut "Evolution" - and QUANTUM unquestionably delivers on this front. Broad windows, skillfully integrated into the hull's design, allow light to illuminate all the three staterooms below deck. The spacious, well-appointed interior layout is far superior to any yacht in its class. As you walk through the Salon, you will find spacious seating for the whole family! The galley is masterfully integrated into the dining area, giving QUANTUM yet another area for entertaining. Continuing forward, you will pass by the lower helm station before walking down the private stair case to the guest quarters. Midship you will find independent access to the Master stateroom, allowing for maximum space and a private suite. On the port side there is a day head for everyone's convenience; adjacent to the day head is a twin guest room with side-by-side berths. The spacious forward VIP has an ensuite bath and a walk-in closet, providing for more than ample storage.

Master Stateroom

- Full Beam Master Stateroom
- Large Ensuite bathroom with stand alone shower
- Queen bed with drawer unit
- Double-door mirrored wardrobe on foreside
- Large walking closet
- Built-in Vanity unit with drawers
- Large hull side windows on both Port & Starboard sides
- Cherry wood doors and frames
- New curtains, upholstery and carpet
- Reading lights

- Rope lighting under bed and behind pelmets
- Samsung 32" LED HDTV 1080p

VIP Stateroom

- Queen bed
- Ensuite Bathroom with walk in shower
- Mirrored headboard
- Large walk-in closet
- Escape hatch with shade and mosquito screen
- New curtains, upholstery and carpet
- Reading lights
- Toshiba 24" LED HDTV 1080P with built in DVD player

Guest Stateroom

- Twin beds
- Beside tables
- Reading lights
- Closet with drawers and shelves
- New curtains, carpet, and upholstery
- Samsung 26" LED HDTV 1080P

Crew Quarters

- Air conditioned crew quarters with private access from swim platform
- Ensuite Bathroom

Galley

- 2x stainless steel sinks
- Isotherm Stainless steel refrigerator/freezer combo
- Scot Ceran 4 burner cook top
- Raritan Ice maker
- Cuisinart Microwave

Lower Helm

- Raymarine E120

- Raymarine E80
- Jabsco search light
- Sea Energy maneuvering joy stick
- Raymarine Auto-pilot ST6002
- Raymarine Tridata ST6002
- Quick chain counter CHC 1202 M

Fly Bridge

Every last detail was designed for the owners comfort, from the wide open sunbathing area to the dining area and not to mention the spacious helm console. Aft of the spacious entertaining area is ample room for a tender or waverer. Another prime example why this vessel is in a league of its own.

- Wet bar with grill
- Garmin GPSMAP 5212
- Raymarine VHF Ray240
- Raymarine Auto-pilot ST6002
- Raymarine Tri-data ST6002
- ZF controls
- Quick chain counter CHC 1202 M
- Sea energy maneuvering joystick
- Jabsco search light
- JL Audio sound system
- Frigbar- Freezer or Refrigerator
- Opacmare davit

Aft Deck

- Large dining area
- JL audio sound system
- Generator control unit
- Sea-fire shut down system

Deck Equipment

- Quick Capstan winch
- Swim platform shower
- Fresh water supply

Engine Room/ Mechanical

- Bow & Stern thruster
- 2x Caterpillar C18's
- 5/ 16 Brand New Kohler 23kw Generator with 3 year warranty
- Cruisair A/C
- Idromar watermaker
- Sea water pump
- Reverse fuel polishing system
- Razor Fuel system
- Team head system
- GE washer/dryer
- Hydraulic swim platform

Additional

- Underwater lights
- New carpets throughout boat

Safety

- Sea-fire FM-200 automatic extinguishing system

Exclusions

Owner's personal belongings.

Disclaimer

The Company offers the details of this vessel or yacht in good faith but cannot guarantee or warrant the accuracy of this information nor warrant the condition of the vessel. A buyer should instruct his representatives, agents, or his surveyors, to investigate such details as the buyer desires validated. This vessel or yacht is offered subject to prior sale, price change, or withdrawal without notice.

PHOTOS

Aerial



Aerial



Aerial



Aerial



Aerial



Foredeck



Foredeck



Flybridge



Flybridge



Flybridge



Flybridge



Flybridge



Aft deck



Aft deck



Aft deck



Day head



Day head



Fwd VIP



Fwd VIP



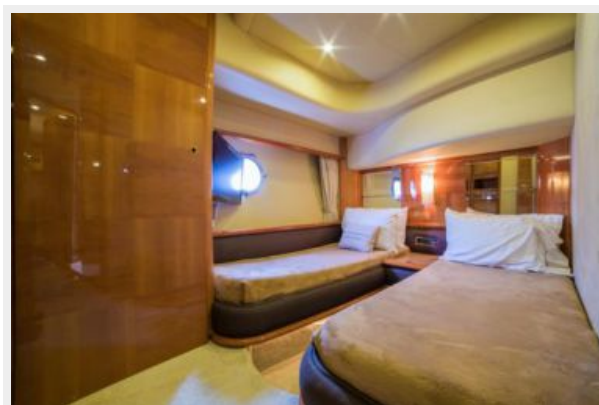
Fwd VIP bath



Fwd VIP bath



Guest Room



Master



Master



Master



Master bath



Master bath



Salon



Salon



Galley/Dinette



Galley/Dinette



Dinette



Galley



Lower helm



Lower helm



Lower helm





Flybridge helm

Flybridge helm



Crew



Engine room



Engine room



CONTACTS

Andrey Shestakov, leading yacht broker of the sales department of Shestakov Yacht Sales Inc. Shestakov Yacht Sales Inc., the official representative of the Miami/Fort Lauderdale FL headquarters.

Contact details

Email:
andrey@shestakovyachtsales.com

Web: shestakovyachtsales.com/en/

Telephones

USA: **+1(954)274-4435**

Office hours

Monday – Saturday: **9:00 - 21:00 EDT**

Sunday: **closed**

Address



Harbour Towne Marina, 850 NE 3rd St,
STE 213, Dania, FL 33004