

UTOPIA — TIARA



Builder: TIARA

Year Built: 2001

Model: Cruiser

Price: PRICE ON APPLICATION

Location: United States

LOA: 35' 5" (10.79m)

Beam: 13' 3" (4.04m)

Min Draft: 3' 3" (0.99m)

Cruise Speed: 26 Kts. (30 MPH)

Max Speed: 32 Kts. (37 MPH)

Our experienced yacht broker, Andrey Shestakov, will help you choose and buy a yacht that best suits your needs **Utopia — TIARA** from our catalogue. Presently, at Shestakov Yacht Sales Inc., we have a wide variety of yachts available on our sale's list. We also work in close contact with all the big yacht manufacturers from all over the world.

If you would like to buy a yacht **Utopia — TIARA** or would like help answering any questions concerning purchasing, selling or chartering a yacht, please call **+1(954)274-4435**

TABLE OF CONTENTS

TABLE OF CONTENTS	2
SPECIFICATIONS	3
Overview	3
Basic Information	3
Dimensions	3
Speed, Capacities and Weight	4
Accommodations	4
Hull and Deck Information	4
Engine Information	4
DETAILED INFORMATION	5
Broker Comment, Updates & Services	5
Test Results	6
Hull & Deck Features	6
Salon Features	6
Cabin Features	7
Mechanical & Electrical Systems	7
Helm & Electronics Features	8
Exclusions	8
Disclaimer	8
PHOTOS	10
CONTACTS	33
Contact details	33
Telephones	33
Office hours	33
Address	33

SPECIFICATIONS

Overview

The Tiara 3500 Open was a next generation with groundbreaking design and function in its day. The profile is enhanced by a unique curved reverse transom, with molded transom door and gate, and integrated swim platform and bow pulpit. Cockpit seating includes a double-wide back-to-back helm seat, as well as L-shape companion seat with removable forward filler seat. Below deck, the interior is large and comfortable, with headroom that is 6'6" in the salon, and 6'4" at the foot of the queen-sized pedestal berth in the master stateroom. The salon includes a starboard 7'4" lounge – convertible to a dinette – and/or a double berth (the lounge backrest also flips up to make a pullman-style berth. Opposite the lounge is an ample galley, and a spacious all-in-one head and molded fiberglass shower. This Tiara 3500 Open has been professionally maintained and its current owner is ready for his next yacht. Contact us today to schedule a private showing.

Basic Information

Category: Cruiser

Sub Category: Cabin Cruiser

Model Year: 2001

Year Built: 2001

Country: United States

Vessel Top: Arch

Dimensions

LOA: 35' 5" (10.79m)

Beam: 13' 3" (4.04m)

Min Draft: 3' 3" (0.99m)

Clearance: 11' 4" (3.45m)

Speed, Capacities and Weight

Cruise Speed: 26 Kts. (30 MPH)

Cruise Speed RPM: 2600 Kts.

Cruise Speed Range: 240

Max Speed: 32 Kts. (37 MPH)

Max Speed RPM: 500 Kts.

Max Speed Range: 210 Kts.

Displacement: 14000 Pounds

Water Capacity: 70 Gallons

Holding Tank: 30 Gallons

Fuel Capacity: 360 Gallons

Fuel Consumption: 23 Gallons

Accommodations

Total Cabins: 1

Total Berths: 2

Sleeps: 4

Total Heads: 1

Hull and Deck Information

Hull Material: Fiberglass

Deck Material: Fiberglass

Hull Configuration: Modified V-Hull

Hull Finish: Plastic

Engine Information

Engines: 2

Manufacturer: Cummins

Model: 6BTA

Engine Type: Inboard

Fuel Type: Diesel

DETAILED INFORMATION

Broker Comment, Updates & Services

2015

- Compound, Wax & Detail – April
- Engine Room Cleaned & Detailed
- Bottom Paint & Zincs – March
- Volt & Temp Gauges Calibrated
- Port RPM Sending Unit Replaced

2014

- (3) New Deka House Batteries – December
- New Port Engine Thermostat
- New Port Engine Oil Pressure Sending Unit
- Rebuilt Both Alternators
- Replace Both Engine Impellers – November
- Heat Exchangers & Aftercoolers Serviced
- New ICOM VHF
- Halon System Recertified
- Fuel Tanks Cleaned & Serviced
- New Hoses and Clamps throughout
- Oil, Filters, Fuel, Zincs on Mains (1272 hours) and Generator (527)
- New Running & Steaming Lights
- New Upholstery and Bolsters
- Radar Serviced

2013

- Painted Arch & Windshield
- New Cockpit Speakers (4)
- New Custom Helm Dash

2012

- New MarineAir Upgraded to 16,000 BTU Cooling & Heating
- New Evaporator Coil on Fridge

2011

- New Injectors (12)
- Heat Exchangers sent out to Broward Radiator for Service

Test Results

RPM	GPH	MPH
650	1	5.5
1000	2.1	8.1
1500	7.8	11.3
2000	15.7	20.1
2400	21.3	27.3
2600	23.4	29.8
2800	28.6	32.3
3000	35.6	35.8

Hull & Deck Features

- Bimini Top
- Coast Guard-Approved Safety Package
- Stainless Steel Cleats (6)
- Hawse Pipes aft for aft cleants (2)
- Navigation Lights
- Maxwell Windlass (Electric)
- Windshield Washers & Wipers
- Non-skid diamond shape decking
- Engine Room Access – Day Hatch & Full floor lift with dual rams
- Extended Swim Platform

Certifications:

- Meets Applicable USCG & ABYC Standards
- NMMA Certification

Salon Features

- Tinted Entry Sliding Door with Screen Door
- Settee/Dinette, U Shaped Leather w/ Storage Below
- Table, Adjustable
- Teak and Holly Sole
- Panasonic TV with VHS
- Clarion AM/FM Stereo with CD Player
- Companionway Stairs with Teak Hardwood Tread
- Storage and DC Panel Access under Steps
- Custom Tiara Electrical Panel

- Forward Bulkhead with Privacy Door
- Overhead Lighting
- Opening SS Port Lights (2) w/Screens
- Overhead Hatch w/Shade

Cabin Features

Master Stateroom:

- Centerline Berth w/Storage Below
- Bedspread and Shams
- Mirrored Headboard
- Hanging Locker, Cedar Lighted
- Storage Cabinet w/Shelves
- Teak and Holly Sole
- Reading Lights
- Opening SS Port Lights (2) w/Screen
- Overhead Hatch w/Shade
- Privacy Door

Head:

- Stand-up Head w/Shower Curtain
- Vanity w/Storage
- Corian Counter Top with Integral Sink
- Mirrored Medicine Cabinet
- VacuFlush Toilet
- Exhaust Fan
- Privacy Door

Mechanical & Electrical Systems

- Hydraulic Engine Room Hatch
- Engine Access Hatch next to Helm
- Automatic Fire Suppression System
- Bilge Pumps
- Bilge Blower System
- Engine Synchronizer System
- Hydraulic Steering System
- Trim Tab System
- Oil Change System
- Racor Fuel Filters
- Fuel Shut-off Valves

- Low Oil Pressure and High Temp Engine Alarms
- Air Conditioning and Heating, 16,000 BTU UPGRADED from 12,000 BTU in 2012
- Overboard Discharge w/Holding Tank and Macerator
- 12VDC/120 VAC Systems
- Generator, Westerbeke 5.0 KW (599 hours)
- Dual 30 Amp Shore with splitter and (1) Cord
- Battery Charger
- Batteries – House New 12/2014 Engine New 10/2012
- Battery Shut Off and Parallel Switches
- Hot Water Heater
- Windlass System
- Water and Waste Level Indicator

Helm & Electronics Features

- Destroyer 24" Stainless Steel Wheel
- Foot Rest
- Main Fuse Panel
- Helm Air Vent
- Rocker Switches
- Custom Dash Panel (New 2014)
- SIMRAD AP11 Auto Pilot
- ICOM IC-M504 VHF
- Garmin 4212 Chartplotter & Fishfinder
- Garmin 1kW Transducer – Thruhull
- Furuno 1761 Radar Open Array 4kW 48 Mile
- Panasonic 13' color TV w/built in VCR
- Clarion XMD1 AM/FM/CD
 - Amplifier
 - Remoter Control at Helm
 - Auxiliary Phone or MP3 Plug
 - Speakers (4) New 2013

Exclusions

Owner's personal belongings.

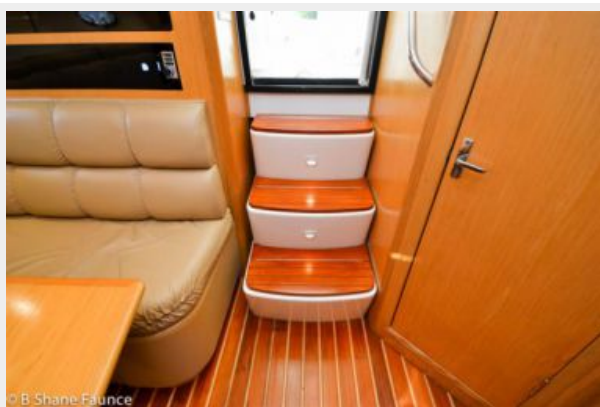
Disclaimer

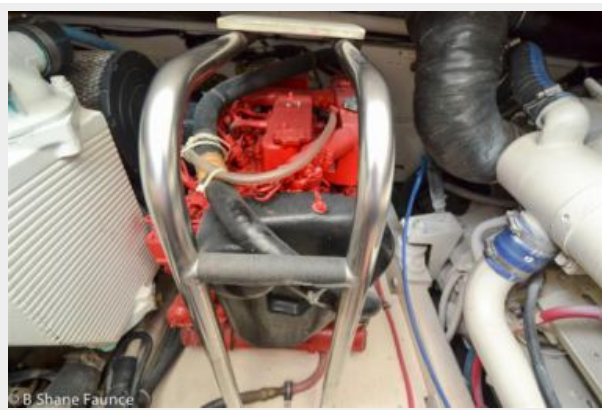
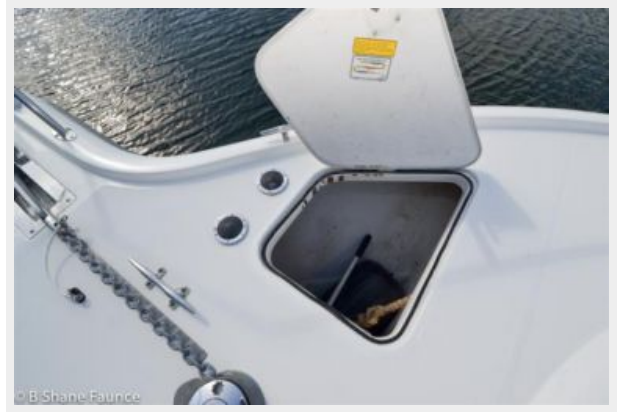
The Company offers the details of this vessel or yacht in good faith but cannot guarantee or warrant the accuracy of this information nor warrant the condition of the vessel. A buyer should instruct his representatives, agents, or his surveyors, to investigate such details as the buyer

desires validated. This vessel or yacht is offered subject to prior sale, price change, or withdrawal without notice.

PHOTOS

































© B. Shane Faunce



© B. Shane Faunce



© B. Shane Faunce



© B. Shane Faunce



© B. Shane Faunce



© B. Shane Faunce















CONTACTS

Andrey Shestakov, leading yacht broker of the sales department of Shestakov Yacht Sales Inc. Shestakov Yacht Sales Inc., the official representative of the Miami/Fort Lauderdale FL headquarters.

Contact details

Email: andrey@shestakovyachtsales.com

Web: shestakovyachtsales.com/en/

Telephones

USA: +1(954)274-4435

Office hours

Monday – Saturday: **9:00 - 21:00** EDT

Sunday: **closed**

Address



Harbour Towne Marina, 850 NE 3rd St,
STE 213, Dania, FL 33004