

NO NAME — SEA RAY



Builder: SEA RAY

Year Built: 2006

Model: Cruiser

Price: PRICE ON APPLICATION

Location: United States

LOA: 38' 0" (11.58m)

Beam: 12' 6" (3.81m)

Max Draft: 3' 1" (0.94m)

Our experienced yacht broker, Andrey Shestakov, will help you choose and buy a yacht that best suits your needs **No Name — SEA RAY** from our catalogue. Presently, at Shestakov Yacht Sales Inc., we have a wide variety of yachts available on our sale's list. We also work in close contact with all the big yacht manufacturers from all over the world.

If you would like to buy a yacht **No Name — SEA RAY** or would like help answering any questions concerning purchasing, selling or chartering a yacht, please call **+1(954)274-4435**

TABLE OF CONTENTS

TABLE OF CONTENTS	2
SPECIFICATIONS	4
Overview	4
Basic Information	4
Dimensions	4
Speed, Capacities and Weight	4
Accommodations	4
Hull and Deck Information	5
Engine Information	5
DETAILED INFORMATION	6
Highlights	6
Recent Upgrades/Service	7
Features and Standard Equipment	7
Cockpit Features	9
Cabin Features	10
Technical Features	13
Electronics Options	17
Contact Information	17
Individual Options	18
Disclaimer	18
Exclusions	18
Disclaimer	18
PHOTOS	19
CONTACTS	25
Contact details	25
Telephones	25
Office hours	25
Address	25

SPECIFICATIONS

Overview

METICULOUSLY CARED FOR

BOW THRUSTER

TURN KEY!

This 2006 Sea Ray 380 Sundancer is in great shape. The owner is fastidious about the care of the vessel. Everything has to be clean, tidy, and ready to go boating at all times. Everything about this boat is extremely nice. The engine room, bottom, and exterior are maintained every month. No excuses here, just a remarkable vessel!

Basic Information

Category: Cruiser

Model Year: 2006

Year Built: 2006

Country: United States

Dimensions

LOA: 38' 0" (11.58m)

Beam: 12' 6" (3.81m)

Max Draft: 3' 1" (0.94m)

Speed, Capacities and Weight

Displacement: 18500 Pounds

Water Capacity: 55 Gallons

Holding Tank: 35 Gallons

Fuel Capacity: 250 Gallons

Accommodations

Total Cabins: 2

Total Berths: 2

Total Heads: 1

Hull and Deck Information

Hull Material: Fiberglass

Engine Information

Engines: 2

Manufacturer: Mercruiser

Model: 8.1

Engine Type: Inboard

Fuel Type: Gas

DETAILED INFORMATION

Highlights

- Standard SmartCraft™ Instrumentation and System View
- Fiberglass hard top with aft sunshade, overhead lighting and stainless steel grab rails
- Swivel bucket helm seat with flip-up thigh-rise bolster, armrests, and heavy-duty pedestal with slide, swivel and pneumatic vertical adjustment
- Companion bench with molded fiberglass storage
- Electrically actuated engine compartment hatch
- Standard generator with sound shield
- Standard LCD drop-down flatscreen TV with remote DVD in salon
- 12V AM/FM single CD with six-disc CD changer, eight (8) speakers and digital cockpit remote control
- Innerspring mattress is standard in forward stateroom
- Cockpit wet bar with sink and faucet, Corian® countertop, stainless steel handrail, trash receptacle, and cooler with dedicated storage
- Large integral/extended swim platform with heavy-duty stainless steel swim ladder
- Separate shower and dual-entry head
- Water manifold system with shut-off valve
- Underwater exhaust
- Ultraleather HP™ standard on all interior seating
- Sirius® satellite receiver with antenna
- Standard anchor washdown

Windlass, Rope/Chain w/Foot

Switches (Lofrans®, Project 1,000

Low Profile)

Certifications:

Meets Applicable USCG & ABYC

Standards

NMMA Certification

Mercury Installation Quality Certification

Recent Upgrades/Service

- Generator Service 10/15
- Engine Service 10/15
- Canvas and Eisenglass 10/15
- New Manifolds 10/15
- Thruster 9/14
- Bottom Paint 9/14
- New Transmission Coolers 9/14
- Raw Water Pump Rebuild 9/14
- New Batteries 3/14
- Props Balanced 1/14
- New Platinum Navionics chard card 1/14
- New Anchor Rode and Chain 1/14

Features and Standard Equipment

HULL & DECK FEATURES

Bottom Paint

Bow Rail, Stainless Steel w/ Welded

Stanchions, Intermediate Rails &

Life Lines

Cleats, Custom Sea Ray® Thru-Bolted-Stainless Steel (6)

Deck Fill Plates, Stainless Steel

Deck Rails, 316 Stainless Steel

Drain Plug, Brass-Threaded -Garboard

Gel Coat, Arctic White

Graphics, Striping

Handrails, 316 Stainless Steel

Hatch, Deck Vent – Translucent w/Locks & Sky Screen Cover (Trapezoid)

Hull Windows Stainless Steel (6 Fixed)

Lights, Navigation

Portlights, Stainless Steel (2 Fixed, 2 Opening)

Resin, High-Performance Vinylester

Rub Rail, PVC w/Stainless Steel Insert

Storage Transom Wall (For Fenders & Gear)

Stringer System - Fiberglass

Swim Platform, Integral w/Concealed

Stainless Steel Three-Step Swim

Ladder w/Integral Grab Handle

Thru-Hull Fittings, Stainless Steel

Toe Rail, Molded Fiberglass - Deck

Vent System, Engine Room - Integral

Windshield, Tempered/Tinted-Curved

Glass w/Stainless Steel Frame,

Electric Front Vent & Stainless

Steel Supports

Windshield Washer System

Windshield Wipers w/Delay & Speed Control

Canvas (Sunbrella®):

Aft Curtain

Front Curtains

Side Curtains

Windlass System:

Anchor, Galvanized

Anchor Chute, Stainless Steel

Anchor Rope/Chain Storage w/Hatch

Anchor Washdown Spigot

Cockpit Features

Beverage Holders (8)

Carpet Liner, Snap-In

Door, Cabin Entry - Acrylic

Door, Transom Center Entry - Acrylic

Floor Liner, Fiberglass - Self-Bailing

Handrails, 316 Stainless Steel

Hard Top, Molded Fiberglass

(Seamless) 20" x 20" Hatch w/Aft

Sunshade & Lighting

Hatch, Engine Room - Electrically

Actuated

Lighting, Indirect

Outlet, 12V Accessory

Outlet, 120V GFI Protected

Seating, Companion Benchw/Molded Fiberglass Storage Base & Euro-Style Backrest

Seating, Helm, Euro-Style w/Flip-Up Thigh-Rise Bolster, Armrests,

Fiberglass Shell w/Slide, Swivel & Pneumatic Vertical Adjustment

Seating, U-Shaped Aft w/Storage Below - Starboard

Seating, L-Shaped Aft - Port

Steps, Boarding

Storage, Side Panel

Table, Corian® Cockpit w/Dedicated Storage

Wet Bar w/Sink, Faucet, Corian® Countertop, Stainless Steel

Handrail, Trash Receptacle & Cooler Storage – Port

Cabin Features

Carbon Monoxide Monitors

Carpet, Deep-Pile BCF - 44-ounce

Curtains & Drape Trim

Handrails, Stainless Steel

Interior Finish - Light Cherry & Dark

Cherry

Lighting, 12V Xenon

Outlet, Phone

Outlets, 120V GFI Protected

Outlet & Switch Plates - Satin Nickel

Finish

Pillows, Accent

Stereo, Clarion® 12V AM/FM Single

CD, Sirius® Satellite Receiver

w/Antenna, 6 Disc CD Changer,

Amplifier, Subwoofer, Speakers

(8), Digital Cockpit Remote Control

& Speaker Selector Switches

Steps, Entryway - Wood

w/Aluminum Pedestal

Storage, In-Floor

Wood Trim, Handcrafted

Salon:

Blinds, Wood

Lighting, 12V Indirect

Seating, Sofa w/Storage Below -

Converts to Bed w/Filler Cushions

Storage, Gunwale Cabinets

Table, Dinette w/High Gloss Wood

Surface and Designated Storage

TV, 20" Flatscreen LCD Drop Down

(120V) w/Remote DVD Player,

Coax Outlet, Gain Control Panel &

Omni Directional Antenna

Galley:

Blinds, Wood

Coffeemaker, 120V

Countertop, Solid Surface w/Sink,

Single Lever Grohe® Faucet &

Sink Cover

Freezer - Dual Voltage 120V/12V

(Waeco®)

Handrail, Stainless Steel

Microwave, 120V

Outlet, 12V Accessory

Power Vent, 12V, Stainless Grill

Refrigerator - Under Counter Dual

Voltage - 120V/12V (Waeco)

Storage, Drawers w/Cutlery Insert

Storage, Upper & Lower w/Designated

Plate & Glass Storage

Stove, 120V Surface-Mounted, Two-

Burner w/Touch Pad

Trash Receptacle w/Chute & Solid

Surface Cover

Forward Stateroom:

Bed, Full-Size w/Innerspring

Mattress, Pillows, Sheets &

Coordinated Spread

Door, Privacy Sliding Pocket

Hanging Locker w/Light & Shelves -

Starboard

Hanging Locker, Mirrored w/Light - Port

Mirrored Rope Locker Bulkhead

Storage, Side Shelves

TV 17" Flatscreen w/DVD Player

Forward Head - Port:

Door, Privacy - Access from Forward

Stateroom & Salon

Handrails, Stainless Steel

Head, (VacuFlush®)

Power Vent, 12V

Storage, Medicine Cabinet - Mirrored

Vanity w/Solid Surface Countertop,

Sink, Grohe® Faucet & Storage Below

Forward Shower - Starboard:

Clothes Hook

Curtain, Shower

Door, Privacy - Access from Forward

Stateroom

Handrails, Stainless Steel

Shower w/Seat & Adjustable Grohe

Shower Wand

Mid-Stateroom:

Curtain, Privacy w/Dedicated Storage

Portlight, Stainless Steel (Fixed)

Seating, Conversation Pit – Converts to Double Berth w/Slide-Out Base

Storage, Cabinet – Starboard

Technical Features

Control Station:

Alarms, High-Water - Bilge & Cabin

Compass

Dash, Gel-Coated - Nickel

Emergency Start System - Engines

Horns, Electric (Concealed), Dual

Trumpet

Instrumentation Panel

Shift & Throttle Controls w/Gold Knobs

SmartCraft™ Diagnostics: - Instrumentation, Custom Sea Ray® SmartCraft w/Low-

Glare Blue Night Lighting & Chrome Bezels- 4 in 1 Multigauges (2) (Includes: Fuel Level, Oil Pressure, Voltmeter & Water Temperature) - Tachometers (2)

Smart Craft System View (Includes: Air and Water Temperature, Combined Fuel Flow/Range, Depth, Engine Alarms/Hourmeters, Engine Synchronizer, GPS Interface,

Steering, Hydraulic

Steering, Tilt Wheel

Steering Wheel, Wood-Accent

Switch Panel (Backlit)

Switches, Illuminated Weatherproof

Rockers & Dimmer Control

Systems Monitor, Digital LCD – for Bilge Pump Monitoring

Electronics:

Electronic Circuit, 50 Amp/12V

VHF Radio w/Remote Speaker & 8' Fiberglass Antenna

Electrical Systems:

Batteries, (4) w/Trays

Battery Charger/Converter, 120V/40 AMP/12V

Battery Solenoid Main Switches -12V (2)

Isolators, Galvanic (2) Panel, DC Circuit Breaker -Located at Helm

Panel, DC Main Breaker -Located in Bilge

Panel, Main Distribution - DC -Located in Cabin

Panel, Main Distribution - AC -Housed in Aluminum Enclosure -Located in Cabin

Shore Power, Dual 30 Amp/120V/60 Cycle, 50' Cords & Adapters TV/Phone Inlet w/TV Antenna, TV

Shore Cord & Phone Shore Cord

Wiring, Color-Coded w/Chafe Protection

Generator:

Remote Start, Muffler, Freshwater

Cooling, Fuel Filter, Seacock & Seawater Strainer, 120V/60 Cycle

Air Conditioning/Heating:

Zone-Controlled Reverse-Cycle System (18,000 BTU)

Custom Integral Vent System

Engine Room:

Bilge Pump, 12V Automatic (2)

Bilge Pumps, 12V Automatic High

Water (1-Bilge, 1 Cabin)

Blowers, 12V Bilge (2)

Engine, Freshwater Cooling (Gas)

Exhaust, Underwater - Patented

Fire Suppression System - Automatic w/Manual Pull

Gel-Coated Engine Room, Oyster

Insulation, Engine Room - 2" w/Vinyl Barrier

Lighting, 12V

Steps, Engine Room Access

Fuel System:

Fuel Filters, Remote - (Racor® Filters Diesel Engines)

Fuel Lines, USCG – Type A-1

Fuel Tanks, Aluminum w/ Electric Shutoff Valves & Electric Sending

Units (2)

Water System:

Freshwater Washdown Spigot - Transom

Manifold System w/Shutoff Valves

Pressure Water System w/12V Pump

Shower, Cockpit - Hot & Cold

Water Heater, 120V (6-Gallon)

Water Inlet, Dockside

Water Tank (55 Gallons)

Waste System:

Head System (VacuFlush®)

Holding Tank Level Indicators – MDP & Head

Holding Tank w/ Dockside Pump-Out (35 Gallons)

Sump Box w/Pump, Automatic

Underwater Gear:

Bonding System w/ Zinc Hull Plate

Propeller Shafts, 1 1/2" Stainless

Steel (2) - Aquamet 19 (Gas)

Propellers - Nibral 4-Blade Cup

Rudders - Manganese-Bronze w/Stainless Steel Posts

Seacocks on all Underwater Fittings

Seawater Strainers – Engines Shaft Logs, Dripless w/Extra Seal Carrier Kit

Struts, Manganese - Bronze

Trim Tabs, Hydraulic

Electronics Options

Raymarine® Individual

Options:

Raymarine E120 Networked

GPS/Chartplotter/Radar w/Integrated 4kW Open Array

(12.1" Color LCD)

Raymarine E120, Auxilliary

GPS/Chartplotter

Raymarine Autopilot -

Raypilot ST-7001 +

Raymarine Depth Display ST-60

Raymarine Fishfinder, DSM 300

(Only Available w/E120 Radar/Chartplotter)

Contact Information

Galati Yacht Sales has been committed to exceeding the expectations of its customers for more than 42 years, and we understand that purchasing a boat is a big decision. Our professional staff is here to assist you in every way – before, during and after the sale. Please feel free to contact us with any questions that you may have.

Individual Options

Bow Thruster

Macerator w/ Seacock Interlock System

Refrigerator, 120V/60 Cycle - Cockpit

(In Lieu of Standard Icemaker)

Spotlight w/ Dual Halogen Bulbs -

Remote Controlled

Stereo, Cockpit & Cabin

Sound System

TV, 17" Flatscreen w/DVD - Cockpit

TV, 14" Flatscreen w/DVD - Mid

Stateroom

Vacuum System, Central, 120V/60 Cycle (Beam®)

Disclaimer

The Company offers the details of this vessel in good faith but cannot guarantee or warrant the accuracy of this information nor warrant the condition of the vessel. A buyer should instruct his agents, or his surveyors, to investigate such details as the buyer desires validated. This vessel is offered subject to prior sale, price change, or withdrawal without notice.

Exclusions

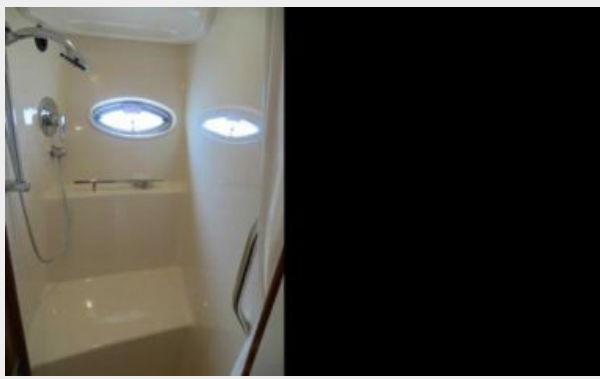
Owner's personal belongings.

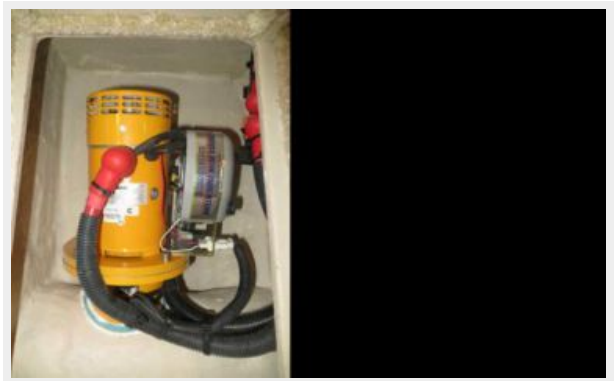
Disclaimer

The Company offers the details of this vessel or yacht in good faith but cannot guarantee or warrant the accuracy of this information nor warrant the condition of the vessel. A buyer should instruct his representatives, agents, or his surveyors, to investigate such details as the buyer desires validated. This vessel or yacht is offered subject to prior sale, price change, or withdrawal without notice.

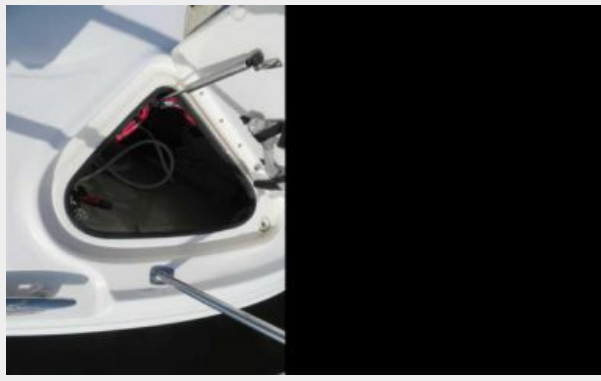
PHOTOS













CONTACTS

Andrey Shestakov, leading yacht broker of the sales department of Shestakov Yacht Sales Inc. Shestakov Yacht Sales Inc., the official representative of the Miami/Fort Lauderdale FL headquarters.

Contact details

Email: andrey@shestakovyachtsales.com

Web: shestakovyachtsales.com/en/

Telephones

USA: +1(954)274-4435

Office hours

Monday – Saturday: **9:00 - 21:00** EDT

Sunday: **closed**

Address



Harbour Towne Marina, 850 NE 3rd St,
STE 213, Dania, FL 33004