

NO NAME — SEA RAY



Судостроитель: SEA RAY

Год постройки: 2006

Модель: Крейсер

Цена: ЦЕНА ЯХТЫ ПО ЗАПРОСУ

Местонахождение: United States

Длина общая: 38' 0" (11.58m)

Ширина: 12' 6" (3.81m)

Макс. осадка: 3' 1" (0.94m)

Купить No Name — SEA RAY а также выбрать подходящую вам яхту из нашего каталога яхт вам поможет опытный яхтенный брокер Андрей Шестаков. На сегодняшний день компания Shestakov Yacht Sales Inc. имеет большое количество яхт в собственном списке продаж, а также тесно сотрудничает со всеми крупными яхтенными производителями по всему миру.

Для того чтобы купить яхту No Name — SEA RAY а также проконсультироваться по любому вопросу связанному с покупкой, продажей, чартером яхт позвоните по телефону **+7(918)465-66-44**.

ОГЛАВЛЕНИЕ

ОГЛАВЛЕНИЕ	2
ХАРАКТЕРИСТИКИ	4
Обзор	4
Основная информация	4
Размеры	4
Скорость, вместимость и масса	4
Размещение	4
Корпус и палуба	5
Информация о двигателе	5
ПОДРОБНОЕ ОПИСАНИЕ	6
Highlights	6
Recent Upgrades/Service	7
Features and Standard Equipment	7
Cockpit Features	9
Cabin Features	10
Technical Features	13
Electronics Options	17
Contact Information	17
Individual Options	18
Disclaimer	18
Исключения	18
Отказ от ответственности	18
ФОТОГРАФИИ	19
КОНТАКТЫ	25
Контактная информация	25
Телефоны	25
Время работы	25
Адрес	25

ХАРАКТЕРИСТИКИ

Обзор

METICULOUSLY CARED FOR

BOW THRUSTER

TURN KEY!

This 2006 Sea Ray 380 Sundancer is in great shape. The owner is fastidious about the care of the vessel. Everything has to be clean, tidy, and ready to go boating at all times. Everything about this boat is extremely nice. The engine room, bottom, and exterior are maintained every month. No excuses here, just a remarkable vessel!

Основная информация

Тип судна: Крейсер

Модельный год: 2006

Год постройки: 2006

Страна: United States

Размеры

Длина общая: 38' 0" (11.58m)

Ширина: 12' 6" (3.81m)

Макс. осадка: 3' 1" (0.94m)

Скорость, вместимость и масса

Водоизмещение: 18500 Pounds

Вместимость воды: 55 Gallons

Вместимость сточного бака: 35 Gallons

Объем топливного бака: 250 Gallons

Размещение

Всего кают: 2

Всего коек: 2

Всего ком. состава: 1

Корпус и палуба

Материал корпуса: Fiberglass

Информация о двигателе

Двигатели: 2

Производитель: Mercruiser

Модель: 8.1

Тип двигателя: Inboard

Тип топлива: Gas

ПОДРОБНОЕ ОПИСАНИЕ

Highlights

- Standard SmartCraft™ Instrumentation and System View
- Fiberglass hard top with aft sunshade, overhead lighting and stainless steel grab rails
- Swivel bucket helm seat with flip-up thigh-rise bolster, armrests, and heavy-duty pedestal with slide, swivel and pneumatic vertical adjustment
- Companion bench with molded fiberglass storage
- Electrically actuated engine compartment hatch
- Standard generator with sound shield
- Standard LCD drop-down flatscreen TV with remote DVD in salon
- 12V AM/FM single CD with six-disc CD changer, eight (8) speakers and digital cockpit remote control
- Innerspring mattress is standard in forward stateroom
- Cockpit wet bar with sink and faucet, Corian® countertop, stainless steel handrail, trash receptacle, and cooler with dedicated storage
- Large integral/extended swim platform with heavy-duty stainless steel swim ladder
- Separate shower and dual-entry head
- Water manifold system with shut-off valve
- Underwater exhaust
- Ultraleather HP™ standard on all interior seating
- Sirius® satellite receiver with antenna
- Standard anchor washdown

Windlass, Rope/Chain w/Foot

Switches (Lofrans®, Project 1,000

Low Profile)

Certifications:

Meets Applicable USCG & ABYC

Standards

NMMA Certification

Mercury Installation Quality Certification

Recent Upgrades/Service

- Generator Service 10/15
- Engine Service 10/15
- Canvas and Eisenglass 10/15
- New Manifolds 10/15
- Thruster 9/14
- Bottom Paint 9/14
- New Transmission Coolers 9/14
- Raw Water Pump Rebuild 9/14
- New Batteries 3/14
- Props Balanced 1/14
- New Platinum Navionics chard card 1/14
- New Anchor Rode and Chain 1/14

Features and Standard Equipment

HULL & DECK FEATURES

Bottom Paint

Bow Rail, Stainless Steel w/ Welded

Stanchions, Intermediate Rails &

Life Lines

Cleats, Custom Sea Ray® Thru-Bolted-Stainless Steel (6)

Deck Fill Plates, Stainless Steel

Deck Rails, 316 Stainless Steel

Drain Plug, Brass-Threaded -Garboard

Gel Coat, Arctic White

Graphics, Striping

Handrails, 316 Stainless Steel

Hatch, Deck Vent – Translucent w/Locks & Sky Screen Cover (Trapezoid)

Hull Windows Stainless Steel (6 Fixed)

Lights, Navigation

Portlights, Stainless Steel (2 Fixed, 2 Opening)

Resin, High-Performance Vinylester

Rub Rail, PVC w/Stainless Steel Insert

Storage Transom Wall (For Fenders & Gear)

Stringer System - Fiberglass

Swim Platform, Integral w/Concealed

Stainless Steel Three-Step Swim

Ladder w/Integral Grab Handle

Thru-Hull Fittings, Stainless Steel

Toe Rail, Molded Fiberglass - Deck

Vent System, Engine Room - Integral

Windshield, Tempered/Tinted-Curved

Glass w/Stainless Steel Frame,

Electric Front Vent & Stainless

Steel Supports

Windshield Washer System

Windshield Wipers w/Delay & Speed Control

Canvas (Sunbrella®):

Aft Curtain

Front Curtains

Side Curtains

Windlass System:

Anchor, Galvanized

Anchor Chute, Stainless Steel

Anchor Rope/Chain Storage w/Hatch

Anchor Washdown Spigot

Cockpit Features

Beverage Holders (8)

Carpet Liner, Snap-In

Door, Cabin Entry - Acrylic

Door, Transom Center Entry - Acrylic

Floor Liner, Fiberglass - Self-Bailing

Handrails, 316 Stainless Steel

Hard Top, Molded Fiberglass

(Seamless) 20" x 20" Hatch w/Aft

Sunshade & Lighting

Hatch, Engine Room - Electrically

Actuated

Lighting, Indirect

Outlet, 12V Accessory

Outlet, 120V GFI Protected

Seating, Companion Benchw/Molded Fiberglass Storage Base & Euro-Style Backrest

Seating, Helm, Euro-Style w/Flip-Up Thigh-Rise Bolster, Armrests,

Fiberglass Shell w/Slide, Swivel & Pneumatic Vertical Adjustment

Seating, U-Shaped Aft w/Storage Below - Starboard

Seating, L-Shaped Aft - Port

Steps, Boarding

Storage, Side Panel

Table, Corian® Cockpit w/Dedicated Storage

Wet Bar w/Sink, Faucet, Corian® Countertop, Stainless Steel

Handrail, Trash Receptacle & Cooler Storage – Port

Cabin Features

Carbon Monoxide Monitors

Carpet, Deep-Pile BCF - 44-ounce

Curtains & Drape Trim

Handrails, Stainless Steel

Interior Finish - Light Cherry & Dark

Cherry

Lighting, 12V Xenon

Outlet, Phone

Outlets, 120V GFI Protected

Outlet & Switch Plates - Satin Nickel

Finish

Pillows, Accent

Stereo, Clarion® 12V AM/FM Single

CD, Sirius® Satellite Receiver

w/Antenna, 6 Disc CD Changer,

Amplifier, Subwoofer, Speakers

(8), Digital Cockpit Remote Control

& Speaker Selector Switches

Steps, Entryway - Wood

w/Aluminum Pedestal

Storage, In-Floor

Wood Trim, Handcrafted

Salon:

Blinds, Wood

Lighting, 12V Indirect

Seating, Sofa w/Storage Below -

Converts to Bed w/Filler Cushions

Storage, Gunwale Cabinets

Table, Dinette w/High Gloss Wood

Surface and Designated Storage

TV, 20" Flatscreen LCD Drop Down

(120V) w/Remote DVD Player,

Coax Outlet, Gain Control Panel &

Omni Directional Antenna

Galley:

Blinds, Wood

Coffeemaker, 120V

Countertop, Solid Surface w/Sink,

Single Lever Grohe® Faucet &

Sink Cover

Freezer - Dual Voltage 120V/12V

(Waeco®)

Handrail, Stainless Steel

Microwave, 120V

Outlet, 12V Accessory

Power Vent, 12V, Stainless Grill

Refrigerator - Under Counter Dual

Voltage - 120V/12V (Waeco)

Storage, Drawers w/Cutlery Insert

Storage, Upper & Lower w/Designated

Plate & Glass Storage

Stove, 120V Surface-Mounted, Two-

Burner w/Touch Pad

Trash Receptacle w/Chute & Solid

Surface Cover

Forward Stateroom:

Bed, Full-Size w/Innerspring

Mattress, Pillows, Sheets &

Coordinated Spread

Door, Privacy Sliding Pocket

Hanging Locker w/Light & Shelves -

Starboard

Hanging Locker, Mirrored w/Light - Port

Mirrored Rope Locker Bulkhead

Storage, Side Shelves

TV 17" Flatscreen w/DVD Player

Forward Head - Port:

Door, Privacy - Access from Forward

Stateroom & Salon

Handrails, Stainless Steel

Head, (VacuFlush®)

Power Vent, 12V

Storage, Medicine Cabinet - Mirrored

Vanity w/Solid Surface Countertop,

Sink, Grohe® Faucet & Storage Below

Forward Shower - Starboard:

Clothes Hook

Curtain, Shower

Door, Privacy - Access from Forward

Stateroom

Handrails, Stainless Steel

Shower w/Seat & Adjustable Grohe

Shower Wand

Mid-Stateroom:

Curtain, Privacy w/Dedicated Storage

Portlight, Stainless Steel (Fixed)

Seating, Conversation Pit – Converts to Double Berth w/Slide-Out Base

Storage, Cabinet – Starboard

Technical Features

Control Station:

Alarms, High-Water - Bilge & Cabin

Compass

Dash, Gel-Coated - Nickel

Emergency Start System - Engines

Horns, Electric (Concealed), Dual

Trumpet

Instrumentation Panel

Shift & Throttle Controls w/Gold Knobs

SmartCraft™ Diagnostics: - Instrumentation, Custom Sea Ray® SmartCraft w/Low-

Glare Blue Night Lighting & Chrome Bezels- 4 in 1 Multigauges (2) (Includes: Fuel Level, Oil Pressure, Voltmeter & Water Temperature) - Tachometers (2)

Smart Craft System View (Includes: Air and Water Temperature, Combined Fuel Flow/Range, Depth, Engine Alarms/Hourmeters, Engine Synchronizer, GPS Interface,

Steering, Hydraulic

Steering, Tilt Wheel

Steering Wheel, Wood-Accent

Switch Panel (Backlit)

Switches, Illuminated Weatherproof

Rockers & Dimmer Control

Systems Monitor, Digital LCD – for Bilge Pump Monitoring

Electronics:

Electronic Circuit, 50 Amp/12V

VHF Radio w/Remote Speaker & 8' Fiberglass Antenna

Electrical Systems:

Batteries, (4) w/Trays

Battery Charger/Converter, 120V/40 AMP/12V

Battery Solenoid Main Switches -12V (2)

Isolators, Galvanic (2) Panel, DC Circuit Breaker -Located at Helm

Panel, DC Main Breaker -Located in Bilge

Panel, Main Distribution - DC -Located in Cabin

Panel, Main Distribution - AC -Housed in Aluminum Enclosure -Located in Cabin

Shore Power, Dual 30 Amp/120V/60 Cycle, 50' Cords & Adapters TV/Phone Inlet w/TV Antenna, TV

Shore Cord & Phone Shore Cord

Wiring, Color-Coded w/Chafe Protection

Generator:

Remote Start, Muffler, Freshwater

Cooling, Fuel Filter, Seacock & Seawater Strainer, 120V/60 Cycle

Air Conditioning/Heating:

Zone-Controlled Reverse-Cycle System (18,000 BTU)

Custom Integral Vent System

Engine Room:

Bilge Pump, 12V Automatic (2)

Bilge Pumps, 12V Automatic High

Water (1-Bilge, 1 Cabin)

Blowers, 12V Bilge (2)

Engine, Freshwater Cooling (Gas)

Exhaust, Underwater - Patented

Fire Suppression System - Automatic w/Manual Pull

Gel-Coated Engine Room, Oyster

Insulation, Engine Room - 2" w/Vinyl Barrier

Lighting, 12V

Steps, Engine Room Access

Fuel System:

Fuel Filters, Remote - (Racor® Filters Diesel Engines)

Fuel Lines, USCG – Type A-1

Fuel Tanks, Aluminum w/ Electric Shutoff Valves & Electric Sending

Units (2)

Water System:

Freshwater Washdown Spigot - Transom

Manifold System w/Shutoff Valves

Pressure Water System w/12V Pump

Shower, Cockpit - Hot & Cold

Water Heater, 120V (6-Gallon)

Water Inlet, Dockside

Water Tank (55 Gallons)

Waste System:

Head System (VacuFlush®)

Holding Tank Level Indicators – MDP & Head

Holding Tank w/ Dockside Pump-Out (35 Gallons)

Sump Box w/Pump, Automatic

Underwater Gear:

Bonding System w/ Zinc Hull Plate

Propeller Shafts, 1 1/2” Stainless

Steel (2) - Aquamet 19 (Gas)

Propellers - Nibral 4-Blade Cup

Rudders - Manganese-Bronze w/Stainless Steel Posts

Seacocks on all Underwater Fittings

Seawater Strainers – Engines Shaft Logs, Dripless w/Extra Seal Carrier Kit

Struts, Manganese - Bronze

Trim Tabs, Hydraulic

Electronics Options

Raymarine® Individual

Options:

Raymarine E120 Networked

GPS/Chartplotter/Radar w/Integrated 4kW Open Array

(12.1” Color LCD)

Raymarine E120, Auxilliary

GPS/Chartplotter

Raymarine Autopilot -

Raypilot ST-7001 +

Raymarine Depth Display ST-60

Raymarine Fishfinder, DSM 300

(Only Available w/E120 Radar/Chartplotter)

Contact Information

Galati Yacht Sales has been committed to exceeding the expectations of its customers for more than 42 years, and we understand that purchasing a boat is a big decision. Our professional staff is here to assist you in every way – before, during and after the sale. Please feel free to contact us with any questions that you may have.

Individual Options

Bow Thruster

Macerator w/ Seacock Interlock System

Refrigerator, 120V/60 Cycle - Cockpit

(In Lieu of Standard Ice maker)

Spotlight w/ Dual Halogen Bulbs -

Remote Controlled

Stereo, Cockpit & Cabin

Sound System

TV, 17" Flatscreen w/DVD - Cockpit

TV, 14" Flatscreen w/DVD - Mid

Stateroom

Vacuum System, Central, 120V/60 Cycle (Beam®)

Disclaimer

The Company offers the details of this vessel in good faith but cannot guarantee or warrant the accuracy of this information nor warrant the condition of the vessel. A buyer should instruct his agents, or his surveyors, to investigate such details as the buyer desires validated. This vessel is offered subject to prior sale, price change, or withdrawal without notice.

Исключения

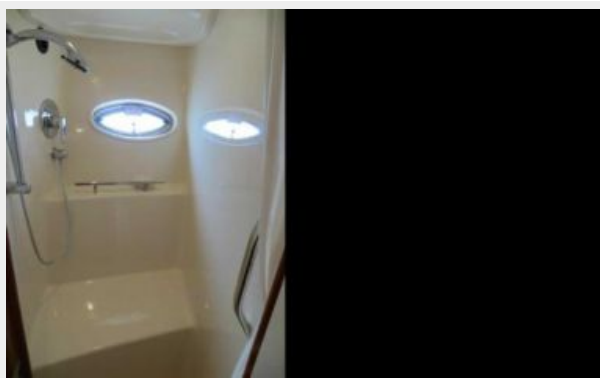
При продаже яхты исключаются личные вещи владельца.

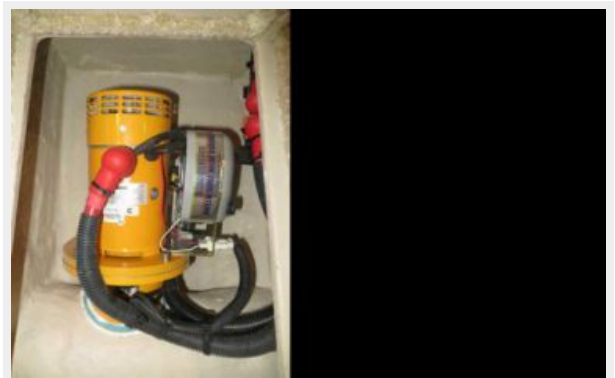
Отказ от ответственности

Компания предоставляет описание судна или яхты добросовестно, но не может гарантировать точность этой информации, а также не ручается за техническое состояние. Покупатель должен проинструктировать своих агентов или оценщиков исследовать представленную информацию более подробно, по собственному желанию. Продажа судна или яхты, изменение цены или снятие с продажи будет происходить без предварительного уведомления.

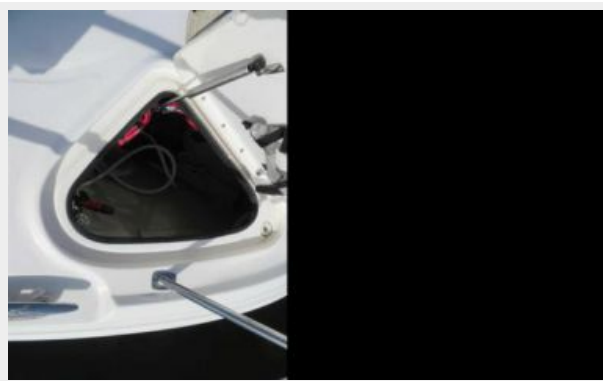
ФОТОГРАФИИ













КОНТАКТЫ

Андрей Шестаков (Andrey Shestakov) – ведущий яхтенный брокер отдела продаж яхт и судов компании Shestakov Yacht Sales Inc. Официальный представитель Shestakov Yacht Sales Inc. для русскоговорящих клиентов в центральном офисе компании в Майами/Форт Лодердейл/Флорида/США.

Контактная информация

Email: **andrey@shestakovyachtsales.com**

Web: shestakovyachtsales.com

Телефоны

Краснодарский край: **+7(918)465-66-44**

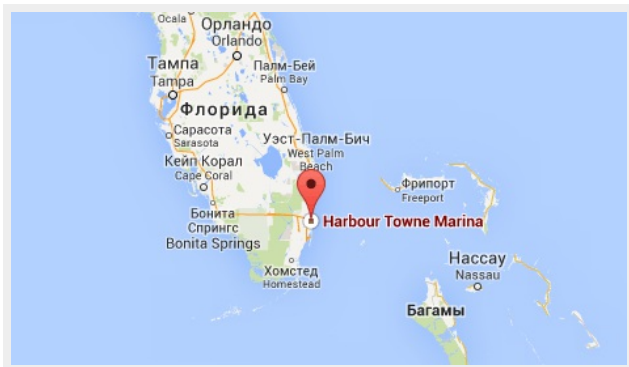
США, Майами, Флорида: **+1(954)274-4435**

Время работы

Понедельник – Суббота: **9:00 - 21:00**
EDT

Воскресенье: **Закрето**

Адрес



Harbour Towne Marina, 850 NE 3rd St,
STE 213, Dania, FL 33004