

ANNABEL II — HORIZON



Builder: HORIZON

Year Built: 2009

Model: Motor Yacht

Price: PRICE ON APPLICATION

Location: Montenegro

LOA: 97' (29.57mm)

Beam: 21.5

Min Draft: 6' 5" (1.96mm)

Max Draft: 6' 5" (1.96mm)

Cruise Speed: 14 Knots Kts. (16 MPH)

Max Speed: 22 Knots Kts. (25 MPH)

Our experienced yacht broker, Andrey Shestakov, will help you choose and buy a yacht that best suits your needs **ANNABEL II — HORIZON** from our catalogue. Presently, at Shestakov Yacht Sales Inc., we have a wide variety of yachts available on our sale's list. We also work in close contact with all the big yacht manufacturers from all over the world.

If you would like to buy a yacht **ANNABEL II — HORIZON** or would like help answering any questions concerning purchasing, selling or chartering a yacht, please call **+1(954)274-4435**

TABLE OF CONTENTS

TABLE OF CONTENTS	2
SPECIFICATIONS	3
Overview	3
Basic Information	3
Dimensions	4
Speed, Capacities and Weight	4
Accommodations	4
Hull and Deck Information	4
Engine Information	4
PHOTOS	5
Horizon Elegance 97 Raised Pilot House - WIDE BODY	7
Horizon Elegance 97 Raised Pilot House - WIDE BODY	7
Horizon Elegance 97 Raised Pilot House - WIDE BODY	7
Horizon Elegance 97 Raised Pilot House - WIDE BODY	7
CONTACTS	8
Contact details	8
Telephones	8
Office hours	8
Address	8

SPECIFICATIONS

Overview

ANNABEL II was delivered in 2009, She was built as a "Wide Body" version of the Horizon Raised Pilot House RPH 97' series and has four large staterooms for up to 10 guests, all with ensuite facilities, plus a spacious open galley and formal dining area. She has been a popular charter yacht.

Fitted with CAT C-32 diesel engines offering economical cruising at 10-12 knots. Running up to a maximum speed in excess of 20 knots.

A full specification of systems including powerful hydraulic bow and stern thruster, 32 Kwa ONAN generators, High power Air conditioning system.

Stabilisers are fitted for under way comfort.

Third aft deck helm position for mooring.

The Flybridge sun deck hosts a secondary helm position with repeated Navigation screens and aids. Semi hard top cover, BBQ wet bar and Jacuzzi Spa bath make the fly bridge a private haven for relaxation and entertainment.

The aft bathing platform is deep and secure for tender landings and water sports access to the sea. Also well designed is the crew aft transom door access separating crew circulation from guests, receiving deliveries for provisioning and engine room access in a common area. Two twin crew cabins are fitted out to a similar standard to the guest areas, with a large ensuite shower / heads and mini galley. A very comfortable crew area for this length yacht. Max 4 crew.

The yacht has received a comprehensive service history, and has a full ongoing preventative maintenance schedule for future reliability.

Basic Information

Category: Motor Yacht

Sub Category: Raised Pilothouse

Model Year: 2009

Year Built: 2009

Country: Montenegro

Dimensions

LOA: 97' (29.57mm)	Beam: 21.5
Min Draft: 6' 5" (1.96mm)	Max Draft: 6' 5" (1.96mm)

Speed, Capacities and Weight

Cruise Speed: 14 Knots Kts. (16 MPH)	Max Speed: 22 Knots Kts. (25 MPH)
Gross Tonnage: 217 Pounds	Water Capacity: 450 Gallons
Fuel Capacity: 4000 Gal Gallons	

Accommodations

Total Cabins: 4	Total Berths: 8
Sleeps: 8	Total Heads: 4
Crew Cabin: 4	Crew Berths: 4
Crew Heads: 1	

Hull and Deck Information

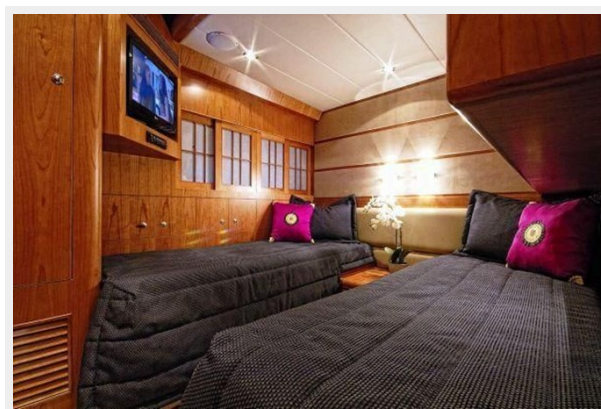
Hull Material: Fiberglass	Deck Material: Teak over Fiberglass
Hull Configuration: Planing	Hull Color: white

Engine Information

Engines: 2	Manufacturer: Caterpillar
Engine Type: Inboard	Fuel Type: Diesel

PHOTOS







**Horizon Elegance 97 Raised Pilot House -
WIDE BODY**



**Horizon Elegance 97 Raised Pilot House -
WIDE BODY**



**Horizon Elegance 97 Raised Pilot House -
WIDE BODY**



**Horizon Elegance 97 Raised Pilot House -
WIDE BODY**



CONTACTS

Andrey Shestakov, leading yacht broker of the sales department of Shestakov Yacht Sales Inc. Shestakov Yacht Sales Inc., the official representative of the Miami/Fort Lauderdale FL headquarters.

Contact details

Email: **andrey@shestakovyachtsales.com**

Web: shestakovyachtsales.com/en/

Telephones

USA: **+1(954)274-4435**

Office hours

Monday – Saturday: **9:00 - 21:00 EDT**

Sunday: **closed**

Address



Harbour Towne Marina, 850 NE 3rd St,
STE 213, Dania, FL 33004