

SEQUEL P — PROTEKSAN-TURQUOISE



Builder: Proteksan-Turquoise

Year Built: 2009

Model: Motor Yacht

Price: PRICE ON APPLICATION

Location: France

LOA: 179' 6" (54.71m)

Beam: 30' 5" (9.27m)

Min Draft: 10' 2" (3.10m)

Max Draft: 10' 8" (3.25m)

Cruise Speed: 14 Kts. (16 MPH)

Max Speed: 16 Kts. (18 MPH)

Our experienced yacht broker, Andrey Shestakov, will help you choose and buy a yacht that best suits your needs **SEQUEL P — Proteksan-Turquoise** from our catalogue. Presently, at **Shestakov Yacht Sales Inc.**, we have a wide variety of yachts available on our sale's list. We also work in close contact with all the big yacht manufacturers from all over the world.

If you would like to buy a yacht **SEQUEL P — Proteksan-Turquoise** or would like help answering any questions concerning purchasing, selling or chartering a yacht, please call **+1(954)274-4435**

TABLE OF CONTENTS

TABLE OF CONTENTS	2
SPECIFICATIONS	4
Basic Information	4
Dimensions	4
Speed, Capacities and Weight	4
Accommodations	4
Hull and Deck Information	5
Engine Information	5
DETAILED INFORMATION	6
Introduction	6
Exclusions	7
Disclaimer	7
PHOTOS	8
Main Salon	8
Main Salon	8
Main Salon	8
Main Salon	8
Dining Room	8
Main Salon	8
Master Stateroom	9
Master Stateroom	9
Master Stateroom Private Office	9
Master Bathroom	9
Master Bathroom	9
VIP Stateroom	9
VIP Bathroom	10
VIP Converted Massage Room	10
Twin Guest Stateroom	10

Wheelhouse	10
Wheelhouse	10
Sky Lounge	10
Sky Lounge	11
Sky Lounge	11
Sun Deck	11
Jacuzzi	11
Jacuzzi	11
Sun Deck	11
Sun Deck	12
Stern	12
Profile	12
CONTACTS	13
Contact details	13
Telephones	13
Office hours	13
Address	13

SPECIFICATIONS

Basic Information

Category: Motor Yacht	Sub Category: Tri-Deck
Model Year: 2009	Year Built: 2009
Refit Year: 2015	Country: France

Dimensions

LOA: 179' 6" (54.71m)	Beam: 30' 5" (9.27m)
Min Draft: 10' 2" (3.10m)	Max Draft: 10' 8" (3.25m)

Speed, Capacities and Weight

Cruise Speed: 14 Kts. (16 MPH)	Cruise Speed Range: 3500
Max Speed: 16 Kts. (18 MPH)	Displacement: 1433004.703 Pounds
Gross Tonnage: 710 Pounds	Water Capacity: 5777 Gallons
Holding Tank: 6166 Gallons	Fuel Capacity: 22297 Gallons

Accommodations

Total Cabins: 6	Sleeps: 12
Captain Cabin: True	Crew Sleeps: 13

Hull and Deck Information

Hull Material: Steel	Deck Material: Teak
Hull Configuration: Full Displacement	Hull Color: Blue
Hull Finish: Stainless Steel	Hull Designer: Dubois Naval Architects
Exterior Designer: Dubois Naval Architects	Interior Designer: H2 Design

Engine Information

Engines: 2	Manufacturer: Caterpillar
Model: 3512B	Engine Type: Inboard
Fuel Type: Diesel	

DETAILED INFORMATION

Introduction

Built in 2009, SEQUEL P has a wonderful contemporary feel. Timeless styling and beautiful furnishings featured throughout her living areas create an elegant yet comfortable atmosphere. SEQUEL P boasts a stunning sundeck that spans almost half the length of the yacht offering exceptional outdoor living.

HIGHLIGHTS

- Stylish Main Salon with Custom Bar
- 6 Guest Staterooms
- On deck, full beam Master Suite with private office, his/her ensuite bathrooms separated by a common steam shower, and massive walk-in closets
- VIP Stateroom offers flexible use for an office or Massage Therapy Room
- 4 Additional Guest Staterooms with ensuite, 2 Double Staterooms and 2 Twin staterooms with an additional Pullman in each
- Fully Equipped Gym
- RYA Accredited Water Sports Training Centre
- Jacuzzi and Dayhead on Sun Deck
- Zero Speed Stabilizers

SEQUEL P is the perfect combination of luxury and performance. SEQUEL P was designed by London based H2 designers and built by Proteksan Turquoise Yachts Inc. SEQUEL P was launched in Turkey in June 2009. Her proven hull provides uncompromising stability and seaworthiness and she achieves more than her promised max speed of 16 knots with 2xCAT 3512B diesel engines. SEQUEL P is simply "dazzling" with fascinating interior areas furnished with sycamore and macore woods which have been executed to the highest level with some unique features as well as generous exterior deck spaces. Twelve guests will enjoy the luxurious accommodation on board. A master suite on main deck features outstanding views through full height windows, vast walk-in wardrobes, his and hers ensuite bath/shower rooms and private office. A VIP cabin that can be converted to an additional office, provides flexible accommodation solutions for your charter party. There are four guest staterooms on lower deck all with ensuite bathrooms. There are 2 double staterooms and 2 twin staterooms with an additional pullman in each. The interior spaces are rewarded with a remarkable comfort level as an outcome of challenging work on sound and vibration insulation. The upper deck spaces incorporate an impressive sky lounge salon with a highly stylish bar, the gym equipped with full entertainment system - all with large windows providing an appealing view. The dining room is combined with the main salon and gives flow to service and a light space to enjoy. The exterior areas were custom designed for flexible arrangements for various occasions with removable tables and interchangeable table tops. While the main deck aft area is kept simple with two coffee tables and a built in seat; the upper deck aft area is equipped with a TV screen on a lift, ice maker, refrigerator and a large center seating group with two convertible tables, either can be used as a

large dining table or coffee tables. The sundeck features ample deck space, a large Jacuzzi and sun beds as well as a dayhead for guest convenience. Owner's exterior decks are totally clear of tenders and toys with the garage aft of engine room capable to store two 3-person jet skies and a tender up to 21', and a crew/rescue tender on the Portuguese deck. Together with an incredible upgraded audio-visual system, an abundance of watertoys and tenders and a remarkable art collection, this yacht provides a multitude of quiet or busy forms of relaxation.

Exclusions

Owner's personal belongings.

Disclaimer

The Company offers the details of this vessel or yacht in good faith but cannot guarantee or warrant the accuracy of this information nor warrant the condition of the vessel. A buyer should instruct his representatives, agents, or his surveyors, to investigate such details as the buyer desires validated. This vessel or yacht is offered subject to prior sale, price change, or withdrawal without notice.

PHOTOS

Main Salon



Main Salon



Main Salon



Main Salon



Main Salon



Dining Room



Master Stateroom



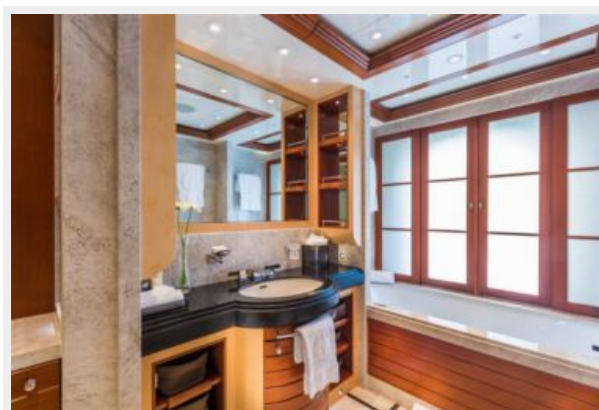
Master Stateroom



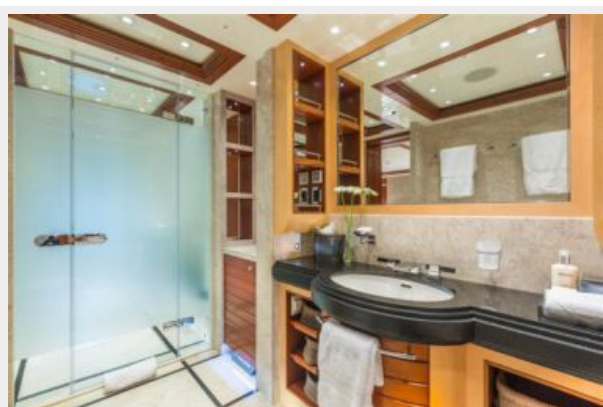
Master Stateroom Private Office



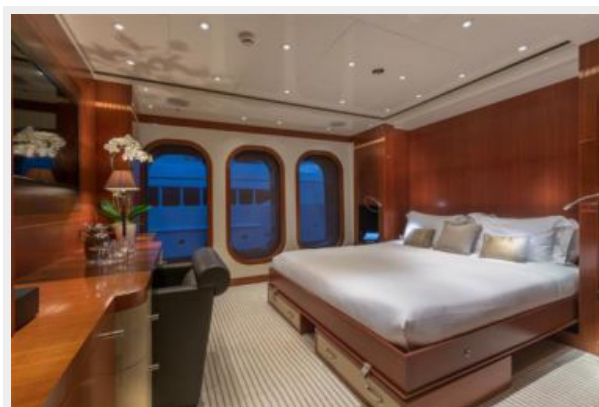
Master Bathroom



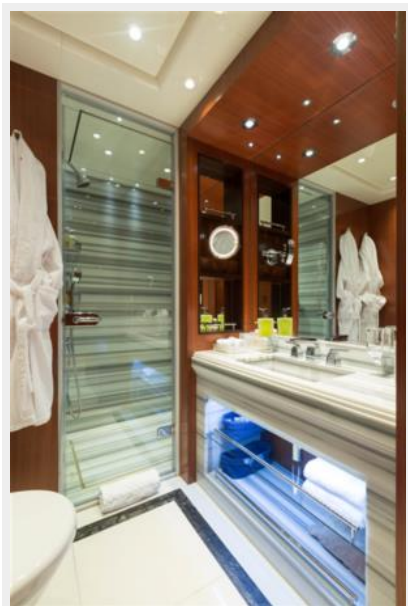
Master Bathroom



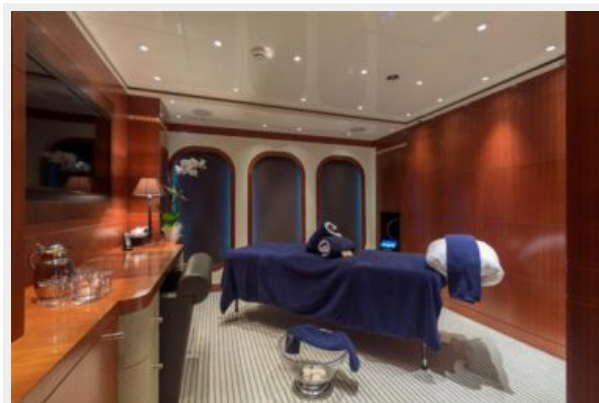
VIP Stateroom



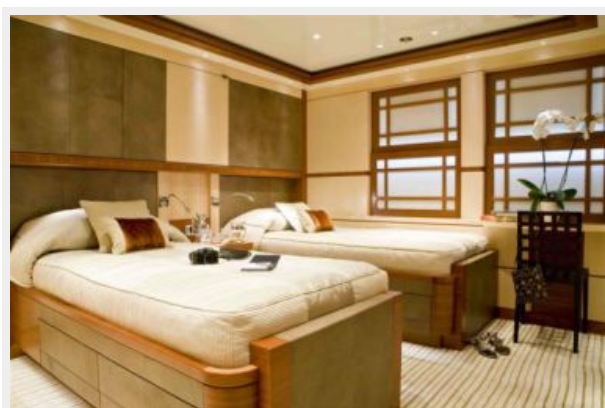
VIP Bathroom



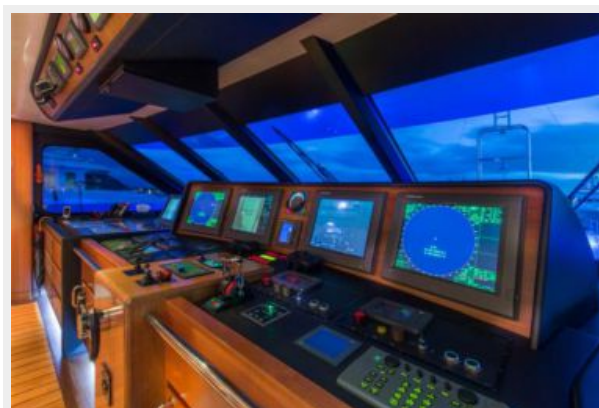
VIP Converted Massage Room



Twin Guest Stateroom



Wheelhouse



Wheelhouse



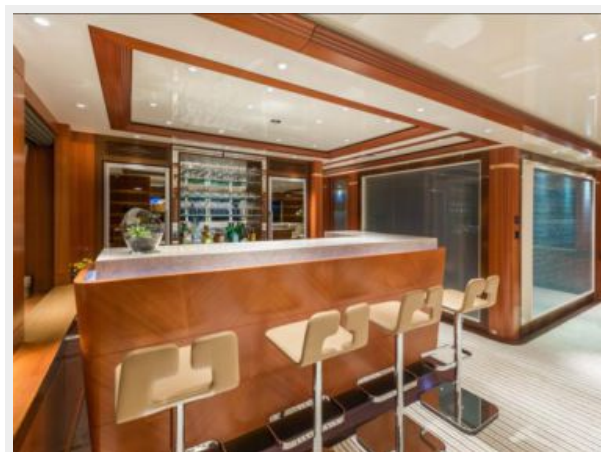
Sky Lounge



Sky Lounge



Sky Lounge



Sun Deck



Jacuzzi



Jacuzzi



Sun Deck



Sun Deck



Stern



Profile



CONTACTS

Andrey Shestakov, leading yacht broker of the sales department of Shestakov Yacht Sales Inc. Shestakov Yacht Sales Inc., the official representative of the Miami/Fort Lauderdale FL headquarters.

Contact details

Email: **andrey@shestakovyachtsales.com**

Web: shestakovyachtsales.com/en/

Telephones

USA: **+1(954)274-4435**

Office hours

Monday – Saturday: **9:00 - 21:00 EDT**

Sunday: **closed**

Address



Harbour Towne Marina, 850 NE 3rd St,
STE 213, Dania, FL 33004